

The Canadian Champion

Best Homes

MILTON, ONTARIO



\$749,000.

ROYAL LEPAGE

Campbellville Village Estates. This 3700 sq. ft. Georgian offers every imaginable feature. Two acre lot features entertainment centre, concrete pool, spa, tennis court and extensive decking.

ROYAL LEPAGE REAL ESTATE SERVICES LTD.
BARB LAFLECHE 878-8101

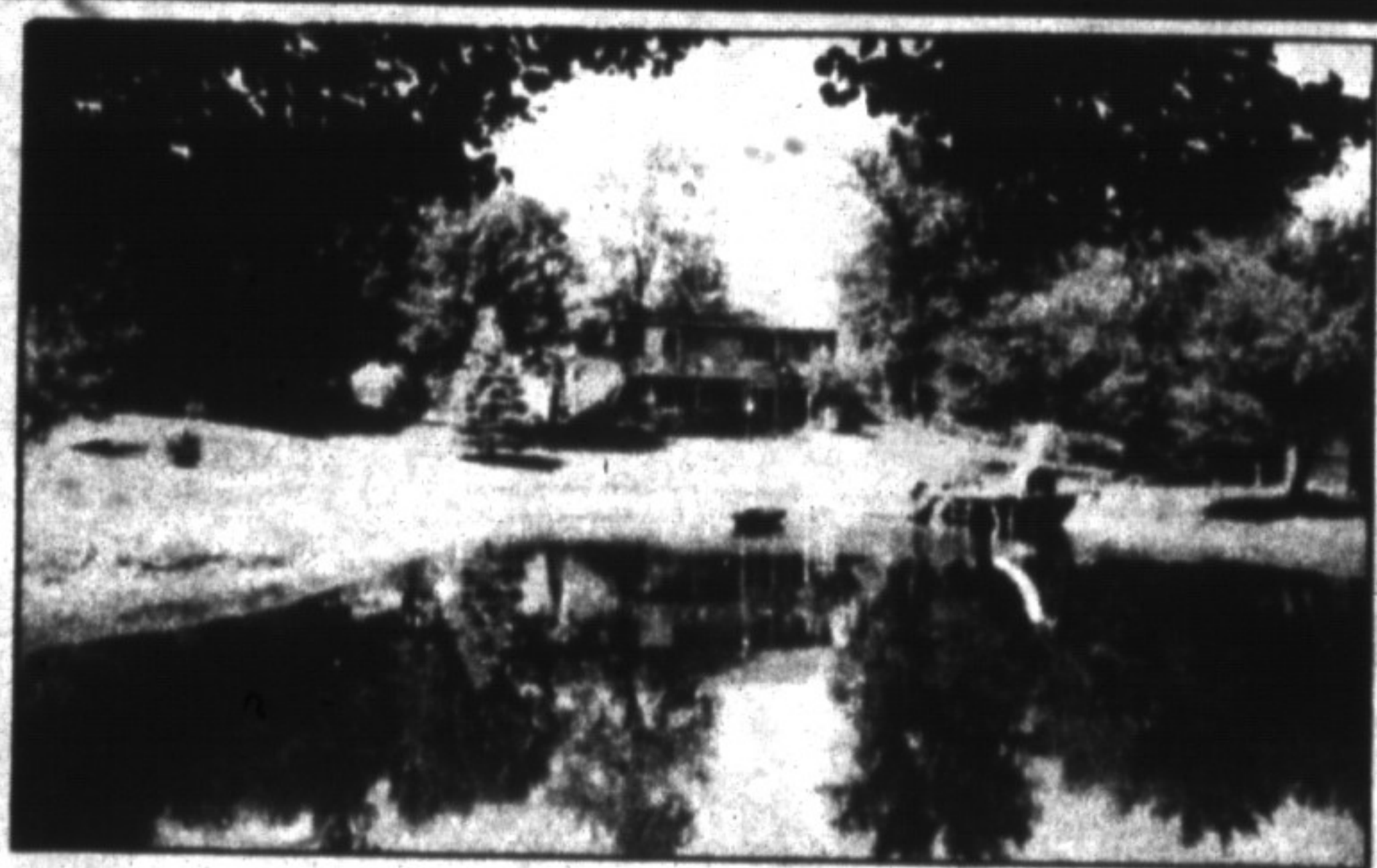


\$127,800.



Attractive design. Priced reduced for quick sale. Stop to look at this affordable 3 bedroom townhouse featuring country-style kitchen with ceramic floors & walk-out to patio. Upgraded carpet & freshly painted.

REALTY WORLD — W. J. McCrudden Real Estate
JO-ANNE VAN-SLINGERLAND 876-1133



\$595,000.

Horseman's Paradise, nestled beneath Rattlesnake Point on prestigious Walker's Line, this scenic 10 acres comes with a 3500 sq. ft. unique home which overlooks a large spring fed pond & tennis court, an 8 stall barn, 60 x 120' indoor arena, outdoor riding ring & two paddocks. All impeccably maintained. For viewing appoint call

COUNTRYWIDE CAMPBELLVILLE REALTY INC.
SYLVIA BURSEY 875-2294 854-2294



\$559,000.

Country Executive Home with 7% financing. Located on wooded estate lot in Halton Hills. 11 rooms, open concept, private yard with inground pool & gazebo. Pool & games rooms, family room, sauna & whirlpool room. This home is being sold under power of sale.

RE/MAX MILTOWNE REALTY CORP.
PAUL PAGE 878-2365



\$262,000

Randall Crescent. Executive 2-storey set on beautifully landscaped gardens offers many quality features and upgrades throughout. Contact Katrina to view this beautiful home.

RE/MAX MILTOWNE REALTY CORP.
KATRINA WALTON 878-2365



\$179,900

Backs onto the trees. Don't miss the great value that stands out in this package. This beautiful two-storey, 3 bedroom, 3 washroom home offers main floor family room with fireplace and double garage. Check out this superior location.

RE/MAX MILTOWNE REALTY CORP.
MIKE MORGAN 878-2365