

RE/MAX

Miltowne Realty Corp

Sold more homes since 1983
22 Ontario St. South 878-2365



ANNE TAYLOR

Associate Broker
Town & Country
854-9833
Tor.: 826-1030
Pager: 878-2365
RE/MAX Miltowne
Realty Corp.



MILTON HORSE FARM \$325,000

One of the best buys around. Large modern home on 15 acres with 6 stall barn, paddocks, pond, hayfield. Lovely rolling countryside ten minutes from Milton.



ATTENTION GARDENERS \$369,000

Large four bedroom home on delightful private ten acres yet close to 401 for easy commuting. Pond, lawns, fruit trees, mixed woods. room for barn and paddocks.



REDUCED. CAMPBELLVILLE \$279,900

Gleaming, bright Cape Cod, over 2,000 sq.ft., three-year-old home on two acres, close to town. Try to beat this price!



NEW LISTING

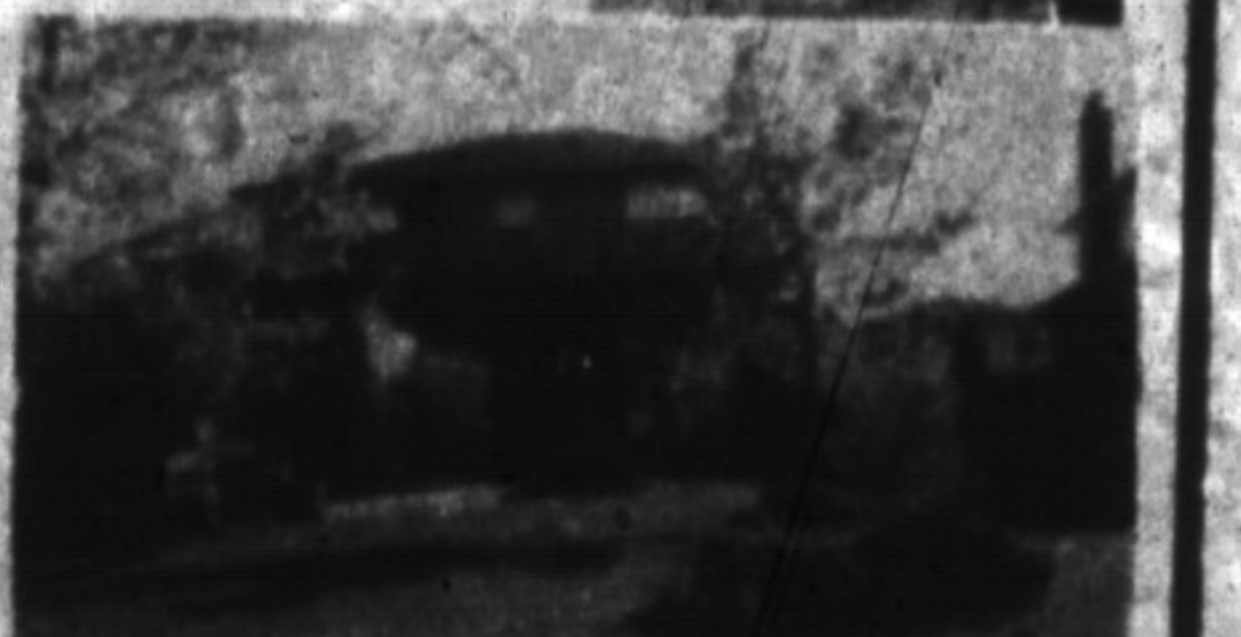
BROOKVILLE ESTATES \$399,900
Classic Williamsburg style, beautifully upgraded on private two-acre ravine lot. Many features including walkout lower level with rec. room, games' room. Extensive landscaping. A perfect entertainers' home.

ADDITIONAL SERVICE AVAILABLE

Fed up with dealing with tenants? Away for long periods of time? I am now offering a **PROPERTY MANAGEMENT SERVICE.**
Call for details.

KATRINA WALTON

Sales Representative
Office: 878-2365
Res: 878-1588
24 Hour Pager



RANDALL CRESCENT

Executive lifestyle awaits at this address. Superbly appointed with many quality features and upgrades, this home is completely finished from top to toe, inside and outside. Call Katrina for your appointment. \$262,000.

GARY THOMAS Broker/Owner

- Gail Pullen.....878-0110
- Freda Lawrence.....878-4860
- Maurice Miljour.....876-4577
- Audrey Newell.....878-5339
- Ron Furik.....878-3337
- Phil Prestidge.....878-6924
- Richard Hierman.....878-5806
- Carol M. Brooks.....875-0067
- Lindsay McLaren.....854-2451
- Katrina Walton.....878-1588
- Jean Snowden.....878-3155
- Mike Morgan.....878-8093
- Paul Page.....878-2995
- Anne Taylor.....854-9833
- Betty Ingle.....827-4286
- Ron MacNeil.....878-0198
- Clayton Hackenbrook.....875-0771
- Sharon Kerley.....854-0474
- John (J.P.) Pears.....878-6859
- Scott B. Prior.....878-2365
- Marilyn Andrews.....878-2365
- Sheryl Gray.....875-1121

Thinking of Campbellville?
Call

CAROL M. BROOKS Country Specialist

OFFICE: 878-2365
RES: 875-0067
TOR. LINE: 826-1030



PRICED TO SELL \$247,500 WONT LAST LONG

4 bdms., ensuite bath, family room, main floor laundry, upgraded kitchen - desirable location.



MAC ARTHUR DR. \$749,000

7 acres wooded seclusion, tudor, 3 bdrm., incredible kitchen, cherry wood throughout, lovely antique fireplace mantels, English country gardens.

BETTY INGLE

Sales Rep
878-2365
Res. 827-4286



BACKS ONTO PARKLAND

This home has 3 bedrooms, 3 bathrooms, eat-in kitchen with walkout. Main floor family room with fireplace, double garage and much much more. Priced to sell at \$188,500. Call Betty 878-2365 to view.

GET MOVING

Spring is here, take a minute to look at this immaculate townhouse, freshly painted, new broadloom trees off the patio, 4 bdms, eat-in kitchen, garage. A must to see with Betty 878-2365.



PHIL PRESTIDGE

878-2365
878-6924
Sales Rep.



SEMI SWEET

Popular 3 bdrm with large master bdrm, fireplace and private rear yard. GOOD PRICE!

INDUSTRIAL LAND FOR SALE

2.9 acres, outside storage, full services, 100% financing. 3.0 acres, corner lot, high profile location.

COMMERCIAL SPACE

Approx. 1600 sq. ft. in new building. Excellent shape, high profile location.

SUMMER ALL-STARS!

LEAGUE LEADER

Check out this property and I think you'll agree that it's an all-round leader...wonderful 25 acres, striking home, and great garage-workshop. Two year-round streams, heavily treed; escarpment setting...this is a winner! \$429,000.

OUTSTANDING OUTFIELD

This home's 3/4 acre lot gives it a great "outfield". And the four bedrooms, family and rec. rooms, sunroom and more, make it a fine home base in a country setting on the edge of urban Milton. \$259,900.

HOME RUN CHAMP

The purchasers of this upgraded older home on a big lot in old Milton will find themselves anxious to run home every day. \$185,900.

LEADING RELIEVER

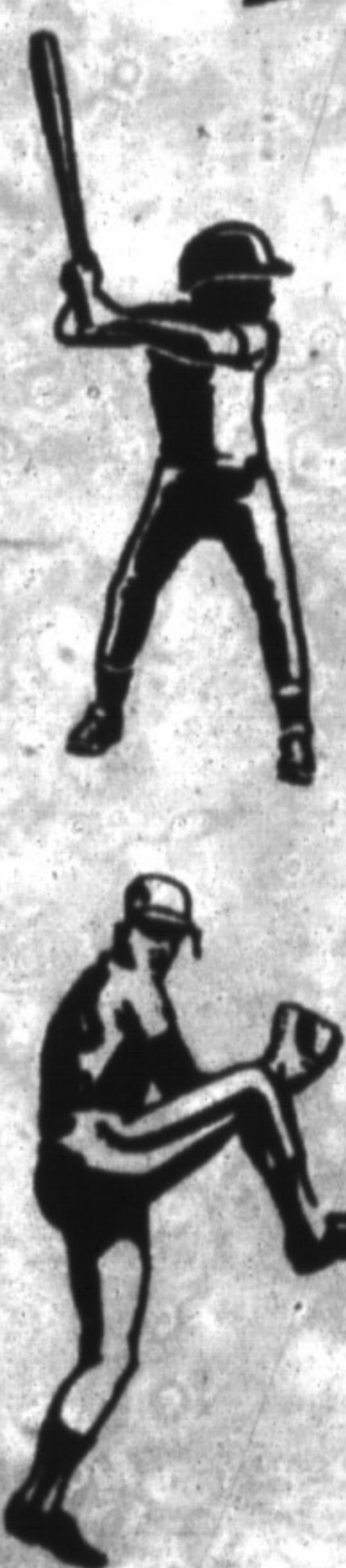
Relieve your anxieties about paying rent with this townhome close to shopping, schools, parks, tennis club and more. And if you're not a keen grass-cutter, you'll be relieved to find that all the outside maintenance is done for you. \$134,900.

GREAT CATCH

Total redecoration, new broadloom, new flooring, upgraded windows, finished basement, good area...doesn't this sound like a great catch? \$194,900.

COMPLETE LINEUP

Give me a call for details on these and other homes in the Milton area. I can tell you about the complete lineup of homes available.



JEAN SNOWDEN

Sales Representative
878-2365 or 878-3155

