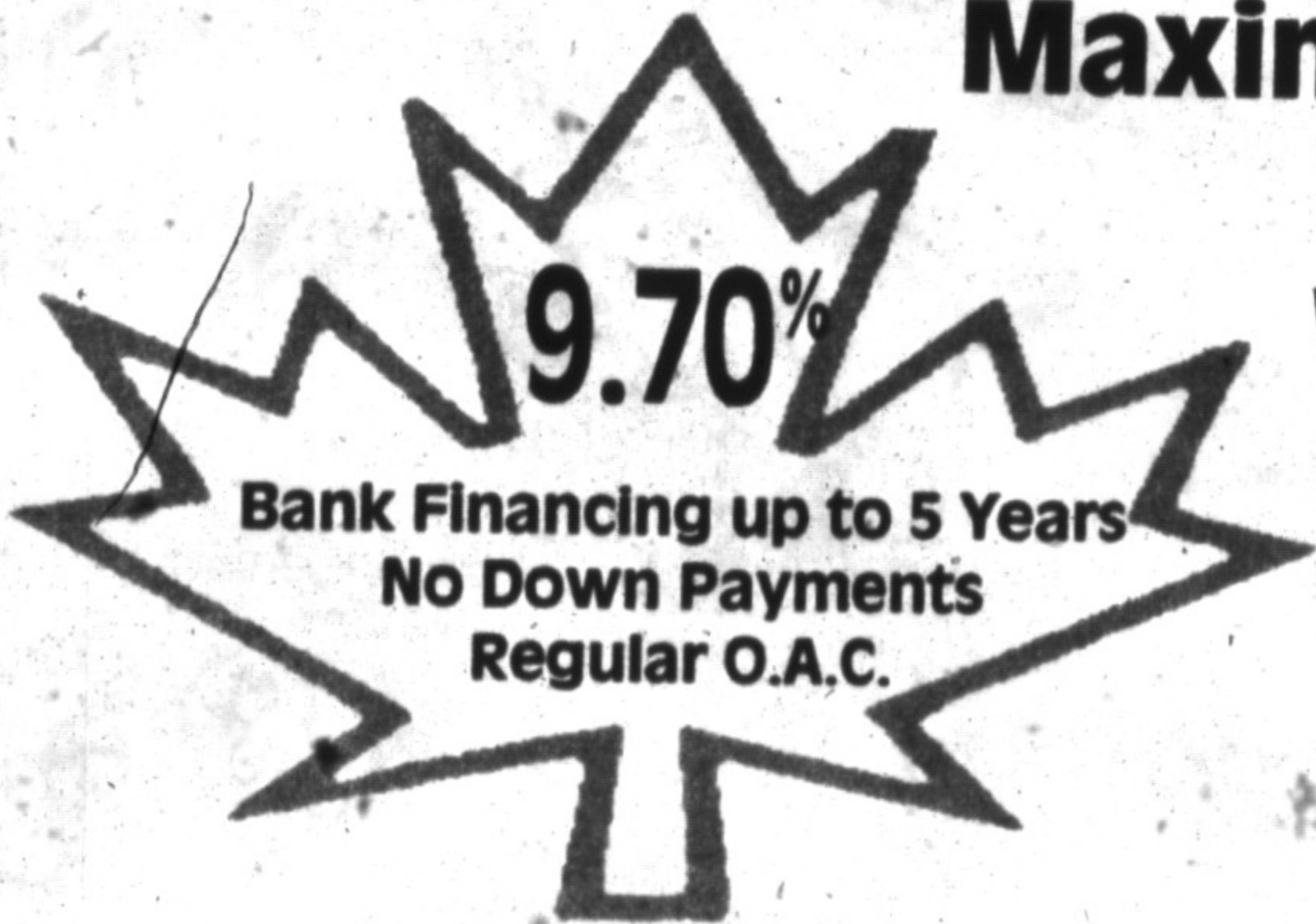


NO PRESSURE

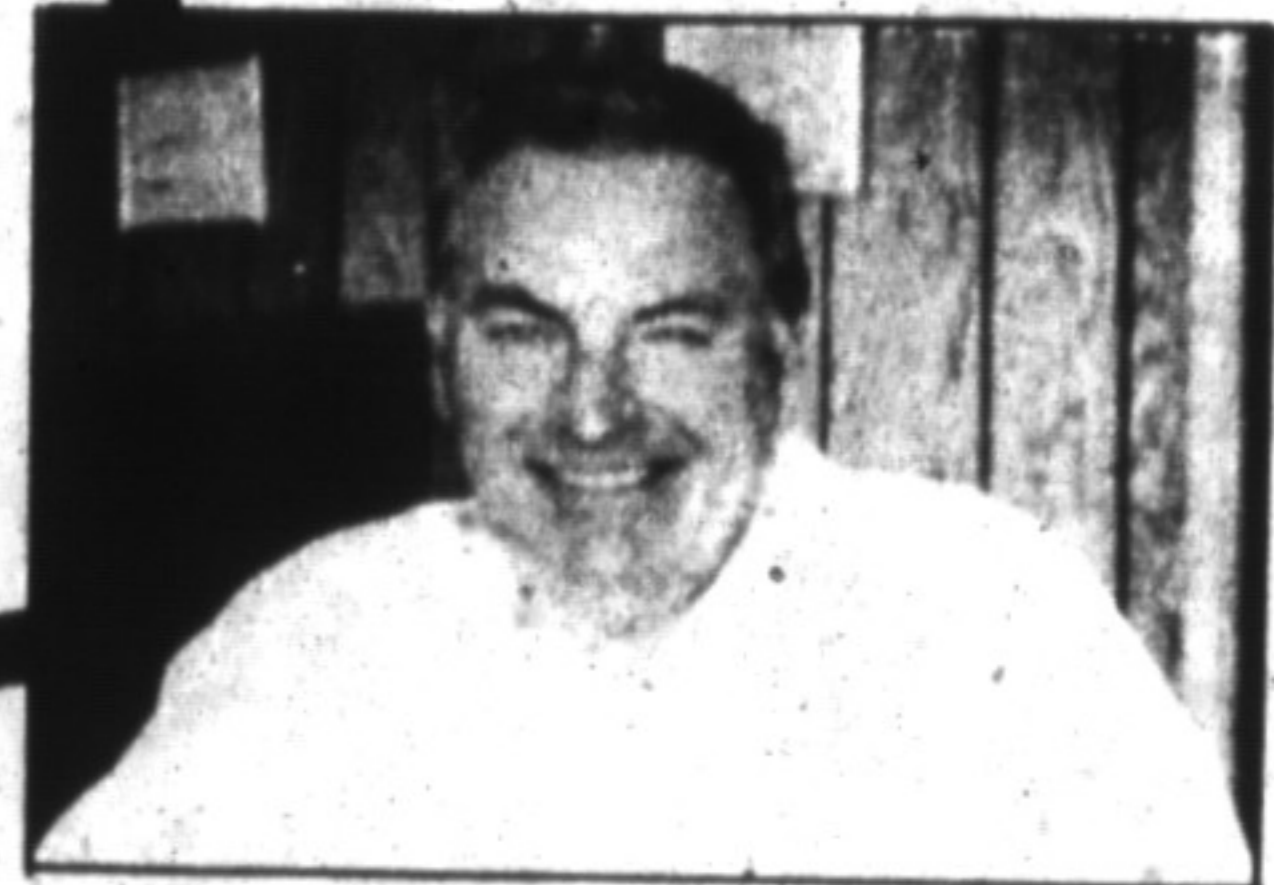
NORM'S BIRTHDAY SALE!

FOR OUR CANADA'S BIRTHDAY SALE

Maximum Discounts Applied



ALL 1992 STOCK
PRICED TO CLEAR



DEAL WITH THE BOSS

COME AND BROWSE

<p>1992 SENTRA DLX Auto., am/fm cass. Stk. No. 2543. Reg. \$12,975* with air cond. or buy without air cond. for \$11,575*</p>	<p>1992 SENTRA XE 5 spd., am/fm cass., cruise. Stk. No. 2599. 6 yr./100,000 km warr. No deductible. Reg. \$13,205. \$11,895*</p>	<p>1992 SENTRA GXE Auto., white, air, p.w., p.d.l., cruise, many more std. features. Stk. No. 2592. Reg. \$16,190. \$14,495*</p>
	<p>3 IN STOCK </p>	<p>1 IN STOCK </p>
<p>1992 SENTRA GXE Black, automatic, air, am/fm cass., power windows, power locks. Stk. No. 2604. MSRP \$16,290. \$14,595*</p>	<p>1992 MAXIMA GXE Auto., air, beige exterior & interior, fully loaded. Reg. \$24,290 or lease from \$399 per month. \$22,495*</p>	<p>1992 STANZA XE 5 speed, air conditioning, am/fm cassette. Stk. No. 2521. Reg. \$16,995. \$14,995*</p>

*Plus freight & taxes

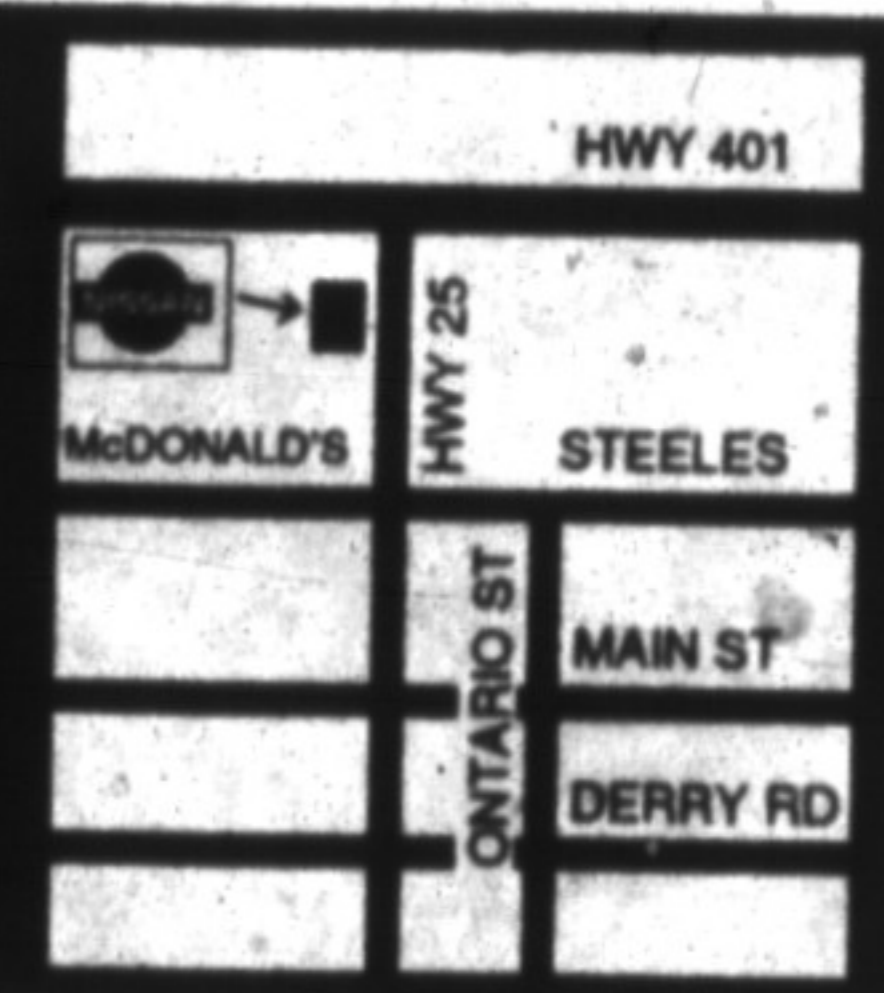
FOR DETAILS CALL OUR SALES STAFF

*48 mo. O.A.C., \$2200



NORTH END NISSAN
610 MARTIN ST., MILTON
878-4137

SERVING MILTON & AREA FOR OVER 30 YEARS



1993 MODELS NOW ON SALE ASP II
Added Security Plan