

Best Homes

Your Milton Real Estate Marketplace

For more information call:

Tracy Lyons

878-2341



PRICE: \$439,000
 LOCATION: 5 minutes from Mohawk Raceway
 SIZE: 31-1/2 acres
 INCLUDES: Modern home with self-contained apt, 2 barns, 19 box stalls, training track including grooms' quarters, run-in shed, six paddocks and training track.
 Century 21 Kingsbury Real Estate Ltd.
 ARNOLD SASEK or JOE MAKOWSKI
 (416) 238-3377

JOYCE SCOTT REAL ESTATE INC.

JSR

Just some of the reasons why you should list & sell your home with Joyce.

- ★ Vice President of the Independent Real Estate Brokers Association of Canada.
- ★ 14 Years of integrity and satisfaction.
- ★ Constantly updating professional knowledge.
- ★ Many satisfied customers.
- ★ Many repeat customers
- ★ Member of Multiple Listing & Selling Services.



JOYCE SCOTT
 BROKER-OWNER
 878-1526

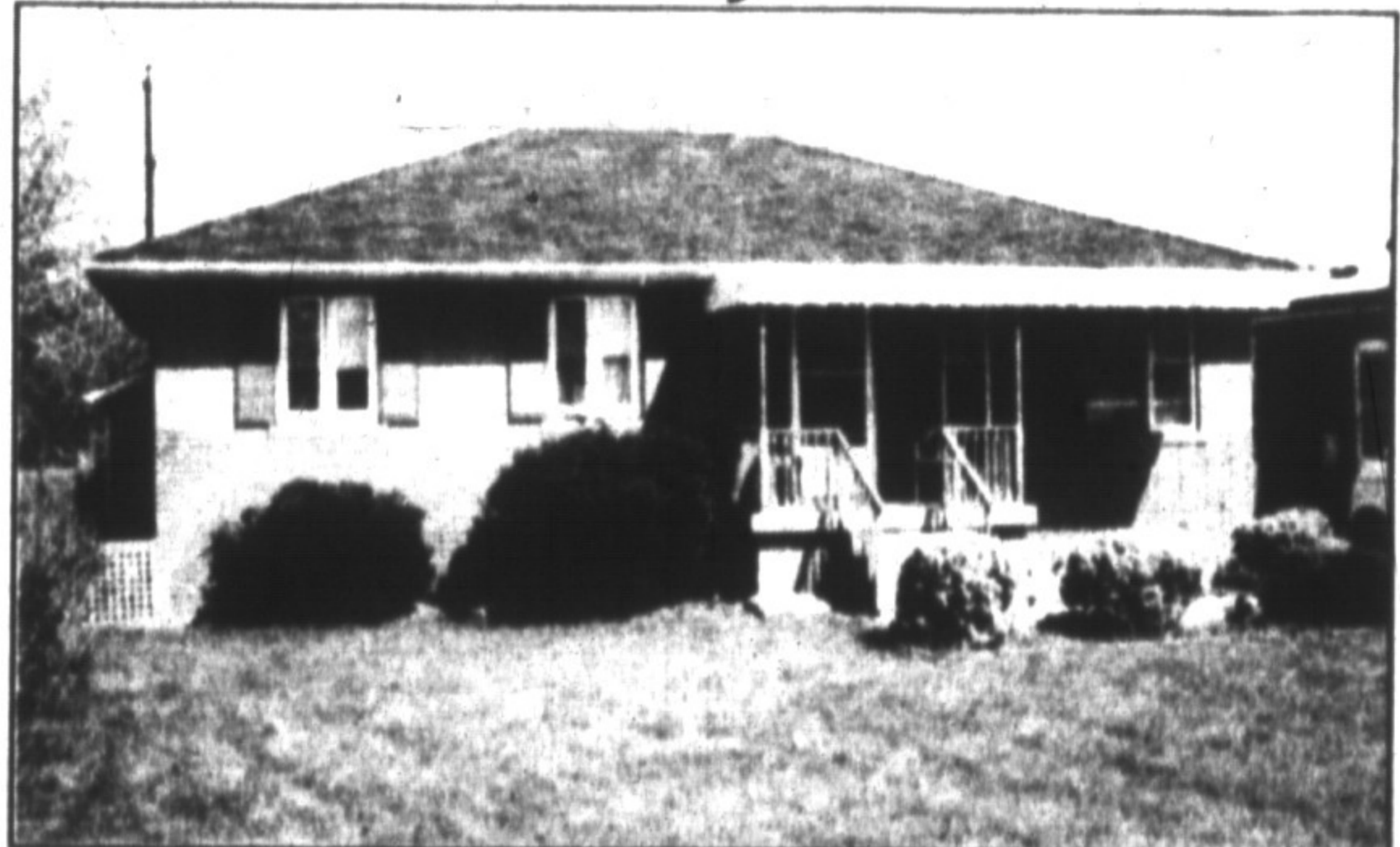


Call Today!

Canada Trust Realty

Canada Trust Realty Inc. - Realtor

★ ★ ★ \$183,900 ★ ★ ★



CONCRETE POOL

3+1 Bedroom, Finished basement, 2 baths, garage, 50'x150' lot

Call GORD FLEMING, Sales Rep. 438-2201

REAL ESTATE



Beautifully Restored Century Home with 150 acres & lake. Only 5 minutes to Hwy. 401, 1 concession east of Hwy. 25, Halton Hills. Offered at \$895,000. Fall occupancy.

Mary Lynn Crispin
 Real Estate Broker
 R.R. #5, Milton, Ontario
 876-2800

Town & Country Specialist



ROYAL LEPAGE Advantage



SECLUSION ON 5.8 AC \$349,000

Price has been reduced on this immaculate bungalow. Walkout from lower level to pool & a view of your property, small barn, 4 mins to 401. Ed or Norma Proveau*878-8101.



NEW LISTING \$182,900

Immaculate 3 bedroom home, main floor family rm; rec rm, with wet bar, walkout to deck and lovely privacy fenced lot. Call Norma or Ed Proveau*878-8101.



RURAL - REDUCED TO SELL! \$269,900

4 bedroom, cathedral ceiling & hardwood floors, floor to ceiling fireplace on 9 lovely fenced acres. Only 5 minutes to 401. To view call Norma or Ed Proveau*878-8101.



SOUTH OF CAMPBELLVILLE

\$599,000 two storey, 4 bedroom tudor boasting 2 fireplaces, 3 baths, central air, vac, intercom, security, on 4 acre with a pool and tennis court. Less Bunker*878-8101.



A WORLD OF LIVING

Can be yours in this immaculate home, 4 bedrooms, family room with patio doors to beautifully landscaped lot and inground pool. Listed \$270,900. Call Barbara Ramsden*878-8101 for more information.



THIS HOME IS A WINNER \$349,900

Nestled on a picturesque 1 acre ravine lot, beautifully landscaped, 4 bedrooms, finished rec rm, with fireplace & bar Games rm, 3 baths, for more information Please call Helen Hardy*878-8101.



CAMPBELLVILLE COUNTRY \$429,000

This new home on a one acre lot awaits your inspection. Many extras include oak kitchen, 2 fireplaces, 5 bathrooms, large family room and finished basement with walkout. Ross Runnalls*878-8101.



SACRIFICE SALE ASKING \$549,000

This spectacular property must be sold! 50 acres overlooking Rattlesnake Point. Large stone house awaits your ideas many, many possibilities. Ross Runnalls*878-8101.



LOTS OF ROOM FOR A GROWING FAMILY - \$188,000

A huge Hollywood it. with sep. eating area, 4 bdms, lrg main flr fam. rm. with F.P. and a walkout to a wooden deck, separate entrance leads to a part fin. basement (in-law apt. potential) call Sandy Del Papa* 878-8101.



SOLD

"PRICE BUSTER" \$159,900

Large, airy, eat-in kitchen with sliding patio door walkout. Spacious master suite with private bathroom entry. Two additional family size bedrooms, a convenient main floor powder room, all yours for the picking. Call Steven J. Porter*878-2582 direct.

C-1 COMMERCIAL MAIN STREET MILTON \$530,000 Great location for business or professional offices, lot size 184' X 132'. Helen Hardy* 878-8101.

SCENIC ESCARPMENT ESTATE - 24 ACRES

\$517,000 nestled on beautiful ac with mature maple bush & the 16 mile creek winding through. This executive bungalow features lrg living rm, dining rm, with picture windows, lrg family rm with f.p. & cathedral ceiling, country kitchen with lrg breakfast rm & adjacent garden rm, in-law suite etc. Inge Winther* 878-8101.

HOW'S THIS FOR VALUE \$209,000

4+ bedrooms, large eat-in kitchen, dining room with patio doors to lovely deck, plus lots more call Barbara Ramsden*at 878-8101.

SUPER BUY \$184,900

2 storey, 3 bed home, walk-out from family room, lots of room for your family. Just move in. Call Barbara Ramsden* for your personal inspection 878-8101.

BUILDING LOTS AND ACREAGE

- 5 acres log house dog kennels licenses close to town
- 1 1/2 acres hillside lot must sell \$139,900
- 1 1/2 acres treed lot \$129,000
- 1 1/2 acres hilltop view \$134,000

DENZIL LAWRENCE* 878-8101

ACREAGE

- 117 acres close too town \$1,349,000
- 132 acres, three frontages stream pond \$8,200 per acre approx.
- 80 acres hobby farm building site \$249,000.

DENZIL LAWRENCE* 878-8101



TAKE A PEEK AT WHAT'S NEW!

\$172,900. Young families this 3 bdrm home is perfect for you. It offers eat-in kit. with W/O to fenced yard - ln. rec. rm & laundry rm. in basement - upgraded brdm & cent. air. Arena & playground nearby. Sandy Del Papa* 878-8101.



A DEE-LITE-FUL SEM....

Very private on a 48 x 407 ft. lot. Two car garage. Admire the landscaping, more so the many improvements of this attractive home \$169,900. Contact Rudy Arbetter* 878-8101.

388 MAIN ST. EAST

ROYAL LEPAGE

878-8101 (Tor. Line) 826-9218
 Toll Free 1-800-263-4176