

DATELINE

Friday June 12

Hillcrest United Church, 8958 Trafalgar Road, holds a **beef barbecue** from 6 to 8 p.m. The menu also includes baked potato, Caesar salad, roll, and homemade dessert. A take-out service is also available. Tickets cost \$10 for adults and \$7 for children aged 12 years and under. For tickets, call 878-1520.

The Bishop Reding Parents' Association presents its first annual **spring dance — Fifties Fling** — in the school cafeteria and piazza from 8 p.m. to 1 a.m. The night includes a draw for the \$5,000 grand prize, live band, prizes for best '50s costumes, and light supper. Cash bar. Tickets cost \$20 per person or \$35 per couple. Call Gerry Rooney at 878-3336 or Jane Kesik at 878-4368.

Parents FLAG (Parents and Friends of Lesbians and Gays) meets at Christ Church, 4 Elizabeth St., N., in Brampton at 8 p.m. For more information, call 457-4570.

Saturday June 13

The Milton Springers Gymnastic Club presents its year-end show **Gymstrada '92** at 180 Nipissing Rd., Unit 5. Show times are 3 and 7 p.m.

First Community Church holds a **garage and bake sale** at 862 Anderson Ave. at 8 a.m. Proceeds go to church work.

The Blair Presbyterian Women of St. David's Presbyterian Church holds a **yard and bake sale** from 8 a.m. to 12 noon, rain or shine. The church is located on Guelph Line, just south of Highway 401, in Campbellville.

The **Milton Tennis Club** celebrates **National Tennis Week**. Join in a Round Robin and receive a chance to win tickets to see the Players Ltd. International Legends of Tennis at York University. The open house takes place from 1 to 4 p.m. Refreshments available. For more information, call 878-5125.

Sunday June 14

Canada 125 Neighbourhood **Picnic in the Park** takes place in Victoria Park from 11:30 a.m. to 3 p.m. A seniors' centre craft sale, hot dogs, cake, and drinks, as well as entertainment for the whole family is part of the fun. The event is being organized to celebrate Canada 125, Seniors Awareness Week, and Good Neighbours.

All Halton Division Guiders, past and present, are invited to attend a **reunion tea** at St. Alban's Anglican Church on Main Street in Glen Williams from 2 to 5 p.m.

Five local congregations are joining together for worship at Bishop Reding School in **Standing Together for the Sake of the Kingdom** at 11 a.m. Milton Alliance, Milton Baptist, Covenant Life, St. George's Anglican, and St. John's Anglican churches meet to worship God. Regular services at the churches are postponed for the event.

Warm a Child's Heart Concert takes place at Holy Rosary Church at 7 p.m. The concert features Father Mark Curtis and the Halton Region Police Chorus. Tickets cost \$7. Children under 12 years of age and unwaged are admitted free. Obtain free tickets in advance. To order, call 878-2410 or 876-3377.

The Optimist Club of Milton holds a **bicycle safety rodeo** from 12 noon to 3 p.m. at the Canadian Tire parking lot. All children over 6 years old who own bicycles may attend. Free draws for bicycles and numerous other prizes are held. All entrants receive hot dogs and drinks as well as goodie bags. The event is co-

sponsored by Canadian Tire, Harvey's, and Halton Regional Police.

Monday June 15

The fifth annual **Shuffleboard Tournament** between Town staff and Milton seniors takes place at the Milton Senior Citizens Recreation

Centre, 21 Charles St., at 1 p.m. Cake, ice cream, and lemonade are all free. Interested shuffleboard players call 875-1681.

Tuesday June 16

The Victorian Order of Nurses holds a **foot care clinic** at the Bruce

Street apartments, 40 Ontario St., from 1:30 to 4:30 p.m. The cost is \$15. Call 827-8800.

The **Alzheimer's Family Support Group** meets in the Pettit House at Halton Centennial Manor from 7 to 8 p.m. For more information, contact Yvonne Stupak at 878-4141.

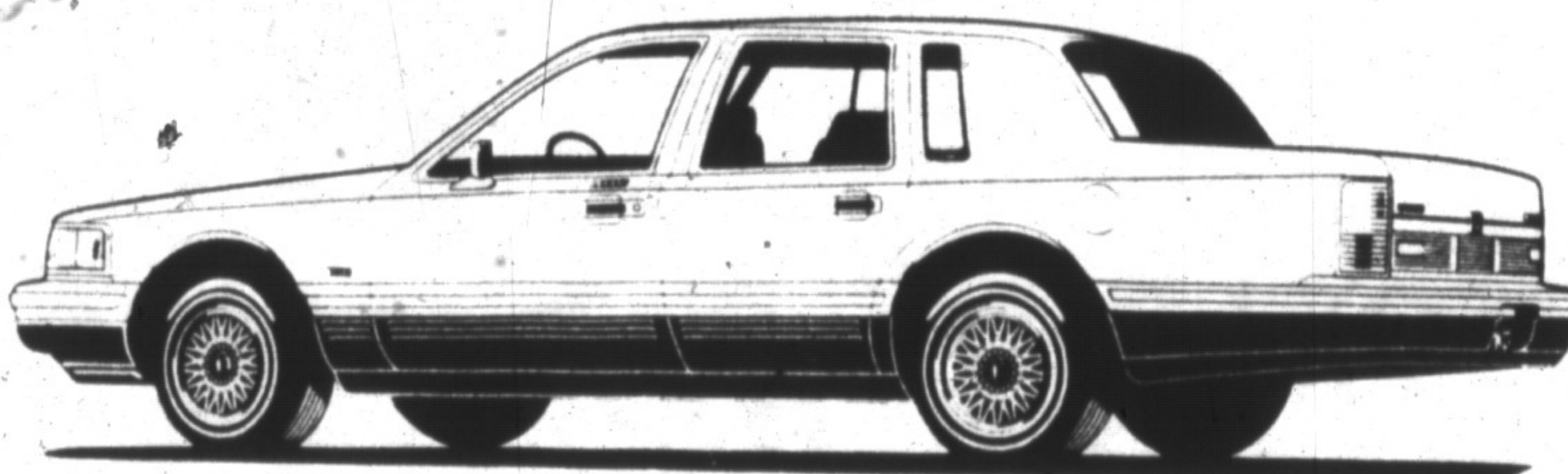
Wednesday June 17

Women interested in **breastfeeding information and support** are welcome to attend the next meeting of the Milton LaLeche League. The topic is "Planning for Baby." Call 878-4803 or 878-6387.

Why Not... You've Earned It!

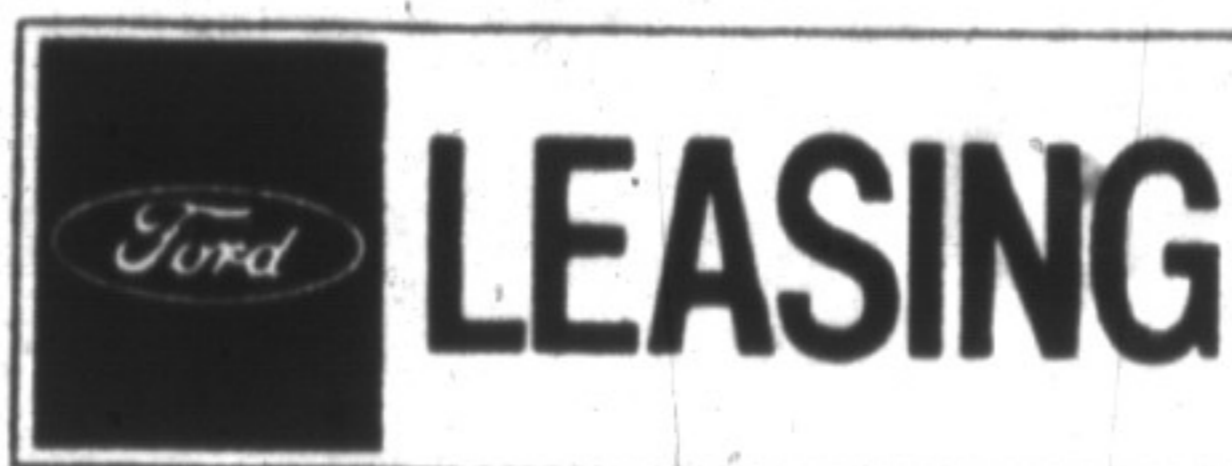
New 1992

LINCOLN TOWN CAR



SIGNATURE SERIES

4.6 L, 4.8 Automatic Overdrive, **Automatic Air Conditioning**, Power Windows, Power Door Locks, Power Driver and Passenger Seat, Power Antenna, Power Deck Lid Pull Down, AM/FM Cassette Stereo, Head Lamp Convenience Group, Luxury Cloth Interior, **4 Wheel Disc/Anti Lock Brakes**, Keyless Illuminated Entry System, Lower Body Side Accent, Cornering Lamps, **Driver and Passenger Side Air Bag**, Floor Mats, Aluminum Wheels, White Clear Coat Exterior, Titanium Cloth Interior. Stk # 2577.



0-DOWN **\$5,000-DOWN**
\$705⁰⁰ **\$578⁰⁰**
/per month /per month

**FREIGHT, AIR TAX,
GAS TAX,
TIRE TAX INCLUDED**

The Lincoln Commitment Card
Soon after taking delivery of your new Lincoln, you'll receive the prestigious black and silver Lincoln Commitment Card. To that end, Lincoln covers the total cost of all repairs and adjustments to correct defects in factory materials and workmanship. For 4 years or 80,000 kms whichever occurs first, with no deductible fee.

LINCOLN
COMMITMENT

Lincoln Roadside Assistance
From the day you receive your new Lincoln, for the next 4 years (48 months) you will have access to Lincoln Roadside Assistance at no added charge.

* Leasing based on 48 months, 100,000 kms. Option to purchase at the end of lease. Prices plus applicable taxes and rental deposit. Expires June 30.

GALLINGER

MOTORS LIMITED

655 MAIN STREET EAST, MILTON • 875-FORD • (416) 1-800-268-5042
SALES • LEASING • RENTALS • SERVICE • PARTS • BODY SHOP

