

NEWSLINES

Fast beds uncovered

Bargains and a bed race are expected to bring shoppers and sightseers into the downtown core on Friday and Saturday, June 19 and 20.

What has become an annual tradition, the Moonlight Magic sidewalk sale, will take place from 6:30 p.m. through to 11:30 p.m. on June 19. Main Street will be closed to vehicles.

As far as the bed push the next day, it'll be an uphill climb. Pushers are expected to propel a twin bed up the gentle slope of Main Street from Martin to James streets.

Various Downtown Business Improvement Area (DBIA) merchants are expected to take part. The event gets underway immediately following the Farmer's Market, at noon. There are three to a team, and one has to ride on the bed.

Those interested in entering teams should contact the DBIA at 876-2773 by Friday (May 15).

INSIDE



Memories

Hundreds strolled down memory lane on Saturday with former classmates and teachers. The Bruce Street School Reunion is being called a success by organizers. The man of the hour was Edgar Foster, former teacher and principal at the school which was closed in 1972.

See page L51

Features

- Police4
- Photo contest5
- Letters7
- Hospital News9
- Sports11-14
- Classified16-19
- DatelineLS6
- Real EstateRE1-8

H&R BLOCK

CANADA'S TAX TEAM
THANK YOU MILTON.
For year round service contact us at:
374 Brant St., Tel. 639-7625
Burlington

Tree cutting slammed

By ROB KELLY
The Champion

Despite the deep-rooted concerns of some Nassagaweya residents, town work crews aren't hewing through roadside trees and destroying them needlessly, public works director John Matthews told municipal councillors Monday night.

Saying he would dearly appreciate being able to put the matter to rest, Mayor Gord Krantz asked Mr. Matthews directly, "has there or not been indiscriminate tree cutting? Do we owe the public an apology?"

"We do not consider our operations indiscriminate," Mr. Matthews replied. At worst, town staff may be guilty of making judgements to cut down a tree in "the odd borderline" case, he added.

The discussion was prompted by the appearance of Jack Mowbray, who represented a new rural citizens group called the Roadside Heritage Trees Society of Nassagaweya. They're intent on planting trees in denuded or damaged areas of the rural community west of urban Milton and the Niagara Escarpment. They also say they're alarmed at the policy and pace of town tree cutting.

"Our concern is that roadside trees are being cut down with little regard to ecology, maintenance or heritage," Mr. Mowbray told council's general committee.

"So there's possible indiscriminate cutting, is that the case?" asked Mr. Krantz.

"Yes, I think in some cases yes," see REPLANTING on page 3

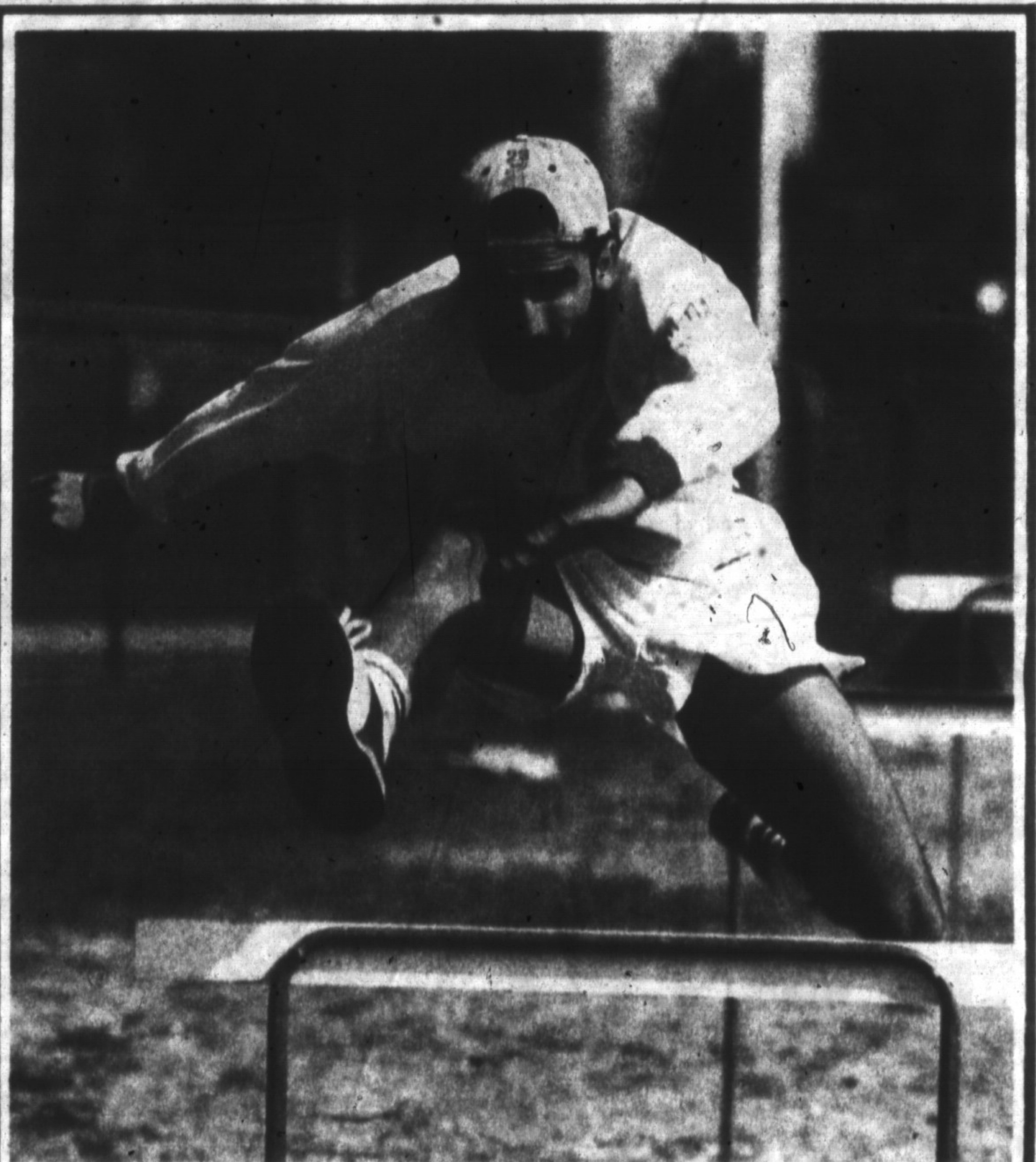


Photo by GRAHAM PAINE

Bar Hopping

Gary Hans, an 18-year-old student at Milton District High School gets in some practice in his event, the senior boys hurdles. Gary will be among the Milton contingent of athletes competing at tomorrow's (Thursday's) Halton Regional track meet at Burlington.

Man arrested following assault



Photo by GRAHAM PAINE

Halton police Acting Sergeant Marty Power (centre) searches a suspect following an assault on a 36-year-old Milton woman in the Carriage Square parking lot Monday night. Assisting in the arrest are constables Gregg Sullivan (left) and Craig Bowen.

Police break down door to find suspect

Halton police broke down the door of a Martin Street apartment to arrest a suspect minutes after a woman was assaulted in the Carriage Square parking lot Monday night.

A 36-year-old Milton woman was hit and kicked in the face by a man who fled the west end of the Main Street lot when another man intervened.

Police arrived at the scene at about 7:15 p.m. and were directed to a suspect seen by witnesses entering an upstairs apartment at 8 Martin Street, just north of Main Street.

When the suspect refused to answer the door, police forced it open and apprehended a man in the back bedroom.

The victim was treated for facial injuries at Milton District Hospital and admitted overnight for observation.

A 37-year-old Martin Street man has been charged with assault causing bodily harm.

The suspect was held in custody for a bail hearing today at Milton provincial division court.

Long gets one more chance

By KAREN SMITH
The Champion

A judge has ordered a former Milton councillor be arrested if she does not attend court later this month to face charges in connection with a police chase in Brampton 14 months ago.

Mary Long, 46, who served a three-year term in Milton council from 1989-1991, was charged in March last year with dangerous driving, failing to stop for police, and driving while her licence was under suspension.

Ms Long was scheduled to appear in provincial division court Monday, but failed to do so due to poor health, said her lawyer Anthony Vale. A previous March 5 court appearance was also postponed for health reasons.

The crown attorney in the case argued that he suspected Ms Long was "avoiding a trial," but Mr. Vale maintained the former councillor is recovering from surgery performed in January.

see MISSED on page 2