

SPRING INTO A DEAL...

**FACTORY AUTHORIZED
SALE PRICES**

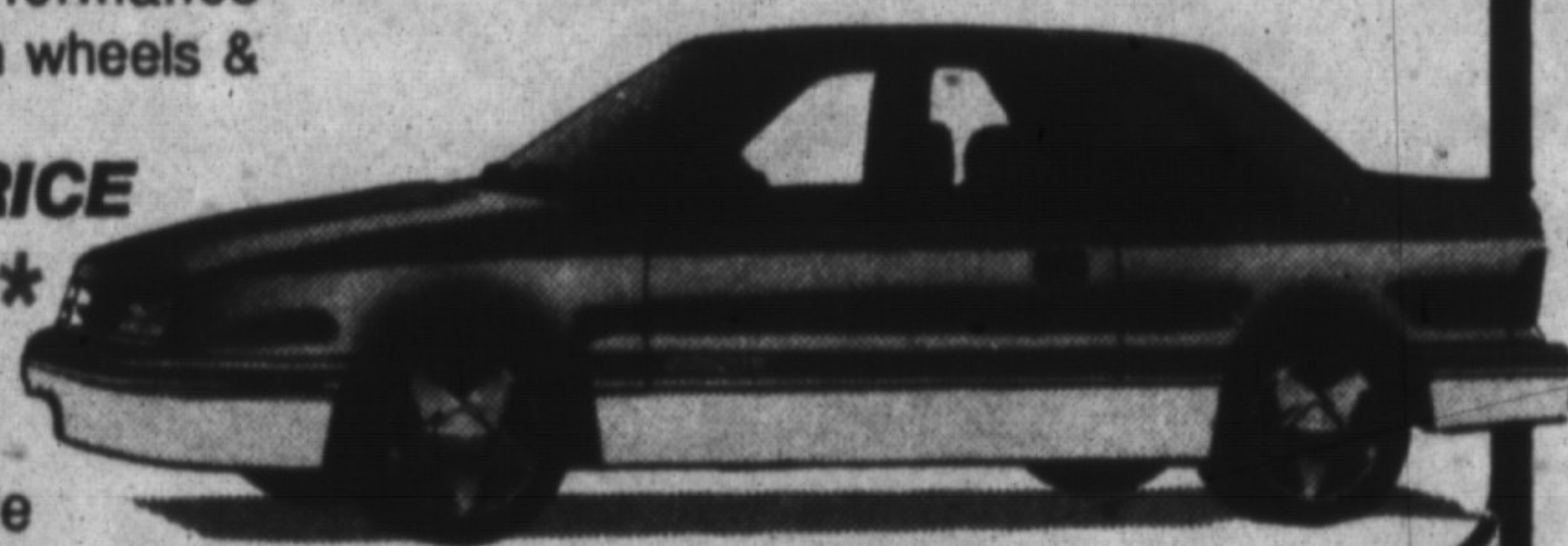
Introducing

The All New 1992 DODGE SHADOW ES 2 Door

3 litre SOHC EFI V6 engine, sports ratio 5 spd. manual trans., performance exhaust system, full console, front & rear floor mats, fog lights, dual horns, premium sound insulation, remote lift gate release, light package, AM/Fm stereo cassette, gauge package, vanity mirrors, fold down rear seat, intermittent wipers, full ground effects package w/ rear spoiler, performance suspension, 15" cast aluminum wheels & air conditioning.

INTRODUCTORY PRICE

\$11,995*
5 Available



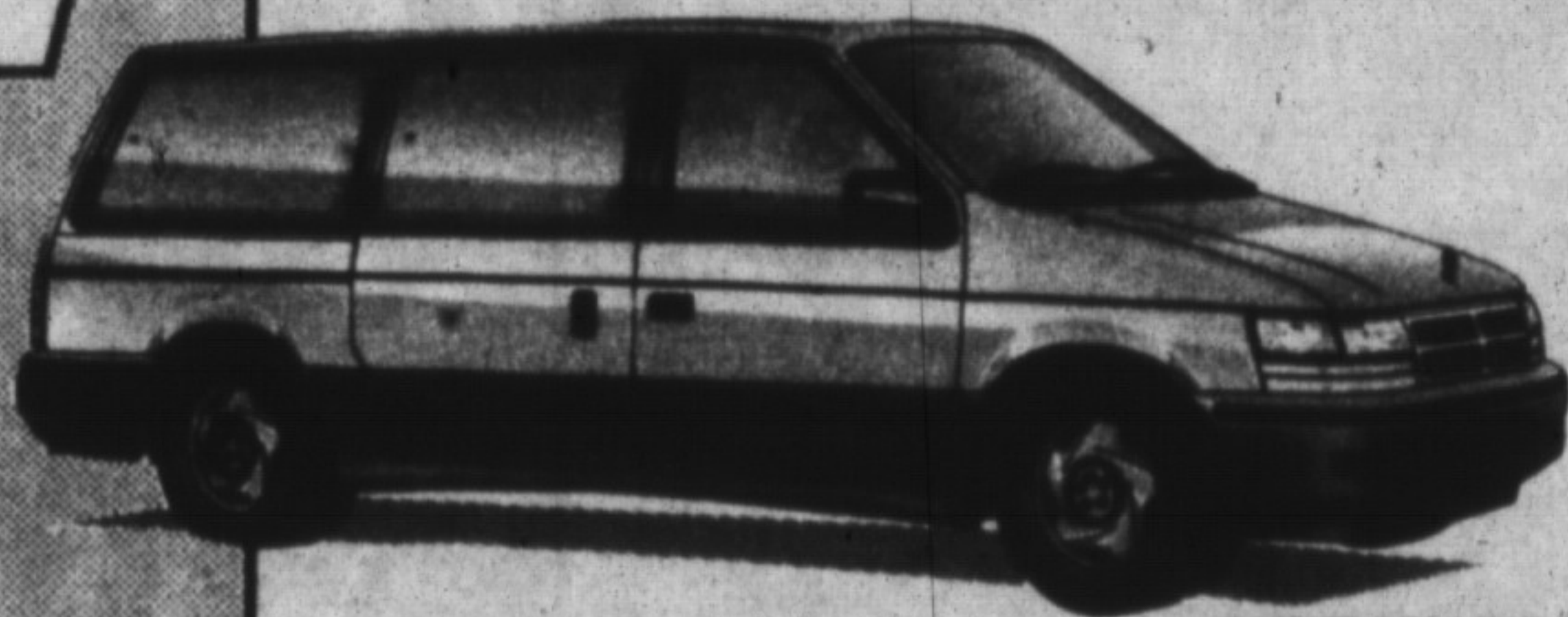
4.9%
Financing up to
48 months or
\$1250 CASH
TO YOU
REBATE

• ON THE SPOT
FINANCING AVAILABLE

• WE ACCEPT ALL
TRADES

• ON THE SPOT
APPRAISALS

1992 DODGE CARAVAN & GRAND CARAVAN BIG EVENT



"BEST SELLING MINI VAN IN THE WORLD"

37 AVAILABLE
6.9%

FINANCING
Up to 48 months or
\$1000
CASH TO YOU

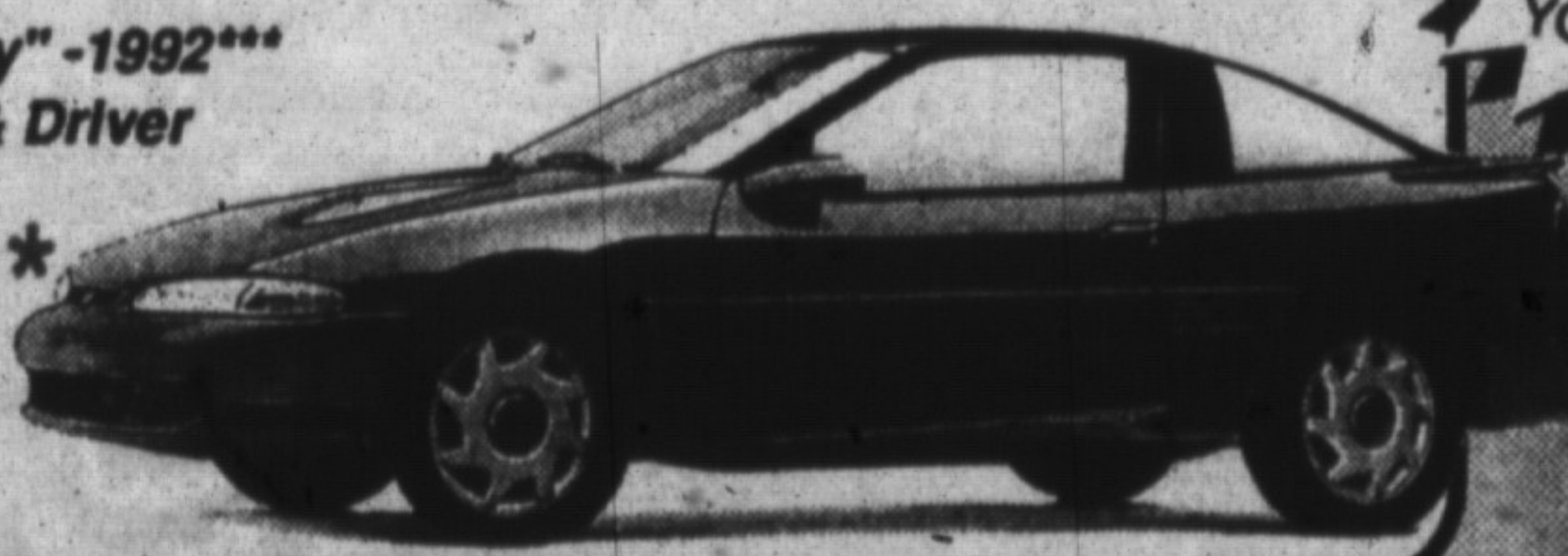
All Vehicles
In Stock
Ready for
Immediate
Delivery

1992 EAGLE TALON

2 litre, DOHC 16 valve EFI engine, performance ratio 5 spd. manual trans., 4 wheel power disc brakes, full floor console w/ arm rest, dual electric mirrors, AM/FM stereo cassette, split fold down rear seats, tilt steering, sport suspension pkg., 16 ply cast wheels, full ground effects and rear spoiler pkg., gauge pkg., intermittent wipers, rear wiper washer, speed control, air conditioning.

"Consumer guide rated best buy" -1992***
"One of the world's best" -Car & Driver

\$16,995*
7 Available



7.9%
Financing up to
48 months or
\$750 CASH TO
YOU REBATE

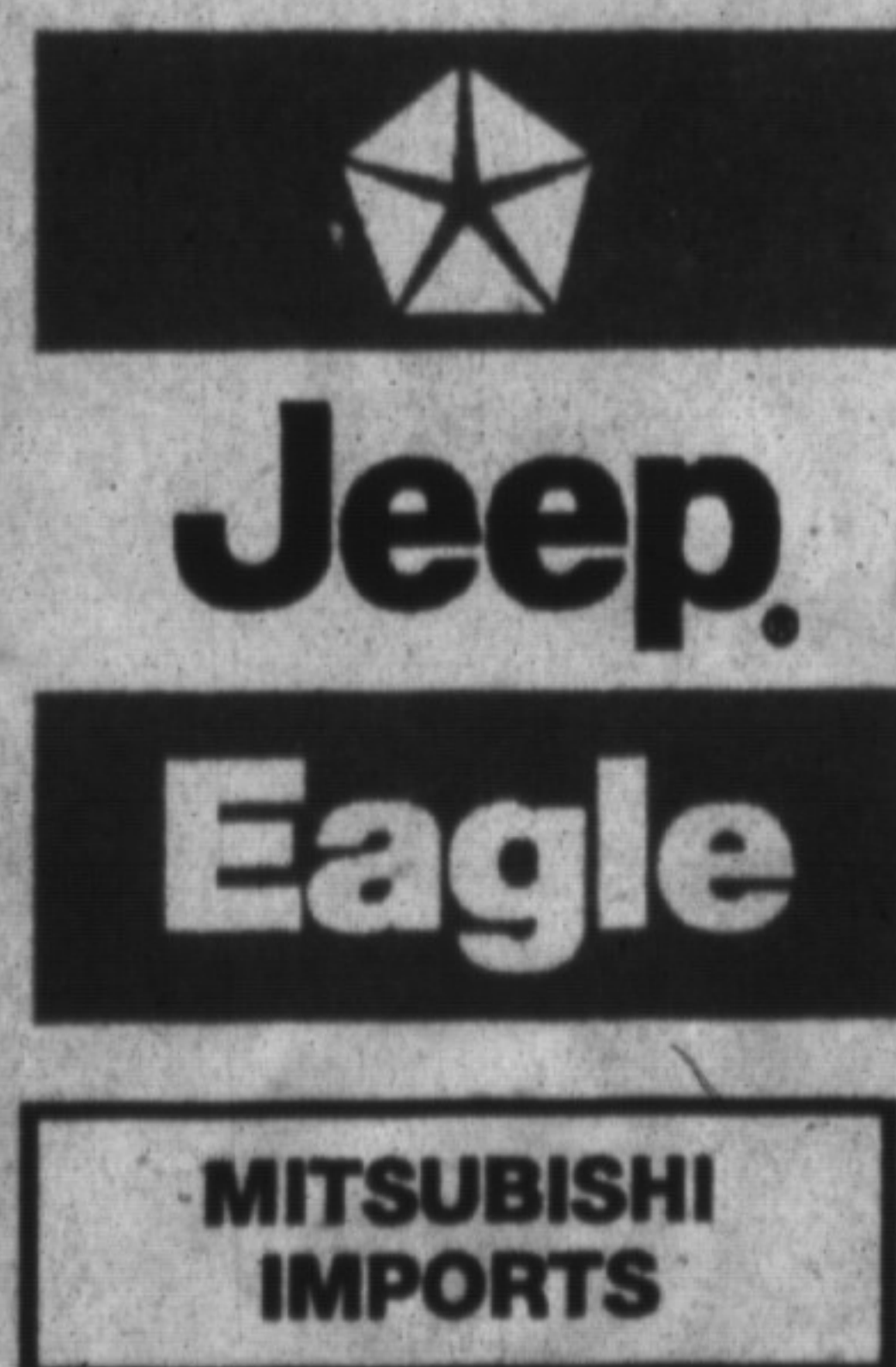
* All Sale Prices include Factory Rebate, plus applicable freight charges, air tax & applicable taxes.
***Special Low Financing Available in lieu of factory cash back rebates
****1992 American Consumer Guide Rating
See Dealer for Details

**EVERY NEW AND USED
VEHICLE IS ON SALE!**

THANK YOU MILTON SALE CONTINUES AT...



MILTON



CHRYSLER DODGE LTD.

• Great Service • Great Value • Great Prices

"Serving Your Automotive Needs For Over 30 Years"

SALES
878-8877

81 Ontario St. N. Milton

SERVICE
878-8808