

WHERE SALES & SERVICE IS GUARANTEED



HUNT

PLYMOUTH CHRYSLER

We took the CHALLENGE

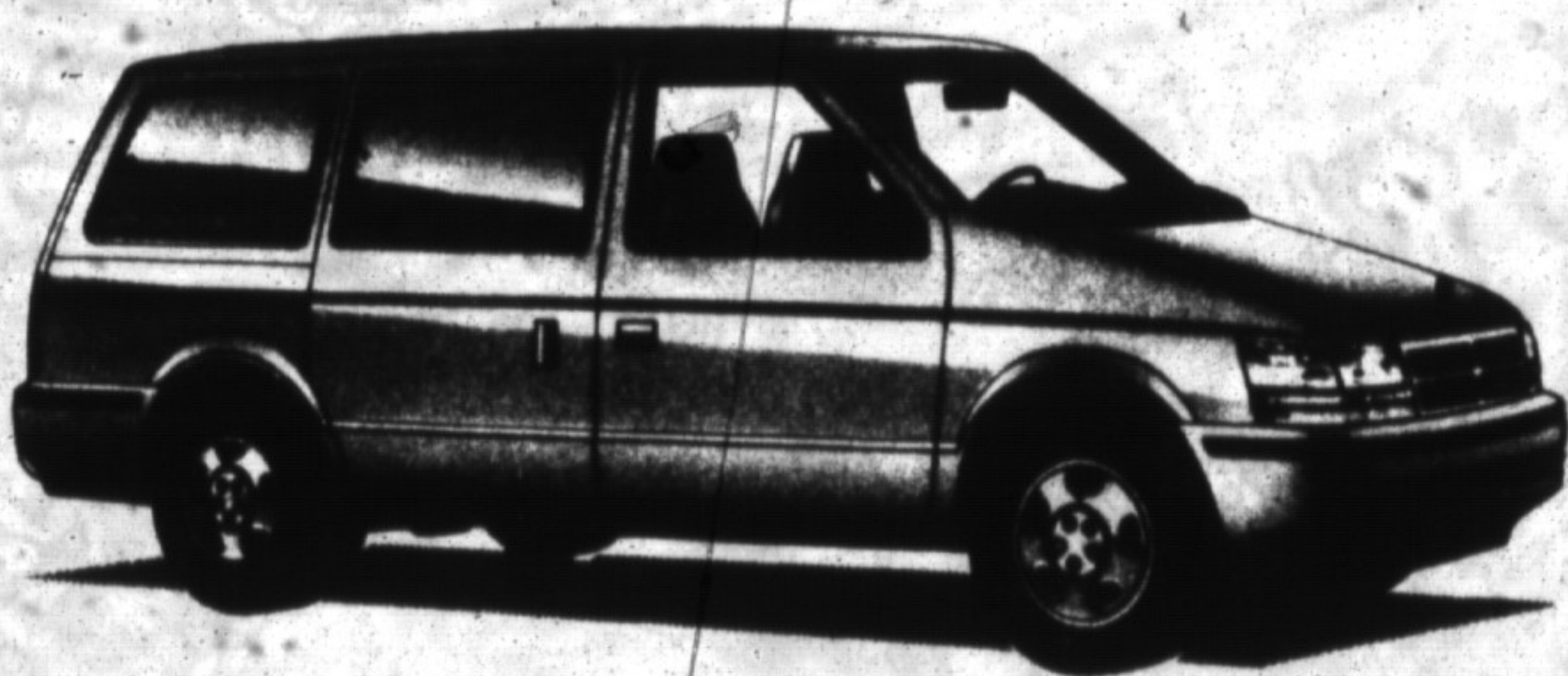
And did compare!

AT HUNT WE OFFER OUR VOYAGER'S WITH THESE AS STANDARD

- 3.0L OHC EFI V6 Engine
- Automatic Transmission
- Roof Luggage Rack
- AM/FM Cassette Stereo w/4 speakers
- Heavy Duty Suspension
- Deluxe Wheel Covers
- Drivers Side Airbag
- Power Steering

- Power Brakes
- Rear Window Defroster
- Tinted Windows
- Rear Window Wiper/Washer
- Dual Fold Away Mirrors
- All Season Tires
- Mini-Centre Console
- Dual Electric Horns

- 7 Passenger Seating w/front reclining cloth bucket seats
- Map and Tailgate Flood Lights
- Wide Colour Keyed Bodyside Moldings
- Lockable Underseat Storage Drawer
- Heavy Duty 600 Amp Battery
- 7 yr. 160,000 km Anti-Corrosion Warranty



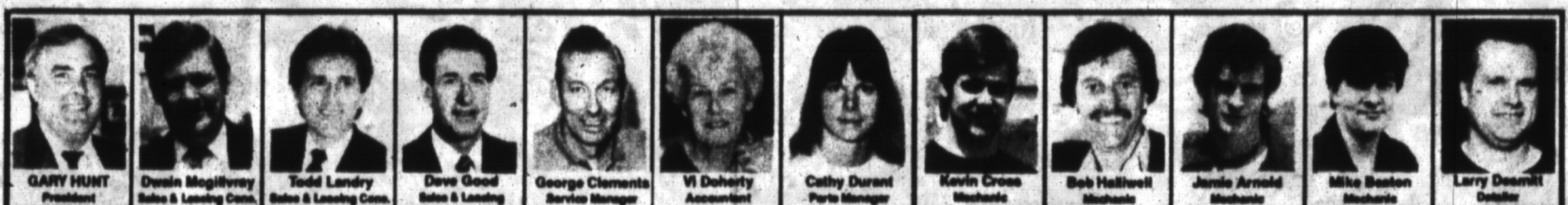
FOR ONLY

\$15,900*

MANY OTHER MODELS IN STOCK!

* + FRT (665) + Airtax (100) +
Applicable Taxes + License Fee
All Cash Backs Assigned to Dealer

• WE WANT YOUR BUSINESS — WE HONOUR ALL CHRYSLER, PLYMOUTH AND DODGE WARRANTIES



500 BRONTE ST., MILTON
876-2580

Tor. Line **542-7083**

SALE HOURS:
MON. - THURS. 9 - 9 P.M.
FRIDAY 9 - 6 P.M.
SATURDAY 9 - 4 P.M.

