

BEST HOMES

The Canadian Champion

Milton, Ontario

February 26, 1992



OWN A BIT OF THE AREA'S HISTORY

Enjoy the luxury of large sized rooms. Complete with high ceilings, tall windows and pine floors. This century beauty (circa 1850s) was formerly the Anglican Church manse and has been updated and restored with loving care. This .37-acre property is located in the heart of Milton amongst other grand older homes. Offered at \$357,000. Call me for your personal viewing.

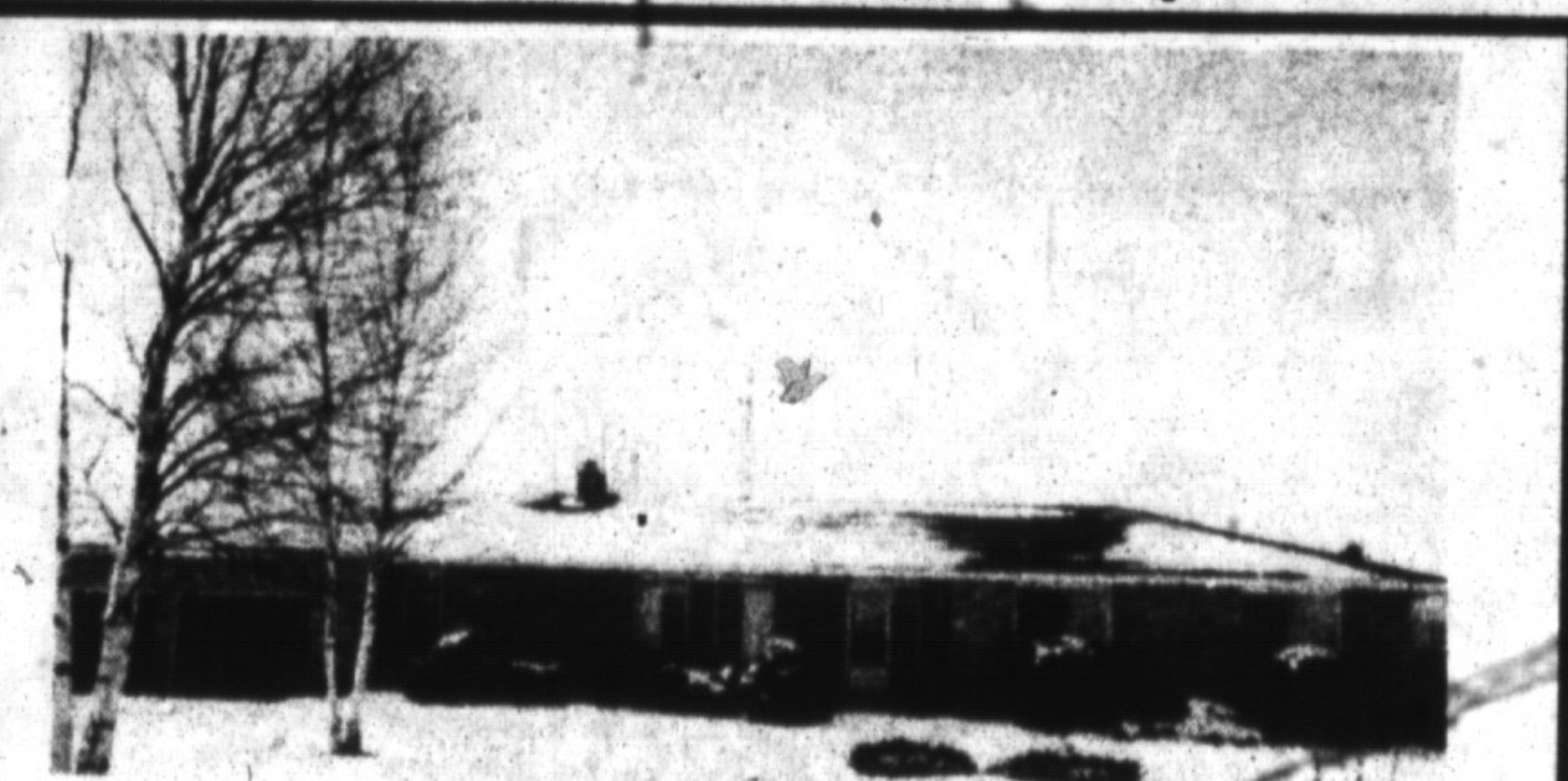
ROYAL LEPAGE REAL ESTATE SERVICES LIMITED
BARB LAFLECHE 878-8101



IMPORTANT INFORMATION BELOW

This attractive three-bedroom recently renovated 1903 farmhouse is for sale for \$319,900. This home comes complete with pine floors throughout, an Ikea kitchen; Two staircases - formal and butler's; a two-stall Gambrel horse barn with hydro, water and a hayloft. Added features include two fenced paddocks, and two porches (one main level, one second level) overlooking a maturely treed front yard.

ROYAL LEPAGE REAL ESTATE SERVICES LIMITED
WAYNE CASSON 878-8101



LOCATION, LOCATION!

Custom-built 4-bedroom home on 200 x 250 ft. lot. All-brick maintenance-free exterior. Double-plus garage. Home has large principal rooms, eat-in kitchen has lots of cupboard space. Main floor laundry and 4 & 3 piece baths. Large rec. room with brick floor-to-ceiling fireplace and bar. The implement shed is surrounded by fruit trees and grapes. Excellent soil for gardener.

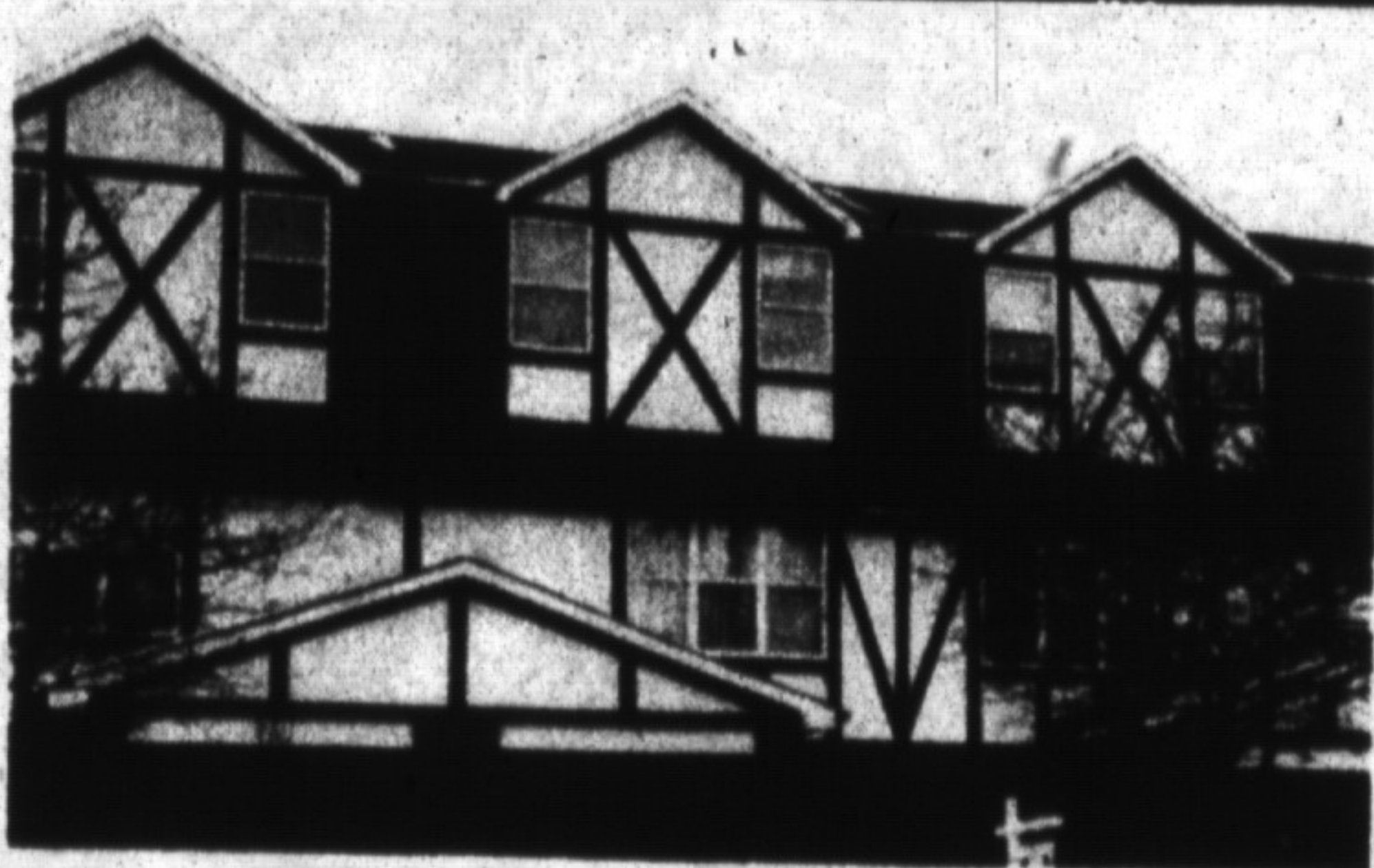
RE/MAX MILTOWNE REALTY CORP
FREDA LAWRENCE 878-2365



THE GREAT ESCAPE

35 private acres just five minutes from Campbellville and the 401. This property has it all - pond, stream, forest, great curb appeal and a beautifully built spacious bungalow - priced to sell at \$399,000.

RE/MAX MILTOWNE REALTY CORP
SHARON KERLEY 878-2365



FOR THE YOUNG AT HEART

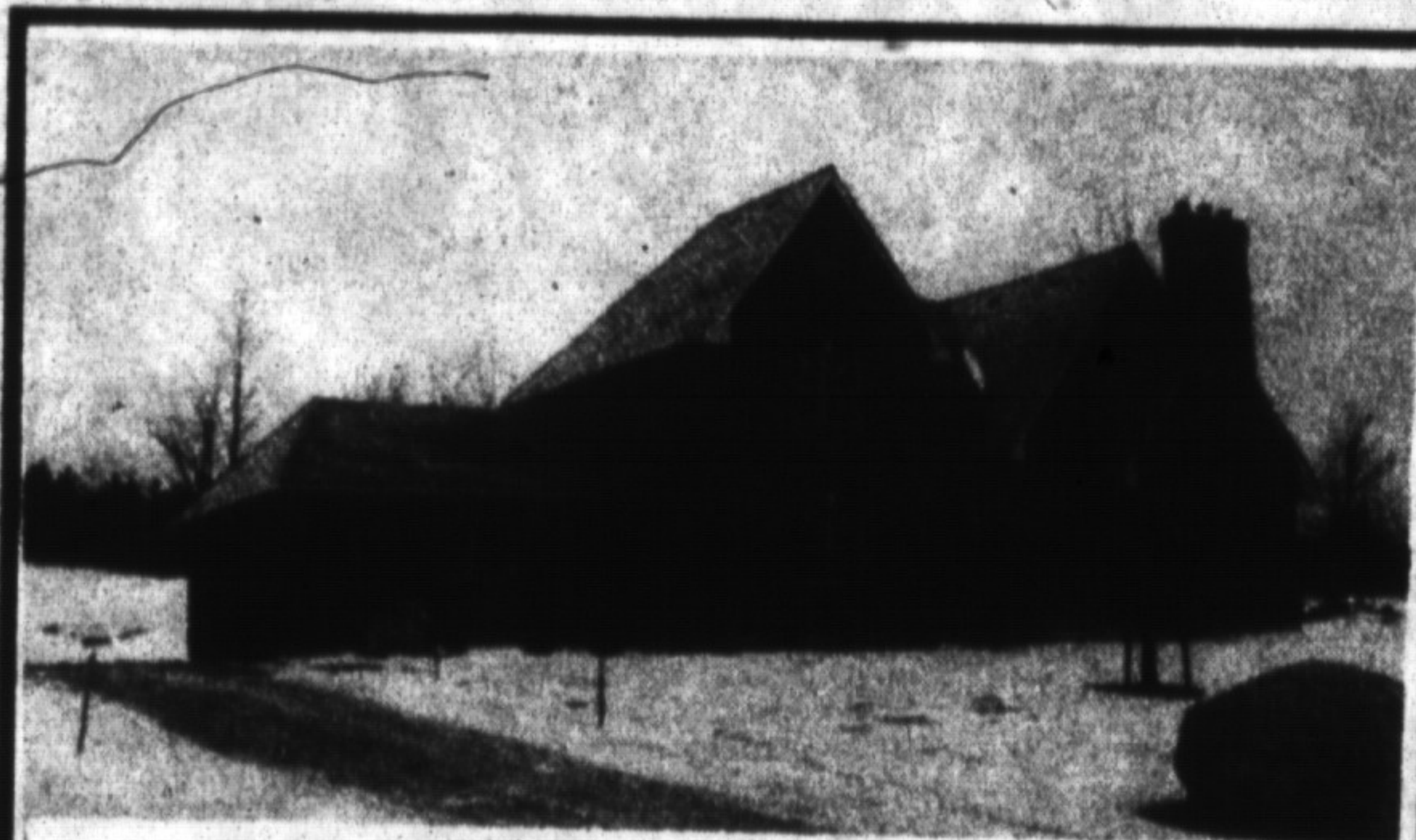
RATES are down and "INTEREST" is up!

Call us now and inspect with us . . .

. . . this beauty of a townhouse.

Listed at only \$134,800.

REALTY WORLD - W.J. McCRUDDEN REAL ESTATE INC.
JO-ANNE VAN-SLINGERLAND OR GLADYS CRANFORD 876-1133



BUILDER'S MODEL HOME LOADED WITH UPGRADES

Pick your own kitchen, colours and floor coverings. Large country kitchen, fireplace in family room, formal dining room, crown land at rear, beautiful country estate lot, only 20 minutes to Mississauga.

COUNTRYWIDE CAMPBELLVILLE REALTY INC.
GRANT MITCHELL 875-2294