

Dateline

Dateline is a free listing of coming events only, available to local community groups to assist in promoting their future events. Only charitable or non-profit community groups may use this service. We can only guarantee one issue of publicity closest to the date of the occurrence although more insertions are possible if other demand is low.

Notices for Dateline should be written and handed in at the office of The Champion, 191 Main St. E., or mailed to us at Box 248, Milton, Ont., L9T 4N9. The final deadline is noon Friday for Wednesday's edition and noon Wednesday for Friday's edition. No items for Dateline will be accepted by telephone.

Wednesday Feb. 5

Milton Public Library on Bruce Street hosts a financial planning seminar at 7:30 p.m. Topics include tax planning, investing for the '90s, and retirement planning. Frank Trolio of the Investor's Group is the guest speaker. Register for the free seminar by calling 875-2665. Space is limited.

Thursday Feb. 6

The Women of Halton Action Movement (WHAM) meets at 7:30 p.m. For further information and location, call Linda at 825-3999. Anyone interested is welcome to attend.

The Living with Cancer Group meets at the Milton Branch of the Canadian Cancer Society, 751 Main St. E., from 7:30 to 9 p.m. Group discussions provide emotional support and practical guidance to patients, family, and friends. For more information, call 878-5228 or 878-1876.

The Milton and District University Women's Club meets at Hugh Foster Hall at 7:30 p.m. The topic is community policing. A representative from the Ministry of Solicitor General is the guest speaker. All women university graduates are invited to attend. For more information, call Nova Sparks Austin at 878-6728.

The Bishop Reding Parents Association meets in the Main Street high school's Resource Room at 7:30 p.m. If you have issues, concerns, or are generally interested in your children's education, come and show your support.

Saturday Feb. 8

Milton's day-long Winter Carnival takes place at Memorial Arena on Thompson Road. Most activities are free. Broomball and Snowpitch teams must pre-register. Contact Barb Kwade at the Town's leisure services department at 878-7211, ext. 188.

Tuesday Feb. 11

Learn to speak with confidence before a group with Toastmasters International. The group meets every Tuesday at the Bayrischer-Hof Restaurant on Steeles Avenue. For more information, contact Penny at 878-9247 or 875-4563.

Wednesday Feb. 12

The Arthritis Bluebird Club of Mississauga, a self-help group for people with arthritis and their families, meets in the auditorium at Sheridan Villa, 2460 Truscott Dr., in Mississauga at 7:30 p.m. The guest speaker is health nurse Margaret Saliba. For further information, call 279-4780 or 275-6047.

Thursday Feb. 13

The Victorian Order of Nurses holds a foot care clinic at Milton Community and Information Services in the Optimist Centre from 9 a.m. to 12 noon. The cost is \$15. For further information or an appointment, call 875-4636.

Members of the Rebekah Lodge meet at 8 p.m. Come out and be their Valentine.

The Milton Players Theatre Group presents comedy Cheaters. Tickets are available at the Paper Factory on Main Street East. For more information or reservations, call 878-0629.

Friday Feb. 14

The Milton Senior Citizens' Recreation Centre holds Valentine's Day Lunch from noon to 1:30 p.m. Tick-

ets, available in advance, cost \$4. For more information, call 875-1681.

Friday Feb. 14-15

The Milton Players Theatre Group presents comedy Cheaters. Tickets for the dinner theatre are available at the Paper Factory on Main Street East. For more information or reservations, call 878-0629.

Tuesday Feb. 18

The Alzheimer's Family Support Group meets in the Pettit House at Halton Centennial Manor from 7 to 8 p.m. For more information, contact Yvonne Stupak at 878-4141.

The Victorian Order of Nurses holds a foot care clinic at the Bruce Street apartments, 40 Ontario St.,

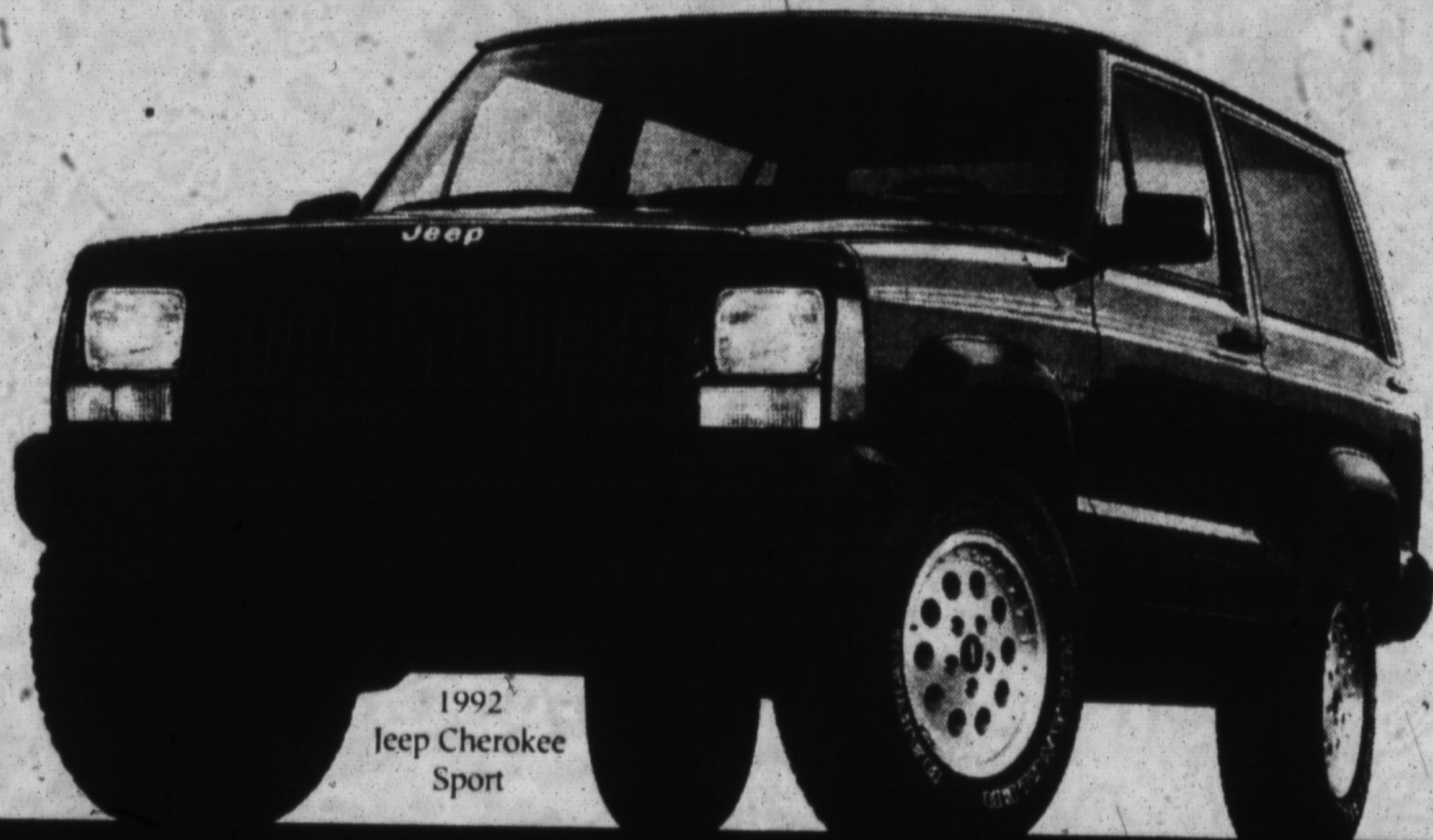
from 1:30 to 4:30 p.m. The cost is \$15. For further information or an appointment, call 827-8800.

Wednesday Feb. 19

The Milton Players Theatre Group presents comedy Cheaters. Tickets are available at the Paper Factory on Main Street East. For more information or reservations, call 878-0629.

Thursday Feb. 20

The Living with Cancer Group meets at the Milton Branch of the Canadian Cancer Society, 751 Main St. E., from 7:30 to 9 p.m. Group discussions provide emotional support and practical guidance to patients, family and friends. For more information, call 878-5228 or 878-1876.



\$16,886*

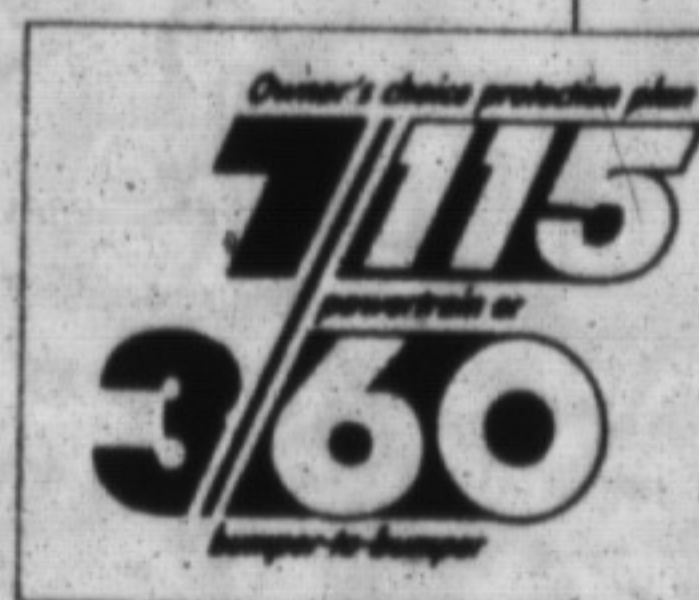
after cash back

A little money buys you a lot of Jeep!

This 1992 Jeep Cherokee Sport comes equipped with:

- 4.0 litre, 190 horsepower engine, the most powerful in it's class
- Shift-on-the-fly four-wheel drive
- Air Conditioning
- AM/FM stereo
- Rear wiper/washer
- Power steering/brakes
- Cast aluminum wheels
- Sport graphics package

Plus take advantage of low rates or generous cash backs[†] on these great models



EAGLE SUMMIT SEDAN	3.9%	48 MONTH FINANCING	OR \$1000 CASH BACK
EAGLE VISTA	3.9%	48 MONTH FINANCING	OR \$1000 CASH BACK
JEEP CHEROKEE	5.9%	48 MONTH FINANCING	OR \$1500 CASH BACK
EAGLE 2000 GTX	7.9%	48 MONTH FINANCING	OR \$750 CASH BACK
EAGLE TALON	7.9%	48 MONTH FINANCING	OR \$500 CASH BACK
JEEP YJ/COMANCHE	7.9%	48 MONTH FINANCING	OR \$500 CASH BACK

Also ask about 3 year Gold Key bumper-to-bumper Lease plans available on Jeep Cherokee and Eagle 2000 GTX

Jeep and Eagle Dealers of Ontario

Milton Jeep/Eagle

81 Ontario Street, Milton, Ontario

878-8877 Sales

878-8808 Service 842-2544 Toronto Line



Advantage:
Jeep & Eagle



Get into Jeep Cherokee, the Original Sport Utility four-by-four

* Freight, licence, taxes, insurance, registration and other fees extra. Dealer may sell for less. † Offers mutually exclusive and for personal use only. Financing for a maximum of 48 months subject to approval by Chrysler Credit Canada Limited. Example: \$10,000.00 financed at 3.9%, 5.9% or 7.9% APR for 48 months respectively. Monthly payments: \$225.34, \$234.39 and \$243.66. Cost of borrowing: \$816.32, \$1,250.72 and \$1,695.68 respectively. With \$500.00, \$750.00, \$1,000.00 and \$1,500.00 rebate not taken, statutory required recalculated C.O.B. expressed in dollars and percent, respectively \$2,195.68, \$2,845.68, \$1,816.32 and \$2,750.72 and 10.58%, 12.02%, 9.32% and 14.49% per annum. In effect from January 20, 1992 until terminated by Chrysler Canada Ltd. Retail lease vehicles eligible for cash only. Applies to existing Dealer inventory only. These offers cancel, replace and may not be combined with any previous offers. See Dealer for details.