

# Campaign needs \$55,000 from the heart

The Milton Chapter of the Heart and Stroke Foundation is aiming to raise \$55,000 to help Halton reach its fundraising target of \$671,000 this month. The goal is four per cent higher than the \$644,160 raised during last year's Heart and Stroke Month campaign in the region.

While donations, as usual, will be collected door-to-door, several area schools are getting involved in fundraising activities as well, said Mary Goodfellow, area co-ordinator for the organization.

Students at Sam Sherratt, Martin Street, Our Lady of Victory, Brookville, Holy Rosary and J.M. Denyes elementary schools as well as Bishop Reding Secondary School have registered to participate in Jump Rope for Heart, a fundraising skipping rope program.

E.C. Drury High School and the Milton Masters will dive for their donations in the similar Swim for Heart program.

Businesses are getting involved as well. The local Heart and Stroke Foundation and the town's sole branch of the Bank of Montreal will beat as one this month.

Donations, both private and corporate, can be made at the Bank of Montreal at Milton Mall throughout February. Receipts will be issued by the bank.

Last year, Miltonians gave \$23,000 door-to-door, while \$10,000 was donated through memorials, and \$22,000 was raised through special events, according to Ms Goodfellow. Across Ontario, the 1992 goal is \$30 million.

Ms Goodfellow said proceeds "directly benefit the community." She also pointed out that \$2.8 million of funds raised in Ontario go to McMaster Medical Centre, the area's best equipped facility for patients with heart problems.



Barbara Mallaieu (centre) and Mary Goodfellow of the Heart and Stroke Foundation along with Mayor Gord Krantz raise the flag to kick off Heart and Stroke Month. The Milton Chapter hopes to raise \$55,000.

Photo by KAREN SMITH

## Boards to start sharing

The Halton Board of Education wants to team up with the Halton Roman Catholic School Board to look for ways to make it through the tough economic times together.

In a Jan. 21 letter to the separate school board's new chairman, Irene McCauley, public school board chairman Dave Coons suggested a meeting take place of a joint-board committee.

"We both have a challenging year ahead of us," Mr. Coons wrote Ms McCauley.

"Obviously our key issue will be this very difficult budget year. The committee would like to meet with you as soon as possible to investigate areas in which the two boards can co-operate to reduce budget expenditures."

At its Jan. 15 meeting, public school trustees volunteered to sit on the committee for the public board. They include Milton trustee Bob Clarke, Burlington trustees Anne Barbu, Don Cassidy, Noel Cooper, Diane Leblovic and Oakville trustee Cheryl Reid.

Education directors Bob Williams (public) and Cliff Byrnes (separate) will arrange the meeting.

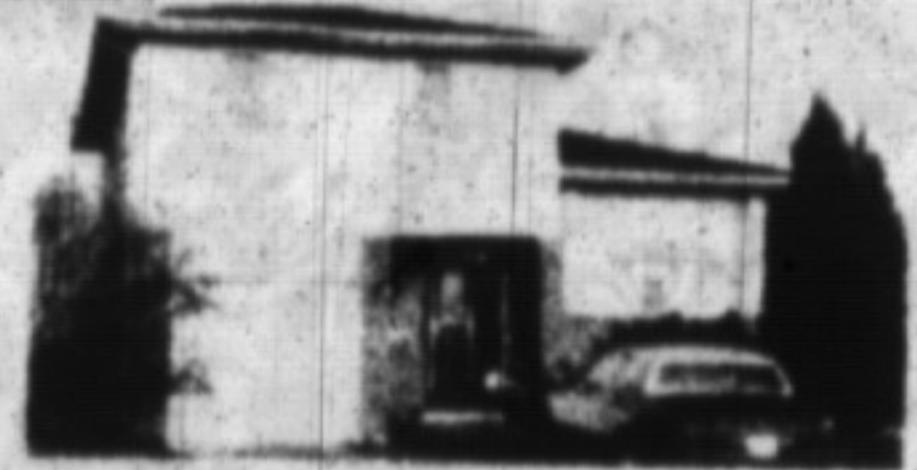
# RE/MAX

## Miltowne Realty Corp.

Sold more homes since 1983  
22 Ontario St. South 878-2365



**PHIL PRESTIDGE**  
878-2365  
878-6924  
Sales Rep.



### A NEW BEGINNING

Is waiting for you in this attractive 3 bedroom sidesplit featuring central vac, air cleaner, inground oval shaped pool, sundeck from family room, etc. Call for your personal viewing.

- I. M2 - 401 frontage - 5000 sq. ft.
- C. 1.25 acres ideal for trucking
- I. 2.9 acre, outside storage, industrial drive site priced to sell. 100% financing available. 3.0 industrial corner lot close to 401 and James Snow Parkway



**NOW ONLY \$124,500.**  
This 3 bdrm., 3 bath is priced to sell. Finished basement, separate dining room, garage. Vendor anxious. Call me to view.

**SMALL BUSINESS**  
Why rent? When you can buy for a small down payment and the same monthly outlay sizes from 1300 - 6800 sq. ft. \$50 per sq. ft.

**INVESTING**  
25.5 acres of prime potential land on Steeles Ave. in Brampton. Call for details.



**JOHN (JP) PEARS**  
Sales Rep.  
Office: 878-2365  
Tor. Line: 826-1030

**DEMAND THE VERY BEST**



**FREDA LAWRENCE**  
Sales Representative  
OFFICE: 878-2365  
TOR. LINE 826-1030  
RES. 878-4860

**LOCATION, LOCATION**

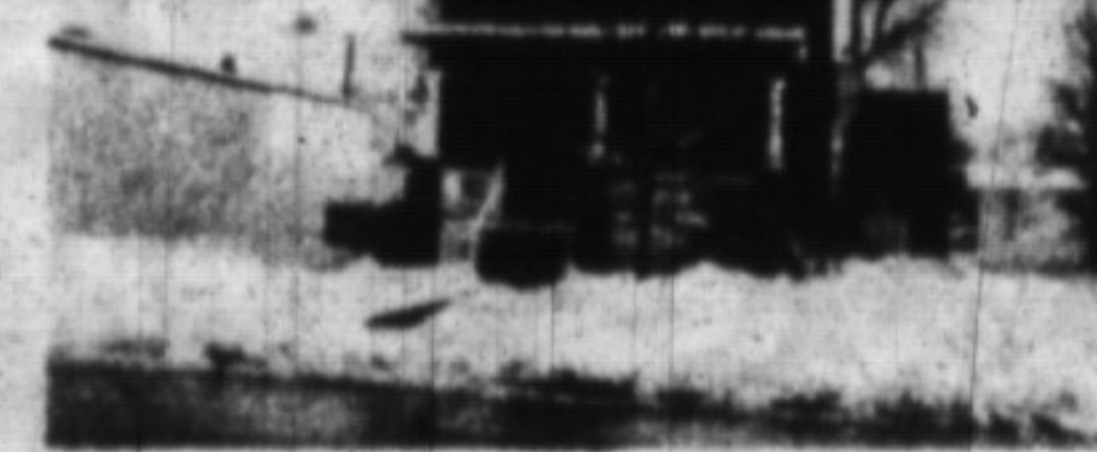
**GOING! GOING!**  
4 bdrm, maintenance free all-brick home, gorgeous 200 x 250 lot, 17 x 28 building, fruit trees, good garden soil, open to offers. Call Freda.

**202 JASPER**  
3 bdrm, brick semi in mature Milton. The vendor has renovated in open concept with extensive use of pine with hardwood floors. Asking only \$149,900.



**PAUL PAGE**  
Associate Broker  
878-2365

**INVESTMENT OPPORTUNITIES**



**POWER OF SALE**  
Residential income properties, commercial zoning. 17 rental units. Gross income \$52,000.00. Good financing available. Priced at \$289,900.



**ALL THE GOODIES**  
Large rooms add to the value of this sizeable 4 bedroom home, newly painted and upgraded broadloom, main floor family room with fireplace. I'll enjoy showing you this one. \$237,900.



**WHAT A FIND**  
Acton beauty, raised bungalow, new paint, very neat, finished basement with walkout & fireplace, 3 bedrooms, nice lot, separate dining room, garage. \$169,900. Want to check it out? Call me.



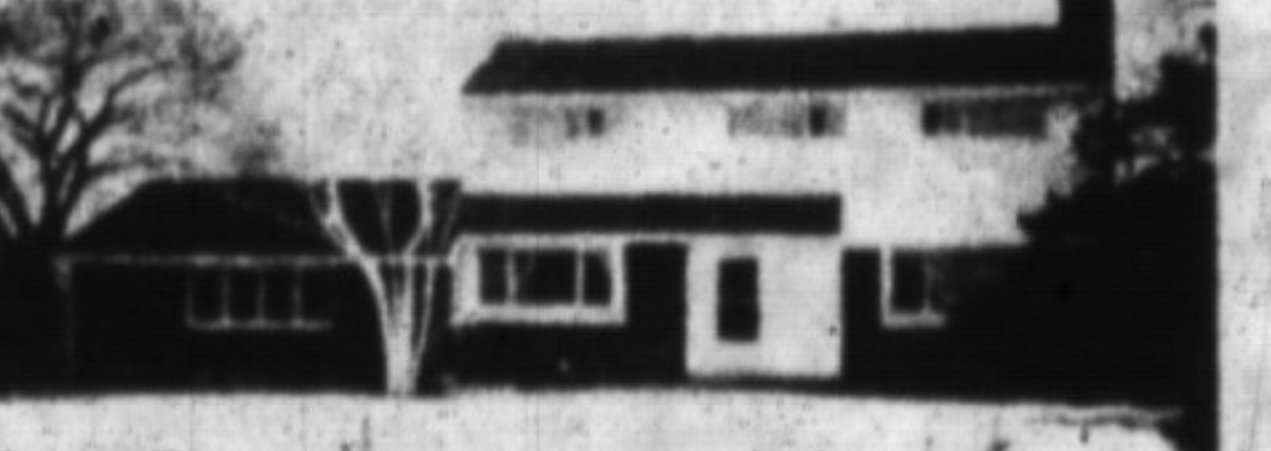
**JP's FEATURE**  
Late 1800's, many upgrades including new windows and recept furnace. 4 bedrooms, games room, family room, large steel work Barn. Combined double car garage, heated and insulated plus barn for storage. \$398,000.



**SHARON KERLEY**  
Sales Representative  
Office: 878-2365  
Toronto Line: 826-1030  
RE/MAX MILTOWNE REALTY CORP.

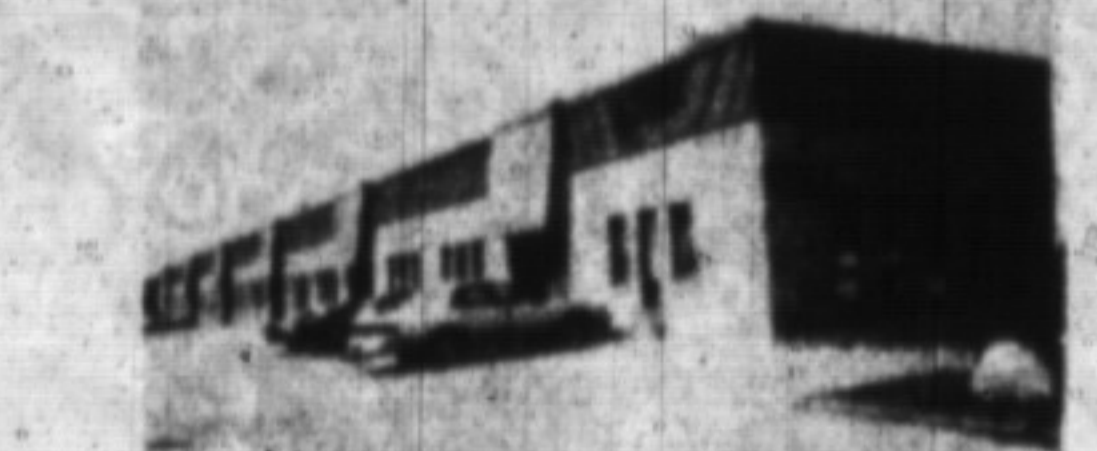


**35 PRIVATE ACRES**  
Just 5 minutes from Campbellville and the 401. This property has it all - pond, stream, forest, orchard, great curb appeal and a beautifully built spacious bungalow. Reduced to only \$399,000. Call Sharon for more details on this one.



**COUNTRY COMMUTER**  
Country home on 2 plus acres backing onto ravine. Spacious living room with fireplace, extra large bright kitchen, 4 bedrooms plus main floor den. Very convenient to either 401 or QEW. \$349,000. Call Sharon for more information.

**WANTED BUYERS WAITING**  
- 4 bedroom home, Timberlea area, nice yard, no pool  
- detached split level, Timberlea or Dorset Park



**INDUSTRIAL**  
24,800 sq. ft. Industrial factory, 3,000 sq. ft. office, loading and drive indoors. Quick access to 401. For Lease \$3.50 sq. ft. (try an offer)



Commercial and residential income property. Solid anchor tenants, prime location. Gross income \$72,000.00. Priced for quick sale \$595,000.00.