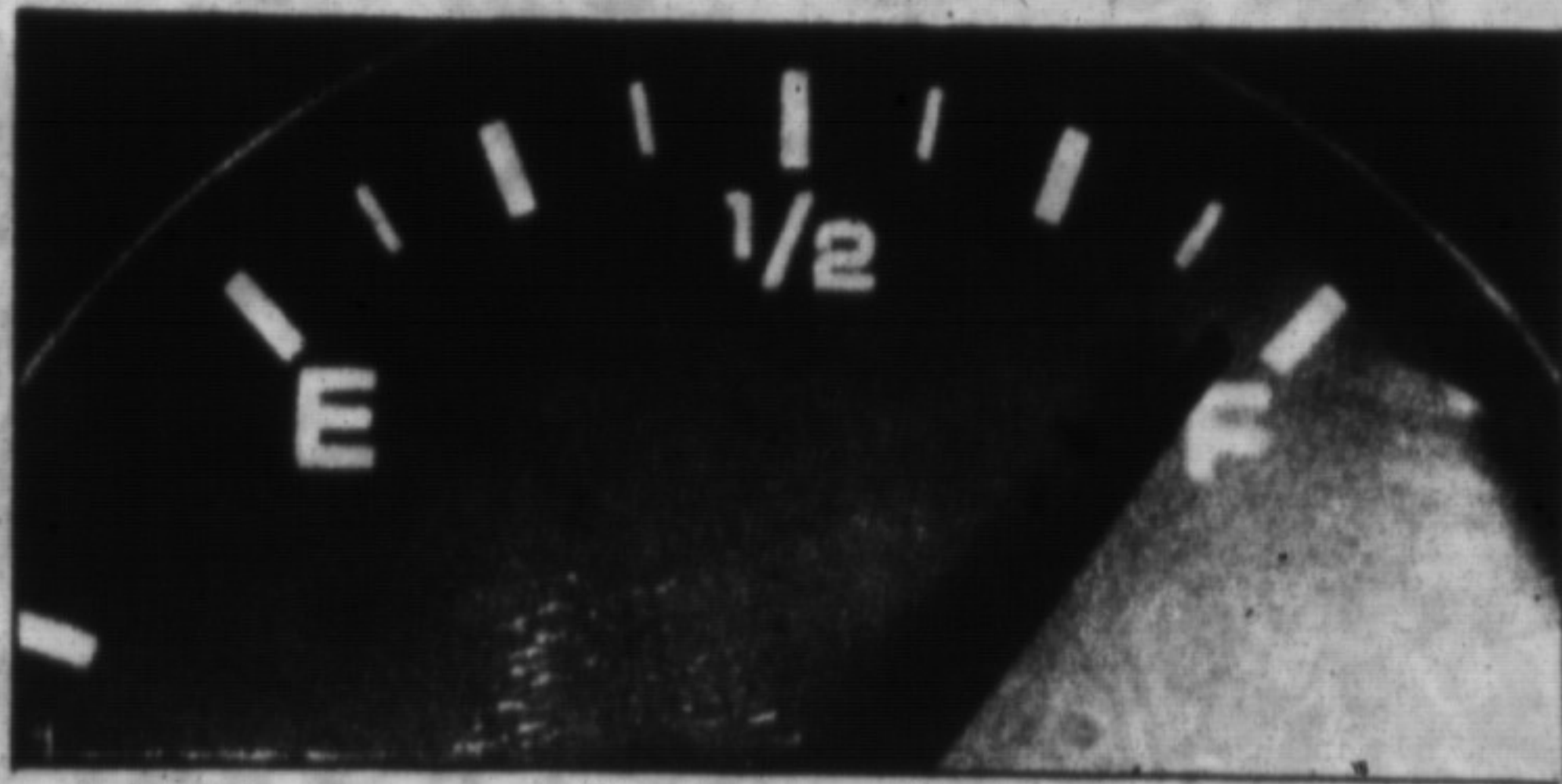
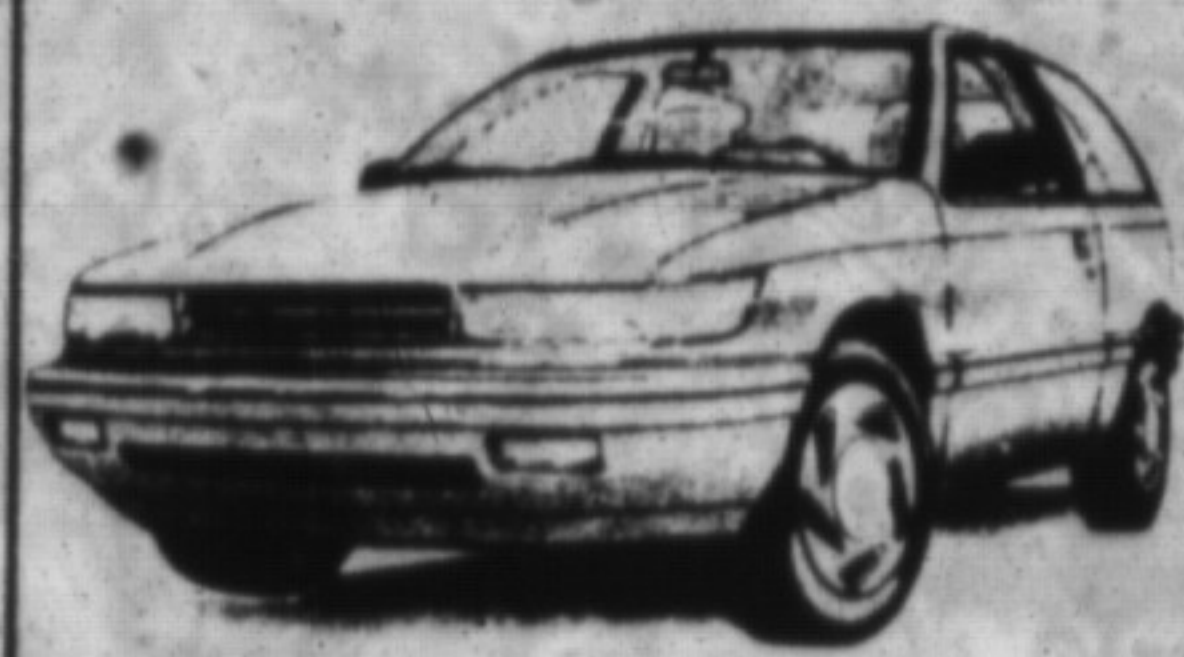


"SAVE MILEAGE IN THE TANK PUT MONEY IN THE BANK"



1992 DODGE COLT 200



47/GALLON (Highway)
36/GALLON (City)

1992 DODGE SHADOW



42/GALLON (Highway)
31/GALLON (City)

FINANCING AS LOW AS

1992 DODGE CARAVAN



35/GALLON (Highway)
26/GALLON (City)

1.7%
OVER
12 MONTHS
OR
UP TO **1000⁰⁰** CASH
TO BACK

1992 EAGLE TALON



38/GALLON (Highway)
26/GALLON (City)

RAM FULL-SIZE PICK-UP & JEEP CHEROKEE \$1500⁰⁰ CASH BACK

MANY MORE CHRYSLER, DODGE & JEEP EAGLE MODELS. QUALIFY FOR ABOVE RATES — SEE DEALER FOR DETAILS

COUNT ON MILTON CHRYSLER!

* All Fuel economy figures based on Transport Canada 1992 Fuel Consumption Guide

GOLD KEY LEASING AND CHRYSLER CREDIT FINANCING OAC

THERE IS ONLY ONE



MILTON CHRYSLER DODGE JEEP EAGLE



"Serving Your Automotive Needs For Over 30 Years"

SALES
878-8877

**81 ONTARIO ST. N.,
MILTON**

SERVICE
878-8808