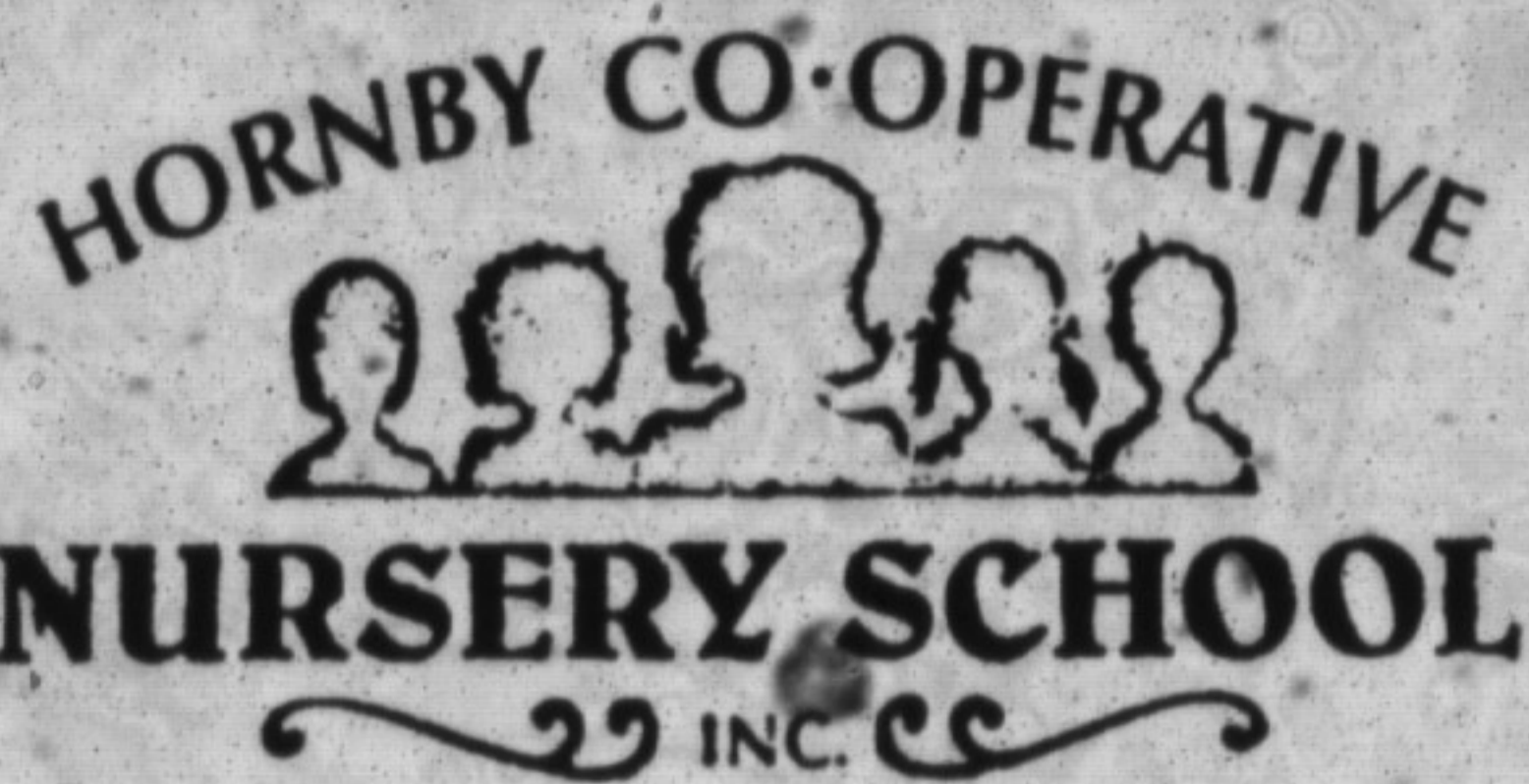


GIVE YOUR CHILD A HEAD START



- Located on Steeles Avenue at Trafalgar Road
- A complete program for two-and-one-half to five year olds, including a large outdoor playground
- Morning Sessions available
- Afternoon Sessions available 5 day, 3 day and 2 day

• For registration information, please call:
Liz Cameron 878-8912 The School 878-5211

R.R.S.P. DEADLINE
Feb. 29

1992

R.R.S.P. Advantages offered by
Bob Lee

- SECURITY OF INVESTMENT
- COMPETITIVE INTEREST RATES
- PERSONALIZED ONGOING CONSULTATION

CONTACT:



Bob "Pie" Lee
Miltowne Insurance Agency Ltd.
878-5786

CALL FOR
NO OBLIGATION CONFIDENTIAL CONSULTATION

Shift from hospital to home care

From FUNDS on page 7
bers make them possible.

A good example is Meals on Wheels, an organization which delivers nutritious prepared meals to people's homes. One member of the audience suggested Meals on Wheels conduct consumer satisfaction surveys.

The government paper recommends that there be no barrier to these services. "Provincial guidelines will specify that those who cannot af-

ford to pay a consumer fee will still be provided with the service," said the report. "The policy on ability to pay will be flexible and non-intrusive."

Other types of services currently available include health and personal support for people who require professional care (including nursing) and homemaking to help them continue to live independently.

New guidelines and increased funding would ensure services be

provided on an expanded and more flexible schedule. "The improved co-ordination, timing, and mix of services that will be available in the home will give consumers and their family caregivers more choices and greater support for their independence," according to the paper.

The redirection of Ontario's long-term care also places greater emphasis on creating community-based alternatives to institutional care, said Ms Elias.

Supportive housing programs for the elderly and disabled are a key element of the new service system. Concentrated 24-hour services would be provided in already existing non-profit buildings and housing settings. "We would have a service agency with a contract right on site," she said.

A local resident at the meeting directed housing concerns to the Milton area. "I'm concerned for the fact that we don't have enough seniors' apartments," she said.

Long-term care facilities (homes for aged, nursing homes) would be an important part of the new service system, but not a growing segment because of expanding services in the community.

The number of long-term care beds in total would not increase for the next several years, according to the report, but distribution of beds across Ontario may change based on need.

By the end of five years, a minimum of \$37.6 million would be re-allocated annually from the total provincial hospital budget to long-term care and support services, it is proposed. The amount is less than 1 per cent of hospital expenditures.

The consultation committee will report to the government with the public's concerns and suggestions for an improved long-term care system by March, said Stan Allen, former administrator of Halton Centennial Manor, and committee member.

Stk#	Yr Model	Colour	Price
246298	90 Shadow	Red	8,995
212201	90 Cherokee Laredo	White	17,995
126496	90 Comanche PK	Grey	11,995
516199	90 Caravan SE	Ice Blue	13,995
516191	90 Caravan SE	Ice Blue	13,995
706125	90 Dynasty	Dark Blue	14,995
069980	90 Talon TSI AWD	Black	19,995
138269	90 Talon TSI	Pewter	15,995
707637	89 Pontiac Tempest	White	8,495
140962	89 Lebaron Conv	White	13,995
589933	89 Cherokee Laredo 4x4	Red	17,995
630648	89 Cherokee Pioneer	White	16,995
272177	89 Voyager SE	Ice Blue	9,995
505451	89 Lebaron Pr.	Bl. Cherry	8,995
630454	89 Shadow	Bl. Cherry	6,995
129801	89 Jeep Islander	Blue	11,995
483531	89 Wagoneer Limited	White	17,995
540460	89 Gr. Caravan	Bl. Cherry	13,900
635449	88 G-Caravan ES	Silver	SOLD 9,995
784233	88 Dakota Spl PK	Red	7,495
297026	88 Plymouth Sundance	Silver	4,995
073768	87 Colt GT	Dk Grey	4,995
135884	87 Daytona Shelby	Red	SOLD 7,595
198022	84 Camaro	Blue	3,995
287433	87 Caravan	Red	6,995

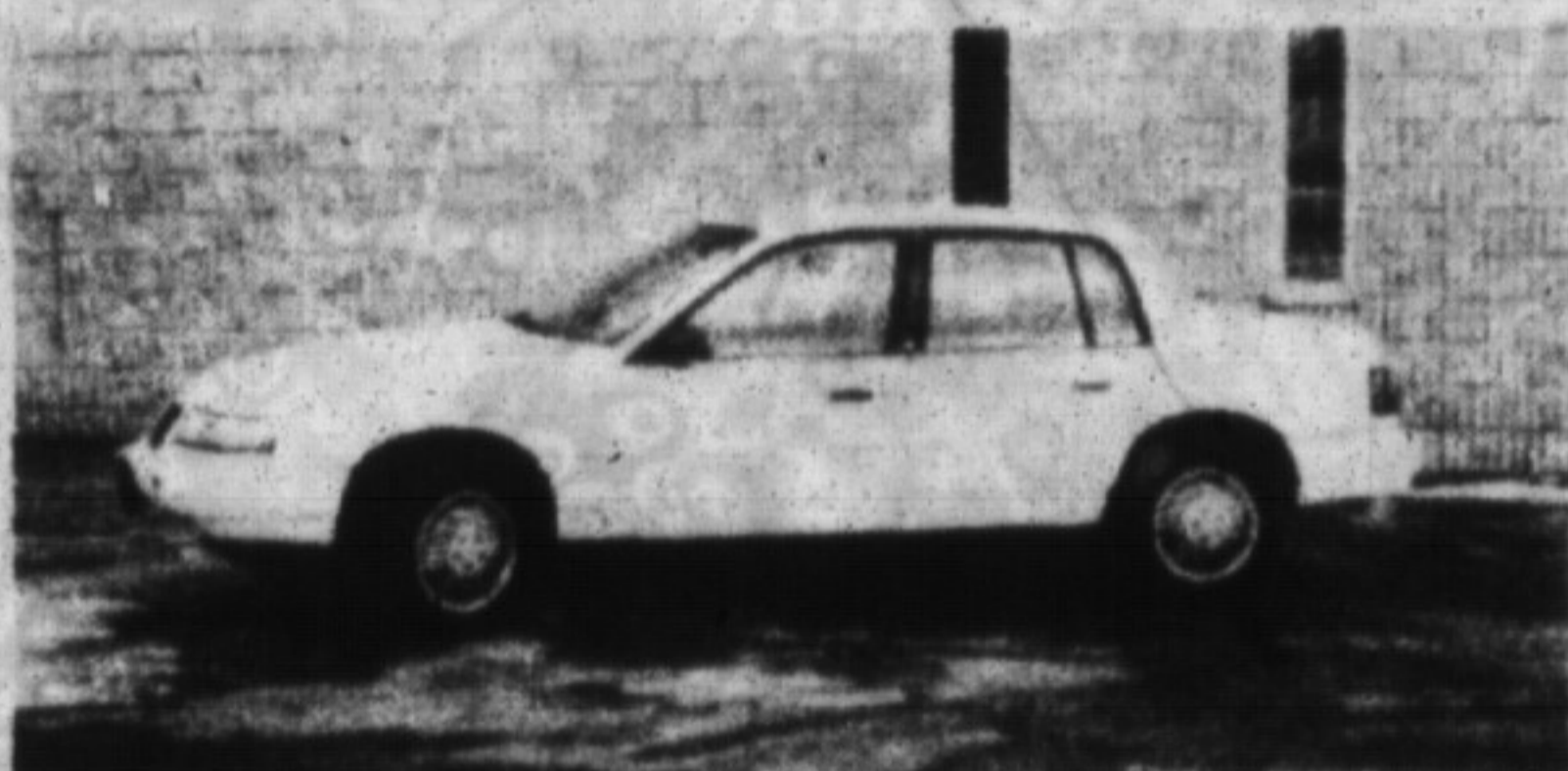
MILTON CHRYSLER-DODGE
JEEP EAGLE

878-8877

COME SEE THE
DODGE BOYS

81 ONTARIO ST.
MILTON

QUALITY USED CAR BARGAINS



1991 GRAND AM LE
Air Cond, AM/FM stereo cassette, Tiltwheel, balance of GM Warranty.
Sale Price \$11,687* Stk P236



1989 PARK AVENUE
Loaded luxury digital dash deluxe interior. Power everything.
Sale Price \$12,995* Stk G305A



1991 FIREFLY
4 door hatchback: AM/FM stereo, auto trans excellent fuel mileage.
Sale Price \$7,195* Stk# PL34



1991 HONDA ACCORD EXR WAGON
Power sunroof power windows and locks, absolutely loaded and mint condition.
Sale Price \$19,887* Stk# 1365A



1991 CAVALIER
4 door air cond., auto trans, AM/FM, stereo cassette, balance of GM warranty mint cond.
Sale Price \$10,476* Stk# P237



1988 GRAND MARQUIS
1 owner loaded power windows and locks. Nice car.
Sale Price \$7,995* Stk# P1355A

AS IS SPECIAL



1986 CHEV S-10 EXTENDED CAB PICK-UP
Air cond., cap, good utility vehicle.
Sale \$4,995* STK#9124A

* Tax & Licence Extra

Murray Wilson

PONTIAC BUICK CADILLAC LTD.

A NAME THAT MEANS A GREAT DEAL

409 MAIN STREET EAST, MILTON 878-2355