

# Post office buys pricey box seats for managers

Did you send out a Christmas card this year or pay a bill by mail?

If you used the postal system at all, you're one of the millions of Canadians who helped pay for an assortment of private boxes and expen-

sive seats at major sporting arenas, all enjoyed by the management team of Canada Post.

Read no further if abuse of power and lavish spending leave you feeling ill. The details of this debacle, though not yet completely known, are thus far contemptible.

A spokesperson for postal management has been quoted saying Canada Post has undertaken a one-

year lease of a box at Toronto's Sky-Dome from Cineplex Odeon Corp. for less than \$200,000 (earlier reports

had the figure closer to \$1 million).

The same spokesperson was reported as saying that Canada Post rents seats for games in Winnipeg and Calgary. Another spokesperson for the Montreal Canadiens was reported to have said it's possible the post office leases a box at The (Montreal) Forum, where the rates are between \$30,000 and \$100,000 a year, and may have booked space at

Montreal's future rink, which will have boxes for lease at between \$50,000 and \$125,000 a year.

Apparently Canada Post has some Toronto Maple Leaf fans, since there are also reports the Crown corporation may have rented a private box for specific hockey games at nightly rates of \$1,750 to \$2,500. Add to these reports of postal management

see DO STAMPS on page 10

**Mainstream  
Canada**  
with MICHAEL WYCKS

## CHIMNEY'S

Wm.

**TOWNSHEND & FAMILY**  
FAMILY PROFESSION SINCE 1925

### "GAS LINERS"

- Bungalow 170<sup>00</sup>
- Two-storey 210<sup>00</sup>
- Stainless steel 350<sup>00</sup>
- Two-storey 500<sup>00</sup>

### "STAINLESS STEEL INSULATED CHIMNEYS"

- Bungalow 700<sup>00</sup>
- Two-storey 1,000<sup>00</sup>

### ALL FIREPLACE REPAIRS

**875-7834**

REGISTERED WITH ONTARIO GOVERNMENT FUEL SAFETY BRANCH

## OPEN HOUSE LISTINGS THIS WEEKEND

SATURDAY 2-4 P.M.

699 Middleton Cr.  
\$159,900.  
Eva Gooding in attendance  
ROYAL LEPAGE REAL ESTATE LTD.  
878-8101

SATURDAY 2-4 P.M.

741 Woodward #19  
\$136,900.  
Barb Lafleche in attendance  
ROYAL LEPAGE REAL ESTATE LTD.  
878-8101

SATURDAY 2-4 P.M.

633 Beaver Court  
\$164,000.  
Virginia Brazeau in attendance  
ROYAL LEPAGE REAL ESTATE LTD.  
878-8101

SATURDAY 2-4 P.M.

318 Laurier Ave. #14  
\$135,900.  
Sandi Kinsale in attendance  
ROYAL LEPAGE REAL ESTATE LTD.  
878-8101

SUNDAY 2-4 P.M.

711 Middleton Cres.  
\$167,500.  
Barb Lafleche in attendance  
ROYAL LEPAGE REAL ESTATE LTD.  
878-8101

SUNDAY 2-4 P.M.

819 Childs Drive  
\$244,900.  
Barbara Ramsden in attendance  
ROYAL LEPAGE REAL ESTATE LTD.  
878-8101

SUNDAY 2-4 P.M.

1389 Progression Rd., Carlisle  
\$595,000.  
Carole D. Budworth in attendance  
ROYAL LEPAGE REAL ESTATE LTD.  
878-8101

SUNDAY 2-4 P.M.

1315 Britannia Rd.  
(Just east of 4th Line)  
\$489,000.  
Virginia Brazeau in attendance  
ROYAL LEPAGE REAL ESTATE LTD.  
878-8101

SUNDAY 2-4 P.M.

159 Robinwood Cr.  
\$185,000.  
Sandi Kinsale in attendance  
ROYAL LEPAGE REAL ESTATE LTD.  
878-8101

SUNDAY 2-4 P.M.

341 Wilson Dr. #40  
\$136,900.  
Joyce Hagevik in attendance  
ROYAL LEPAGE REAL ESTATE LTD.  
878-8101

SUNDAY 1-4 P.M.

235 Bronie St. #33  
\$134,800.  
Gladys Cranford in attendance  
REALTY WORLD - W. J. McCRUDDEN R.E.  
876-1133

SUNDAY 1-4 P.M.

230 Coxe Blvd.  
\$274,900.  
Cameron Gall in attendance  
CHRISTIE & WOODS R.E.  
878-2095

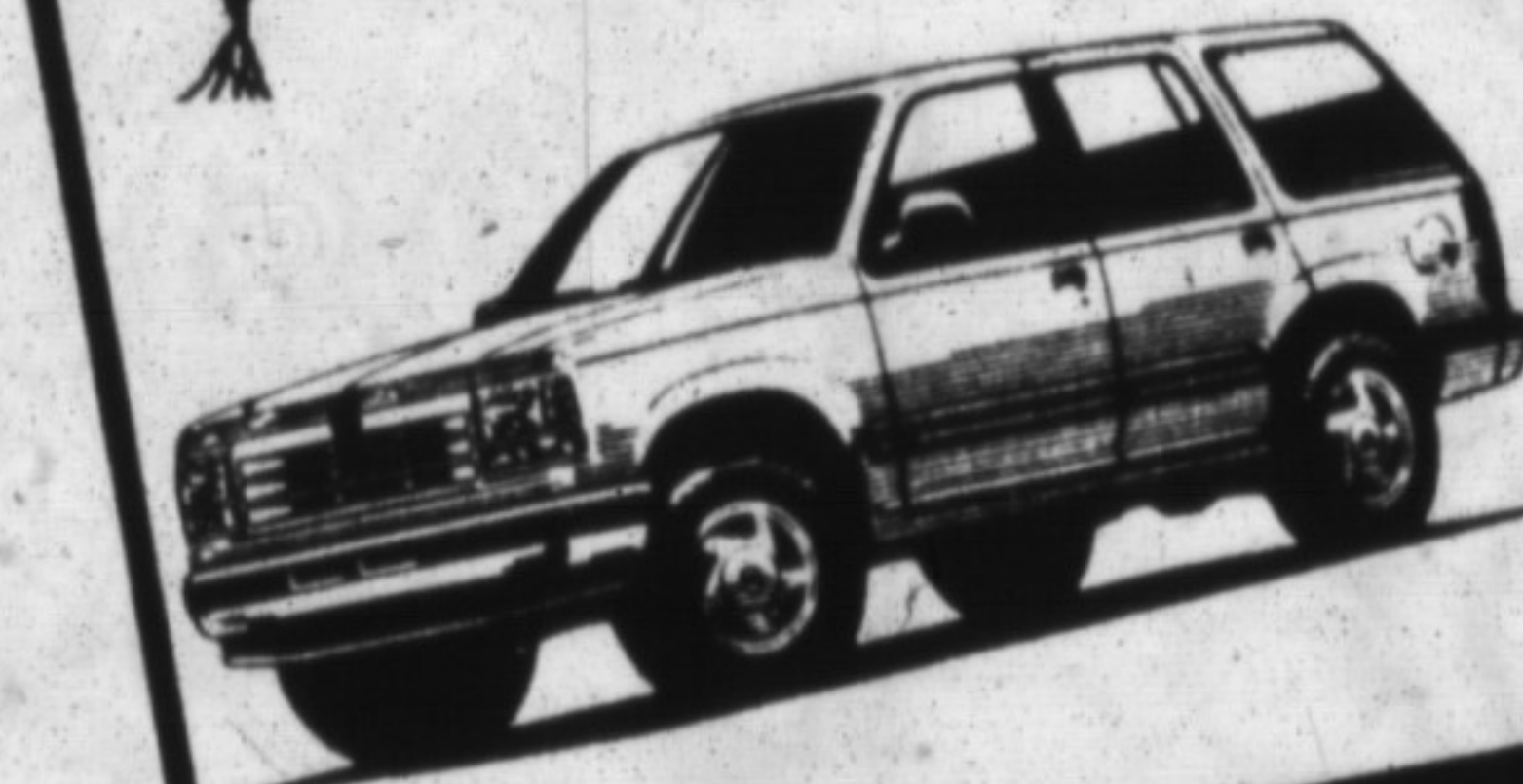
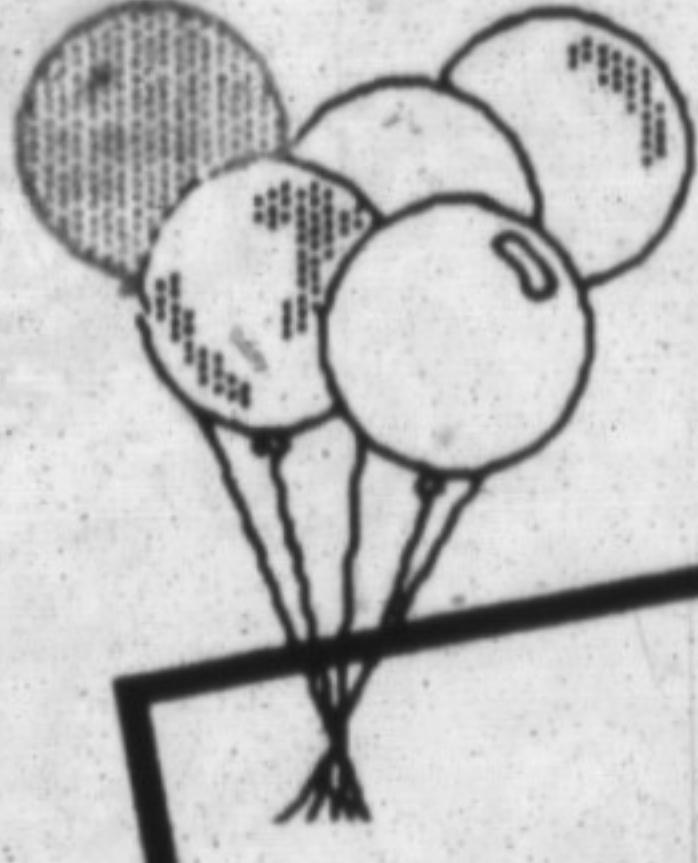
SUNDAY 11:30-3 P.M.

81 Millside Dr., 11th floor  
\$147,500.  
Tin Nevins in attendance  
CHRISTIE & WOODS R.E.  
878-2096

SUNDAY 1:30-4 P.M.

98 Maiden Lane  
\$168,900.  
Richard Hierman in attendance  
RE/MAX MILTOWNE REALTY  
878-2365

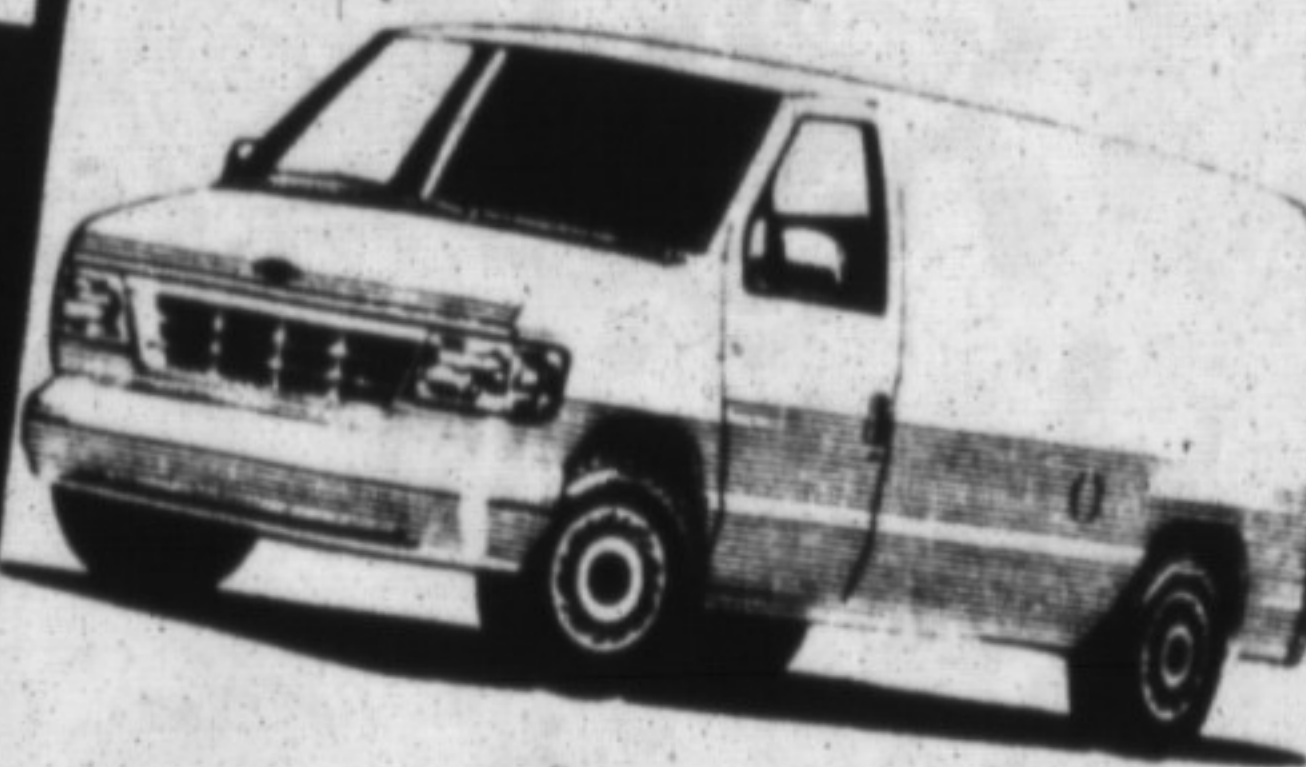
# HAPPY NEW DEALS



### NEW! 1992 EXPLORER

4 door, 4 x 4, V6, automatic with overdrive, XL trim, air cond., rear window wiper, AM/FM stereo cassette, luggage rack, privacy glass, body side moulding, cloth captain's chairs. Silver clear coat metallic, grey cloth interior. Stock # 2716.

**\$22,495**

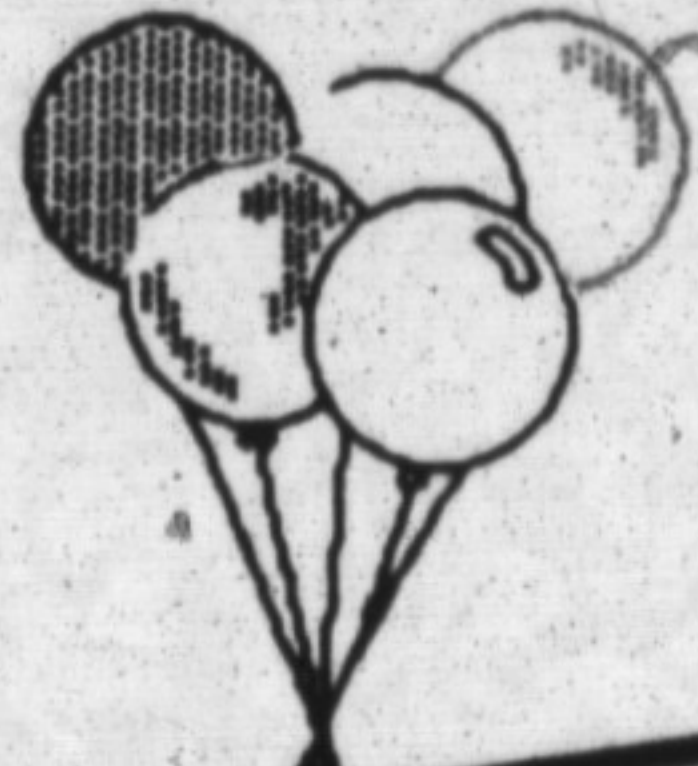


### NEW!

### 1992 E150

8 cylinder, automatic with overdrive, rear door glass, AM radio with clock, 6,500 lb. G.V.W., sliding side cargo door, high back bucket seats. Silver clear coat metallic, charcoal interior. Stock # 2790.

**\$16,995**



### NEW! 1992 E150 CLUB WAGON

351 V8, Auto with overdrive, Chateau package, towing package, air cond., quad captain chairs, power windows, power door locks, AM/FM stereo cassette, speed control, tilt steering wheel, power driver's seat, forged aluminum wheels, 2 tone paint, power windows, privacy glass, anti-theft alarm, Twilight blue with medium platinum accent, blue cloth interior. Stock # 2851.

**\$25,995**

\* Prices plus freight (Explorer \$480, E150 + Club \$680) all applicable taxes and licence. Prices expire Jan. 31, 1992.

## MILTON'S LARGEST FORD DEALER!

# GALLINGER

MOTORS LIMITED

655 MAIN ST. MILTON 875-3673

FORD  
LINCOLN  
MERCURY