

RE/MAX

Miltowne Realty Corp.

Sold more homes since 1983
22 Ontario St. South 878-2365

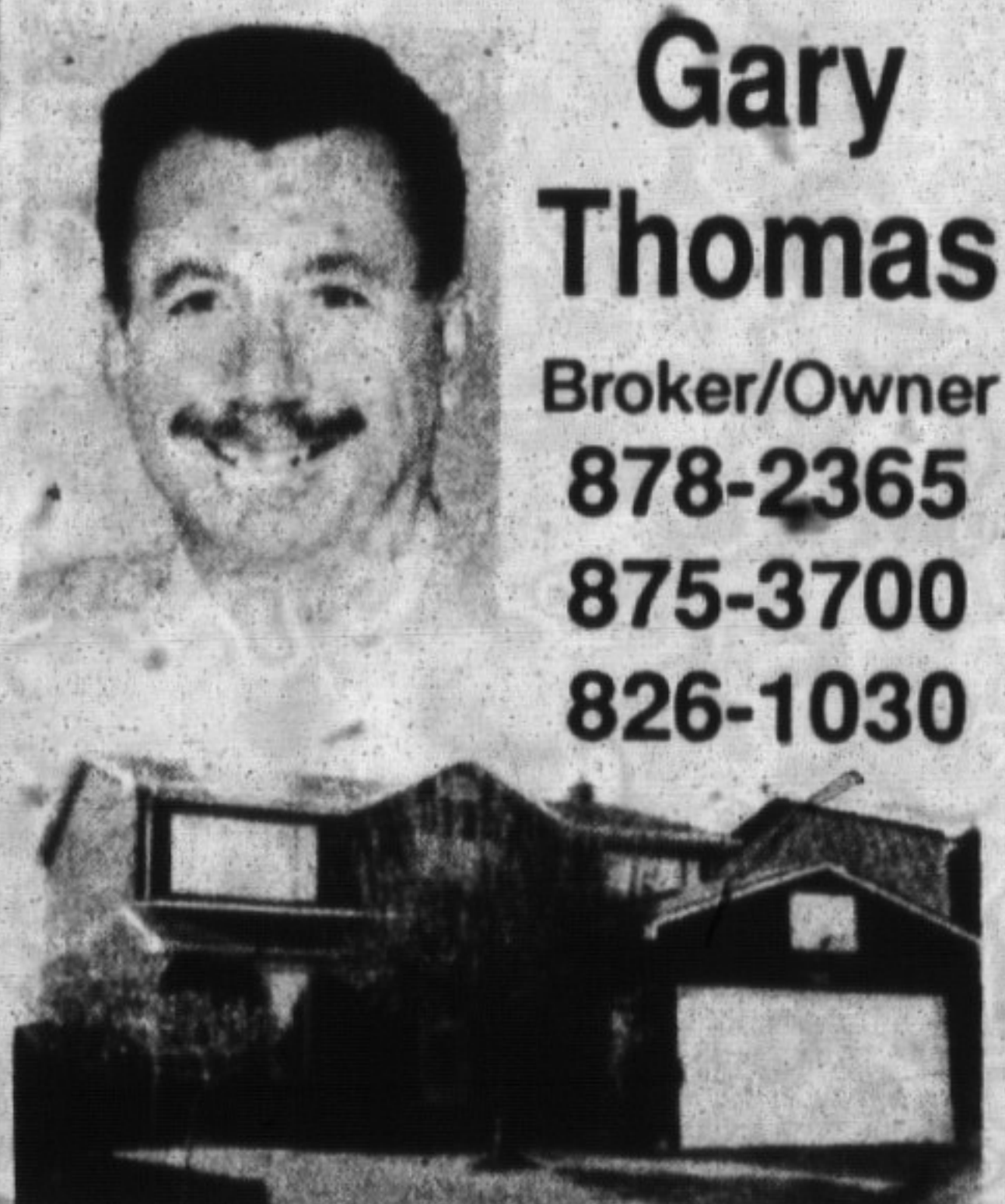
RE/MAX - The Canadian Champion, Wednesday, January 8.

GARY THOMAS

Broker/Owner

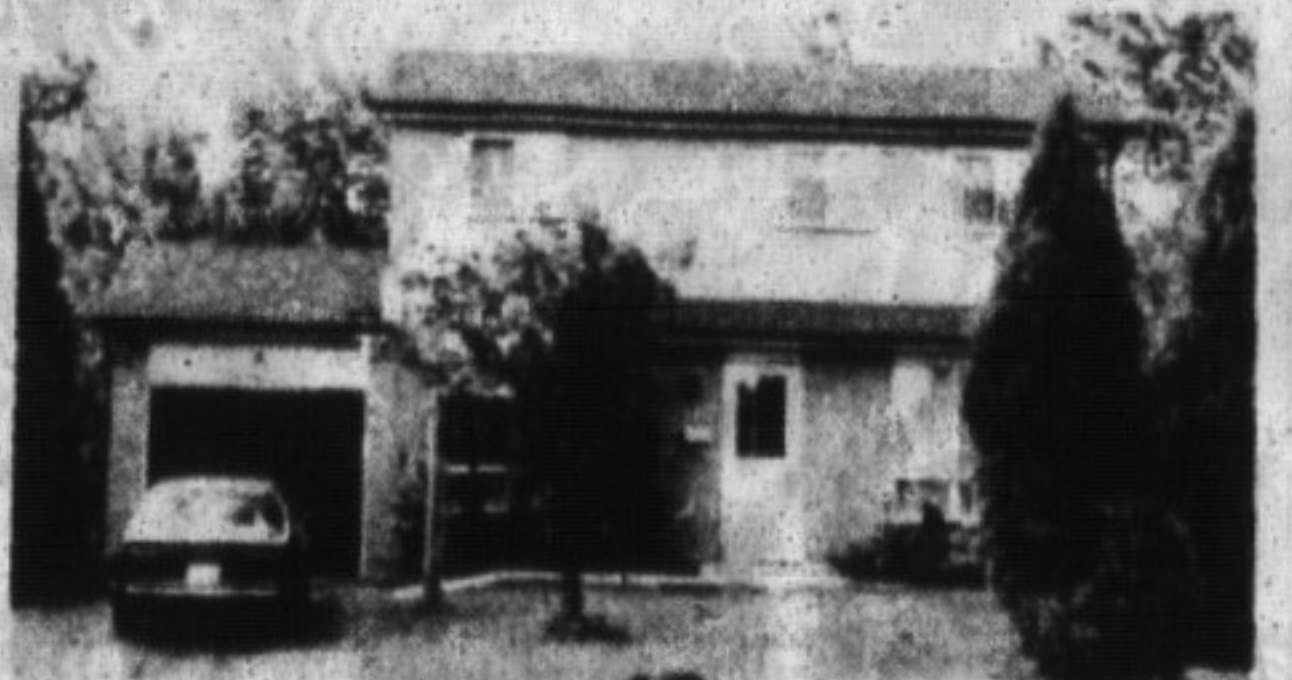
Alan Brooks 875-0067
Gail Pullen 878-0110
Freda Lawrence 878-4860
Maurice Miljour 876-4577
Audrey Newell 878-5339
Wayne Warner 878-1084
Lina Warner 878-1084
Ron Furik 878-3337
Phil Prestidge 878-6924
Richard Hierman 878-5806
Carol M. Brooks 875-0067
Lindsay McLaren 854-2451
Katrina Walton 878-1588

Jean Snowden 878-3155
Mike Morgan 878-8093
Paul Page 878-2995
Anne Taylor 854-9833
Betty Ingle 827-4286
Ron MacNeil 878-0198
Clayton Hackenbrook 875-0771
Sharon Kerley 854-0474
John (J.P.) Pears 878-6859
Joan E. Tattrie 876-1575
Scott B. Prior 878-2365
Marilyn Andrews 878-2365
Al Volpe 827-9025



Gary Thomas
Broker/Owner
878-2365
875-3700
826-1030

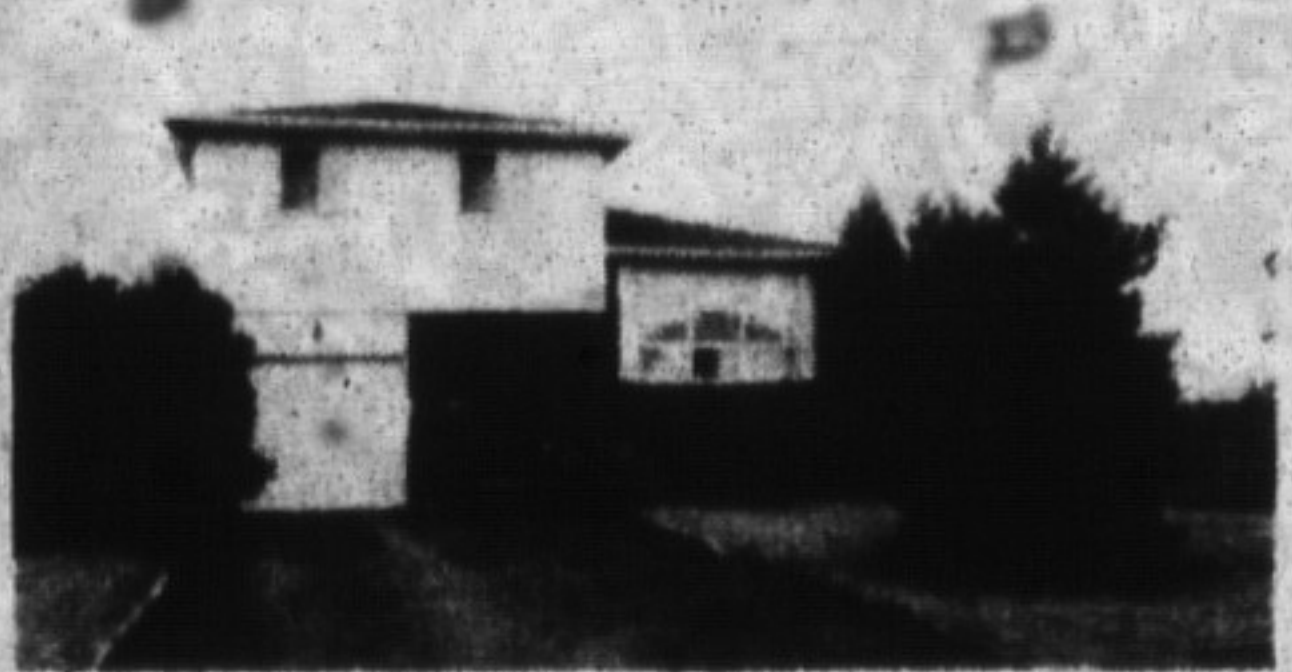
YOU MUST CALL ABOUT THIS ONE
Beautiful four-bedroom, 2-storey detached home in Timberlea featuring 3 baths, main-floor laundry room, family room, glass sliders to deck overlooking 16 x 32 inground pool. Great family home close to schools and shopping. Call Gary for your personal inspection. \$249,500.



LOOKING FOR GOOD VALUE?
Then try this 4-bedroom, 2-storey home on quiet cul-de-sac. Glass sliders to huge backyard and has a finished rec. room. Central air and cedar deck are also features of this fine home. Call Gary to view. List Price, \$178,900.



SPECIAL ATTRACTION
Beautiful raised ranch bungalow on approx. 4 acres complete with 5 bedrooms, Florida room overlooking large pond with small island, Hollywood-style kitchen with oak cupboards & Florida ceiling. Many walkouts, satellite dish, central vac. & equipment, all window coverings, professional landscaping. Two-bedroom apt., ideal for nanny or in-laws. Call Gary for your personal inspection. \$399,900.



CHARM PACKED
Lovely 3-bedroom sidesplit situated in Bronte Meadows and featuring oval-shaped inground pool, sun deck off family room and professionally landscaped property. Call Gary for your personal inspection, \$204,500

FREDA LAWRENCE
Sales Representative
OFFICE
878-2365
TOR. LINE 826-1030
RES. 878-4860



GOING! GOING!
4 bdrm, maintenance free all brick home, gorgeous 200 x 250 lot, 17 x 28 building, fruit trees, good garden soil, open to offers. Call Freda.



202 JASPER
3 bdrm. brick semi in mature Milton. The vendor has renovated in open concept with extensive use of pine with hardwood floors. Asking only \$149,900

Gail Pullen
Sales Rep
878-2365 Office
878-0110 Res
826-1030 Tor. Line



FIRST TIME OFFER
\$159,500
This lovely little starter home sits on an oversized mature lot and even has a bedroom, kitchen, living room and bathroom on the lower level. Call today for a private viewing.



NEW BUSINESS
Industrial condos on Main Street in Milton from 1300 sq. ft. to 6,800 sq. ft. \$50 per sq. foot. With 25% less than \$500 a month for the small unit.

REDUCED
Discover in this 3-bedroom, 3-bathroom townhome: Private yard, finished basement, separate dining and living rooms. Call me B4 sunset. \$129,900.

This beautifully finished raised ranch is situated on over 11 acres, pond, satellite dish, double heated garage. Quick closing available. Asking \$289,900. Try an offer.

JOHN (JP) PEARS
Sales Rep
Office: 878-2365
Tor. Line: 826-1030

JP's FEATURE
25 acres, heavily treed with a 3500 sq. ft., 1-1/2 storey home, 5 bedrooms, solid oak kitchen, built-in appliances, large separate garage, Separate office/guest building. Reduced to \$690,000.

BETTY INGLE
Sales Rep
878-2365
Res. 827-4286

WELCOME IN THE NEW YEAR
In this value-packed 3-bedroom backsplit located in Dorset Park. Finished basement, rec. room, en suites, inground pool, and much more. See for yourself. Reduced to \$179,900.

PHIL PRESTIDGE
878-2365
878-6924

M-2 401 FRONTAGE
5,000 sq. ft. building. 1.25 acres. Ideal for trucking or heavy equipment.
3.0 acres light industrial corner lot.

OO Whether looking for large or small industrial or commercial, Look to Phil Prestidge 878-7777