

Century 21
GOLDEN REAL ESTATE LIMITED

*Season's Greetings
to all my friends and
clients. Thank you and
best wishes for the
holidays and a happy,
healthy,
prosperous
New Year.*



James D. Snow
CENTURION®
Sales Associate

James

ROYAL LEPAGE



EVA GOODING
Sales Rep

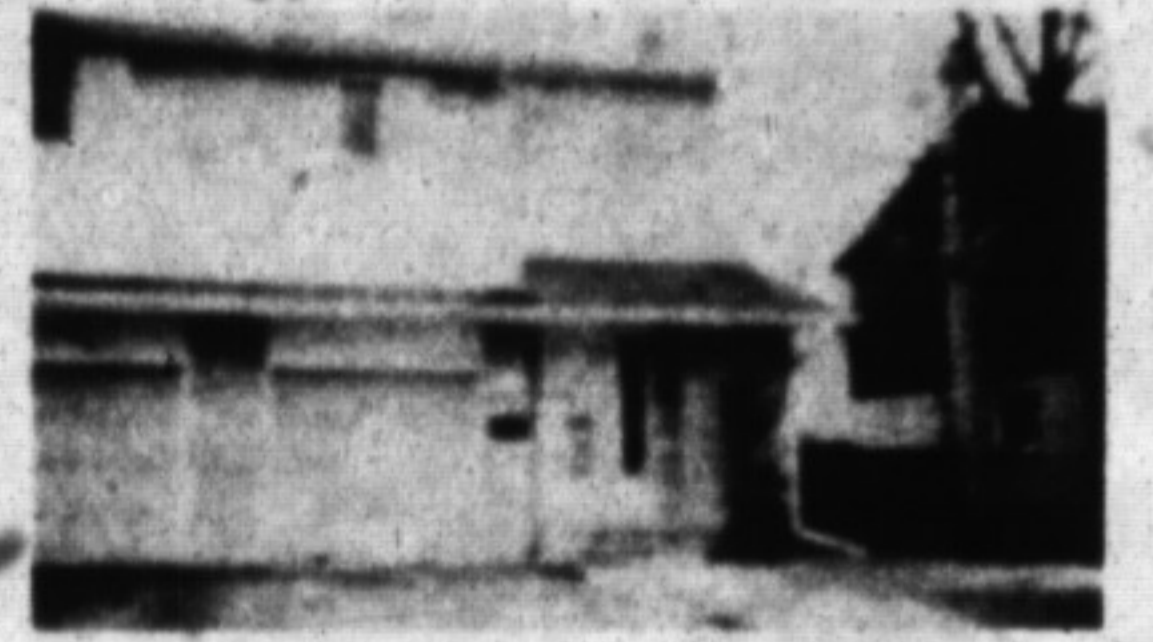
Royal LePage Real Estate Services Ltd. is pleased to announce the appointment of Mrs. Eva Gooding to our sales staff. Eva has enjoyed a very successful career in real estate and is well respected by her clients and associates. We are confident that Eva will continue to excel in this industry especially with the unlimited resources and programs offered by Royal LePage. To reach Eva, please call:

878-8101
or
875-4009



Gail Pullen
Sales Rep
878-2365 Office
878-0110 Res.
826-1030 Tor. Line

**NEW LISTING
\$155,900.**



3 bedroom semi with garage, long driveway. Extra large bedrooms plus 1-1/2 baths. Vendor has purchased.

Call

GAIL PULLEN
878-0110

Re/Max Milltowne Realty Corp.

*Best wishes
for the
Christmas
Season, from
ours homes, to
yours!*



JOYCE SCOTT REAL ESTATE INC. JSR

TOWN OR COUNTRY?

JOYCE BLVD.
Available immediately. Excellent neighbourhood. Lovely 3-4 bedroom home.

BEAUTIFUL RURAL SETTING -
Multi parking on town water, \$199,900. Close to Escarpment.

COMMERCIAL PROPERTY WITH HOME
Available May 24. 24 months. \$1,200,000.

details? please call
JOYCE SCOTT
BROKER-OWNER
878-1526

Member of Multiple Listing Services
12 years of integrity and satisfaction.

Freeman COMMERCIAL



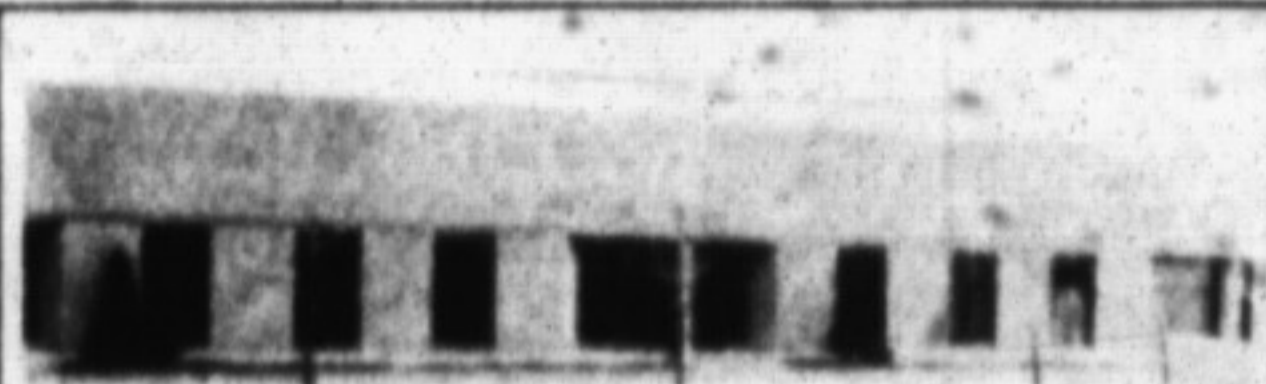
A Freeman Real Estate Company Inc. Broker

842-8690 (res.) 878-4380

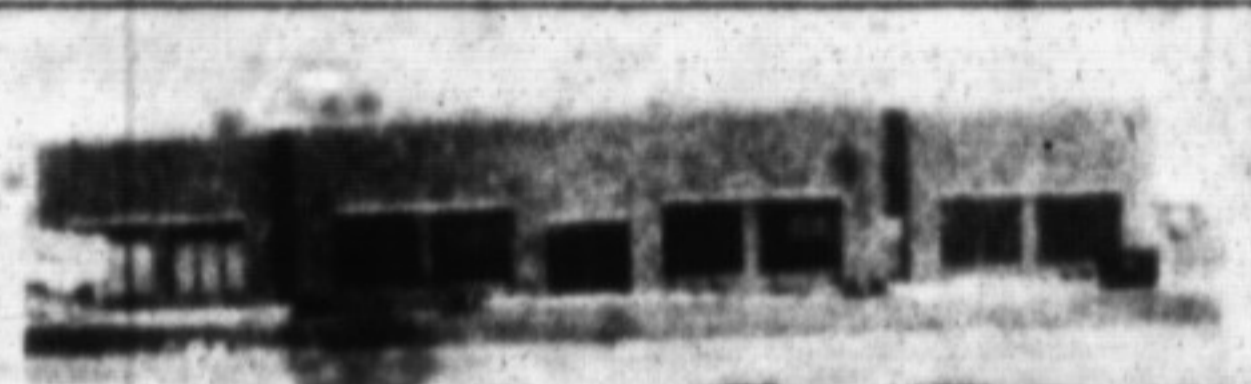
Marilyn Andrews
Sales Representative

**INDUSTRIAL COMMERCIAL INVESTMENTS
SPECIALISTS**

INDUSTRIAL BUILDINGS FOR SALE

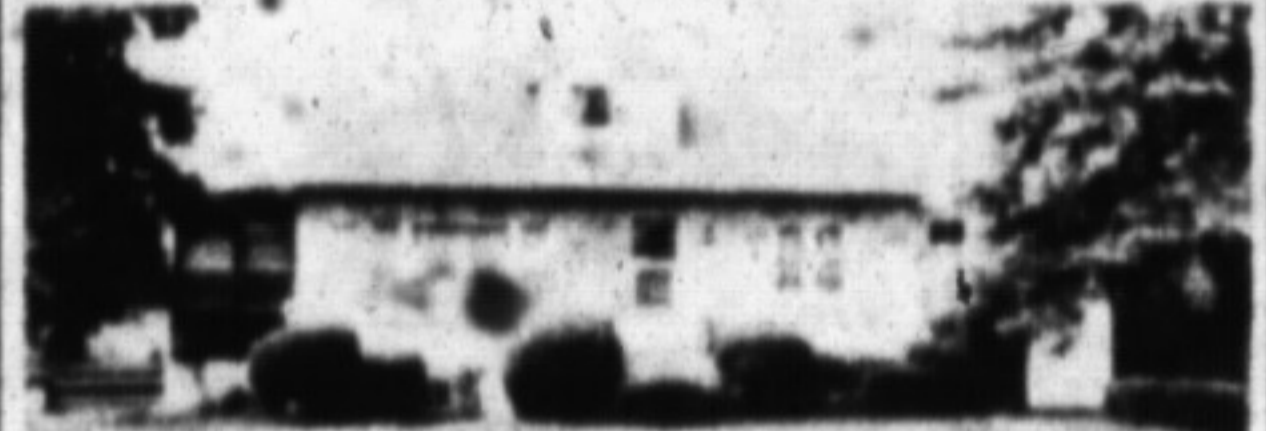


30,756 sq. ft., 21' clear, 6 D.L., 1D.I., excellent truck access. Brick/block construction. Priced to sell \$1,250,000.00!!



Newly constructed brick building, 18,470 sq. ft., 18' clear, partially leased, user/investor opportunity. Asking \$990,000.00.

COMMERCIAL FOR SALE



24 BRONTE STREET
50 X 100 ft. lot with brick home. Great location at Bronte/Main for professional office. Asking \$275,000.

**LEASING - LEASING
- LEASING**

150 car capacity outside storage compound with office space in free standing building. Near Auto Auction.

1600 sq. ft., Steeles Ave./Bronte St., Asking \$5.50 Gross Rent

2800 sq. ft. Steeles Ave., 10% office, Asking \$5.25 Gross Rent

1400-2800 sq. ft. Thompson/Main, Asking \$7.00 Net

10,000 sq. ft., 2 D/I., Finish to suit. Asking \$5.00 Net

15,000 sq. ft., excellent truck access, 2 D.L. doors. Asking \$4.00 Net

2500 - 7000 sq. ft., new building, Industrial Drive. Asking \$5.00 Net

WE CAN FIND THE SPACE YOU NEED AT A GOOD PRICE



BUSINESS AND RESIDENCE - ONE ADDRESS
Very attractive 1800-sq ft brick bungalow plus NEW 6000 sq ft industrial bldg on 77 acre M2A. Minutes to James Snow/401. Reduced to \$795,000.

3.3 acre rural industrial site includes 4800 sq. ft plus industrial buildings plus 5 bedroom, 2100 sq. ft. brick bungalow. Prime location close to 401 and Winston Churchill. Asking \$950,000.

Prime 2 acre parcel within Milton's planned industrial park. Steel barn plus brick bungalow. Asking \$600,000. Capitalize on this investment site.

EURLONG COLLINS GUNDING

BARRISTERS & SOLICITORS

Ask us if you
need a lawyer

878-8123

Ask us if you
need a lawyer

BANKS	VARIABLE RATE	6 MONTHS	1 YEAR	2 YEARS	3 YEARS	4 YEARS	5 YEARS
Can. Imperial	13.5%	13%	13%	12%	12%	12%	12%
Bank of Montreal	13.5%	13%	13%	12%	12%	12%	12%
Laurentian Bank	13.5%	13%	13%	12%	12%	12%	12%
National Bank	13.5%	13%	13%	12%	12%	12%	12%
Bank of N.S.	13.5%	13%	13%	12%	12%	12%	12%
Royal Bank	13.5%	13%	13%	12%	12%	12%	12%
Toronto Dominion	13.5%	13%	13%	12%	12%	12%	12%
TRUST COMPANIES							
Can. Trust	13.5%	13%	13%	12%	12%	12%	12%
Canada Trust	13.5%	13%	13%	12%	12%	12%	12%
Central Guaranty Trust	13.5%	13%	13%	12%	12%	12%	12%
Co-operative Trust	13.5%	13%	13%	12%	12%	12%	12%
General Trust	13.5%	13%	13%	12%	12%	12%	12%
Guardian Trust	13.5%	13%	13%	12%	12%	12%	12%
Household Trust	13.5%	13%	13%	12%	12%	12%	12%
Montreal Trust	13.5%	13%	13%	12%	12%	12%	12%
National Trust	13.5%	13%	13%	12%	12%	12%	12%
Premier Trust	13.5%	13%	13%	12%	12%	12%	12%
Preror Trust	13.5%	13%	13%	12%	12%	12%	12%
Royal Trust	13.5%	13%	13%	12%	12%	12%	12%
Standard Trust	13.5%	13%	13%	12%	12%	12%	12%
Cuba Credit Union	13.5%	13%	13%	12%	12%	12%	12%
Jet Power Credit Union	13.5%	13%	13%	R.O.R.	R.O.R.	R.O.R.	R.O.R.

NOTES: ** Interest rate charged subject to adjustment during term of mortgage. Please consult institutions for term of years available.
R.O.R. Rates on request R/O Foreign only
op. Open N/A Not applicable
Not quoting

RATES TAKEN
DECEMBER 7, 1990

*Fiduciary agents specialize in trust and loan investments, and also supplies free consumer information on these investments. Phone 844-7700.