

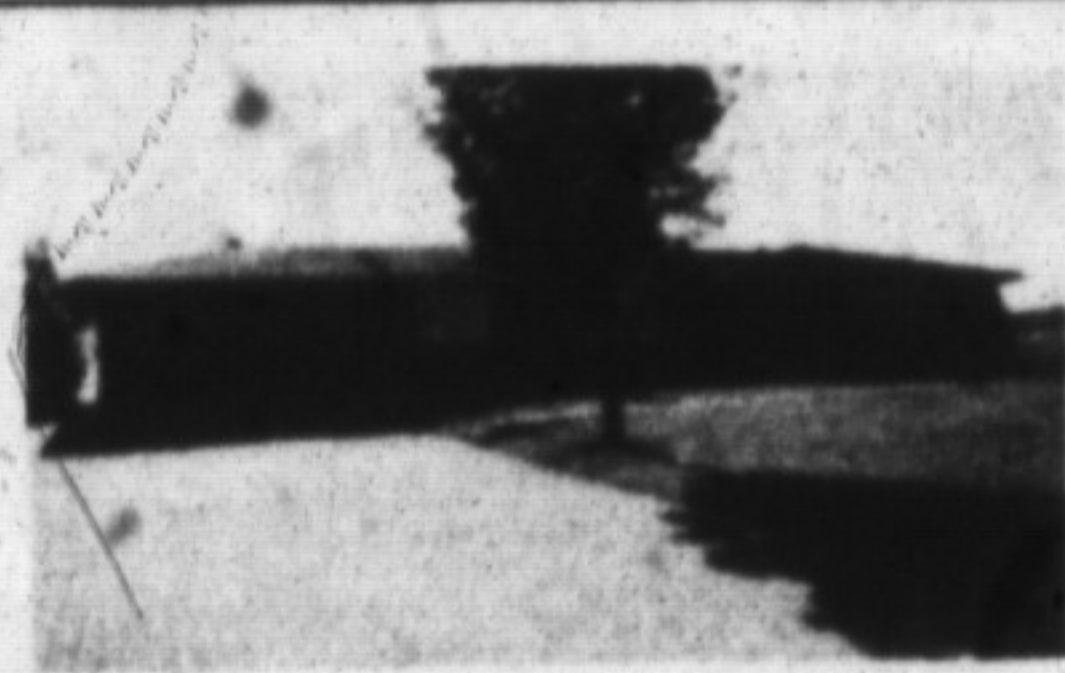


# LOOKING FOR A NEW HOME? HERE'S YOUR GOLDEN OPPORTUNITY.



### COUNTRY COMFORT

This gorgeous bungalow situated on less than an acre of land features its own ever running stream, mature trees, and walkout bridge to garden! Close to Trafalgar & 401. Must be seen to be appreciated. Listed at \$279,900. Call AL VOLPE, 878-8495 for your personal viewing.



### BUY TODAY: PROFIT TOMORROW

Why not come in for a closer look. This home features separate entrances to shop and house, 401 frontage offers future investment potential on 6.395 acres. Call JAMES D. SNOW or JOE MANCHISI at 878-8495 for your personal inspection today. Reduced to \$425,000.



### CARRIAGE SQUARE

\$14/sq. ft.

565-1730 sq. ft. of main floor commercial space available for lease. Also 2nd floor office and basement storage. Call JIM or LORRAINE KERR at 878-8495.



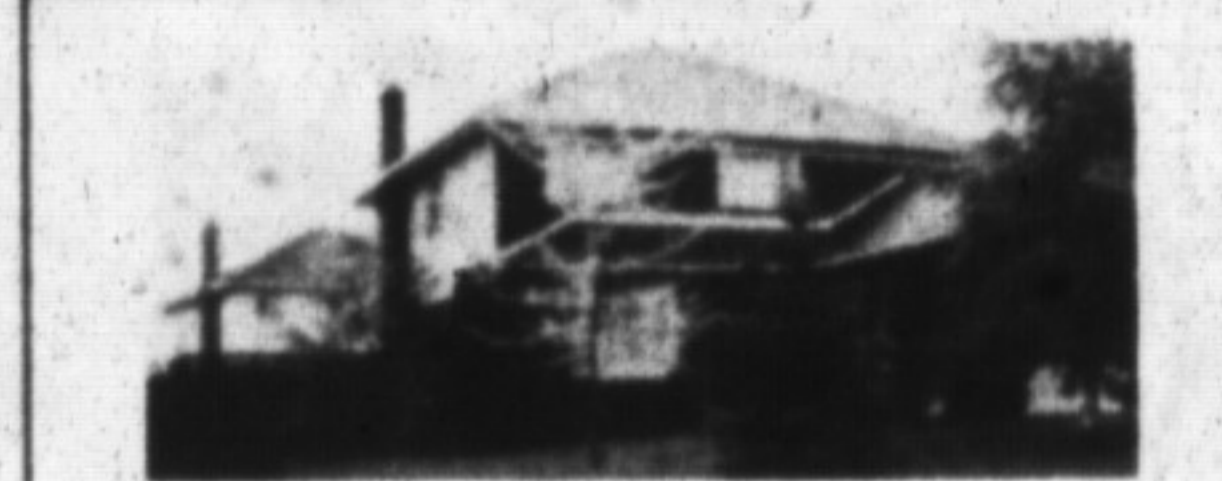
### BE HOME FOR CHRISTMAS

Celebrate the holidays in your new home, be cozy and warm with your new fireplace, included in the price are three bedrooms, main floor den, living room and dining room, rec room with wet bar, kitchen that has been recently renovated and located just outside of Milton, close to James Snow Parkway and 401. Listed at only \$219,000, and worth an inspection. Make an offer, give JOAN E. TATTRE a call at 878-8495 or 876-2745.



### A CHRISTMAS PACKAGE

awaits you! Charming 1-1/2 storey home with large principal rooms, country kitchen, 2 fireplaces, spacious dining room, wonderful garden aglow! \$214,000. Call NOVA SPARKS-AUSTIN, 878-8495 or Tor 821-4764.



### ATTRACTIVE HOME; ATTRACTIVELY PRICED \$269,900.

This home is family-sized and has very many impressive features including a greenhouse kitchen which overlooks the large yard, sunken family room with fireplace and w/o to a 16x20 inground pool. Formal living room & dining room, main floor laundry, 4 large bedrooms inc. 4 pc. ensuite. Please contact DIANE ROBINSON, 878-8495 for more details.

### BUSINESS FOR SALE The Health Care House

Retail outlet for Healthcare products located in medical centre beside "Milton District Hospital". Good traffic area, main floor, good location, licenced "ADP" Vendor. Take over 5 yr lease for 900 sq. ft. Inventory available @ cost. Call DON PELZ for information 878-1029.

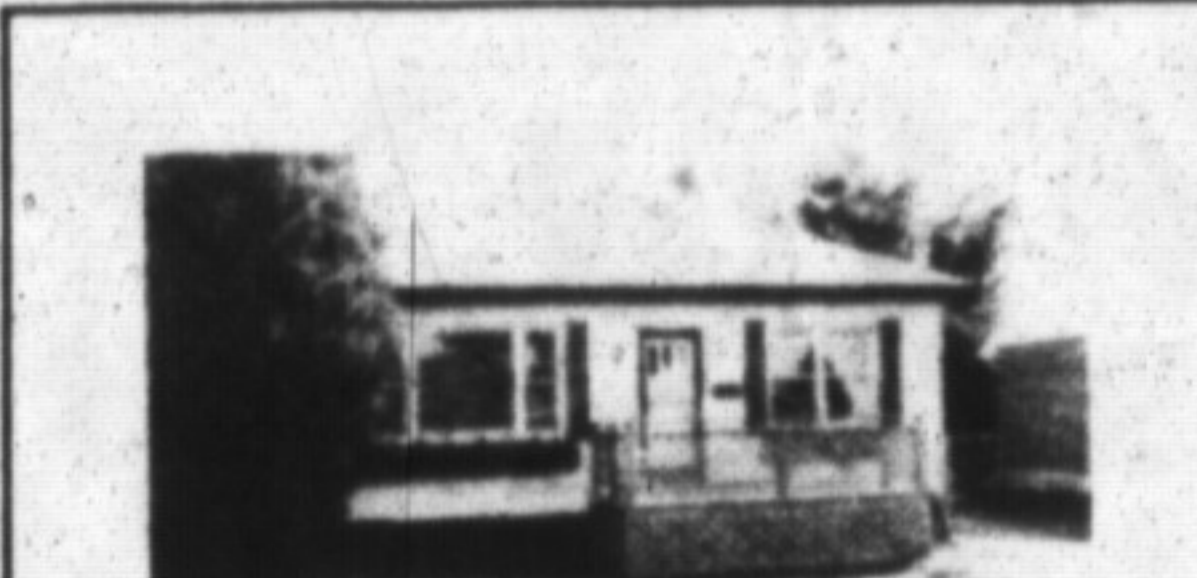
### WANTED

Home with inground pool, 3-4 bedrooms in town or close to town. \$170-180,000.00. Call AL VOLPE.



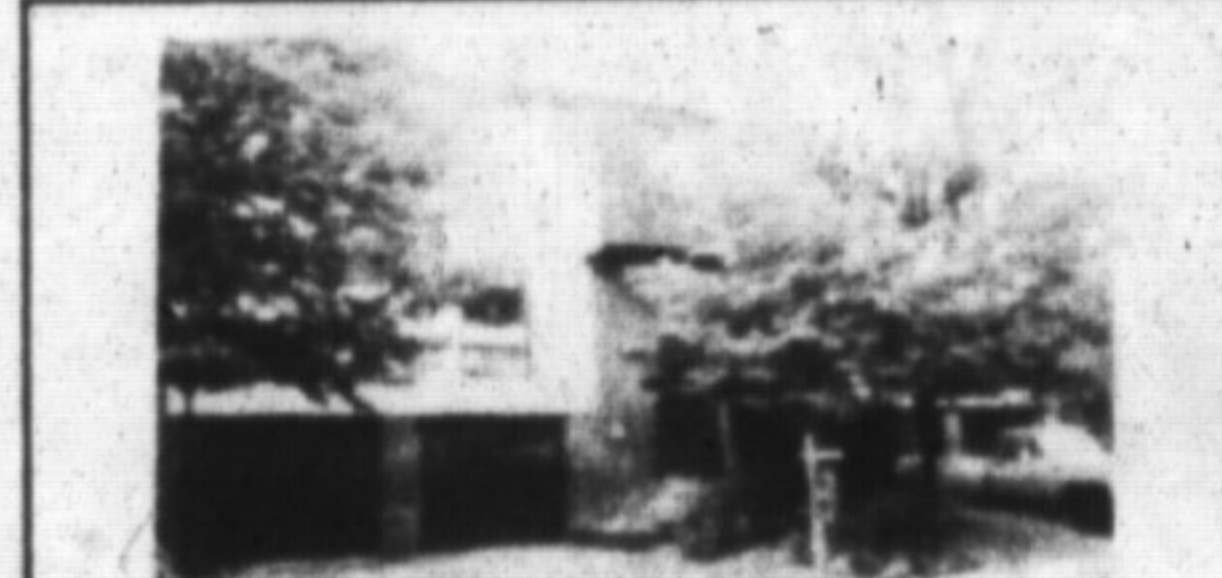
### VINTAGE VICTORIAN

This home can be used as a large single family dwelling with 8 bedrooms, triple car garage and in-ground concrete pool or as a 6 bedroom home with a completely self contained 2 bedroom apartment, has formal living room and dining room, 2 complete kitchens and much more, must be seen to be truly appreciated. Income today - single family home tomorrow. It's your choice. \$499,000. Call JIM KERR at 878-8495 for all the details.



### FIRST INVESTMENT

This bungalow priced at \$169,500 is the perfect first investment. This two-bedroom home features finished basement and a single car garage, and is waiting for you. Call JAMES D. SNOW for your inspection today, 878-8495.



### MOVE IN

and just arrange your furniture, this 3 bedroom condo has large master with double closets and ensuite, upgraded broadloom throughout, 2 pc. main level bath, eat-in kitchen, and shows well. Call JOAN E. TATTRE, 878-8495 or 876-1575.

### THINKING OF BUILDING THAT DREAM HOME?

10.45 acres building lot in Orangeville, listed at \$135,000. Call AL VOLPE for more info, 878-8495.

12 ONLY - Prestigious building lots, 2 to 10 acres in size, Northwest-Milton close to 401 & Guelph Line, Vendor willing to take 50% plus back in (V.T.B.) Vendor take back at 10% for 2 years.

Call DON S. PELZ for more info & viewing 878-8495.



### TOO GOOD TO MISS

Everything you could possibly want is in this semi, central vac & air, living room with fireplace, separate dining room, eat-in kitchen, finished rec room and listed at only \$169,900. You owe it to yourself to look at this one. Call JOAN E. TATTRE, 878-8495 or 876-1575.



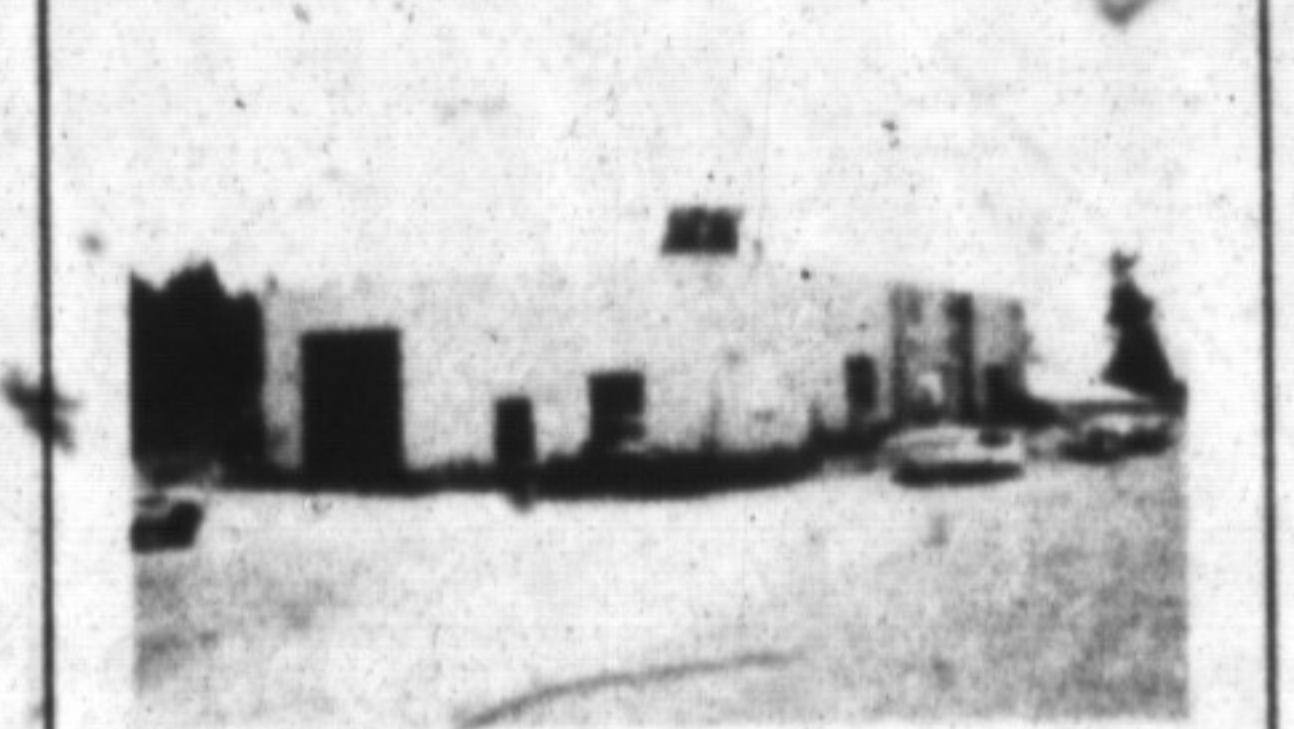
### DRASTICALLY REDUCED - \$398,500.

Value like this deserves your attention. This 4 BR home has everything a large family requires. Ideal for children or family with parents who live with them. Large country kitchen, family room with fireplace, formal living room & dining room, Loft can be used as sitting area off 4th BR or library/den; 4 baths. Finished basement complete with games room/wet bar and billiard table. Call DIANE ROBINSON 878-8495, today to view this property.



### CHRISTMAS IN THE COUNTRY

2.91 Acres of winter wonderland in popular Campbellville Estates area. Recently built solid home featuring hardwood floors, Mother's kitchen, modern family room, 3 baths, extra large rooms with a vista view! \$329,000. Call NOVA SPARKS-AUSTIN, 878-8495, or Tor 821-4764.



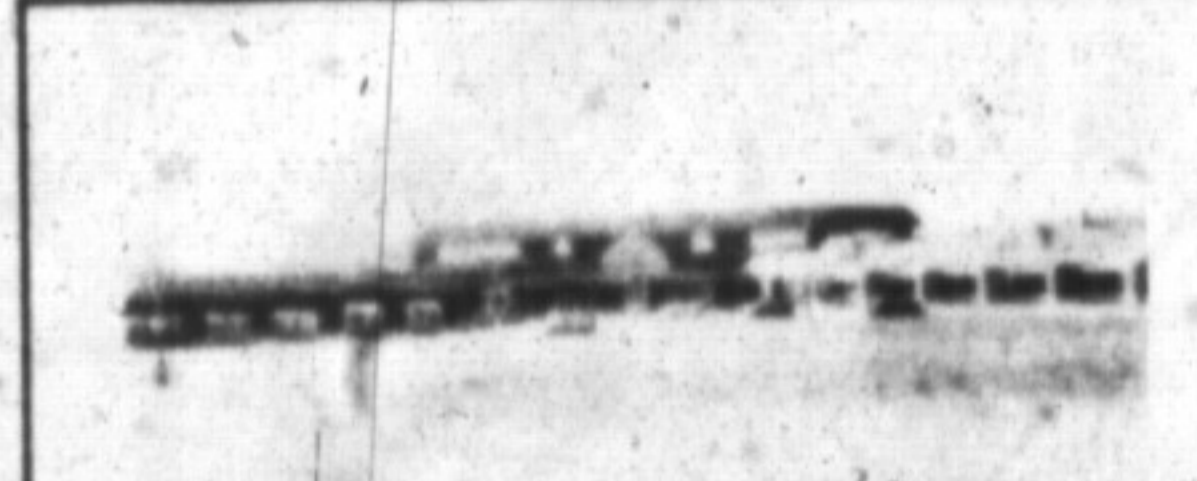
### A2 ZONING - \$279,900.

See for yourself what 1-1/2 acres of land and 6500 sq. ft. of block building can do for you, for more information call AL VOLPE, 878-8495.



### TERRIFIC LOCATION FOR RETAIL BUSINESS

Here's 1300 sq. ft. of retail space with downtown exposure, available immediately. Flexibility on leasehold improvements. Call JAMES D. SNOW, 878-8495, for your appointment today!



### NEW PLAZA FOR LEASE

First class location  
FREE rent period  
FREE leasehold improvements  
Good location available  
Major tenants in place  
Call SCOTT B. PRIOR, for more information, 878-8495.



### REDUCED FOR SALE 64/ft.

Industrial M-1 units  
Contact RON TWISS/ J. KERR

### INDUSTRIAL, COMMERCIAL & INVESTMENT

2.9 acs Industrial Land - offers "M2" zoning, full services, 60% lot coverage, \$350,000. per acre.  
OVER 23,000 sq. ft. Hwy. Commercial - 100% leased, A.C. asking \$1,900,000.  
10 ACRES - next to "M2-A" lands, some income now, ind. potential for specific use. Asking \$1,300,000.  
Commercial Space for Lease - prime & proven locations in downtown Milton. Please call for more information.  
Call James D. Snow, 878-8495.

Charles Kerr 338-7248  
Jim Kerr 878-8495  
Lorraine Kerr 878-8495  
William Lenizky 853-3797

Joe Manchisi 335-5489  
Don Pelz 878-1029  
Scott B. Prior 878-8495  
Diane Robinson 878-4393

Paula Rasmussen 854-0176  
James D. Snow 878-2172  
Nova Sparks-Austin 878-6728  
Joan Tattie 876-1575

Ron Twiss 878-4056  
Al Volpe 827-9025  
Sonja Williamson 875-1924

Office Staff: Marie Austen, Tracy Young, Elaine Stover.

420 MAIN ST., MILTON  
**878-8495**  
Toronto Line 821-4764.

**Century 21.**  
We'll give our word to you.™



**GOLDEN REAL ESTATE LIMITED**