

BEST HOMES

ALSO REACHING MISSISSAUGA, OAKVILLE, BURLINGTON, GUELPH & CAMBRIDGE

The Canadian Champion

Milton, Ontario

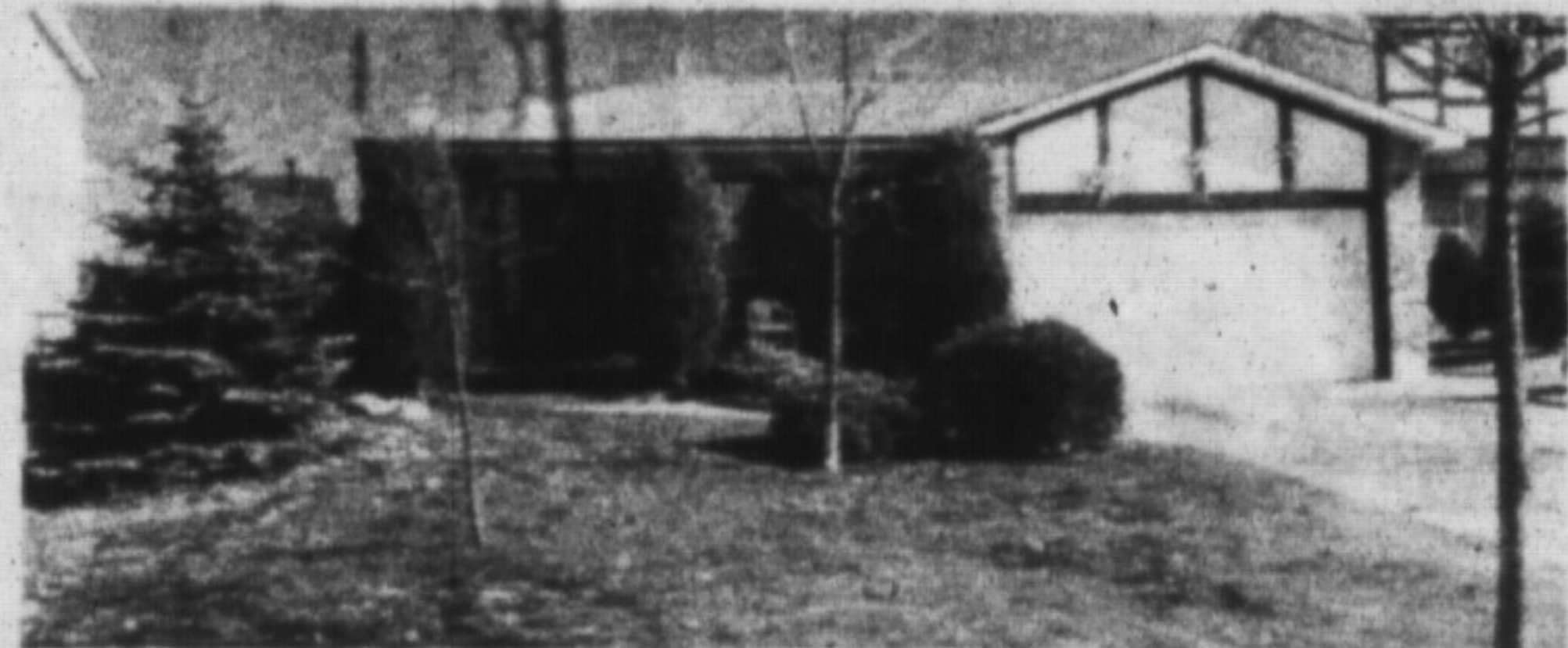
November 14, 1990



REDUCED BY \$62,900.

Everyone is looking for value... well, look no more... you've found it! 4 bdrms., main floor family rm. with fireplace, central air, inground pool, set on 3 acres. Assumable mortgage at 11.75%. \$297,000.

ROYAL LEPAGE REAL ESTATE
HELEN HARDY 878-8101



LOOKING FOR SOMETHING WITH EVERYTHING

New greenhouse kitchen with skylight, four bedrooms, central air, central vacuum, family room, fireplace, 16' x 32' kidney shaped pool, double garage, very private garden with extensive landscaping. Reduced to \$240,000.00.

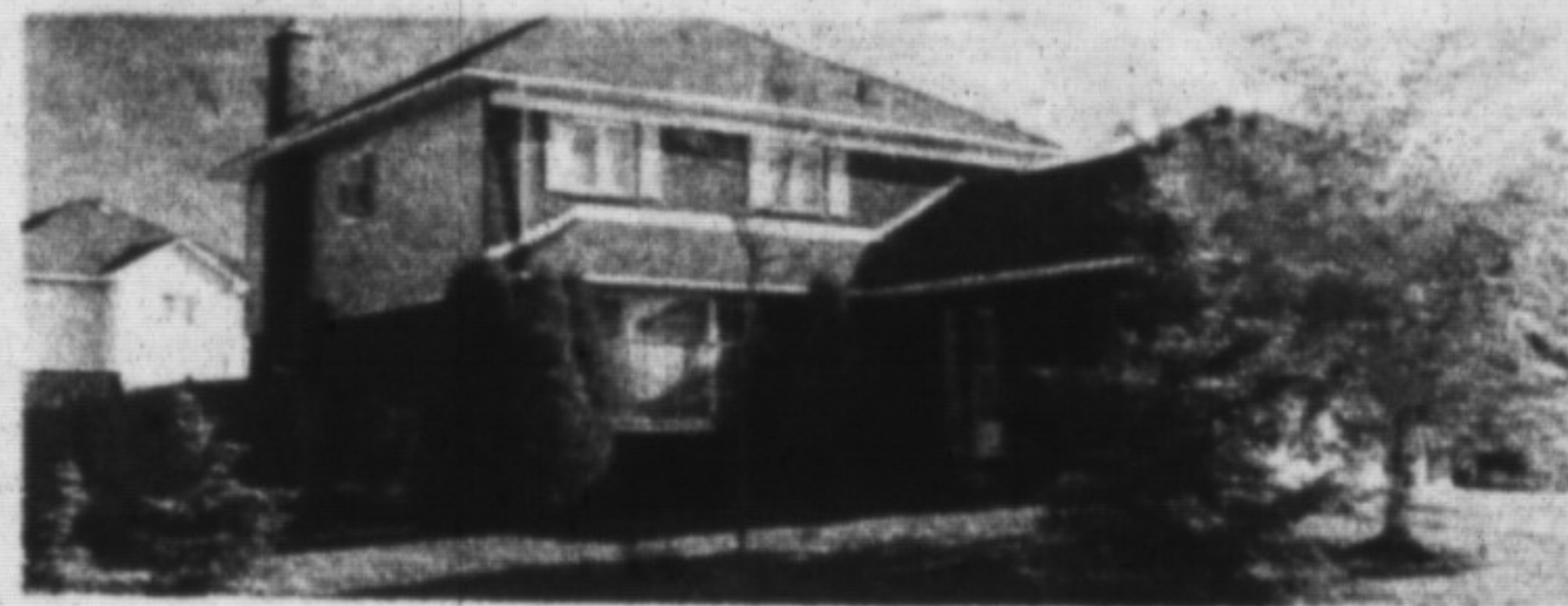
ROYAL CITY REALTY LTD.
EVA GOODING 876-1156



GEORGETOWN — GUELPH — TORONTO

From this Acton 2 bedroom, 2 storey your commuting choices are many and our price is low. For just \$199,900 you get a fully detached home, located in a well established area that is close to schools and recreation. Please call to find out more about #60.

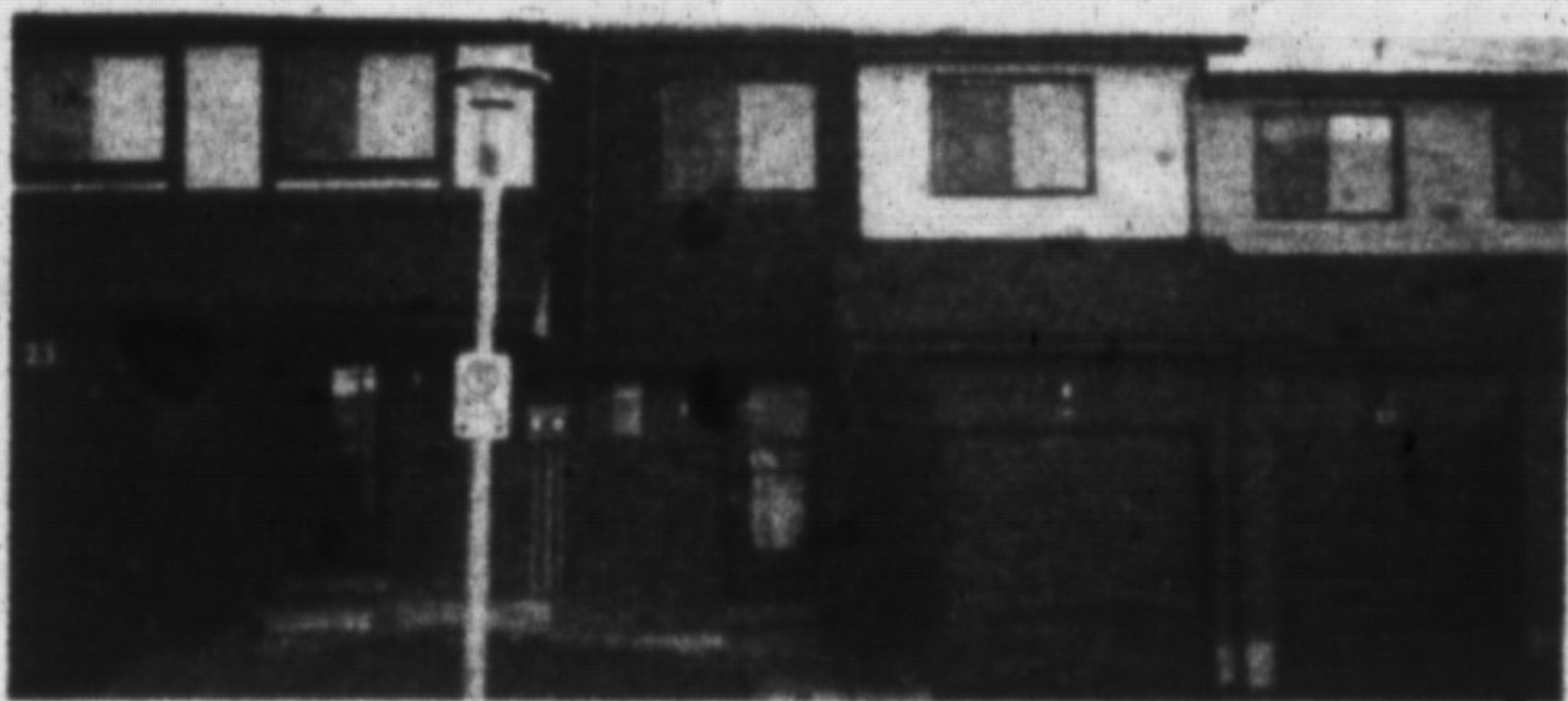
REALTY WORLD — W. J. McCRUDDEN REAL ESTATE INC.
DICK BELFORD 878-1133



REDUCED TO \$269,900.00

Family home with centre hall plan includes 4 bedrooms and 4 pce. ensuite, formal dining room, living room and separate family room with fireplace, large greenhouse kitchen overlooks professionally landscaped garden and inground pool.

CENTURY 21 GOLDEN REAL ESTATE LIMITED
DIANE ROBINSON 878-4393 or 878-8495



"OPPORTUNITY KNOCKS"

First Time Buyers should take a look at this beautiful 4 bedroom home with all the features of a large semi, but at a much lower price. \$92,000.00 1st mortgage at 10-3/4% makes financing easy. For all the details please call

RE/MAX MILTOWNE REALTY CORP.
STELLA HALL 878-2365



GEORGIAN — \$390,000.

This beautiful centre hall plan offers up an executive home finished in grey tile, white trim and rose coloured broadloom. Located in a prestigious estate subdivision of Campbellville. It's a must to see! \$390,000.

RE/MAX MILTOWNE REALTY CORP.
MAURICE MILJOUR 878-2365



TIMBERLEA TERRIFIC

This family home features: oak kitchen, French doors, upgraded flooring & bathrooms, wainscoting, large, beautifully landscaped fenced lot and much more! Call us for a viewing. \$222,900.

RE/MAX MILTOWNE REALTY CORP.
LINA & WAYNE WARNER 878-2365



ATTENTION GENTLEMAN FARMER

75 acres, scenic rolling farmland set up for cattle and horses, located 5 mi. N. of 401. The beautifully restored 5 bdrm. century home is just waiting to welcome your family. Separate 24 x 18 building is ideal for studio or guest house. Asking \$980,000. Call for a list of extras.

COUNTRYWIDE CAMPBELLVILLE REALTY LTD.
HEATHER ASHBEE 854-2294