



**MOST STORES
Open Sunday**
CHECK STORE LOCATION FOR
SUNDAY OPENINGS & HOURS
PRICES EFFECTIVE
SUNDAY NOV. 18 -
SATURDAY NOV. 24, 1990.
Where applicable, the retailer has the right to
limit quantities to meet local
requirements. Coupon value limited to two
dollar amount in this ad limited to number
indicated. ©1990 A&P, Inc.

**6th BIG WEEK OF OUR
GRAND OPENING
AT 500 LAURIE AVE. - MILTON**

Check out
our... **SUPER SPECIALS**

SELECTED VARIETIES, KRINKLES OR
**Hostess or Ruffles
Potato Chips**

190 g - 200 g BAG

SAVE
\$1.20
.99

LIMIT: 4 BAGS PER FAMILY PURCHASE.

PARTLY SKIMMED
**Fresh 2%
Milk**

4 LITRE BAG

WITH
COUPON
BELOW
SAVE
\$1.00

**Nabisco
Shreddies
Cereal**

LARGE 900 g BOX

SAVE
\$1.40
1.99
WITH COUPON BELOW

FROZEN, SELECTED VARIETIES
**Old South
Orange Juice**

355 mL TIN

SAVE
70c
.99
LIMIT: 4 TINS PER FAMILY PURCHASE

OLINDA
**Pure
Apple Juice**

48 FL OZ TIN

SAVE
80c
.99
LIMIT: 4 TINS PER FAMILY PURCHASE

SELECTED VARIETIES
**Chef Boyardee
Pastas**

426 mL TIN

SAVE
76c
.99
LIMIT: 4 TINS PER FAMILY PURCHASE

JANE PARKER
**Raisin
Pie**

625 g SIZE

SAVE
\$1.10
.99
LIMIT: 4 PIES PER FAMILY PURCHASE

PRODUCT OF SPAIN, BAGU BRAND
**Easy to Peel
Clementines**

2.3 kg CRATE

4.99

CUT FROM CANADA GRADE "A" BEEF, 6 BONE, OVER READY
**Prime
Rib Roast**

8.36/kg

3.79
SAVE \$2.50 lb

WITH THIS
COUPON

SAVE \$1.00
CEREAL
Nabisco Shreddies

LARGE 900 g BOX

1.99

LIMIT: 1 bag per coupon.
Offer valid Nov. 17 - Nov. 24, 1990.
Purchase price without coupon \$2.99. S.C. #636

WITH THIS
COUPON

SAVE 50c
FROZEN, SELECTED VARIETIES
Stouffers Entrees

200 g - 340 g PACKAGE

1.49

LIMIT: 1 package per coupon.
Offer valid Nov. 17 - Nov. 24, 1990.
Purchase price without coupon \$1.99. S.C. #635

REGULAR OR LITE
SAVE \$1.30
**Beatrice
Sour Cream**

500 mL CONTAINER

1.49

LIMIT: 4 CONTAINERS PER FAMILY PURCHASE

VALUABLE
COUPON
SAVE \$1.00

OFF PARTLY SKIMMED
Fresh 2% Milk

4 LITRE BAG

LIMIT: 1 Bag per coupon.
Offer valid Nov. 18 - 24, 1990.
Pay regular price without coupon.

**500 Laurier Ave.
MILTON**

MDHS 1990 Ontario Scholars

The following Milton District High School graduates recently became Ontario Scholars for receiving a minimum of 80 per cent for six OAC (Grade 13) credits.

The awards were presented at the high school's commencement ceremonies November 2. Photos of Ontario Scholars Leticia Martin, Sean Death and Shaun Noronha were not available.

For more MDHS Ontario Scholars, see Page L57.



Michelle Van Grunsven



Cheryl Marling



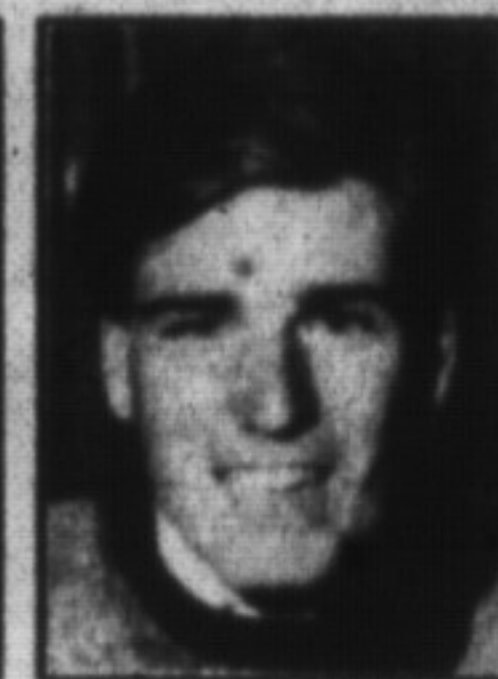
Brian Poth



Mark Lonergan



Kelly Schuyler



Adam Blackmore



Greg Tansley



Matthew Walker



Robin Green



Marc Rader



Stephanie Hunter



Bill Hunt



Angela Andrews



Sheena Wrigglesworth



Sharon Bursey

1990 PROPERTY ASSESSMENT

The annual Assessment Roll listing the assessed value of each property in your municipality will be delivered to your municipal clerk on December 18, 1990. The amount of property tax (municipal and school) you will pay on your home or business in 1991 is determined by multiplying your assessed value by the mill rate, which is calculated by your municipality. The mill rate is based on the financial needs of your municipality, county or region, and school board.

Notice of Property Valuation

Notices of Property Valuation are mailed to property owners and tenants, prior to the delivery of the Assessment Roll, only if any of the information relating to their property assessment has changed during the past year, such as the assessed value, school support or address; or if they appealed their 1989 property assessment.

Information Open Houses

Whether or not you received a Notice of Property Valuation, you may have questions about your property assessment. If you do, please come to an information Open House. An assessor from the Ministry of Revenue's Regional Assessment Office will be available to explain your assessment, answer your questions, and change any inaccurate information relating to your property.

If you have questions but can't make it to an Open House, please call or visit the Regional Assessment Office.

The date and location of the Open House in your municipality and the address of the Regional Assessment Office are listed below.

Appealing Your Assessment

If you are still dissatisfied with your assessment after going to an Open House or contacting the Regional Assessment Office, you may appeal to the Assessment Review Board. The appeal must be filed within twenty-one days after the delivery of the Assessment Roll.

To file an appeal, please use the form on the back of your Notice of Property Valuation, write a letter, or use a Notice of Appeal form. This form and the address of the Assessment Review Board are available at Open Houses, the Regional Assessment Office, and your municipal office.

The final date for appealing your 1990 assessment is January 8, 1991.

Les bureaux régionaux d'évaluation situés dans les régions désignées offrent leurs services en français. Pour de plus amples renseignements, veuillez communiquer avec votre bureau local.

Schedule of Open Houses

Milton Town..... Mon. Nov. 26 and Tue. Nov. 27. Milton Town Hall, Downstairs Room.
Noon to 8 p.m. Victoria Park Square, 43 Brown Street, Milton



Ministry
of
Revenue
Ontario

Halton Peel Regional Assessment Office
4th Floor
2 Robert Speck Parkway
Mississauga, Ontario L4Z 1T3
(416) 270-8050
1-800-387-5909