

Players present a murder mystery with some twists

13—The Canadian Champion, Wednesday, November 21, 1990



Gordon Gresko



Will Brookes



Shiona Watson



Julie Carr



Rick Brazeau



Susan Cranford



Steve Prevost

The director of the Milton Players Theatre Group's latest dramatic undertaking has cast a veil of secrecy over the characters.

The play, *Dead Man's Hand* contains some surprise twists that could be revealed by naming the characters. The murder mystery by Seymour Matthews opens this Friday evening at St. Clair Masonic Hall on Highway 25. Performances are also slated for Saturday, Nov. 24 — a sold out show — and Friday and Saturday Nov. 30 and Dec. 1.

Gordon Gresko is a professional director, producer, writer and actor with 18 years of experience. The Toronto resident has worked in theatre, television, radio, film and video and is directing the Players for the first time. His services are made possible through a grant from Theatre Ontario.

Last seen on stage in Milton as 10 different characters in *The Dining Room*, Will Brookes is taking on a dual role in this latest production.

A Scottish immigrant, Shiona Watson brought her love of theatre with her to Canada in 1989. She began acting at age 5 with the role of chief angel in the school nativity scene. An active member of the Georgetown Little Theatre, Ms Watson has appeared in two of that group's productions.

Julie Carr has been a member of the local theatre group for two years and in that time has appeared in two plays. She has also worked on various other productions in many capacities from make-up manager and costumes to assistant stage manager. This year she is secretary of the Players executive committee.

Although Rick Brazeau joined Milton Players last spring, he has been in amateur theatre before that time. In addition to playing nine characters in the Players' *The Dining Room*, he has performed with the Mississauga Players and Caprices Productions.

An experienced Milton Player, Susan Cranford is in her third season with the local theatre group and is current president of the executive. Last spring Susan directed the Players' production of *The Dining Room*. Among her on-stage credits are roles as Mona in *Come Back to the 5 and Dime Jimmy Dean*, *Jimmy Dean* and Amanda in *Private Lives*.

A resident of Milton since 1985, Steve Prevost has been involved in community theatre for three years. He started as a member of the Georgetown Little Theatre and soon began acting with Milton Players as well. For the Georgetown group he has performed in *Exit the Body* and *The Burning Man* and for Milton Players in *Private Lives* and *The Murder Room*.

The curtain goes up at 8 p.m. for each performance of *Dead Man's Hand*. To order tickets call 878-4039.

50% gain

Regional real estate sales make gains

Despite the gloomy economic trend, the outlook for area real estate improved in October with a 50 per cent increase in the dollar volume of sales over September's total.

According to the Oakville, Milton and District Real Estate Board (REB), real estate sales totalled more than \$43 million last month, up from \$28.7 million in September. The number of sales also increased with 173 properties changing hands — 42 more than September's total.

"It's impossible to predict where the market is headed," said Anell Francis, REB president. "The October figures are promising, but the numbers are still down."

In Milton, there were 20 sales last month for a total dollar volume of \$3.2 million, roughly half of last year's totals and down slightly from September.

Mrs. Francis said two-thirds of all properties last month sold for less than \$250,000, a fact which highlights both a trend towards buying smaller homes and a five to 10 per cent drop in house prices.

Growing uncertainty over the federal government's economic policies means many people are taking a "wait-and-see" approach to their real estate plans, said Mrs. Francis.

And, with only two months to go before the implementation of the GST, there is still widespread uncertainty over its implications for real estate. While the seven per cent tax will not be levied directly on resale properties, it will apply to all real estate commissions, legal fees and disbursements.

Mrs. Francis noted that the growing number of bankruptcies, layoffs and plant closures is making many people leery of making a move. Others are taking advantage of softer house prices to buy a house that's

bigger, better or in a better neighbourhood.

"Many people believe prices have slipped back to where they were a year or two ago — which is probably an accurate reflection of the times," said Mark Mallalieu, REB vice-president and Milton broker.

"The real estate boom of the mid-'80s made many people think they could make enormous profits on their property in just a short time. That's proving unrealistic in today's market and we all have to adjust our expectations."

Mrs. Francis added that figures from the Canadian Real Estate Association show that market conditions in the Oakville/Milton area are comparable to most other centres across Canada.

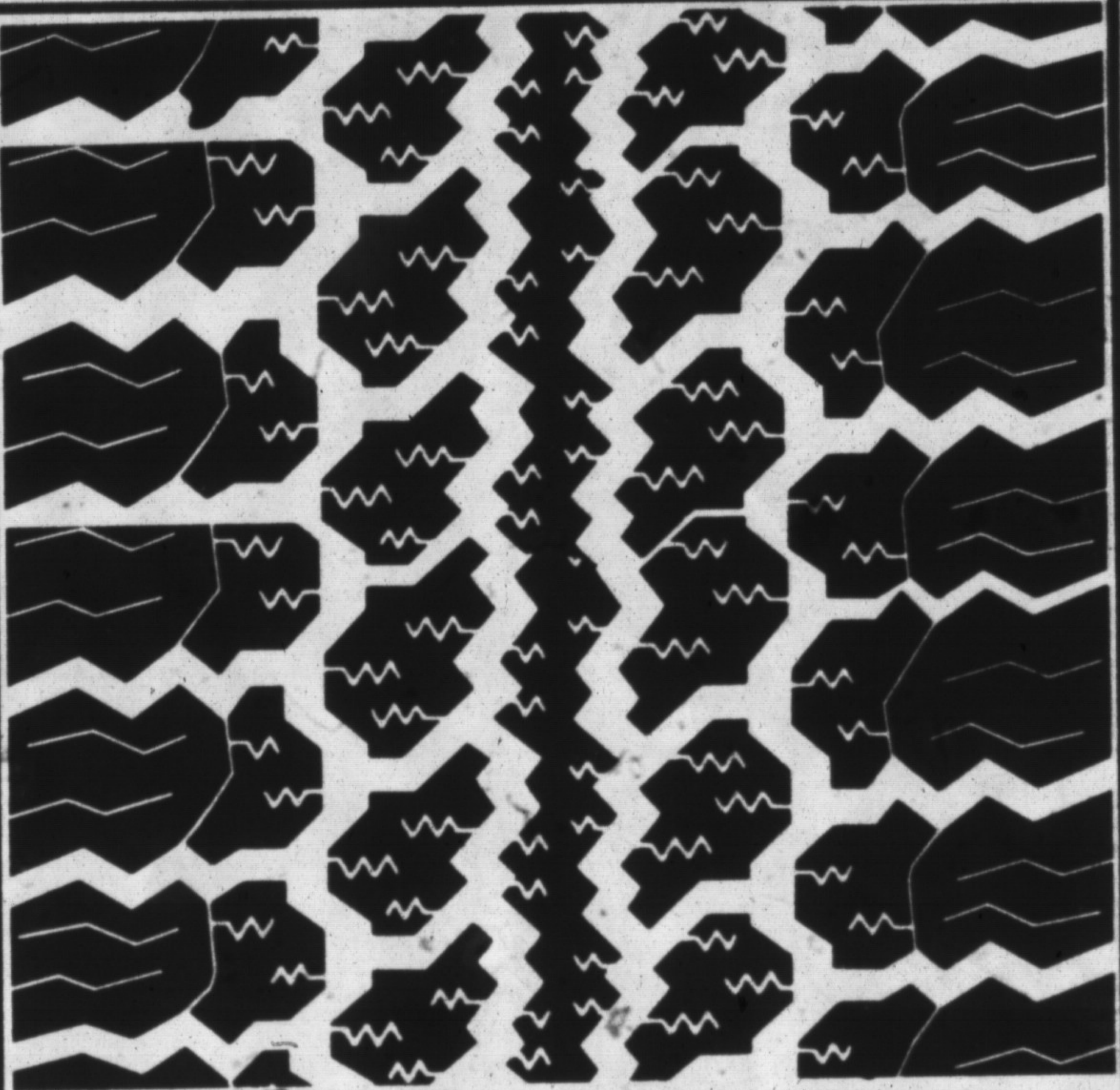
Resources on seniors

A new community resource centre featuring information for and about seniors will be officially opened tomorrow (Thursday) afternoon.

Milton Public Library will be one of three libraries in the region to have the collection of resource material supplied through the Office for Senior Citizens' Affairs.

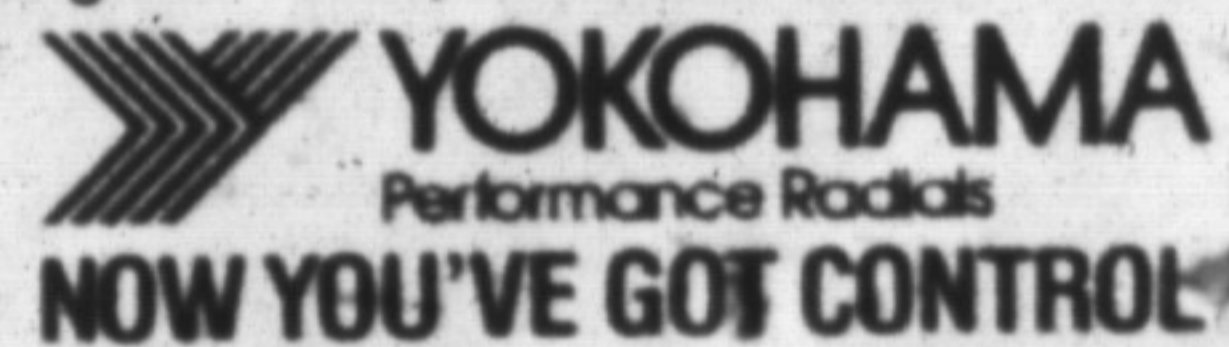
The opening will be in conjunction with the annual meeting of the Region's Elderly Services Advisory Committee (ESAC) at the Oakville Public Library, 120 Navy St., Oakville.

T. Philip Adams of the Office for Senior Citizens Affairs is guest speaker at the 1 p.m. meeting.



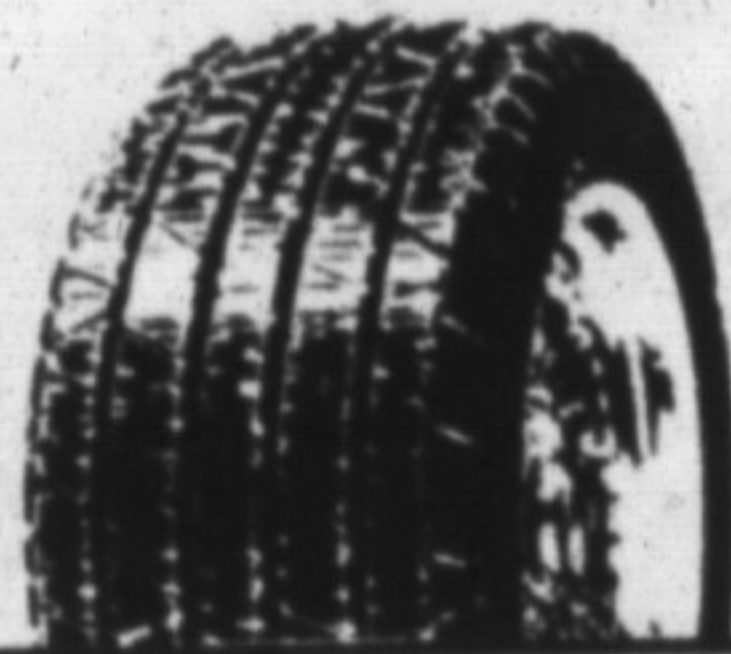
OUR IMPRESSION OF BETTER TRACTION

The Y382 all-season radial delivers superior traction with excellent handling, comfort and quietness — thanks to a computer designed tread pattern. An advanced tread compound provides long-mileage durability. Covered by Yokohama's Road Hazard Protection Plan.



THE PLACE FOR TIRES!

Milltown Tire Service Ltd.



751 Steeles Avenue East
Milton, Ontario

878-6785

878-6825

