

# ROYAL LePAGE

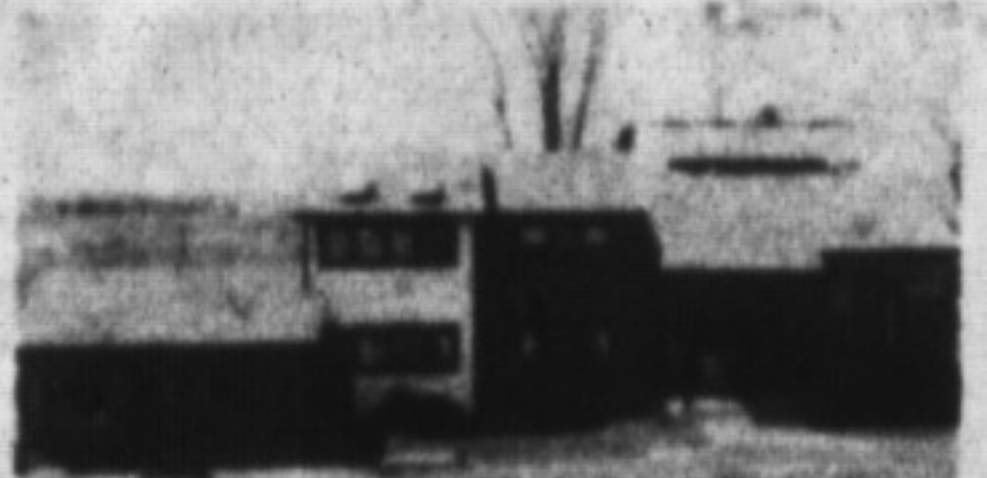
# A LEADER IN THE INDUSTRY



**LEADED GLASS & OAK WOODWORK**  
Splendid and spacious 1915 brick home set on approx. 3 acres between Oakville & Milton. Four bedrooms plus laundry room on upper level. Interesting window design. Large plus small barn. \$449,000. D. Lawrence\* or D. Kerlake\* 878-8101.



**FOR THE ASTUTE EXECUTIVE**  
Super executive 2 storey home. Many extras. 4 baths, 4 bdrm. fam. room, rec. room, 2 fireplaces, central air. Don't let me bore you, come see for yourself \$284,900. Dave Good\* 878-8101.



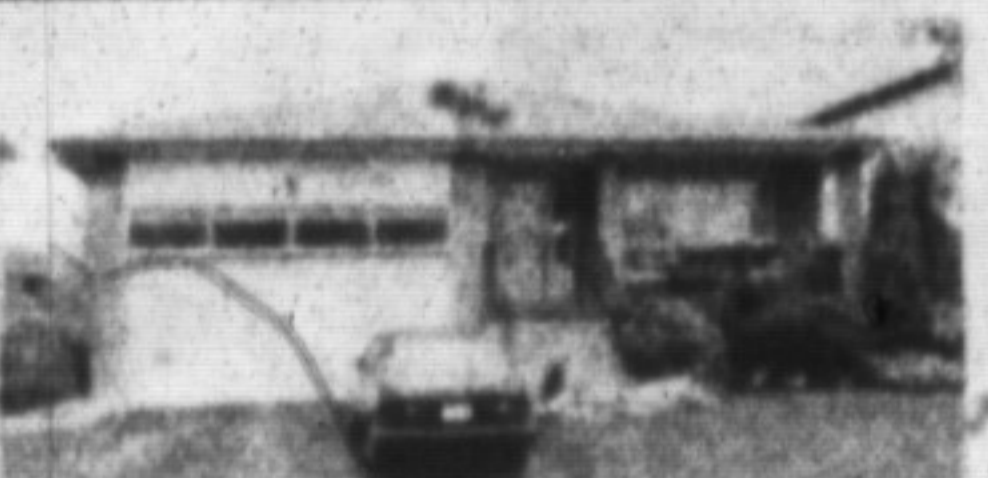
**SUN FLOODED CONTEMPORARY**  
One of a kind, 2 storey, 4 bdrm. home, set on 2 acres with a magnificent view. Gorgeous kit. of pine with built-ins, fully fin. lower level with in-law suite. Fully fenced ingrd. pool area. Call for more details. \$419,900. Joyce Hagevik\*.



**TERRIFIC STARTER \$179,000.**  
3 bdrm., 2 storey, fin. rec. room and more. Joyce Hagevik\*, 878-8101.



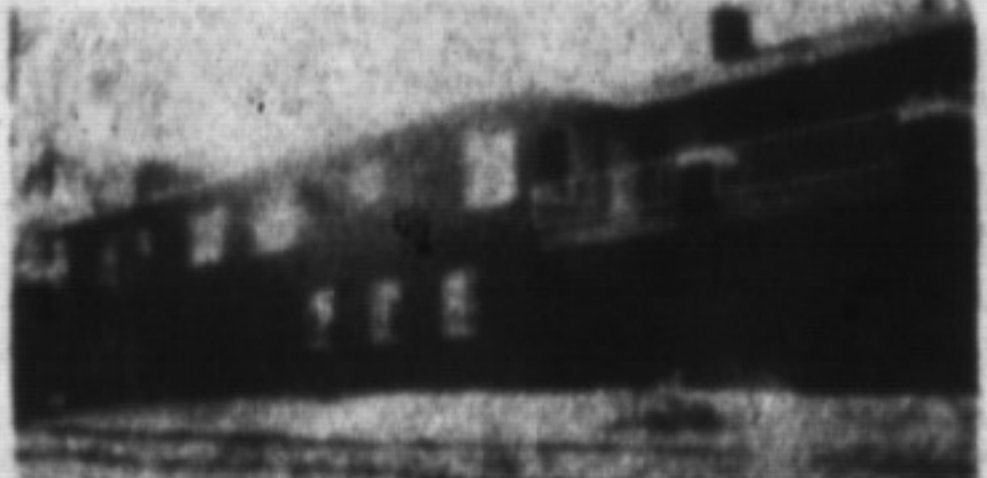
**STOP! THIS COULD BE IT \$179,900.**  
4 bdrm. b/epit, lg. yard, rec. rm with wood stove. Joyce Hagevik\* 878-8101.



**YOU'LL JUST LOVE THIS HOME**  
Nicely decorated 4 bdrm. backsplit offering upgraded bdrms., French doors, huge fam. rm. with F.P. & walkout to deck & yard. Fully finished extra lower level. A large spacious home with cen./air, cen. vac & class. \$276,900. Joyce Hagevik\* 878-8101.



**COLD WEATHER — HOT BUY! \$272,900.**  
If 2300 sq. ft. of fine living space is what you're after, then this is the right place. If 4 bdrms., 3 baths, cen. air, cen. vac, fam. rm. with F.P. & main floor laundry are on your list, then this must be your home and you could be here by Christmas. Joyce Hagevik\* 878-8101.



**SPACIOUS HOME OF DISTINCTION**  
Bi-level bungalow situated on outstanding lot overlooking the pond features open concept living & dining rms. for entertaining. 3-4 bdrms., fam. rm., F.P., 4 baths, game rm., 2 garage, many extras. CALL A Lear-Costigan\* 878-8101.



**TOP OF THE ESCARPMENT \$645,000.**  
Spectacular view on over 6 acres featuring custom-built brick bungalow 3 bdrms., master with ens. & w/o to new deck, fam. rm., F.P., rec. rm., bar, dble. gar., please CALL A Lear-Costigan\* for details. 878-8101.



**LUSH AND PLUSH**  
All brick 4 bdrm. home, featuring mbr. with ensuite & walk-in closet, main floor fam. rm. with F.P. & walkout to cedar deck & tastefully finished bdrms. with a wet bar. A MUST to view. Call Barbara Crowe\* 878-8101.



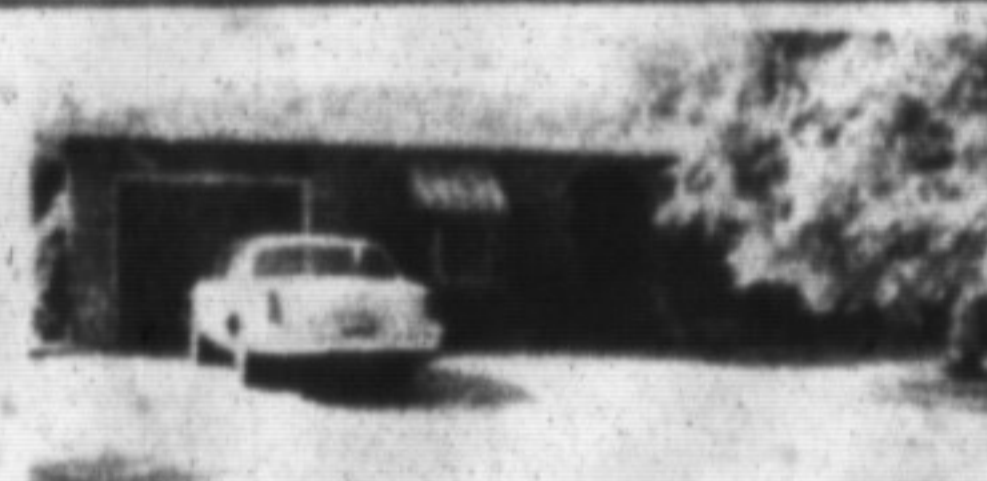
**DORSET PARK BUNGALOW \$199,500.**  
8 spacious rooms & 2 baths tastefully decorated, central air & fireplace. Finished basement has possibility for in-law suite, large fenced lot with interlocking brick patio. To view call Norma or Ed Proveau\* 878-8101.



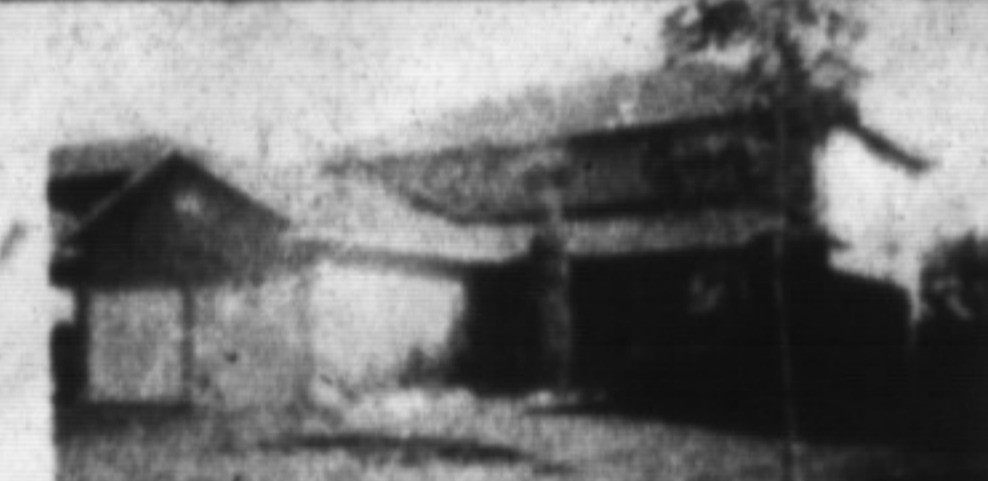
**A BIT OF ROCKWOOD HISTORY**  
Circa 1860 stone & frame home on lg. mature lot. Gorgeous country kitchen with skylite, living room with hand sanded pine flrs. Unique upstairs loft great for artist. Go Bus at your door. \$199,000.



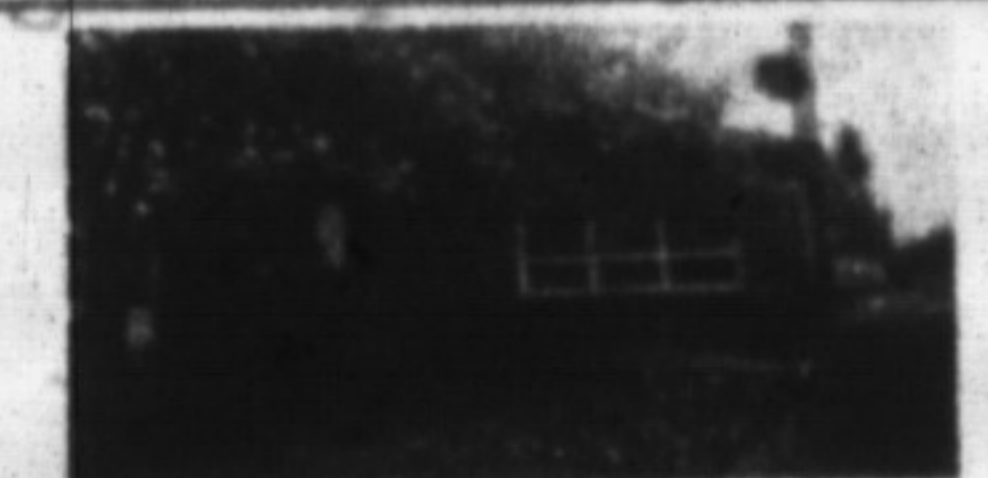
**GOING, GOING, GONE \$159,900.**  
This value packed semi won't be around long. Featuring 3 spacious bedrooms, large kitchen, sep. dining rm., living rm. with fireplace, garage, great yard, close to schools. Call Karen Irvine\* 878-8101 for your personal viewing.



**A HOME FOR ALL SEASONS \$209,900.**  
In summer enjoy your central air or sit in your spacious Florida rm. & be cooled by summer's breeze. In winter, snuggle by the massive brick F.P. and warm your toes. Home well maintained inside & out. Call Sandy Del Papa\* 878-8101.



**SHOWN WITH PRIDE \$268,000.**  
This fine family home in Timberlea features 4 bedrooms, 3 baths, main flr. family rm. & laundry, large L.R., D.R., kitchen opens to family rm., central air, immaculate neutral decor. Call Karen Irvine\* 878-8101.



**CHECK THESE AMENITIES \$164,900.**  
1) Central air  
2) Alum. soffits & eaves  
3) Main floor fam. rm.  
4) Hot tub  
5) Inground heated pool  
6) Log-Burning fireplace  
7) Finished basement.  
Call Sandi Kinsale\* to view.



**COUNTRY SETTING**  
I have only had one owner and tender loving care. Now I am for sale. If you need 3 bdrms., 1-1/2 baths, a finished rec. rm. with a F.P. and walkout, on a nice lot with a garden and fruit trees, come look me over. Lee Bunker\* 878-8101.



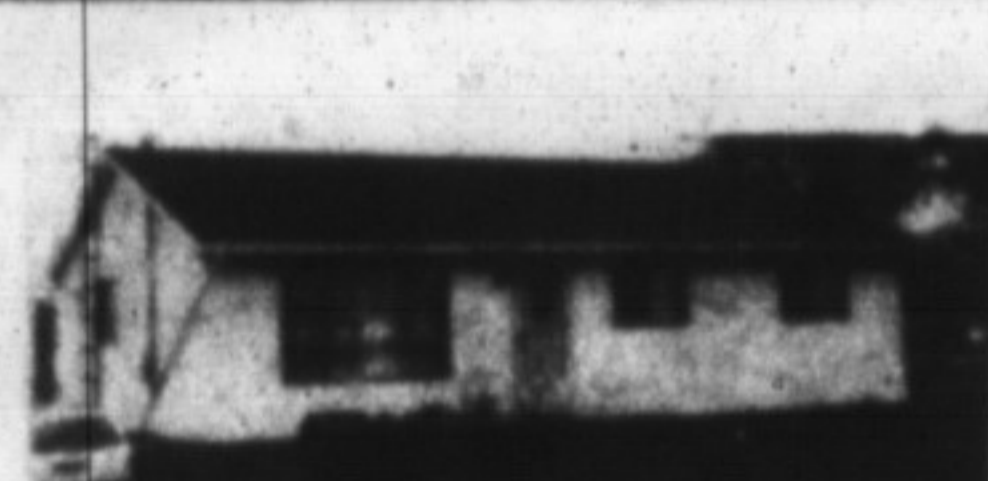
**CAMPBELLVILLE**  
Take advantage, now \$649,000.00\*, large 2 storey tudor offering everything you would expect in a home in this price range plus a 17' x 37' pool, fully size tennis court and 4 acres with mature trees. Lee Bunker\* 878-8101.



**BETTER LOOK AT ME \$225,900.**  
Entertaining size L.R., accommodates large family gatherings, while mn. flr. fam. rm. provides intimate warmth with log-burning F.P. Home also features 4 baths & fin. bdrmt. & dble. gar. Call Sandi Kinsale\* to inspect.



**\$159,900. DOLLARS COUNT HERE**  
Charming older home features 4 bdrms., large lot, quiet street, inground pool, tasteful decor. To arrange a viewing call Sandy Del Papa\* or Sandi Kinsale\* 878-8101.



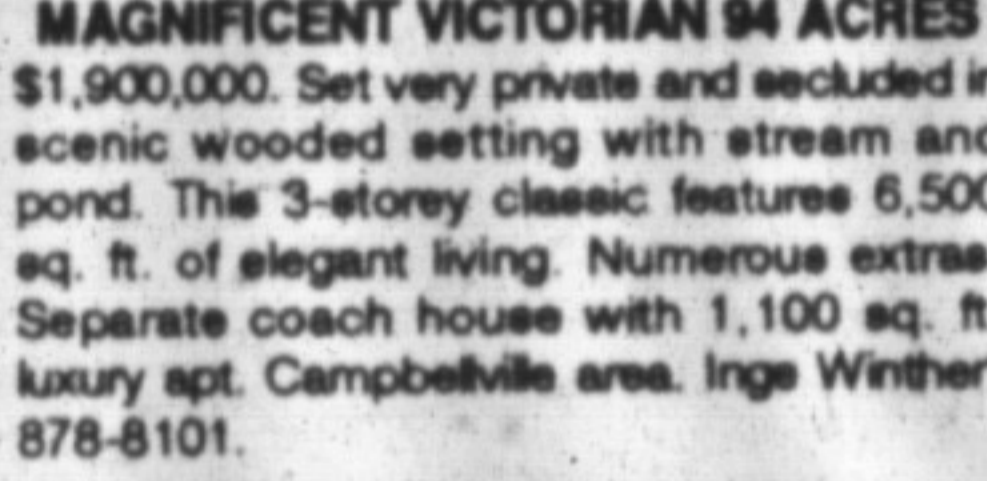
**INVESTMENT OPPORTUNITY**  
Approx. 24 acres located on Hwy. 2 west of Ancaster. Three bedroom bungalow with main floor laundry room. D. Lawrence\* or D. Kerlake\* 878-8101.



**MAKE THE FIRST STEP TO BETTER LIVING**  
Spacious master bedroom on main floor features ensuite with built-ins and large walk-in closet, huge combination kitchen and family room. Tall windows allow lots of light. Must be seen. \$449,000. D. Lawrence\* or D. Kerlake\* 878-8101.



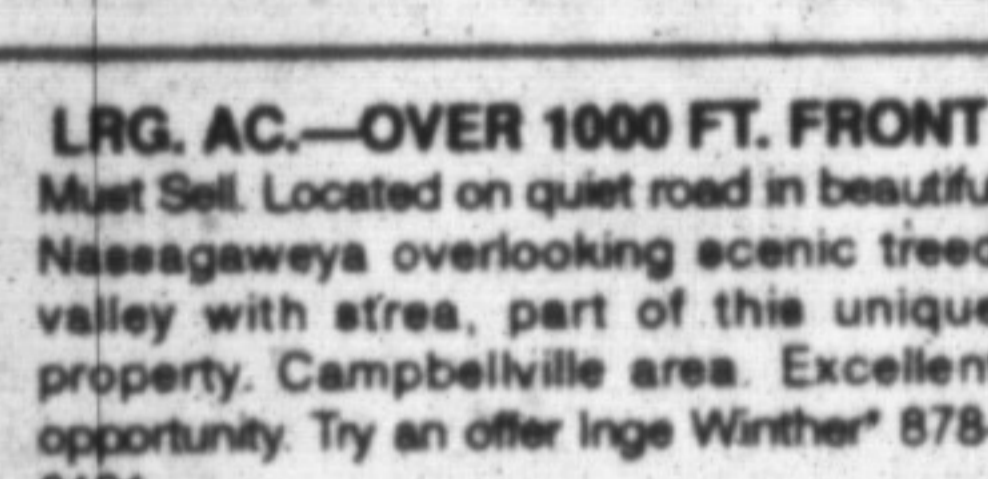
**LIVE AS YOU LIKE**  
Comfortable 4 bedroom home with 2 brick fireplaces located within minutes of Hwy. 401. Pretty 3 acre wooded lot. D. Lawrence\* or D. Kerlake\* 878-8101.



**MAGNIFICENT VICTORIAN 94 ACRES \$1,900,000.** Set very private and secluded in scenic wooded setting with stream and pond. This 3-storey classic features 6,500 sq. ft. of elegant living. Numerous extras. Separate coach house with 1,100 sq. ft. luxury apt. Campbellville area. Inge Winther\* 878-8101.



**CLASSIC GEORGIAN - SECLUDED ACRES \$599,000.** Gracious 12-room Georgian nestled on professionally landscaped 2.2 acres adorned with mature trees and featuring traditional central hall, formal living room, large separate dining room with fireplace, music room, family room with fireplace, greenhouse, kitchen, etc. Inge Winther\* 878-8101.



**LRG. AC.—OVER 1000 FT. FRONT Must Sell.** Located on quiet road in beautiful Nissagaweya overlooking scenic treed valley with stream, part of this unique property. Campbellville area. Excellent opportunity. Try an offer Inge Winther\* 878-8101.



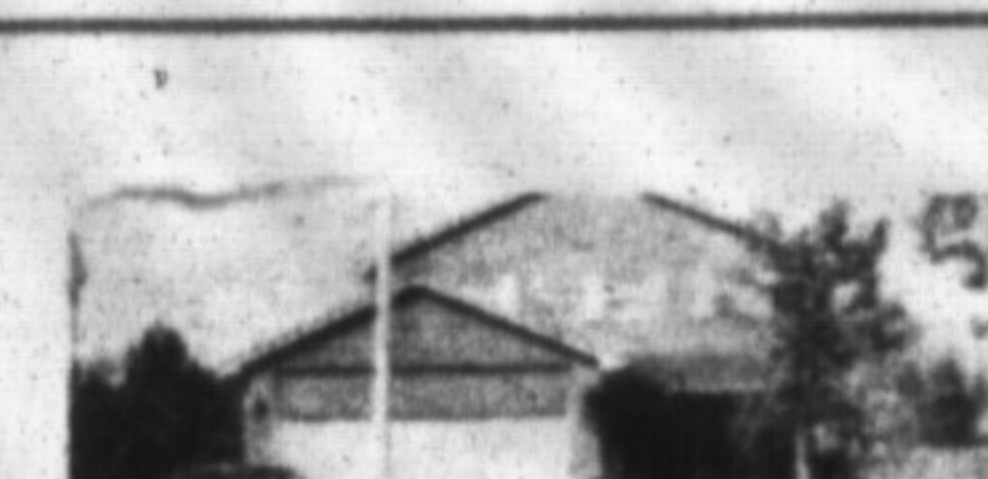
**LOOKING FOR COUNTRY? \$229,000.** Take a walk on this 5 acres and picture your dream home on this beautiful country setting with frontage on two country roads. Well on property. Try an offer. Call for info. Norma or Ed Proveau\* 878-8101.



**LOOKING FOR COUNTRY? "TOWN OR COUNTRY" OWNERS TRANSFERRED**  
1. 4 bdrm. 2 storey on large lot \$229,500.  
2. 5 bdrm. brick with stream and pond. Asking \$429,000.  
3. REDUCED! \$284,900. Custom built on 1.7 acres. TRY AN OFFER!  
Norma or Ed Proveau\* 878-8101



**OLD WORLD CHARM**  
Prestigious estate home nestled on 2-1/2 wooded acres. Surrounded by 22 acres of natural woodlands. This atmospheric 5,000 sq. ft., 2-1/2 storey features: 5 bedrooms, 5 baths, 5 fireplaces, large formal rooms. Front & back staircases, esp. maid's quarters etc. Inge Winther\* 878-8101.



**SECLUDED "SCHOLZ" ESTATE \$999,900.** nestled among mature trees on beautiful 2 acre lot backing onto magnificent natural woodlands, this tudor & stone manor features 4300 sq. ft. plus unfin. maid's quarters, 3 car garage, etc. Campbellville location. Inge Winther\* 878-8101.



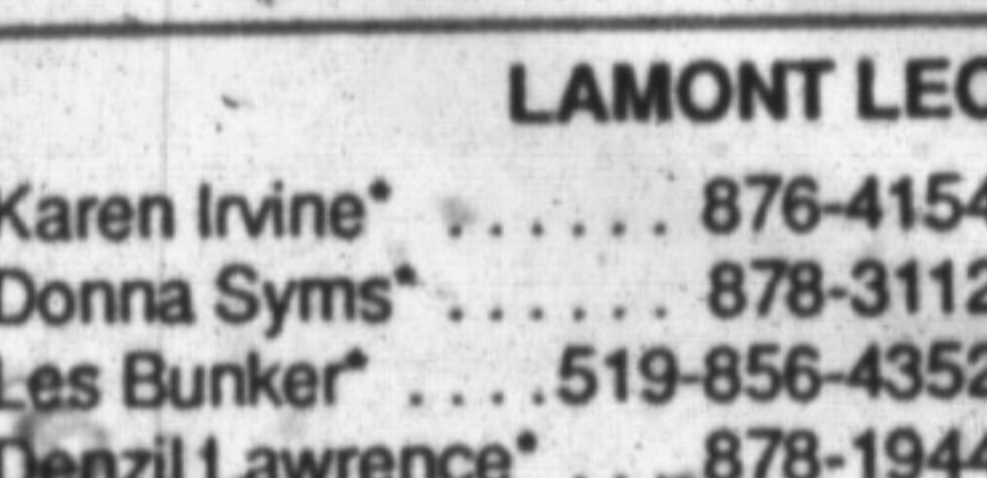
**COMMERCIAL SPACE — FOR LEASE**  
1. 1800 sq. ft. suitable for store or office. Excellent location in the centre of the business section of Campbellville.  
2. Storage space located in the Village of Moffat. Inge Winther\* 878-8101.



**MOBILE HOME**  
1990 Model on leased lot in local park. \$29,900. Donna Syms\* 878-8101.



**SAY BYE BYE LANDLORD**  
235 Bronte St. #54. \$129,900: Just Reduced.  
341 Wilson #1. \$137,900. Great complex.  
Joyce Hagevik\* 878-8101.



**WANTED BUSY FAMILY NOW! \$209,900.**  
To fill this 4 bdrm., 2 storey w/ pool on lg. lot. Joyce Hagevik\* 878-8101.



**LAMONT LEONE — Manager\*\***

**388 MAIN ST. EAST**  
**878-8101**  
(Tor. Line) 826-9218  
Toll-free 1-800-263-4176



**SECRETARIES**

Gayle Ford • Ginger Tiede  
Wendy Girard • Shelly Varley

- Karen Irvine\* ..... 876-4154
- Donna Syms\* ..... 878-3112
- Lee Bunker\* ..... 519-856-4352
- Denzil Lawrence\* ..... 878-1944
- Margaret Swain\* ..... 878-7687
- Ed Proveau\* ..... 876-1707
- Joyce Hagevik\* ..... 876-1084
- Inge Winther\* ..... 853-1990
- Norma Proveau\* ..... 876-1707
- Denise Kerlake\* ..... 876-1735
- Virginia Brazeau\* ..... 878-1221
- Rudy Arbeiter\* ..... 878-3558
- Audrea Lear Costigan\* 878-9151
- Sandi Kinsale\* ..... 878-0392
- Sandy Del Papa\* ... 878-5229
- Barbara Crowe\* ..... 878-7875
- Sandra Logie\* ..... 878-1881
- Barbara Lafleche\* .. 875-3303
- Helen Hardy\* ..... 878-3915
- Dave Good\* ..... 875-0495

\*\* Broker

\* Sales Representative

ROYAL LEPAGE REAL ESTATE SERVICES LTD., REALTOR **It's you that counts the most.**