

BEST HOMES

ALSO REACHING MISSISSAUGA, OAKVILLE, BURLINGTON, GUELPH & CAMBRIDGE

The Canadian Champion

Milton, Ontario

November 7, 1990

OPEN HOUSE
SUN. NOV. 11, 2-4 P.M.



MOVE IN BEFORE CHRISTMAS

• Vendor relocating • 10.9% mortgage • Now reduced to \$285,000. • We're waiting for your offer. N. on Guelph Line, W. on 15 S.R.
COUNTRYWIDE-CAMPBELLVILLE REALTY INC.
HEATHER ASHBEE 854-2294



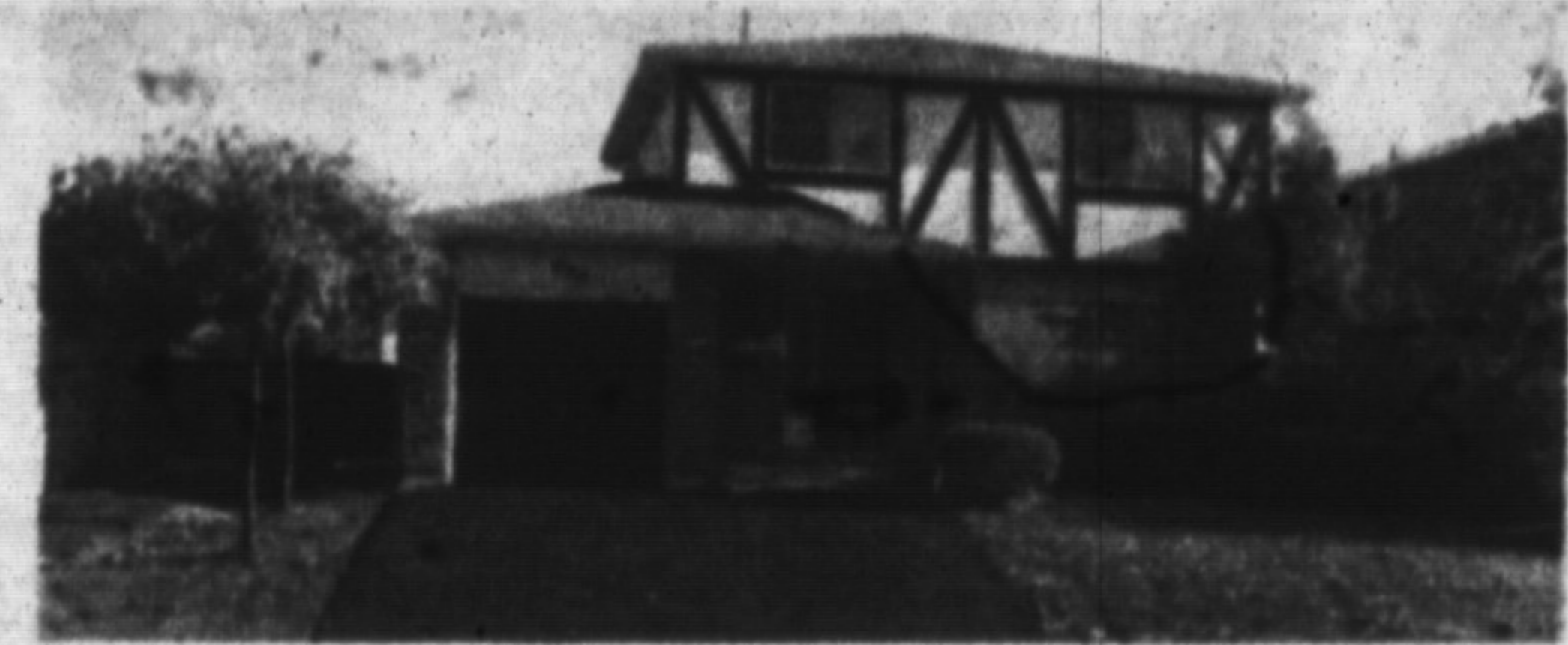
LEADED GLASS & OAK WOODWORK

Splendid and spacious 1915 brick home set on approx. 3 acres between Oakville & Milton. Four bedrooms plus laundry room on upper level. Interesting window design. Garage plus small barn \$449,000.
ROYAL LEPAGE REAL ESTATE
D. LAWRENCE or G. KERSLAKE 878-8101



MAGNIFICENT 10 ACRES

2 story, 4 bedroom custom built home. Fenced paddocks, steel barn & box stalls. For your viewing please call
RE/MAX MILTOWNE REALTY CORP.
CAROL OR ALAN BROOKS 878-2365



OWNER TRANSFERRED

And must leave this spotless 3 bedroom, 2 storey on 120' lot. Professionally finished rec. room with wood burning stove, 3 bathrooms, oversized eat-in kitchen, move in before Christmas. Asking \$192,500.
RE/MAX MILTOWNE REALTY CORP.
GAIL PULLEN 878-2365



20 LAURIER AVENUE

Country style family home with roomy parquet floored entrance. Pine and brass accents and old brick corner fireplace and interior warmth. There is a 14' x 12' deck off bright living rm. and private fenced backyard. Lower level has 2 bedrooms, all appliances and 3 pc. Fast possession \$211,000.
RE/MAX MILTOWNE REALTY CORP.
DOUG J. BUTSON 878-2365



BUILDERS, RENOVATORS, VALUE SEEKERS

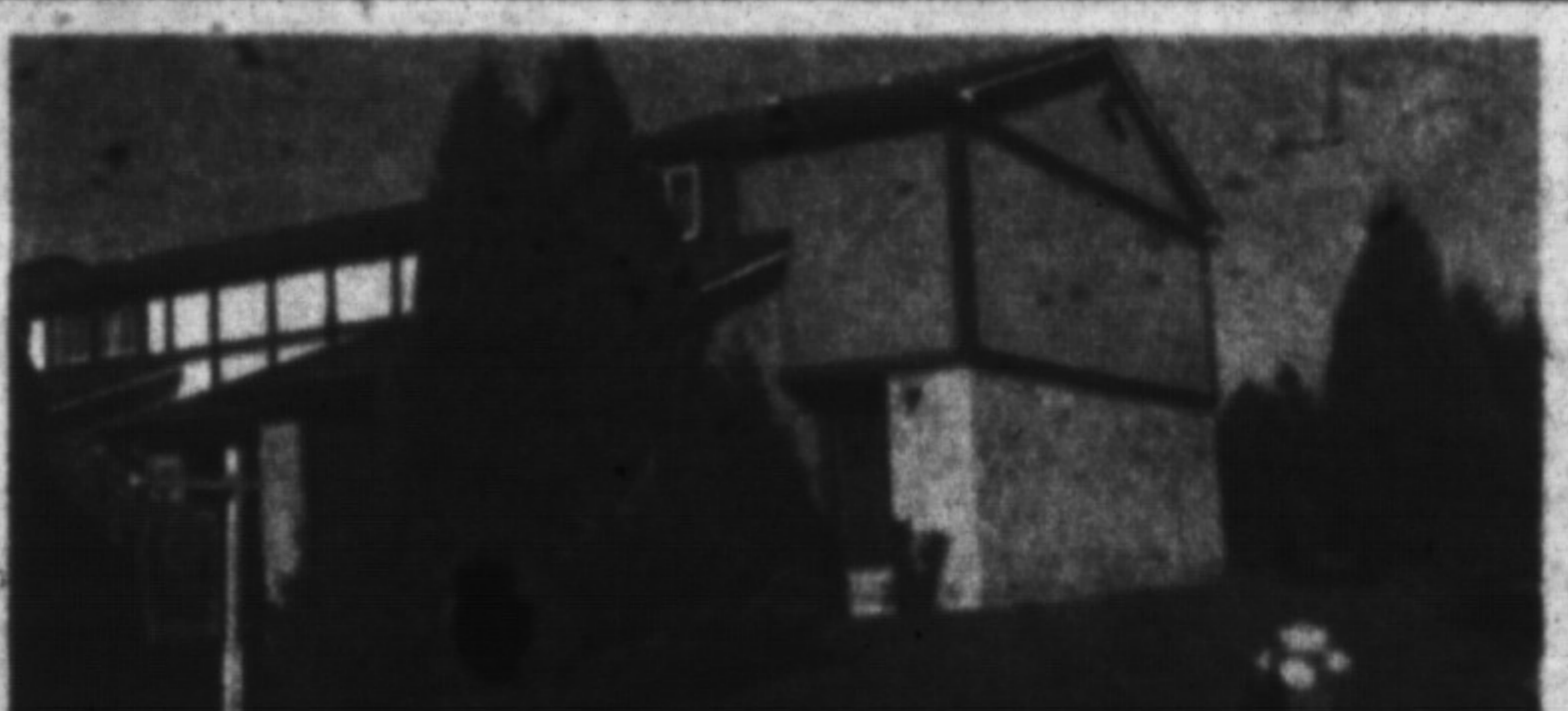
OPEN HOUSE SUN. NOV. 11, 1-4 P.M.

This 2860 sq. ft. executive beauty (plus full w/o basement) sits on a 3/4 acre lot with town water. Vendor will complete to suit or sell as is. (50% complete). A little "Sweat Equity" could mean a lot of savings. For details call today! MO-237
ROYAL CITY REALTY LTD.
LES TIMMONS 878-1156



COUNTRY LIVING \$220,000

In the heart of town! Privacy plus afforded by this spectacular .38 acre lot comprised of country gardens, 2 patio areas, mature trees and circular driveway. This 1-1/2 storey Cape Cod features excellent large rooms with windows galore! Two fireplaces, hardwood flooring, spacious lower level. To view call
CENTURY 21-GOLDEN REAL ESTATE
NOVA-SPARKS AUSTIN 878-8495



NOW REDUCED TO \$149,900 . . .

with super financing that allows this 3 bedroom townhouse to carry for under \$1,000.00 per month. Call now and find out more!
REALTY WORLD — W. J. McCRUDDEN REAL ESTATE INC.
DICK BELFORD 878-1133