

# MILTON'S USED CAR MARKET

## PRO DRIVING TIPS

NUMBER  
**9**

### TREATING TRUCKS WITH UNDERSTANDING



Harold Blue, Thorford, of Consolidated Freightways, has driven 4.3 million km and has 26 years of accident free driving.

Truck drivers are experienced and skilled drivers, and they have special challenges to contend with. Understanding these challenges will help prevent accidents.

When you come to a stop behind a truck, keep to the left of your lane so the driver can see you in his side mirror.

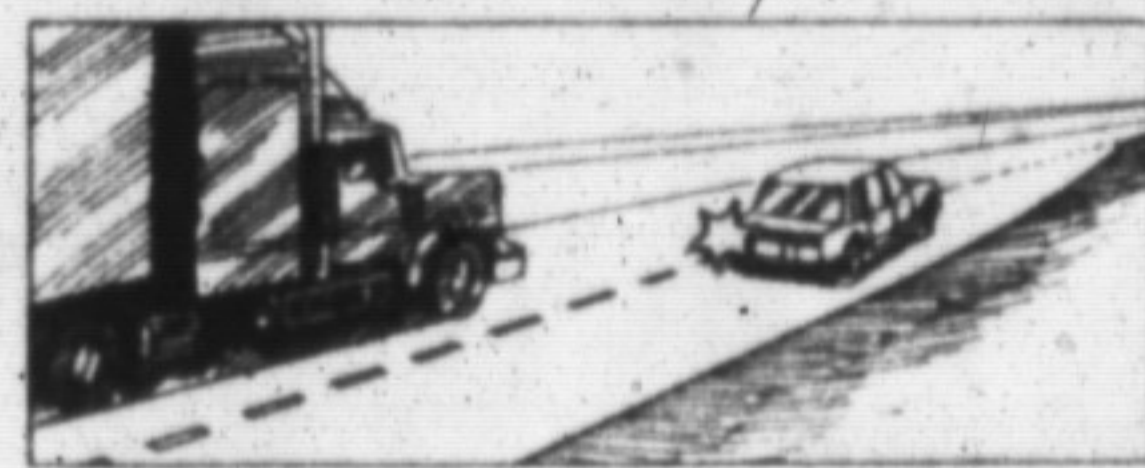


*Keep to the left when behind a truck*

Never tailgate, particularly trucks. The truck's size will almost totally block your view and you will have to rely on his brake lights for a signal that something is going on in front. At the same time you will be in one of the truck driver's blind spots.



*Leave roll-back room on a hill*



When entering an expressway, never pull in front of a truck without leaving adequate room. It can't stop on a dime and you could be the cause of a major accident.

For your free copy of the Ontario Trucking Association's *Partners in Safety* booklet, write to: Partners in Safety, Ontario Trucking Association, 555 Dixon Road, Rexdale, Ontario M9W 1H8. Phone: (416) 249-7401 Fax: (416) 245-6152

HUNT

SALES

LEASING

SERVICE

PARTS

1990 Chrysler Dynasty	4 dr.	white	\$15,495.00
1990 Chrysler 5th Ave.	4 dr.	Black	\$25,995.00
1990 Chev Cavalier	2 dr.	Blue	\$10,795.00
1989 Suzuki Side Kick JX		Gray	\$10,595.00
1988 Plymouth Voyager LE	Wagon V6	Blue	\$16,995.00
1988 Dodge Caravan LE	Wagon V6	Red	\$14,995.00
1988 Dodge Pick-up		Blue	\$ 8,895.00
1987 Dodge Pick-up		Gray	\$ 7,695.00
1987 Dodge Aries	4 dr.	Gray	\$ 6,995.00
1986 Pontiac Sunbird	Wagon	Blue	\$ 7,495.00
1984 Dodge Aries	2 dr.	Silver	\$ 4,895.00
1984 GMC Jimmy	4 X 4	Brown	\$ 7,995.00
	AS IS		
1984 Mazda 626	4 dr.	Gray	\$ 2,995.00
1979 Mercury Monarch	2 dr.	White	\$ 95.00

Gary Hunt  
President

Doug Meingrue  
Sales & Leasing

Dwain McIlwray  
Sales & Leasing

**THE DEALER THAT  
MAKES THE DEALS**

**876-2580**

**500 BRONTE ST. MILTON**

Hwy. 25	401
Martin St.	Main St.
Hwy. 25	Ontario St. (Hwy 25)
Derry Rd.	hospital

USED CARS	
89 Colt 200, silver	\$ 9,600.
89 Lancer, silver	\$11,942.
89 Ram P/up, tan	\$ 9,930.
89 Lancer, blue, loaded	\$13,700.
89 Honda Civic Si	\$11,995.
89 Nissan King Cab, air	\$ 9,995.
89 Honda Civic Si	\$10,595.
88 Chev Silverado, loaded	\$13,995.
88 Plymouth Sundance	\$ 7,495.
88 Celebrity, Blue	\$ 8,995.
88 Chrysler 5th Ave.	\$13,995.
88 Plymouth Sundance	\$ 7,495.
87 Caravan V6, air	\$11,595.
87 Mercury Grand Marquis, loaded	\$12,595.
87 Hyundai Stellar, brown	\$ 6,000.
87 Dodge Pickup, Cap	\$ 8,595.
86 Pontiac 6000	\$ 6,995.
86 Caravan	\$ 9,995.
86 600SE, 2 dr.	\$ 7,995.
86 5th Ave.	\$ 8,995.
86 Chev P/up, low kms	\$ 8,995.
85 Honda Prelude	\$ 7,995.
85 Reliant, air	\$ 5,995.
84 Charger	\$ 3,995.
84 Camaro, 2 dr.	\$ 5,995.
84 Aries Wagon	\$ 3,995.
84 Honda Accord	\$ 4,995.
AS IS	
79 Aspen Wagon	\$ 550.
78 Chev Malibu, air	\$ 795.

**MILTON CHRYSLER-DODGE**

**THIS WEEK'S SPECIAL!**

**1984 MUSTANG LX**

2 Door Hatchback, 4 spd., AM/FM Cassette, Certified. Stock #NA8928B

**\$4,495.00**

**NORTH END NISSAN**

**878-4137**

610 Martin Street

**1986  
CAPRICE  
ESTATE WAGON**

Maroon matching interior, loaded, 1 owner, all original, serviced at this dealership.  
Stock #8415A

**1989  
CAVALIER  
ESTATE WAGON**

Dark Blue with matching interior, loaded, 1 owner, all original, serviced at this dealership.  
Stock #7919A

Come See Les Deforest or Don Habkirk for details

**RICHARDSON CHEV-OLDS**

**"EXPECT THE BEST!"**

Hwy. 25 South at Derry Rd, Milton

876-2393  
826-1276

Extended Warranty Available

Finance Terms Available O.A.C.