

Make your move.

Worship the Lord with joy; come before him
with happy songs! Ps. 100

THE FIRST COMMUNITY CHURCH OF MILTON

presents
MARKUS PLAUM

on the
Roland Keyboard
an evening of Religious Music
at

St. George's Anglican Church
Guelph Line, North of Derry Road
Lowville, Ontario
8:00 p.m.

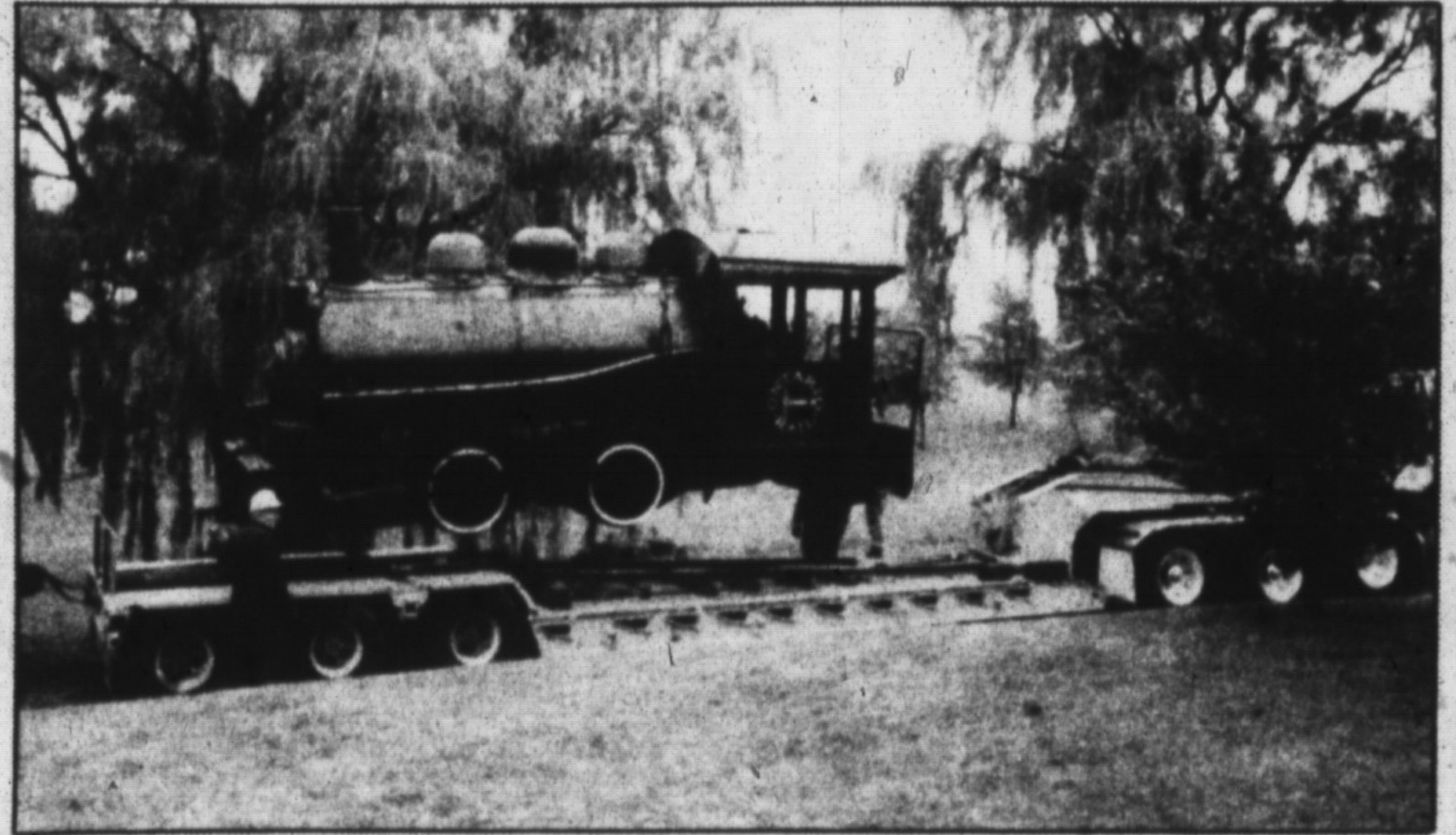
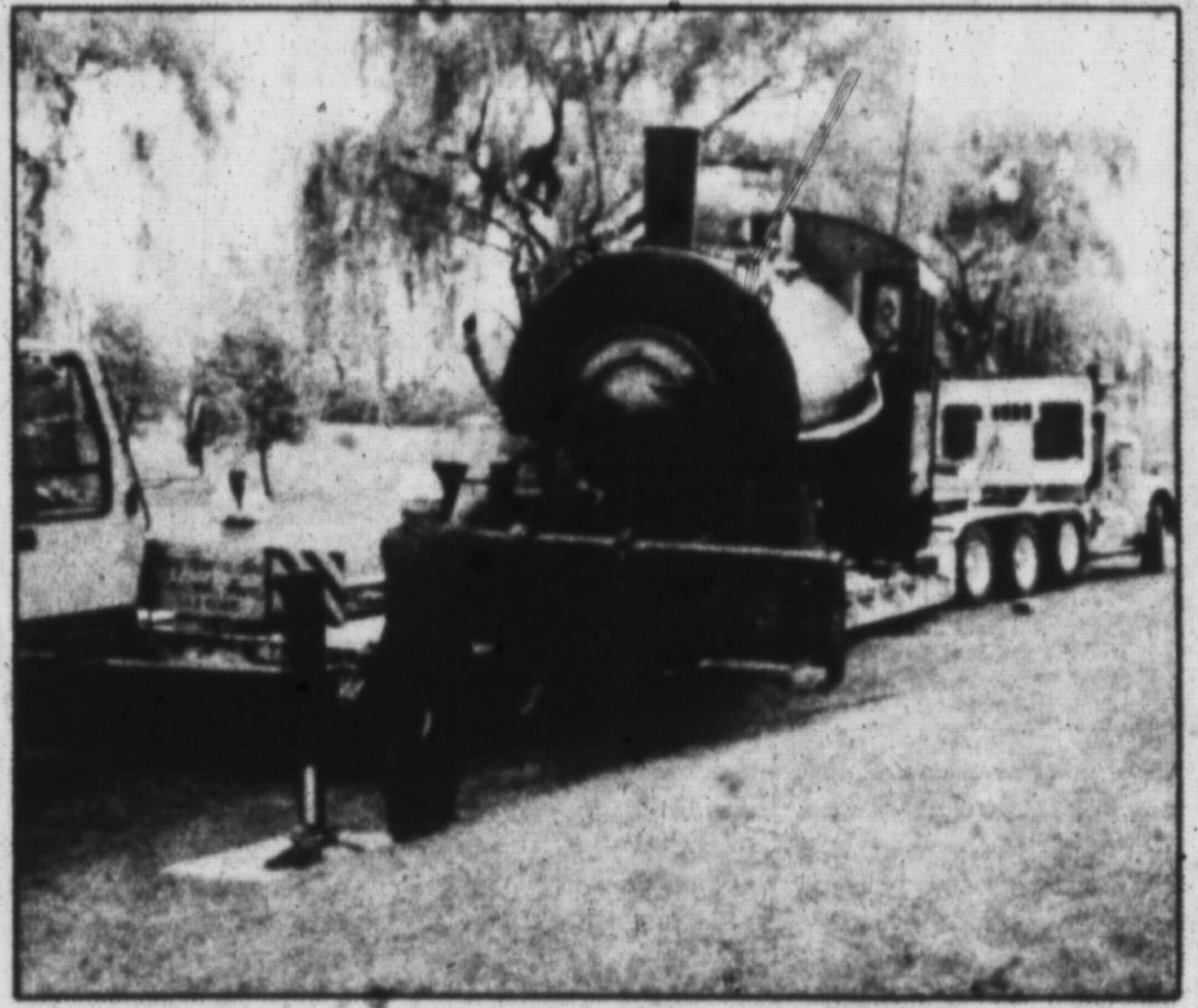


**Sunday,
November 11th, 1990**

ALL ARE WELCOME
A Free Will Offering
Refreshments will be served

Last ride

The familiar train engine that sat next to the Milton Chamber of Commerce office on Martin Street went to what may be its final resting place recently. Its owners had it moved to Iowa. In its place there will be an antique steam powered tractor being donated by the Ontario Agricultural Museum. As the Chamber office, housed in Milton's former train station, functions as a tourist information centre, the antique steam engine will help promote the annual Steam Era Reunion held at the fairgrounds as well as the museum.



RELIGIOUS SERVICE DIRECTORY

MILTON GOSPEL HALL

306 Ontario St. S.
878-2022

10:00 a.m. — Breaking Bread
11:45 a.m. — Sunday School
7:00 p.m. — Gospel Service

Wednesday 7:30 p.m.
Prayer and Bible Reading

"Ye were not redeemed with corruptible things as, silver & gold, but with the precious blood of Christ."

1 Peter 1:18



MILTON ALLIANCE CHURCH

2850 DERRY RD.

Pastor: Rev. Errol Rempel
Minister to Youth
Rev. Mark Kotchapaw
878-5664

9:45 a.m. Family Sunday School
11:00 a.m. Morning Worship Service
6:30 p.m. Evening Service
Nursery Facilities at all Services



First Community Church of Milton

Sunday Services and Church School 10 a.m.
Halton Centennial Manor Auditorium
Enter from Childs Drive

Sunday Evening Services 8:00 P.M.
Music Recital St. Georges Anglican Church Lowville

Everyone Welcome
A Caring Community
Pastor: Emrys Jenkins
Church Office: 878-0354
581 McGeachie Drive Unit #5
Milton, Ontario



MILTON BAPTIST CHURCH

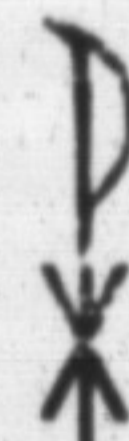
900 Nipissing Road
875-1626

CANADIAN BAPTIST FEDERATION

Pastor:
Rev. Terry Laing

Sunday, November 11, 1990
Church School: 9:45 a.m.
Morning Worship: 11:00 a.m.
Junior Church and Nursery

Wheelchair Accessible
A warm welcome awaits you!



HOLY ROSARY, ROMAN CATHOLIC PARISH

139 Martin St., Milton
878-6535
Mass Times
Sat. - 7:15 p.m. Sun. - 9:00 a.m., 10:30 a.m., 12 noon

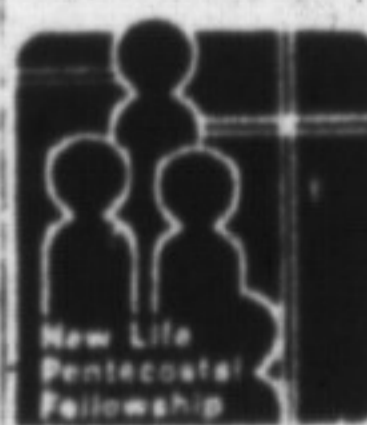
OUR LADY OF VICTORY

Milton Heights

Mass at 10:30 a.m. Sunday

ST. PETER'S CHURCH

9th Line Trafalgar
Mass at 9:00 a.m. Sunday
Revs. Earl Talbot, Donald Wilhelm,
Harold Bedford, S. J.



NEW LIFE PENTECOSTAL FELLOWSHIP

6620 THIRD LINE
(Just South of Thompson & Derry Rds.)
Phone 878-3358

Pastor: Rev. Don Forrest
Youth Pastor: Scott Couper
Sunday, November 11, 1990
9:45 a.m. — Sunday School
10:45 a.m. — Morning Worship
6:30 p.m. — Evening Service
Nursery Provided During Service



EPIPHANY LUTHERAN CHURCH

LUTHERAN CHURCH - CANADA

at Robert Baldwin Public School

180 Wilson Drive at Woodward

F. Schmitt, Vacancy Pastor 873-0264

9:00 a.m. — Worship Service

10 - 10:30 a.m. — Sunday School

Nursery Available

Contact: Andrew Willoughby Chairman

876-1278

For God so loved the world,
that he gave his only begotten son.

John 3:16

GRACEWAY BAPTIST CHURCH

Pastor: Walter H. Isaak
876-2298

We welcome you to meet with us at:

407 Pine Street
Next to Milton Library

10:00 a.m. — Sunday School
11:00 a.m. — Morning Worship
6:30 p.m. — Evening Service
Thursday 7:00 p.m. — Bible Study

Nursery and interpretation for the hearing impaired provided for all services.

"The Church That Cares For You!"

THE PRESBYTERIAN CHURCH IN CANADA KNOX, MILTON

170 Main St., E. 878-6066

Minister — The Rev. Noble Dean

Diocesan Minister —

Miss Terrie-Lee Hamilton

878-4379

REMEMBRANCE SUNDAY

NOVEMBER 11, 1990

9:30 a.m. — Adult Bible Study

9:45 a.m. — Junior-Senior High Bible Study

11:00 a.m. — Morning Worship

— Church School (Ages 3 to Grade 6)

— Nursery (Infants up to 2 years)

"All Welcome"

Please call 878-6066 to arrange for Wheelchair Access

GRACE ANGLICAN CHURCH

317 Main St., Milton, Ont.
878-2411

8:00 a.m. — Holy Eucharist
10:30 a.m. — Holy Eucharist

SALVATION ARMY MILTON

All church services held in
Royal Canadian Legion Hall -
Charles Street

Services held every Sunday
at 7:00 p.m.



ST. PAUL'S UNITED CHURCH

123 Main St. at James
878-8895

Rev. Robert Hyde
Rev. Elaine Longland

**SUNDAY,
NOVEMBER 11, 1990**

10:30 a.m. Worship Service

Sermon Title:

"Winning the war
but losing the battle"

Lessons:

Amos 5:18-24

Matthew 25:1-13



Nursery up to 2 years
Supervised care for
older children available
Sanctuary wheel chair accessible



PAID
PAID

**Jesus
paid it all**

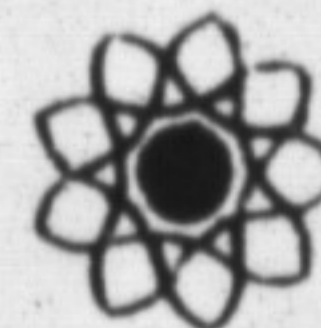
You are invited to
worship Him with us:

OMAGH CHURCH OF CHRIST (Milton)

1412 Britannia Rd. (at 4th Line)

875-3345
Bible Study — 9:45 a.m.
Worship — 11:00 a.m.
Mike Bolton - Minister
875-3345

"Where the Bible is preached"



BAHA'I FAITH
P.O. BOX 13
MILTON, L9T 2Y3
878-3098

"So far as ye are able,
ignite a candle of love in
every meeting."
— Abdu'l-Baha' —

Wed., Nov 7

7:30 pm

Thurs, Nov 8

12:30am/10:30am

3:30pm

Sun., Nov 11

5:30 pm

(pot luck)

Hugh Foster Hall

VISION TV, Cable 33

"6th International

Baha'i Convention"

BIRTH OF

BAHA'ULLAH

Holy Day celebration

For other activities or general
enquiries on the Baha'i Faith
call 878-3098