

RE/MAX

Miltowne Realty Corp.

"Locally owned and operated - #1 in Home Sales since 1983"
22 Ontario St. South 878-2365

Gail Pullen Sales Rep

878-2365 Office
878-0110 Res.
826-1030 Tor. Line



**NEW LISTING
WITH NEW FRIG.
& STOVE \$137,000.**
3 bdrm, 3 baths
assum \$90,000 at 11-
1/4% till Sept. 1992
Call Gail Pullen 878-
0110



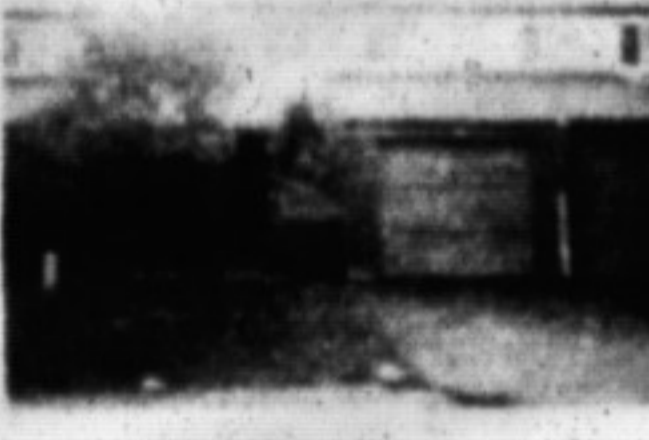
**PLEASURE TO SHOW
318 LAURIER AVE.
\$152,900.**

3 bdrms, 1-1/2 bath,
well decorated thruout,
new furnace & air
Enclosed private
garden.



**BRICK BUNGALOW
2 MINS. TO
MILTON MALL
\$168,900.**

Backing to park with 3
bdrm, hrdw & bdrim
fl., rec. rm & wet bar &
air



**VACANT
BACKING TO PARK
\$149,000.**

Carpets are clean, 3
bdrm, 1-1/2 bath,
fridge & stove



**VENDOR
TRANSFERRED
30 DAY POSSESSION
\$192,500.**

2 mins to James Snow
& 401. A1 cond.
neutral decor thruout
L-shaped rec. rm. w/
Franklin stove, 3 baths
window coverings plus
120 ft lot



**REDUCED
FOR QUICK SALE
\$169,000.**

New carpet, roof &
painted, 2 or 3 bdrm
on 211 ft lot, 5 mins
to downtown Milton
Over-sized garage
workshop.



**MAURICE
MILJOUR
878-2365 OFF.
876-4577 RES.
Associate Broker**



GEORGIAN — REDUCED

This beautiful centre hall plan offers up an executive home finished in grey tile, white trim and rose coloured broadloom. Located in a prestigious estate subdivision of Campbellville. This home will capture your heart with its warmth. It's a must to see! \$395,000. Contact listing agent, Maurice Miljour 878-2365.

REDUCED — WOODED LOT

An excellent location near Campbellville, close to 401 Exit and village shopping. This 3.6 acres is thick with trees and offers privacy on a paved road. The vendor will assist with financing. \$189,000. Contact listing broker Maurice Miljour.

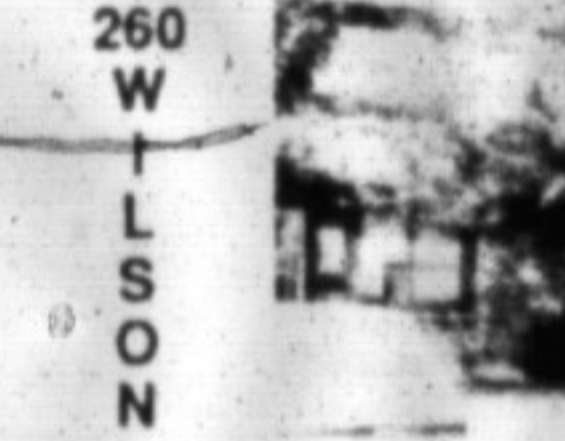


**FREDA
LAWRENCE
Sales Representative
OFFICE
878-2365
TOR. LINE 826-1030
RES. 878-4860**



VALUE + PLUS +

3 bdrm brick bungalow with air, vacuum, 3 baths, d
garage, lot 111 x 199. Reduced \$249,900.



260
W
I
L
S
O
N

COME
S
E
E
IT

FIRST TIME BUYERS ALERT!

3 bedroom townhouse in desirable area of town. For more information please call Freda Lawrence



**AUDREY
NEWELL
Associate Broker
Serving Milton & District
Since 1974 and for
many years to come.**

878-2365



FOR THE FAMILY THAT NEEDS EVERYTHING

A particular owner has everything done to perfection from basement up to the 4 big bedrooms in this spacious family home. Living room, dining room, family room with fireplace. Super finished rec. room and all the extras you would think of for your comfort and convenience. Not only that, it is immaculately clean and tastefully decorated. See your dream with Audrey



R
E
D
U
C
E
D
!

N
O
W!
\$
1
4
3,
5
0
0

VALUE FOR MONEY

Located in prestigious Sixteen Mile Creek area, this super executive townhouse with central air, spacious living room and dining room, big master bedroom, finished rec. room can be yours at a very reasonable cost. All in excellent condition and decorated in neutral earth tones. No multi-level stairways to tire you out. Garage. Large and private fenced back yard. See it with Audrey.

COUNTRY BUILDING LOTS

There's still time to build before Jan 1st, 1991! 125 ft x 183 ft (0.54 acres) beautifully treed with various types including several shag-bark hickories, Trillium gardens in Spring. Well already on property \$149,000. Owner may hold advantageous mortgage. Call Audrey.

1.4 acres in the lovely village of Moffatt. Part of an area of prestigious country homes. This lot slopes up from the road enabling you to build on a knoll. \$159,900. owner may hold advantageous mortgage. Call Audrey.



TOAST YOUR TOOTSIES

This spacious bungalow has upgraded everything! Central air, central vac, high efficiency gas furnace, dishwasher, garage door opener, etc., etc., and for those cold winter evenings a rec. room with a beautiful brick fireplace just waiting to warm you. There is also a walkout from the basement den. Call Audrey for more info.



**JEFF WRIGHT
SALES
REPRESENTATIVE
Office : 878-2365
Tor: 826-1030
Res: 878-5110**



THIS IS A NATURAL FOR THE RANCH MINDED FAMILY
Custom built raised bungalow overlooks 64+ acres of farmland & related buildings. One of the best views in this area. Located in the Milton/Burlington boundary just east of Kipling. Must be seen to be appreciated! \$999,000.00. For more details, call my office today Ask for JEFF WRIGHT.



IT'S COLD OUTSIDE

But cozy inside this upgraded home featuring modern kitchen, 2 large bed rooms, 2 bathrooms, recreation room and garage. Move in condition \$172,900.00. Today is the day to see this. Ask for JEFF WRIGHT.



IDEAL LOCATION...

Only a stroll to schools, shops and transportation. Dorset Park, 4 bdrms, 2 full baths, finished basement with wood stove, inground pool, private yard with built on sunroom. Price \$209,000.00. Call JEFF WRIGHT for a personalized tour.

TAKE THE LANDLORD OFF YOUR PAYROLL!! TOWN HOMES FOR SALE —

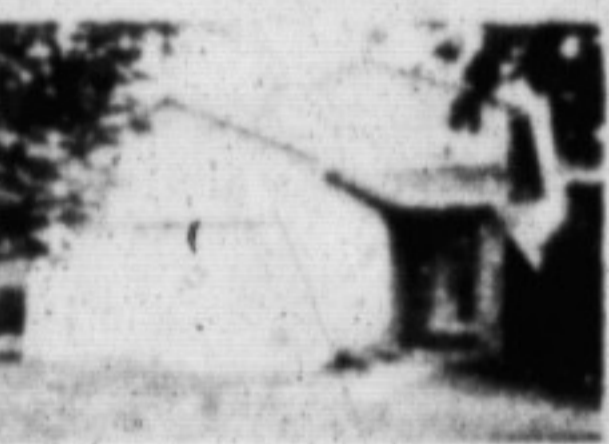
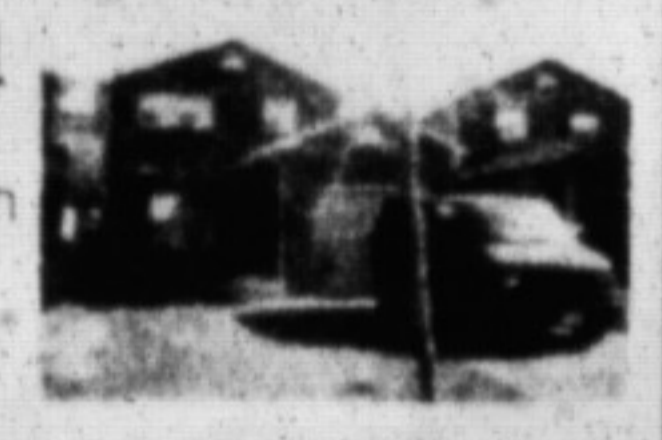
BRONTE MEADOWS AREA Multi-level, completely finished, separate dining room, R2,000 windows, interlocking brick patio & more \$149,000.00.
DORSET PARK 2 levels & finished basement, elegant decor, parquet flooring, use of pool & recreation centre.
BOTH OF THESE FINE HOMES ARE A MUST TO SEE. TOP QUALITY THROUGHOUT. ASK FOR JEFF WRIGHT TO VIEW THESE TODAY.



**DOUG J.
BUTSON
Sales Rep
Office 878-2365**

503 ROSEHEATH

Investors dream,
excellent resale area with
A-1 tenant. Buy now
in the \$170's.



20 LAURIER AVE.
M.F. fam. rm. with corner
F/P; master ensuite,
brass/pine accents; 2
extra bdrms., 3 pc.
appliances on lower level.
Asking \$211,000.

**SUN. OPEN HOUSE
2-4 P.M.**



**FAST POSSESSION.
INCOME POTENTIAL
ESCARPMENT
AND TREED**
with drilled well.
\$158,000.

ALSO COMMERCIAL SALE or LEASE
7500 sq. ft. Auto Service Centre @ \$890,000 or
\$10/sq. ft.
10,000 sq. ft. Main St. Apts. & Offices @
\$850,000. or \$7/sq. ft.



**RON
MacNEIL
SALES REP
Office: 878-2365
Res: 878-0198**



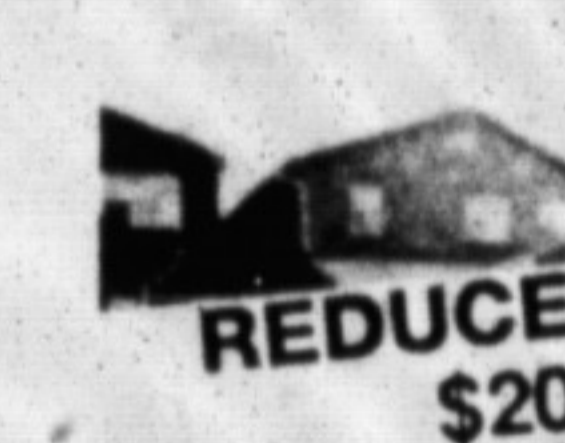
**SOLD
REDUCED TO
\$149,900.**



VILLAGE OF CAMPBELLVILLE
Begin life together in this older 4 bedroom 1 1/2
storey home in Campbellville. Tie the knot on a
super BUY! Lower than you would think. For a
showing of this home call RON MacNEIL.



TIMBERLEA
Take a look at the reasons why! You should
move into this fine 4 bedroom backspl. Close to
schools, shopping & recreation facilities. For a
personal viewing please CONTACT RON
MACNEIL 878-2365. \$213,900.



**REDUCED TO SELL
\$204,900.**

DOGGONE GOOD DEAL!!
- Small kennel room in basement
- New high efficiency furnace (August 1990)
- New central air (August 1990)
- 3 bedroom, 2 car garage, 3 bathrooms
- Breakfast area
- Large deck in back yard
Pet friendly price of just \$219,900. Call for more
frisky facts. RON MacNEIL 878-2365.

CAMBRIDGE HOMES
Built 1990 - \$320,000. Backs onto
pond, 4 bedrooms.
\$159,900. - 3 bedrooms, assumable
mortgage \$1333,000. 12 3/4% till
1995.
\$169,900. - 3 bedrooms, new home
Oct./90.
\$227,000. - 4 bedrooms, 2 years old.



**MIKE
MORGAN**
Associate Broker
878-2365
826-1030
(Tor. Line)
878-8093
(Res.)



LOTS OF LAND
If an upgraded older home with
character interests you, then look no
more. New windows, beautiful Oak
kitchen, maintenance free exterior, 2
verandahs and a 62' x 282' lot on the
edge of town. **\$219,900.**



GREAT VALUE FOR YOUR \$
Check your list, this clean 1630 sq. ft.
home offers 3 huge bedrooms, 3
washrooms, a main floor family room
and a double garage. Compare for
value NOW \$195,900.



**235 BRONTE STREET
UNIT #40
\$129,900.
CALL MIKE**



**317 KINGSLEIGH
CRT.
\$164,900.**



TRUE VALUE
For the growing family this 4 bedroom,
2 bathroom home offers a finished rec
room, screened in sunroom and a
large lot. Call to see. **\$184,900.**



HOME OF DISTINCTION
Better than new inside and out.
Upgrades include custom European
kitchen, French doors, Red Oak
hardwood, Georgian baseboards and
high quality broadloom. Central air and
central vacuum are only a few of the
many extras and comforts. Call Mike
\$294,900.



QUIET NEIGHBOURHOOD
In this spacious 4 bedroom brick
backspl. in desirable Timberlea. A family
room with fireplace and walkout, two full
bathrooms and hardwood floors make
this a perfect family home. **\$249,900.**



KITCHEN SHOWROOM
Like nothing you've seen. This
expanded dream kitchen has a
beautiful 3 bedroom side-split attached
and offers additional comforts of
family room with fireplace, rec. room
with bar and a sauna. Also an
inground pool and backing onto open
space. Call Mike **\$239,900.**