

# RE/MAX

## Miltowne Realty Corp.

"Locally owned and operated - #1 in Home Sales since 1983"  
22 Ontario St. South 878-2365

### Gail Pullen Sales Rep

878-2365 Office  
878-0110 Res.  
826-1030 Tor. Line



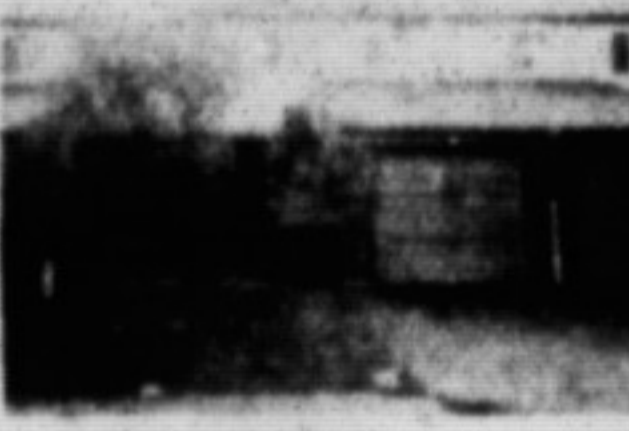
**NEW LISTING  
WITH NEW FRIG.  
& STOVE \$137,000.**  
3 bdrms, 3 baths  
assum. \$90,000 at 11  
1/4% till Sept. 1992  
Call Gail Pullen 878-  
0110.



**PLEASURE TO SHOW  
318 LAURIER AVE.  
\$152,900.**  
3 bdrms, 1-1/2 bath,  
well decorated thru-out,  
new furnace, & air.  
Enclosed private  
garden.



**BRICK BUNGALOW  
2 MINS. TO  
MILTON MALL  
\$168,900.**  
Backing to park with 3  
bdrm., hrdw. & bdrim.  
fl., rec. rm & wet bar &  
air.



**VACANT  
BACKING TO PARK  
\$149,000.**  
Carpets are clean, 3  
bdrm., 1-1/2 bath,  
fridge & stove.



**VENDOR  
TRANSFERRED  
30 DAY POSSESSION  
\$192,500.**  
2 mins. to James Snow  
& 401. All cond.  
neutral decor thru-out.  
L-shaped rec. rm. w/  
Franklin stove, 3 baths,  
window coverings plus  
420 ft. lot.



**REDUCED  
FOR QUICK SALE  
\$169,000.**  
New carpet, roof &  
painted; 2 or 3 bdrm  
on 211 ft. lot. 5 mins.  
to downtown Milton.  
Oversized garage  
workshop.



**MAURICE  
MILJOUR  
878-2365 OFF.  
876-4577 RES.  
Associate Broker**



### GEORGIAN — REDUCED

This beautiful centre hall plan offers up an executive home finished in grey tile, white trim and rose coloured broadloom. Located in a prestigious estate subdivision of Campbellville, this home will capture your heart with its warmth. It's a must to see! \$395,000. Contact listing agent, Maurice Miljour 878-2365.

### REDUCED — WOODED LOT

An excellent location near Campbellville, close to 401 Exit and village shopping. This 3.6 acres is thick with trees and offers privacy on a paved road. The vendor will assist with financing. \$189,000. Contact listing broker Maurice Miljour.



**FREDA  
LAWRENCE  
Sales Representative  
OFFICE  
878-2365  
TOR. LINE 826-1030  
RES. 878-4860**



### VALUE + PLUS +

3 bdrm brick bungalow with air, c/vacuum, 3 baths, d. garage, lot 111 x 199. Reduced \$249,900.



260  
W  
I  
L  
S  
O  
N

COME  
S  
E  
E  
I  
T

### FIRST TIME BUYERS ALERT!

3 bedroom townhouse in desirable area of town. For more information please call Freda Lawrence.



**AUDREY  
NEWELL  
Associate Broker  
Serving Milton & District  
Since 1974 and for  
many years to come.**

878-2365



### FOR THE FAMILY THAT NEEDS EVERYTHING

A particular owner has everything done to perfection from basement up to the 4 big bedrooms in the spacious family home. Living room, dining room, family room with fireplace. Super finished rec. room and all the extras you would think of for your comfort and convenience. Not only that, it is immaculately clean and tastefully decorated. See your dream with Audrey.



R  
E  
D  
U  
C  
E  
D  
!

N  
O  
W!  
\$  
1  
4  
3,  
5  
0  
0

### VALUE FOR MONEY

Located in prestigious Sixteen Mile Creek area, this super executive townhouse with central air, spacious living room and dining room, big master bedroom, finished rec. room can be yours at a very reasonable cost. All in excellent condition and decorated in neutral earth tones. No multi-level stairways to tire you out. Garage. Large and private fenced back yard. See it with Audrey.

### COUNTRY BUILDING LOTS

There's still time to build before Jan. 1st, 1991! 125 ft x 183 ft. (0.54 acres) beautifully treed with various types including several shag-bark hickories. Triliums galore in Spring. Well already on property \$149,000. Owner may hold advantageous mortgage. Call Audrey.

1.4 acres in the lovely village of Moffatt. Part of an area of prestigious country homes. This lot slopes up from the road enabling you to build on a knoll. \$159,900; owner may hold advantageous mortgage. Call Audrey.



### TOAST YOUR TOOTSIES

This spacious bungalow has upgraded everything! Central air, central vac., high efficiency gas furnace, dishwasher, garage door opener etc., etc. and for those cold winter evenings a rec. room with a beautiful brick fireplace just waiting to warm you. There is also a walkout from the basement den. Call Audrey for more info.



**JEFF WRIGHT  
SALES  
REPRESENTATIVE  
Office : 878-2365  
Tor: 826-1030  
Res: 878-5110**



**THIS IS A NATURAL FOR THE RANCH MINDED FAMILY**  
Custom built raised bungalow overlooks 64+ acres of farmland & related buildings. One of the best views in this area. Located in the Milton/Burlington boundary just east of Kildee. Must be seen to be appreciated! \$999,000.00. For more details, call my office today. Ask for JEFF WRIGHT.



### IT'S COLD OUTSIDE

But cozy inside this upgraded home featuring modern kitchen, 2 large bedrooms, 2 bathrooms, recreation room and garage. Move in condition! \$172,900.00. Today is the day to see this. Ask for JEFF WRIGHT.



### IDEAL LOCATION...

Only a stroll to schools, shops and transportation. Dorset Park, 4 bdrms., 2 full baths, finished basement with wood stove, inground pool, private yard with built on sunroom. Price \$208,000.00. Call JEFF WRIGHT for a personalized tour.

### TAKE THE LANDLORD OFF YOUR PAYROLL!!

**TOWN HOMES FOR SALE —**  
BRONTE MEADOWS AREA Multi-level, completely finished, separate dining room, R2,000 windows, interlocking brick patio & more. \$149,000.00.  
DORSET PARK 2 levels & finished basement, elegant decor, parquet flooring, use of pool & recreation centre.  
BOTH OF THESE FINE HOMES ARE A MUST TO SEE. TOP QUALITY THROUGHOUT. ASK FOR JEFF WRIGHT TO VIEW THESE TODAY.

### DOUG J. BUTSON

Sales Rep  
Office 878-2365

### 503 ROSEHEATH

Investors dream,  
excellent resale area with  
A-1 tenant. Buy now  
in the \$170's.



### 20 LAURIER AVE.

M.F. fam. rm. with corner  
F/P., master ensuite,  
brass/pine accents; 2  
extra bdrms., 3 pc.  
appliances on lower level.  
Asking \$211,000.

SUN. OPEN HOUSE  
2-4 P.M.



**FAST POSSESSION.  
INCOME POTENTIAL**

### ESCAPMENT AND TREED

with drilled well.  
\$158,000.

### ALSO COMMERCIAL SALE or LEASE

7500 sq. ft. Auto Service Centre @ \$890,000 or \$10/sq. ft.  
10,000 sq. ft. Main St. Apts. & Offices @ \$850,000. or \$7/sq. ft.

### RON

**MacNEIL**  
SALES REP  
Office: 878-2365  
Res: 878-0198



### VILLAGE OF CAMPBELLVILLE

Begin life together in this older 4 bedroom 1 1/2 storey home in Campbellville. Tie the knot on a super BUY! Lower than you would think. For a showing of this home call RON MacNEIL.



### TIMBERLEA

Take a look at the reasons why! You should move into this fine 4 bedroom backsplit. Close to schools, shopping & recreation facilities. For a personal viewing please CONTACT RON MACNEIL 878-2365. \$213,900.



### DOGGONE GOOD DEAL!

- Small kennel room in basement
- New high efficiency furnace (August 1990)
- New central air (August 1990)
- 3 bedroom, 2 car garage, 3 bathrooms
- Breakfast area
- Large deck in back yard

Pet friendly price of just \$219,900. Call for more frisky facts. RON MacNEIL 878-2365.

### CAMBRIDGE HOMES

**Built 1990 — \$320,000.** Backs onto pond, 4 bedrooms.  
**\$159,900.** — 3 bedrooms, assumable mortgage. \$1333,000. 12 3/4% till 1995.  
**\$169,900.** — 3 bedrooms, new home Oct./90.  
**\$227,000.** — 4 bedrooms, 2 years old.

### MIKE MORGAN

Associate Broker  
878-2365  
826-1030  
(Tor. Line)  
878-8093  
(Res.)

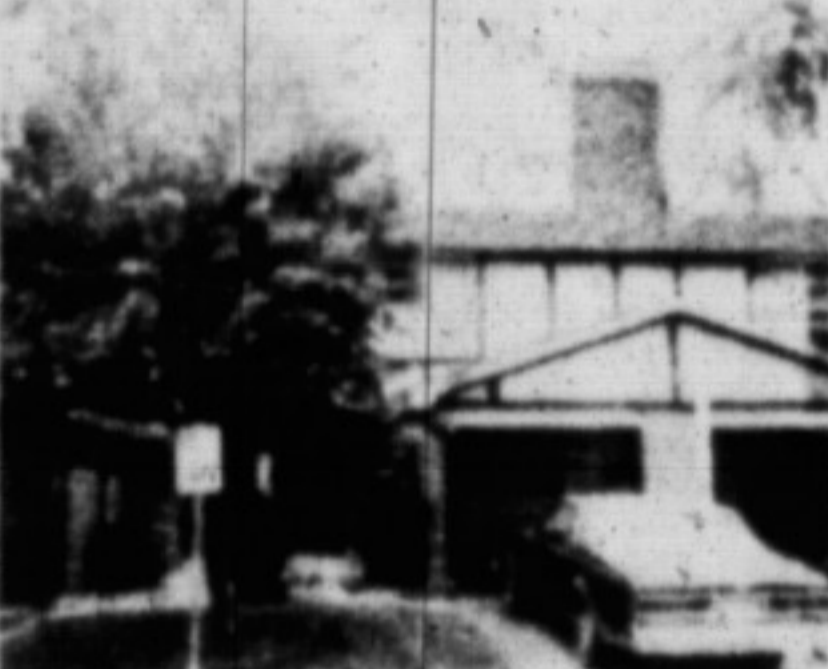


### LOTS OF LAND

If an upgraded older home, with character interests you, then look no more. New windows, beautiful Oak kitchen, maintenance free exterior, 2 verandahs and a 62' x 282' lot on the edge of town. \$219,900.



**GREAT VALUE FOR YOUR \$**  
Check your list, this clean 1630 sq. ft. home offers 3 huge bedrooms, 3 washrooms, a main floor family room and a double garage. Compare for value NOW \$195,900.



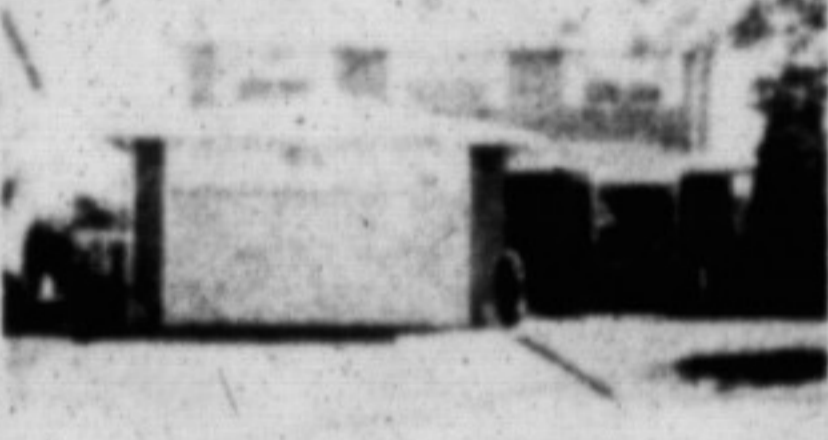
**235 BRONTE STREET  
UNIT #40  
\$129,900.  
CALL MIKE**



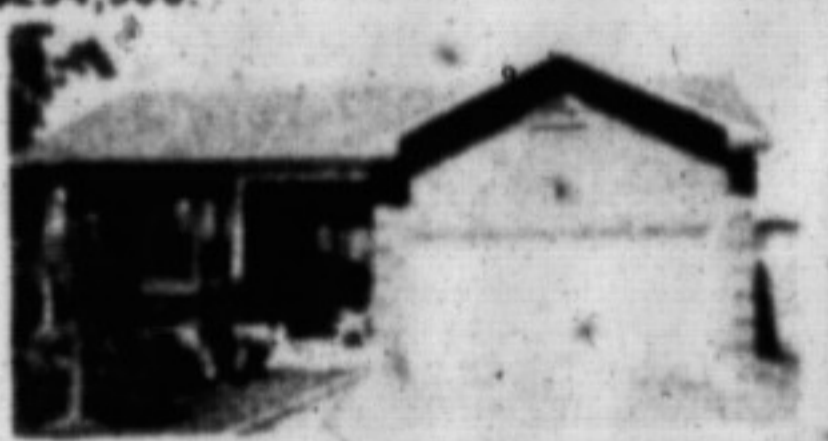
**317 KINGSLEIGH  
CRT.  
\$164,900.**



**TRUE VALUE**  
For the growing family the 4 bedroom, 2 bathroom home offers a finished rec. room, screened in sunroom and a large lot. Call to see. \$184,900.



**HOME OF DISTINCTION**  
Better than new inside and out. Upgrades include custom European kitchen, French doors, Red Oak hardwood, Georgian baseboards and high quality broadloom. Central air and central vacuum are only a few of the many extras and comforts. Call Mike \$294,900.



**QUIET NEIGHBOURHOOD**  
In this spacious 4 bedroom brick backsplit in desirable Timberlea. A family room with fireplace and walkout, two full bathrooms and hardwood floors make this a perfect family home. \$249,900.



**KITCHEN SHOWROOM**  
Like nothing you've seen. This expanded dream kitchen has a beautiful 3 bedroom sleepout attached and offers additional comforts of family room with fireplace, rec. room with bar and a sauna. Also an inground pool and backing onto open space. Call Mike \$239,900.