

# Dateline

## Friday Oct. 26-28

The Mohawk Fall Fair, a tradition at Mohawk Raceway in Campbellville, will start at 6 p.m. each night. The Limeridge Fiddlers, clowns, animal characters and stallions will entertain visitors. Grandstand admission is \$3.25 while the Clubhouse price is \$6.50. Children aged 12 and under will be admitted free.

## Saturday Oct. 27

The Recreation Committee for Special Needs will hold its second annual bazaar and bake sale at the Acton Arena in Prospect Park from noon to 4 p.m. Donations of items would be appreciated. Call Shirley at 875-1531.

The Women's Association of Nasagaweya Presbyterian Church will hold a bazaar, tea and bake sale from 1:30 to 3 p.m. A draw will be held for a quilt. The church is located on No. 15 Sideroad, just east of Guelph Line. Everyone is welcome. Bethel United Church on Trafalgar

Road in Drumquin will hold a bazaar from 2 to 4 p.m. The event will include baked goods, crafts, white elephant table, flowers and tea table.

## Sunday Oct. 28

The Halton-Peel Branch of the Ontario Genealogical Society will meet at Brampton's Chinguacousy Library, 150 Central Park Dr., in the second-floor meeting room at 2 p.m. Visitors are welcome. Linda Twitchell of the Halton Region Museum will speak about the Halton Heritage Collection.

## Tuesday Oct. 30

Friends of the Halton Region Museum will meet at the museum at 7:30 p.m. The guest speaker will be Eric Connelly from LACAC.

Milton District High School will hold University Evening from 7 to 8:30 p.m. Senior students and parents are asked to attend the special program on choosing, applying and preparing for university. Application forms and information packages will be distributed. R.S.V.P.

## UNIVERSITY EVENING MILTON DISTRICT HIGH SCHOOL TUES. OCT. 30/90 7:00-8:30 p.m.

Senior/O.A.C. students and parents are asked to attend this special program on Choosing, Applying and Preparing for University. Application forms and information packages will be distributed to applicants who are applying to university for September 1991. Other students and parents are also welcome to attend.

To help us in planning RSVP to M.D.H.S. Guidance Department by Monday, October 29th or sooner!

878-2839

to the school's guidance department at 878-2839.

## Wednesday Oct. 31

Senior Citizen Club 88 will hold a euchre and lunch at the Royal Canadian Legion hall on Charles Street at 1 p.m. The cost is \$1.50. Everyone is welcome.

## Thursday Nov. 1

The Halton Access to Permanent Housing Committee will hold a community forum to identify barriers in affordable housing and develop actions for change. The event will be held at Georgetown Cultural Centre, 9 Church St., in Georgetown from 8 to 10 p.m. R.S.V.P. to 853-3310.

The Women of Halton Action Movement (WHAM) will meet at 7:30 p.m. Anyone interested is welcome. For further details and location, call Linda at 825-3999.

The Milton and District Chapter of the Canadian Federation of University Women will present Bob Hart of the Halton Regional Health Department who will discuss developing a personal environmental action plan. The event, open to the public, will be held at Hugh Foster Hall at 8 p.m. For more information, call Nova Sparks-Austin at 878-8495.

The Living with Cancer Group will meet at the Milton Branch of the Canadian Cancer Society, 751 Main St. E., from 7:30 to 9 p.m. Group discussions provide emotional support and practical guidance to patient, families and friends. For more information, call 878-5228 or 878-1876.

## Saturday Nov. 3

St. Paul's United Church will hold a gospel concert and hymn sing at 7:30 p.m. Tickets cost \$5 and can be purchased from choir members or at

the door. Children under 12 years of age will be admitted free.

Boston Presbyterian Church on Third Line will hold a bazaar from 10:30 a.m. to 1 p.m. A hot lunch will be served for \$3.50. Baking, crafts, knitting, silent auction and art sale will all be part of the event.

## Sunday Nov. 4

The Catholic Women's League will hold a bazaar at Holy Rosary School on Martin Street from 9 a.m. to 3 p.m. A wide variety of crafts, candy, baked goods and religious articles will be for sale. Events will include a penny sale with items donated by local businesses.

## Monday Nov. 5

The Bishop Reding Parent Association will meet at 7:30 p.m. in the Resource Centre at Bishop Reding Secondary School.

41—The Canadian Champion, Friday, October 26, 1990

## RAYMOND'S

FOR YOUR DINING PLEASURE  
GRAND PIANO LOUNGE  
PRESENTS

**Laurie Walker**  
Friday - Saturday, 7:00 P.M.  
Remember to call us  
for your  
SEASONAL PRIVATE OR  
BUSINESS PARTIES  
478 STEELES AVE. E.  
875-1491

## Goldo RESTAURANT

Park'n Dine

A Chain of Stylish Buffet Restaurants  
• Daily Buffet • Large Selection of  
Superb & Authentic Chinese Cuisine •  
Tropical and Exotic Drinks • Fully  
licensed Under L.L.B.O.

878-8814

459 Main Street, Milton  
(Corner of #25 Highway & Main)

FAST & FREE DELIVERY IN LOCAL  
AREAS AFTER 5:00 PM FOR FOOD  
ORDERS OVER \$15.00. 10% DIS-  
COUNT ON PICK UP ORDERS OVER  
\$15.00 (CASH ONLY)

Mon - Thurs 11:30am - 11:00 pm  
Fri - Sat 11:30 am - 12:30 pm  
Sun 11:30 - 10:00 pm



Make your  
Halloween Party  
special.

We have Halloween party  
goods, costumes and  
accessories at our Boo  
Bazaar display.

Hallmark

When you care enough  
to send the very best!

MILTON MALL  
875-3776

## FLORIDA CONDOS JAMAICA

from \$329.00  
(each of 4)  
including condo, car care!

from \$449.00  
(each of 2)  
including accomodation & air

## Our Feature This Week MANZANILLO

from \$799.00 all inclusive  
For a warm, dry climate, with constant breezes -  
Lots to do, or nothing - except to enjoy.

COME SEE US!

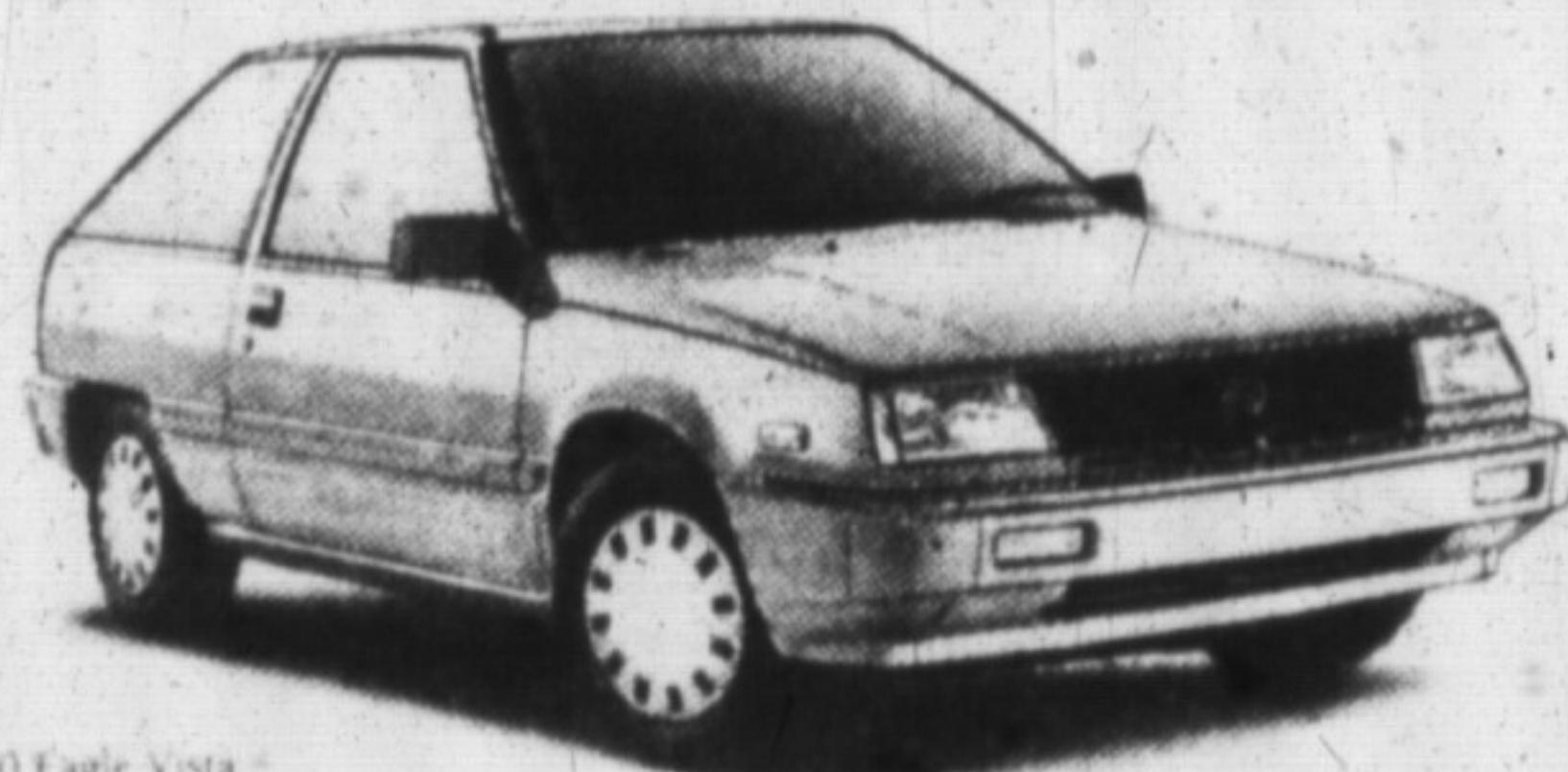
## Bruce Hood MILTON Travel

Business Travel  
875-1010

16 Martin St. Milton  
- Serving Travellers Since 1961 -

Vacation/Cruises  
878-2886

# Get early GST savings on all Jeep and Eagle vehicles.



1990 Eagle Vista



1990 Jeep Cherokee Limited

Now's the time to get into an  
Eagle price leader with \$350  
GST savings\* plus low financing  
or up to \$750 cashback\*\*

Add up the savings  
on our entire lineup.

It's your opportunity to buy the  
legendary sport utility 4x4 with  
up to \$1,000 GST-savings\* plus low  
financing or up to \$1,000 cashback\*\*

UP TO **\$1,000** GST SAVINGS\* **Plus** CHOOSE **10.9%** FINANCING OVER 48 MONTHS\*\* OR UP TO **\$1,000** CASHBACK\*\*

\*GST savings based on 1990 models. Amount of GST savings is based on vehicle list price. GST savings \$1,000. Cashback limited to other Chrysler \$700. See Dealer for details. \*\*Cashback available as an alternative to financing and is a limited time offer. These offers are exclusive and apply to purchase for personal use only. Cashback \$200-190 Vista \$750-1900 Vista \$750-1900 Cherokee. Cashback buyers choosing a reduced financing rate in lieu of rebate or cashback vehicles are eligible for 10.9% financing over 48 months term. See Dealer for details. Taxable items are subject to Chrysler Canada Ltd. approval of purchase and delivery as per Chrysler Canada Ltd. Dealers must have a minimum 10% down payment on new vehicle. Financing offers exclude fleet orders and other lease vehicles. The offers apply and replace any and all previous offers and may not be combined. Example: If the vehicle financed is \$12,000 on the purchase of an engine vehicle for a term of 48 months, the financing rate would be 10.9% APR with a monthly payment of \$251.97. The total cost of financing is \$2,302.56. Assuming a rebate of \$1,000 if the alternative should you choose a reduced financing rate instead of cash rebate, registration fees and the province of the rebate has been included in calculating the cost of financing in order to arrive at an effective interest rate. In the example given, the cost of financing, including the rebate to dealer, would be \$1,302.56 resulting in an effective interest rate of 10.87%. Buyers must pay for transportation, taxes and other fees such as registration. Note: lease vehicles are eligible for cash rebate only. Special leasing rates, as an alternative to rebates, are available on selected models. See Dealer for details.

Jeep and Eagle Dealers of Ontario

**Milton Jeep/Eagle**  
81 Ontario Street, Milton, Ontario  
878-8877 Sales  
878-8808 Service 842-2544 Toronto Line

