

NOW GO BRINGS YOU YOUR FAVOURITE STATIONS MORE OFTEN.

MORE MILTON-MISSISSAUGA-TORONTO WEEKDAY TRAIN SERVICE EFFECTIVE OCTOBER 29

Our weekday rush-hour service on the Milton rail line has always been a hit with GO riders. In fact, it's been so popular we've had requests to play it more often.

So starting Monday, Oct. 29, we're adding midday and evening times to our schedule... almost doubling our service!

Now you don't have to drive to a Lakeshore station to take GO outside rush hour. If you live anywhere near the Milton, Meadowvale, Streetsville, Erindale, Cooksville, Dixie or Kipling GO stations, it means we're really playing your song. Take GO to class or to shop. Enjoy the downtown entertainment. GO to the Dome. New improved service.

Money-saving ticket options too. At GO Transit, we're in tune with your needs.

Call GO Information: Toronto 665-0022, Milton 853-0572. Hearing-impaired devices 1-800-387-3652.



Anniversary hymn sing at St. Paul's

Gospel tunes will be heard loud and clear at St. Paul's United Church next month when the senior choir presents an old-fashioned hymn sing.

The concert, held as part of the church sanctuary's 100th anniversary, will take place Saturday, Nov. 3 at 7:30 p.m.

The family event will include gospel arrangements by the choir which will invite the audience to join in with them. In keeping with the anniversary theme, the choir will wear period-costumes.

Tickets cost \$5 and can be obtained by choir members or at the door. Children under 12 will be admitted free.

At the 10:30 a.m. service Sunday, Nov. 4, St. Paul's choir and the celebration committee will host a choir reunion. Former and current choir members will perform together.

The morning service will also celebrate the 138th anniversary of the congregation and Rev. Bill Sparling with be the guest speaker.

A reception for the congregation and visiting choir members will be held at Graham Hall following the service.

French group reactivates Halton chapter

Canadian Parents for French has reactivated the Halton chapter that folded two years ago.

The group is geared toward bolstering French language skills among students in the public school system.

On Oct. 10 the group sponsored an open house at the Halton Board of Education head office in Burlington to enlist the support of past members and draw out new ones.

"We are looking for input and direction from those who join, and also are going to ask all the home and school associations to send a representative to our executive meetings," said Jan Fowler, acting president for CPF Halton.

For more information, contact the Halton Board of Education at 878-8451.

Ski swap

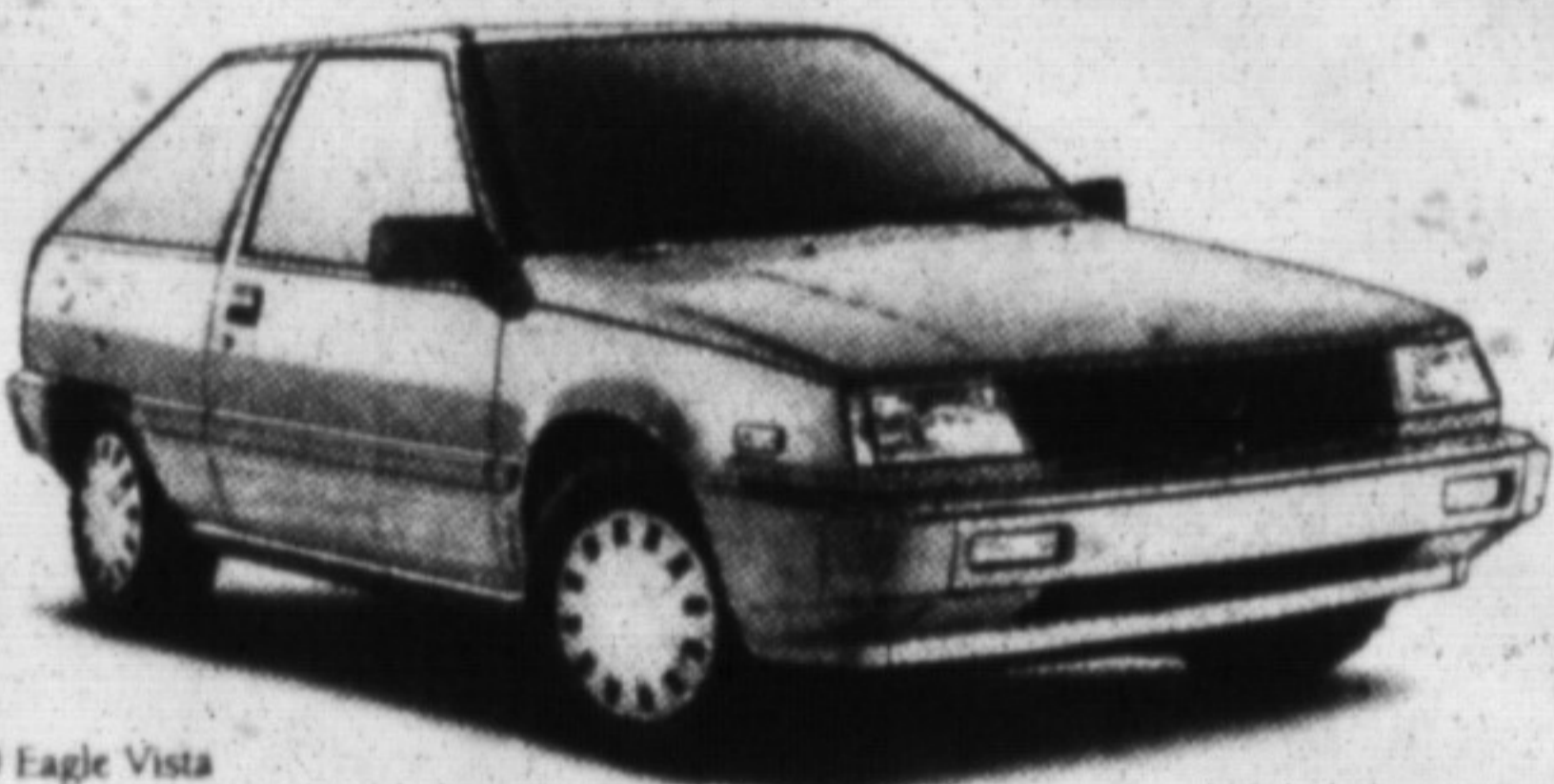
It's out with the old and in with the new for skiers at the Halton Cross-Country Ski Club's annual ski swap.

The event provides an opportunity to sell used equipment and buy items at a reasonable price.

Equipment registration takes place from 9 to 10:30 a.m. on Sunday, Nov. 11. The sale continues from 10:45 a.m. to 3 p.m.

The sale will take place at Nelson High School, 4181 New St., Burlington.

Get early GST savings on all Jeep and Eagle vehicles.



1990 Eagle Vista



1990 Jeep Cherokee Limited

Now's the time to get into an Eagle price leader with \$350 GST savings* plus low financing or up to \$750 cashback**

Add up the savings on our entire lineup.

It's your opportunity to buy the legendary sport utility 4x4 with up to \$1,000 GST savings* plus low financing or up to \$1,000 cashback**

UP TO **\$1,000** GST SAVINGS* **Plus** CHOOSE **10.9%** FINANCING OVER 48 MONTHS** **OR UP TO \$1,000** CASHBACK**

*GST savings period begins Oct. 1, 1990 and is terminated by Chrysler Canada and applies to new in stock 1990 and 1991 models. Amount of GST savings is based on vehicle line averages. GST savings \$1,000 Cherokee Limited, all other Cherokees \$750. See Dealer for details. **Cashback available as an alternative to financing and up to limited time offer. These offers are mutually exclusive and apply to purchase for personal use only. Cashback \$500/1991 Vista, \$750/1990 Vista, \$500/1991 Cherokee, \$1,000/1990 Cherokee. Qualified buyers choosing a reduced financing rate in lieu of rebate on selected vehicles are eligible for 10.9% financing over 48-month term. See Dealer for details. Transactions are subject to Chrysler Credit Canada Ltd. approval on purchase and delivery at Jeep/Eagle Dealers from October 1, 1990 until such time as terminated by Chrysler Canada Ltd. Delivery must be taken from existing Dealer inventory of new vehicles. Financing offers exclude fleet orders and retail lease vehicles. The offers cancel and replace any and all previous offers and may not be combined. Example: If the amount financed is \$10,000 on the purchase of an eligible vehicle for a term of 48 months, the financing rate would be 10.9% APR with a monthly payment of \$217.97. The total cost of borrowing is \$2,362.56. The total amount to be repaid is \$12,362.56. Assuming a rebate of \$1,000 as the alternative, if the amount financed is \$9,000, the financing rate would be 10.9% APR with a monthly payment of \$207.97. The total cost of borrowing is \$2,262.56. The total amount to be repaid is \$11,262.56. In the example given, the total of borrowing, including the rebate not taken, would be \$12,362.56 resulting in an effective interest rate of 16.67%. Buyer must pay for transportation, license, taxes and other fees such as registration. Retail lease vehicles are eligible for cash rebates only. Special leasing rates, as an alternative to rebates, are available on selected models. See Dealer for details.

Jeep and Eagle Dealers of Ontario

Milton Jeep/Eagle
81 Ontario Street, Milton, Ontario
878-8877 Sales
878-8808 Service 842-2544 Toronto Line



CORRECTION NOTICE

ON THE FRONT PAGE OF THE SHOPPERS DRUG MART FLYER IN TODAY'S PAPER, HEAD & SHOULDERS 250 ml PLUS 100 ml BONUS SHOULD HAVE READ 2.99

SHOPPERS DRUG MART APOLOGIZES FOR ANY INCONVENIENCE THIS MAY HAVE CAUSED OUR CUSTOMERS.

SHOPPERS DRUG MART