

Vandals trash donation bins at White Oaks Plaza

By JANE MULLER

Good intentions are turning into trash at the back door of the local Salvation Army thrift shop on Main Street.

Ruth Zimmerman, an employee at the store, was so angered last week at the mound of donated goods left outside the shop on the weekend that she called *The Champion*.

"I don't understand people," she said.

Her frustration stemmed from the fact that vandals had left the donations in and also from the fact that the items of furniture and clothing had been exposed to the elements.

"There were 10 or 15 bags that had been split open. The stuff was all over and soaking wet. Nothing could be salvaged," she explained.

She commended the town's "terrific contributors" to the Thrift Store at 363 Main St. E. but stressed that items should be brought to the store during its operating hours. Large items will be picked up if arrangements are made through the thrift

shop.

The Salvation Army until recently had a donation container available 24 hours a day at White Oaks Plaza on Bronte Street. Dispatching paid drivers to the container amounted to "nothing but a garbage pick-up," said Mrs. Zimmerman.

Along with the donation container, recycling containers have also been removed from the plaza. The property manager at White Oaks, Jim Leworthy, requested the Salvation Army remove its receptacle and also asked the Town to take away the bins meant for recyclables.

"The recycling containers overflow and kids come and smash the bottles. It's an ongoing battle with this. I've done everything in my power to keep the plaza clean," he says.

Mr. Leworthy explained that it was a privilege offered to the Town and the Salvation Army to have their containers on the plaza property. He said he may invite them back if a location can be enclosed and the "mounds and mounds of broken

chairs and bottles" could be discouraged.

Items to be donated to the Salvation Army can be dropped off at the Thrift Store during regular business

hours, 9:30 a.m. to 4:30 p.m. Monday to Thursday and Friday until 7 p.m. The shop is open from 9:30 a.m. to 5 p.m. on Saturdays. To arrange pick up of large items, call 876-4831.

According to Mr. Leworthy, garbage other than glass, paper and tin was being dumped in and around the recycling bins and Salvation Army donation bin.

where "Smart Money" shops!!

Ripper's

QUALITY FROZEN FOODS

**Best Deals
in Town!!
Guaranteed**

Shopsy's Famous
JUMBO

HOT DOGS

Box of 11 pounds
(over 65 dogs) reg. '85 95

25.95



Boneless, Skinless
CHICKEN BREAST

Only **19.95**

2 kg. box
(4.4 lbs.)
Pre-cooked, heat 'n serve

Reg.
24.95

Hot 'n Spicy
**CHICKEN
WINGS**

Box of 4.4 lbs
Reg. 14.50

(Cut tips removed)
Only **9.95**

100% Pure
**BEEF
BURGERS**

Box of 5 lbs
(20x4oz.) Reg. 12.95

Only **8.95**

Ripper's Delicious

CHEESE CAKES

(choice of
Plain, Choc. Chip, Amaretto
ea. cake serves 2)

5.95

Breaded, heat 'n serve

**CHICKEN
BURGERS**

15 per bag
(All White Meat!!)

Only **9.95**

Reg.
12.95

All Specials good until Oct. 30,
or while they last...Hurry In!
Phone **875-3787**

Where is **Ripper's**
550 Ontario St.S. (at Derry Rd.)
in the new Mall **OPEN 7 Days**

**UNIVERSITY EVENING
MILTON DISTRICT
HIGH SCHOOL
TUES. OCT. 30/90
7:00-8:30 p.m.**

Senior/O.A.C. students and parents are asked to attend this special program on **Choosing, Applying and Preparing for University.** Application forms and information packages will be distributed to applicants who are applying to university for September 1991. Other students and parents are also welcome to attend.

To help us in planning RSVP to M.D.H.S. Guidance Department by Monday, October 29th or sooner!

878-2839

**Typing or
Word Processing
with
PRECISION**

Transform your written or voice recorded text into professional looking documents.

Letters • Cover Letters
Proposals • Resumes
Custom Spreadsheets
Reports • Manuals
AND MUCH MORE

**Fast Dependable Service,
Strictly Confidential.**

Experience the
**PRECISION
difference.**

**PRECISION
BUSINESS
SERVICES**

(519) 853-4235

ATTENTION

Co-operator's Policy Holders!...



People helping people. That's the co-operative idea. The people of the Co-operators are working to provide protection for people and the things they own. We offer a full range of coverages to meet your needs - auto, home, commercial, life, RRSPs, farm and travel.

Are you fully covered?

Now is the time to find out.

To celebrate Co-op Week, if you buy another policy between October 15 to December 1, you could be eligible to win a VCR (draw to be held December 7).

Call us today for details.

**the
co-operators**

Insurance/Financial Services

44 MAIN ST. EAST
878-8176

Auto • Home • Commercial • Life • RRSPs • Farm • Travel

**Freeman
COMMERCIAL**



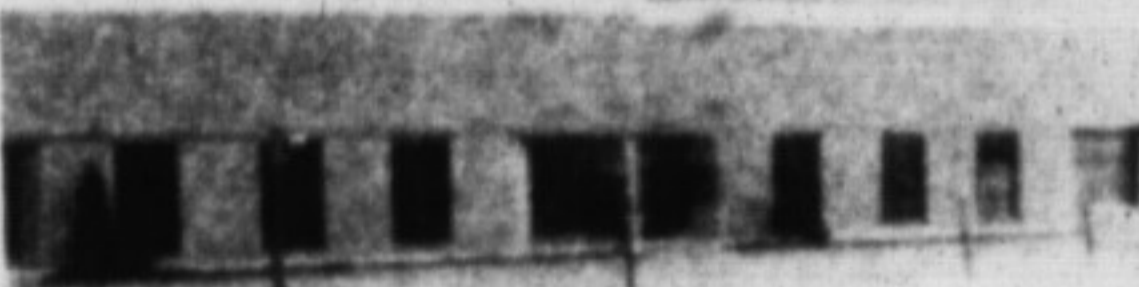
A Freeman Real Estate Company Inc. Broker

842-8690 (res.) 878-4380

Marilyn Andrews
Sales Representative

**INDUSTRIAL COMMERCIAL INVESTMENT
SPECIALISTS**

INDUSTRIAL FOR LEASE



**1981 RATE FOR FIRST YEAR
- \$2.95 NET NET**

30,756 sq. ft., free standing bldg on 1.6 acres,
6D.L., 21' Clear, Good warehouse and
manufacturing. Purchase possible.

- 15,000 sq. ft., D.L. and D.I., 18' Clear, Finished to Suit, can be divided from 5,000-10,000 Asking \$4.50 Net Net
- 2,000-10,000 sq. ft., 21' Clear, New Prestige Building, Mezzanine, Asking 5.00 Net Net, Available For Sale.
- 2,000 sq. ft., Close to Auto Auction, D.I. Door Asking \$5.00 Net Net
- 2800 sq. ft., 2 D.I. Doors, Excellent Location at Main/Thompson, Asking \$5.00 Net Net
- 2,000 sq. ft., Main Street, D.I. Door Asking \$4.25 Net Net
- 1600 sq. ft. D.L. Door, Lawson Rd., Asking \$5.00 Net Net

INDUSTRIAL FOR SALE

- 1 Acre, Nipissing Road, Approval for 15,000 sq. ft. condo, Fully Serviced Asking \$365,000.
- 14 Acres, 401 Exposure, Fully Serviced, Outside Storage \$265,000. per acre

- 3 Acres, Outside Storage, Close to 401 Asking \$265,000. per acre
- 19,000 plus sq. ft. Free standing, Speers Rd. Oakville \$995,000

COMMERCIAL



500 STEELES AVENUE

Fantastic location across from Court House 7735 sq. ft. building with plenty of parking. Asking \$890,000. Lease for \$10.00 Net Net. Ideal sight for fruit/veg. market.



24 BRONTE STREET

50x100 ft. lot with brick home. Great location at Bronte/Main for professional office. Asking \$275,000.



BUSINESS AND RESIDENCE - ONE ADDRESS

Very attractive 1800 sq. ft. brick bungalow plus NEW 6000 sq. ft. industrial bldg. on .77 acre M2A zoned. Minutes to James Snow/401. Reduced to \$795,000.

3.3 acre rural industrial site includes 4800 sq. ft. plus industrial building plus 5 bedroom, 2100 sq. ft. brick bungalow. Prime location close to 401 and Winston Churchill. Asking \$950,000.

Prime 2 acre parcel within Milton's planned industrial park. Steel barn plus brick bungalow. Asking \$600,000. Capitalize on this investment site.

BUSINESS AND REAL ESTATE FOR SALE

Reduced to sell. Plumbing and Heating Business well established with very attractive growth prospects. Operating 40 years in Milton. Fully equipped. For full information, contact Walter Jennings.

147 Mary Street and 146/148 Main Street includes a residential home plus 2 sheds on a 66 x 132' lot. Main Street contains a 3500 sq. ft., 2 storey brick building with 2 apts. plus 2 commercial units on a 36' x 132' lot. Asking \$730,000 or can be sold separately. Good redevelopment potential.

I CAN FIND THE SPACE YOU REQUIRE!

This is not intended to solicit properties currently listed with other brokers.