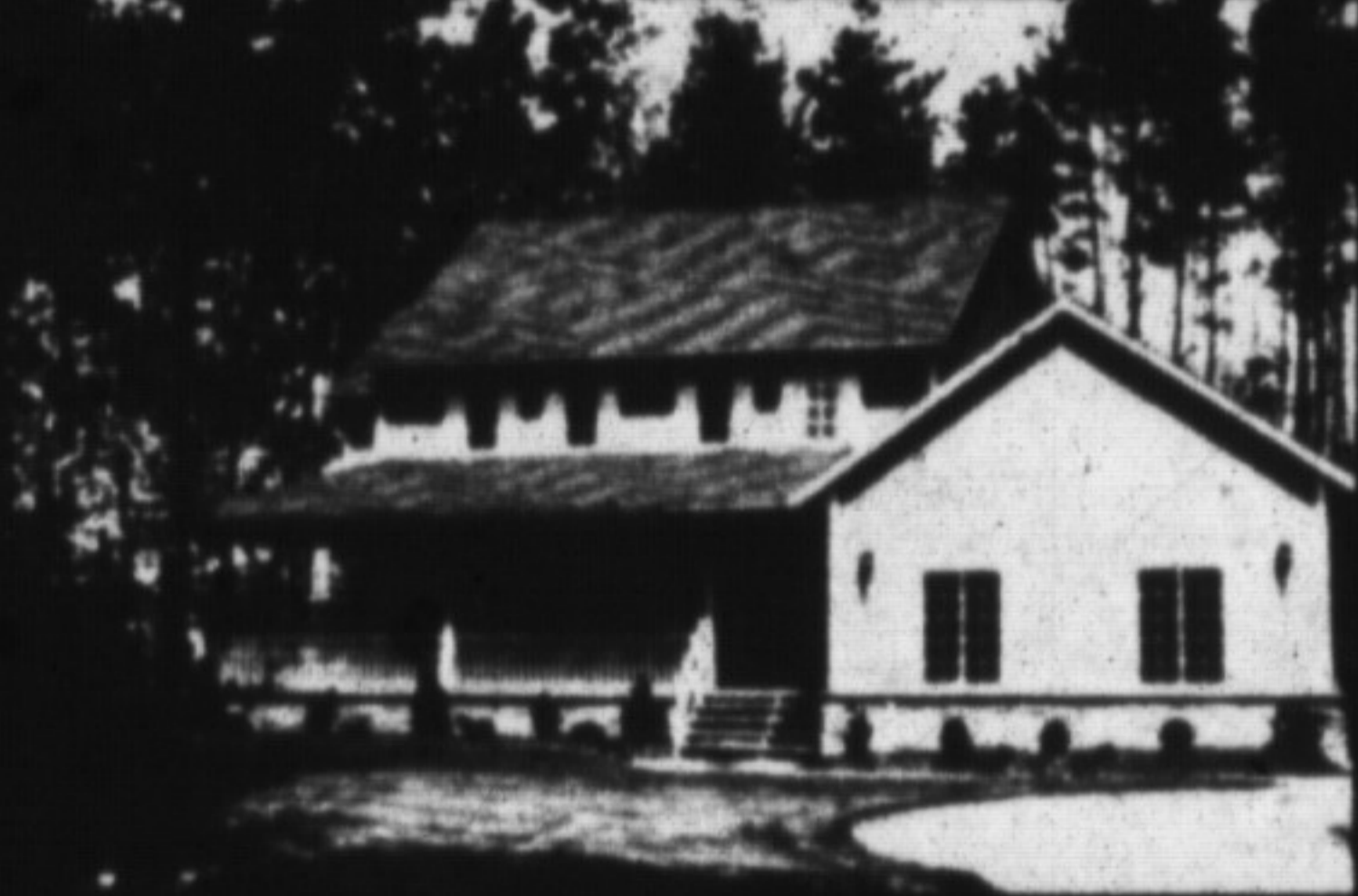


UNDER POWER OF SALE

100 acre horse farm, only 7 min. from Georgetown.
6000 sq. ft. home with indoor pool, barns, box stalls,
arena, pond, board fenced paddocks, very scenic.
For details, call Arnold Sasek 238-3377.

CENTURY 21 KINGSBURY REAL ESTATE LTD.

Country Lovers



Two
Here
Lots

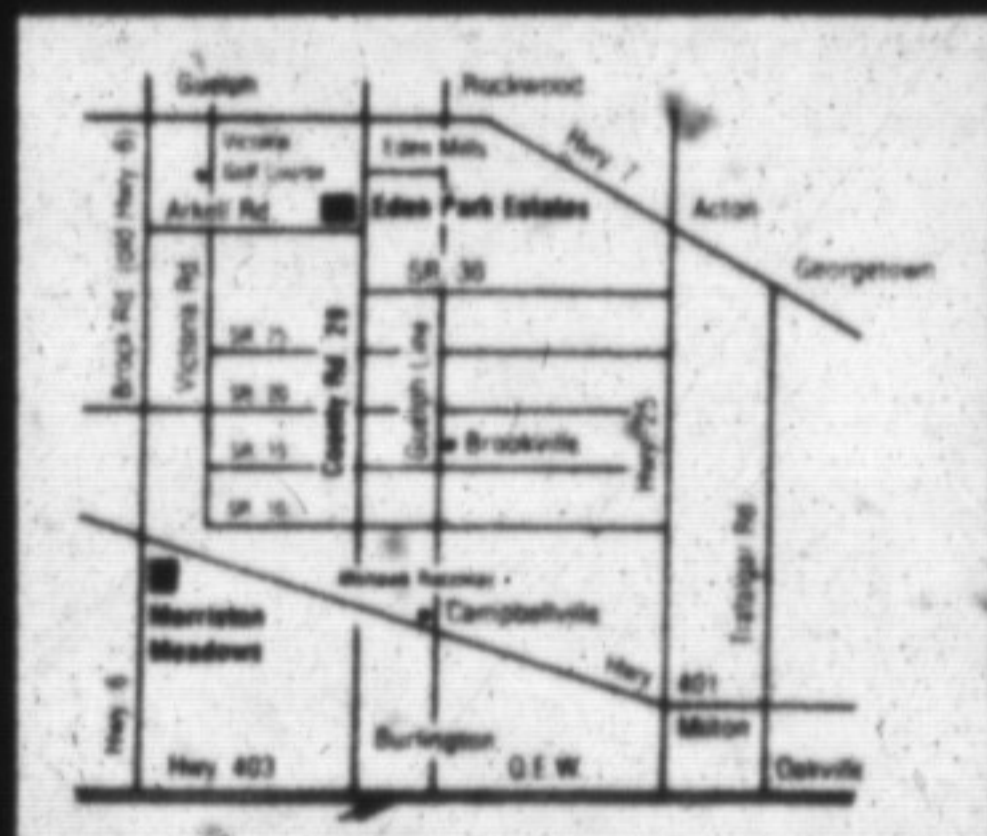
Make your home a piece of Ontario's heartland... the serenity of one of our limited, executive class homes enhanced by extensive natural tree cover in EDEN PARK ESTATES. So beautiful, so convenient...

11 1/4% - 2 yrs.
some conditions apply

For more information call:
Cheryl Chamula representing
Bishop Estate Homes
(519) 824-9701, pager #92104

Irene Pries representing
Royal City Realty, Halton Ltd.
(416) 450-9544

Model Home Open
Sat. & Sun. 1 - 5 pm
(519) 856-1220
30 minutes west of Mississauga



GETTING A HANDLE ON HAMMERS

The handle is an important feature to consider when purchasing a hammer, because it significantly affects the way a hammer "handles." The experts at Stanley Tools suggest do-it-yourselfers choose the hammer that feels the most comfortable in the hands.

Many handles are made from tubular steel or fiberglass with a perforated vinyl or rubber grip covering. Many seasoned professionals prefer the feel of solid wood handles, usually made from flame-tempered hickory.

A dependable hammer head should be made from high-carbon steel and have a heat-treated face for strength and durability, according to the experts at Stanley Tools. The face also should be convex to increase nail driving efficiency.

Hammers with "curved" claws make better all-purpose hammers than those with "rip" claws. Curved claws with sharp double-beveled edges make the nail-pulling process easy.

Canada Trust Realty



PRIVACY & CONVENIENCE

\$194,900 or \$1,500 per month rental, 3+ bedrooms, 1 1/2 baths, updates & maintenance free, large cedar deck with hot tub. Call Michele Gaboury Res. 845-8445, Pager. 842-1920



QUIET CRES. SUPER YARD

\$209,900. Immediate possession, 4 bedrooms, 3 bathrooms, finished basement, close to schools and shopping. For appointment or more information call Michele Gaboury Res. 845-8445, Pager. 842-1920.

JOYCE SCOTT REAL ESTATE INC. JSR

AFFORDABILITY IS BACK

\$209,000.
IMMEDIATE POSSESSION REDUCED TO \$209,000.

\$194,900.
NEW LISTING MILTON AT \$194,900.

Owner transferred, 3-4 bedrooms, master bedroom with adjoining sitting room, upgraded bathroom. Beautiful remodelled kitchen, lovely sun room overlooking gold fish pond with waterfall. Great location. Call immediately for details.

Backing onto parkland, the home is well maintained, 3 bedrooms, good size master 4.80 x 3.63. Living room with attractive brick fireplace, bright & sunny kitchen. Fully fenced back yard with patio side and rear, nicely placed trees on lawn. Excellent neighborhood.

Independent Real Estate Brokers Association MEMBER

JOYCE SCOTT
BROKER-OWNER
878-1526
Member of Multiple Listing Services
12 years of integrity and satisfaction.

E
R
S
E
T
A
A
L
T
E

FURLONG COLLINS GUNDING BARRISTERS & SOLICITORS

Ask us if you need a lawyer

878-8123

Ask us if you need a lawyer

BANKS	VARIABLE RATE	6 MONTHS	1 YEAR	2 YEARS	3 YEARS	4 YEARS	5 YEARS
Cdn Imperial	13 1/4op	13 1/4op	13 1/4op	13 1/4	13 1/4	13 1/4	13 1/4
Bank of Montreal	13 1/4op	13 1/4op	13 1/4op	13 1/4	13 1/4	13 1/4	13.20
Laurentian Bank	n/a	13 1/4op	14op	13 1/4	13 1/4	13 1/4	13 1/4
National Bank	n/a	14op	14 1/4op	13 1/4	13 1/4	13.40	13.40
Bank of N. S.	13 1/4op	13 1/4op	13 1/4op	13 1/4	13 1/4	13 1/4	13 1/4
Royal Bank	13 1/4op	13 1/4op	13 1/4op	13 1/4	13 1/4	13 1/4	13 1/4
Toronto-Dominion	13 1/4	13 1/4	13 1/4op	13 1/4	13 1/4	13 1/4	13 1/4
TRUST COMPANIES							
Cabot Tr.	n/a	14op	14 1/4op	13 1/2	13 1/2	13 1/2	13 1/2
Canada Trust	13 1/4op	13 1/4op	13 1/4	13 1/4	13 1/4	13 1/4	13 1/4
Central-Guaranty Trust	13 1/4	13 1/4op	13 1/4op	13 1/4	13 1/4	13 1/4	13 1/4
Co-operative Trust	n/a	13 1/4op	13 1/4op	13 1/4op	14op	13 1/4	13 1/4
General Trust	n/a	14 1/4op	14 1/4op	13 1/4	13 1/4	13 1/4	13 1/4
Guardian Trust	n/a	13 1/4op	13	13 1/4	13 1/4	13	12 1/2
Household Trust	n/a	13 1/4	13 1/4	13 1/4	13 1/4	13 1/4	13 1/4
Montreal Trust	n/a	13 1/4op	13 1/4op	13 1/4	13 1/4	13 1/4	13 1/4
National Trust	13 1/4	13 1/4	13 1/4op	13 1/4	13 1/4	13 1/4	13 1/4
Premier Trust	n/a	13 1/4op	13 1/4	13 1/4	13 1/4	13 1/4	13 1/4
Prenor Trust	n/a	13 1/4op	13 1/4op	14op	13 1/4	13 1/4	13
Royal Trust	n/a	13 1/4op	13 1/4op	13 1/4	13 1/4	13 1/4	13 1/4
Standard Trust	n/a	13 1/4	13 1/4	13 1/4	13 1/4	13 1/4	13 1/4
Cuna Credit Union	13 1/4op	13 1/4op	13 1/4op	13 1/4	13 1/4	13 1/4	13 1/4
Jet Power Credit Union	n/a	13 1/4op	13 1/4op	R.O.R.	R.O.R.	R.O.R.	R.O.R.

NOTES: ** Interest rate charged subject to adjustment during term of mortgage. Please consult institutions for term of years available.

R.O.R.- Rates on request
op-Open
-Not quoting

R/O-Renewals only
N/A-Not applicable

RATES TAKEN:
OCTOBER 12, 1990
Fiscal agents specializing in trust and loan investments, and also supplies free consumer information on these investments. Phone: 844-7700.

CHRISTIE & WOODS REAL ESTATE LTD.

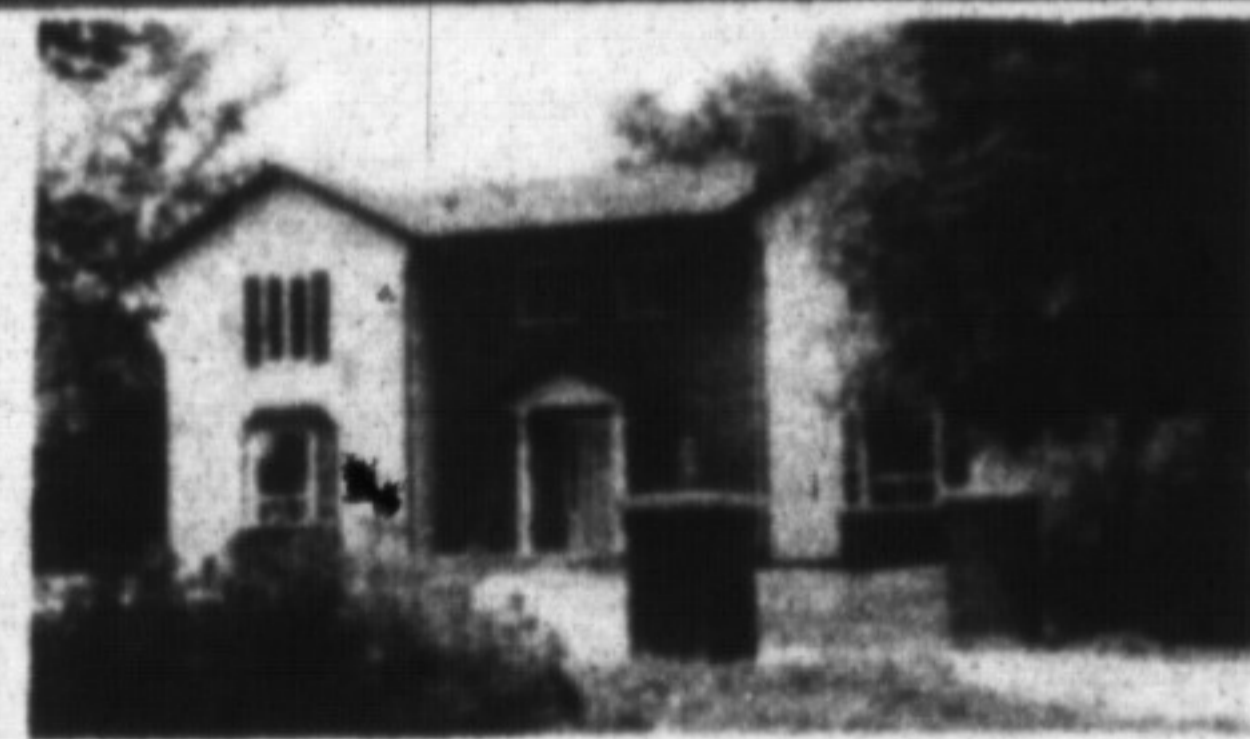
189 Main Street, Milton

878-2095



SHOW & SELL WELL! WELL! WELL!

Well Located! Well Built! Well Kept! Well Priced! Centre hall plan, inviting living room with bay window, dining room overlooking park, fireplaced family room with sliding glass doors leading to patio, 3 large bedrooms plus master bedroom with ensuite. Reasonable priced, may we tell you more, our pleasure to show you. For a personal tour, call Tim Nevins 878-2095



WANT A BRAND NEW HOME? COME SEE! COME SIGH!

Quality construction throughout, just add your own personal decorating touches to this 4 bedroom, 2 storey home, close to beautiful escarpment & ski area, also close to town & on town water. Extras include oak trim throughout, ceramic floors in entrance & kitchen, beautiful fireplace in family room. For more details & vendor take back mortgage at a very reasonable rate, call Marg Christie 878-2095.

CASH BUYER ANXIOUS TO PURCHASE A PROPERTY

In an older area of town, home with 3 bedrooms & a garage would be an incentive for this serious buyer, price must be under \$198,000. Possession 30-60 days. If you are thinking of selling, please call Cameron Gall 878-2095.



TAKE A CLOSER LOOK! A PLACE WITH SPACE!

This elevated ranch, double the space, half the taxes, with huge 2 car garage completely drywalled plus office space, plus storage barn, located in picturesque area, brick floor to ceiling fireplace in liv. room stone fireplace with insert in family room, dining room opens to large deck with afternoon sun. Bedrooms 3-up & 2 down. Don't Delay! Call Today! See for yourself the features this family home has to offer. Call Yvonne Christie 878-2095.

Yvonne Christie Broker Owner 878-2095

Tim Nevins * 875-1263
Allan Christie * 878-2095
Cameron Gall * 876-2856
Margaret Christie * 875-2443
Sales Rep.