

RE/MAX

Miltowne Realty Corp.

"Locally owned and operated - #1 in Home Sales since 1983"
22 Ontario St. South, 878-2365

RE/MAX - The Canadian Champion, Windsor, Ontario, October 10, 1990



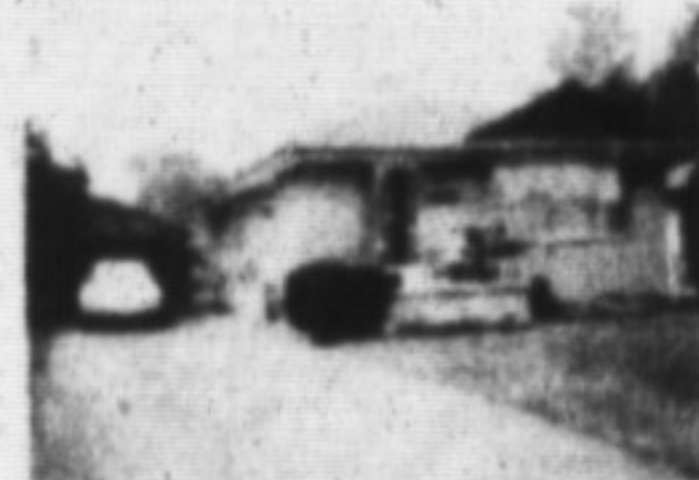
RICHARD HIERMAN

Sales Representative
Office 878-2365
Toronto 826-1030
Residence 878-5806



GREAT PRICE SUPER FINANCING

This 3 bedroom semi is a pleasure to see and easy to own with 11% financing. Don't miss this opportunity with price reduced to \$166,900.



A PIECE OF THE PARK

This detached bungalow backs onto a quiet park on a mature street. Separate garage and large lot complement the well kept home. All this for just \$169,900.



SATOK CRESCENT

Very large four bedroom home with greenhouse kitchen, fireplace on main floor. \$180,900.



BETTY INGLE

Sales Rep
878-2365
Res. 827-4286

Phone Betty for more information or an appointment to view these properties.



SWIMMING POOL

Bungalow on 1/2 acre lot
Immaculate
Reduced to \$324,500.



BUNGALOW & BARN

3 Bdrms., eat-in kitchen, wood burning stove, finished basement. \$242,900.



CEDARBRAE

3+ bedroom backsplit in desirable area, inground pool, interlock brick walkways. \$204,900.



CAMPBELLVILLE

Custom built home on 2 acres with creek and pond. Home offers 3 bdrms., large family room with F.P., country kitchen. Must see \$319,900. Priced to sell.



A PAMPERED BEAUTY

It's just what you'll find when you see this totally finished 2-storey home. Walkout from kitchen allows you to enjoy the view of the conservation beyond your back yard. Basement has a walkout from the finished rec. room. Loaded with upgrades. Only \$172,900.00. Call today to view this home. Ask for JEFF WRIGHT.



JEFF WRIGHT

SALES
REPRESENTATIVE

OFFICE: 878-2365
TORONTO: 826-1030
RES: 878-5110



THIS COULD BE YOUR HOME

4 bedrooms, 2 full bathrooms, finished basement with a wood stove, sunroom and a large lot with an inground pool. Located in a well established neighborhood. Close to GO Transit & all amenities. For more details please call now and ask for JEFF WRIGHT.



THE DREAM STARTS HERE ONLY \$147,000.00

In this charming 2-level townhome. Recently redecorated including new parquet floor & broadloom. Finished basement ideal for rec. room or 4th bedroom. Make your viewing appointment today. Ask for JEFF WRIGHT.

LONG TERM INVESTMENT POTENTIAL \$999,000.00

64+ acre farm. Located East of Kildee. Spectacular view and varying topography. Includes a custom built home and numerous out-buildings. For more information please call JEFF WRIGHT.

RECREATIONAL INVESTMENT 235 ACRES

Plus a Heritage home on the Rideau Canal. Ideal for conservation lovers. Secluded yet accessible. Waterfront on 2 lakes enroute with the Rideau boat passage. Call JEFF WRIGHT for more information.



JEAN SNOWDEN

Sales Rep
878-2365



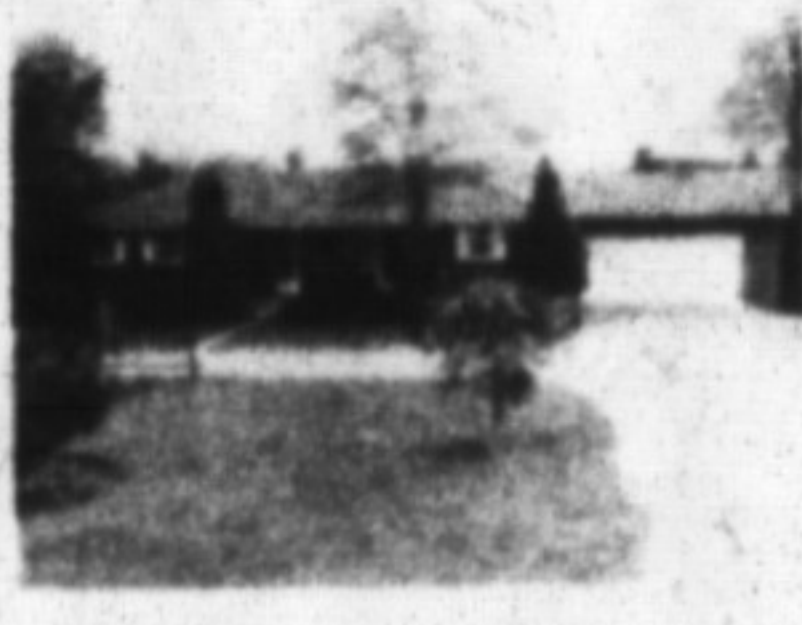
GREEN ACRES INDEED

So much to tell... so little space. Here is a brief "sketch", 10 acres with about 1000 apple trees, large elegant home with fabulous Barzotti kitchen, built-in appliances, sitting area & stove. The finished lower level has a games room, giant rec. room with 2nd fireplace, office & bathroom. This property offers so many options with its 3 barns, stable, paddock & half-mile track. For full details call Jean \$750,000.



BIG HOUSE FOR MEDIUM BUDGET

Everything fits well in this spacious home has a large eat-in kitchen with oak cupboards, family room with fireplace & walk-out to private yard with deck and entertainment area, a den or 4th bdrm., hobby room and additional cold cellar. The central air and central vacuum add a great bonus. Call Jean. \$209,000.



JUST LISTED ACRES PLUS VIEW

Minutes from town sits this secluded bi-level bungalow on glorious rolling 2.5 acres. Finished lower level with walkout to finely manicured lawns. A must to see \$389,000. Call Jean.



SANDRA A. BAILEY

Sales Representative

Bus.
878-2365
24 hr. Pager 878-2020
For. Line
826-1030

RE/MAX Miltowne Realty Corp.
22 Ontario St. S., Milton



SPACIOUS AND NICE

Describe this 2 storey home centrally located in a mature area of Milton — with 4 bedrooms, fireplace, patio doors off kitchen leading to a 2 level deck and pool — there's more! Priced at \$198,800. For a personal viewing please call Sandra A. Bailey.



12-1/2% MORTGAGE — FEBRUARY 1994

For the truly discriminating buyer, this cozy 2 storey home, on a quiet cul-de-sac has much to offer. Freshly painted inside and out. New vinyl flooring, family rm. with F.P., fenced yard, new fridge & stove. Put this at the top of your list as a must see. Please call Sandra A. Bailey for a personal viewing.



REDUCED FOR YOU

At \$138,800, this is an excellent opportunity for the 1st time buyer. Decorated from top to bottom, upgraded broadloom, all blinds included. All you have to do is supply the furnishings. For a personal viewing please call Sandra A. Bailey.



*Above
the
Crowd!*

RON MacNEIL

SALES REP
Office: 878-2365
Res: 878-0198



VILLAGE OF CAMPBELLVILLE

Begin life together in this 4 bedroom 1 1/2 storey home in Campbellville. Tie the knot on a super BUY! Lower than you would think. For a showing of the home call RON MacNEIL.

**BETTY
BRADING**
Sales Representative
878-2365 Office
878-6716 Res.



1.74 ACRES OF HEAVEN

trees, trout pond, outdoor sauna, pool, 2 fireplaces, birds, geese, fish, right in the village. Vendor will consider holding a 1st mortgage. \$449,900.



4 LEVEL BACKSPLIT

Take a look at the reasons why! You should move into this fine 4 bedroom backsplit. Close to schools, shopping & recreation facilities. For a personal viewing please CONTACT RON MacNEIL 878-2365. \$213,900.



GOOD STARTER HOME

4 bdrm., new gas furnace in 1983. Close to shopping, clean.

TAKE A LOOK AT THIS

Small 11 unit townhouse complex. 3 B.R., now broadloom, central air, ground floor family room extra large fenced yard.



DOGGONE GOOD DEAL!

- Small kennel room in basement
- New high efficiency furnace (August 1990)
- New central air (August 1990)
- 3 bedroom, 2 car garage, 3 bathrooms
- Breakfast area
- Large deck in back yard

Pet friendly price of just \$219,900. Call for more frisky facts. RON MacNEIL 878-2365.