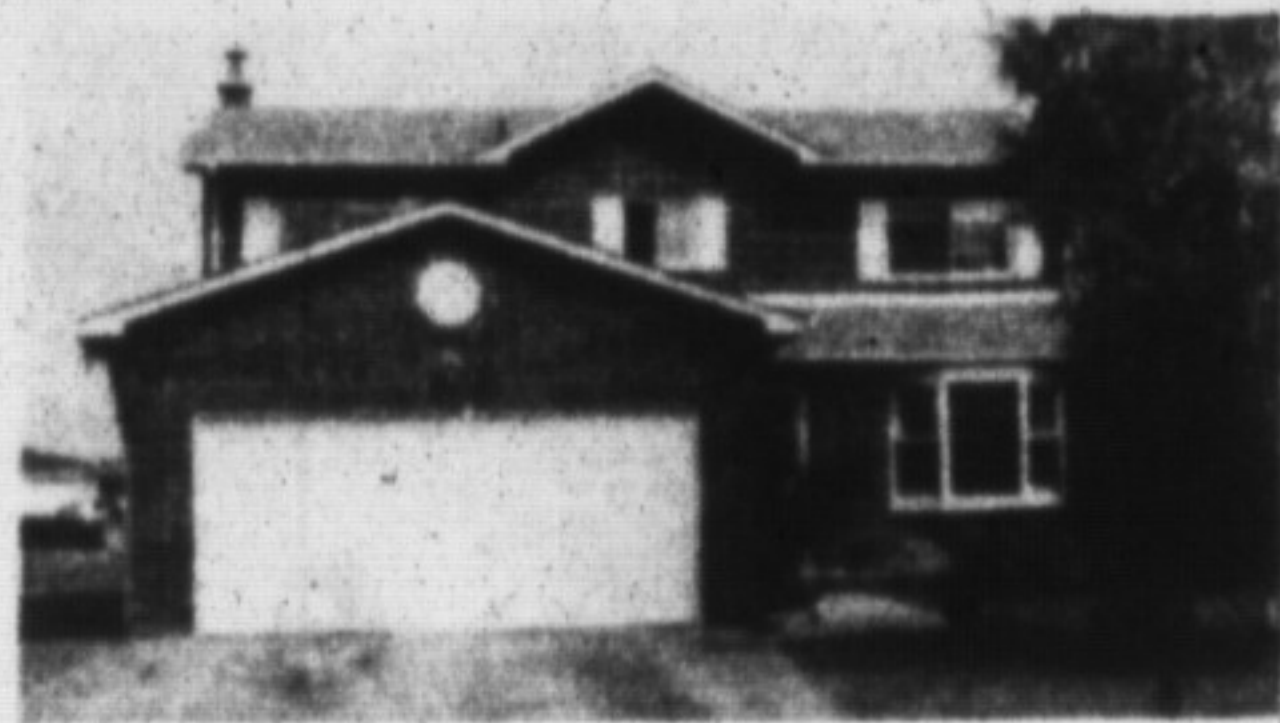


CHRISTIE & WOODS

REAL ESTATE LTD.

189 Main Street, Milton

878-2095



SHOW & SELL WELLI WELLI WELLI

Well Located! Well Built! Well Kept! Centre hall plan, inviting living room with bay window, dining room overlooking park, fireplaced family room with sliding glass doors leading to patio, 3 large bedrooms plus master bedroom with ensuite. Reasonably priced, may we tell you more, our pleasure to show you. For a personal tour, call Tim Nevins 878-2095.



WANT A BRAND NEW HOME? COME SEE! COME SIGH!

Quality construction throughout, just add your own personal decorating touches to this 4 bedroom, 2 storey home, close to beautiful escarpment & ski area, also close to town & on town water. Extras include oak trim throughout, ceramic floors in entrance & kitchen, beautiful fireplace in family room. For more details & vendor take back mortgage at a very reasonable rate, call Marg Christie 878-2095.



TAKE A CLOSER LOOK! A PLACE WITH SPACE!

This elevated ranch, double the space, half the taxes, with huge 2 car garage completely drywalled plus office space, plus storage barn, located in picturesque area, brick floor to ceiling fireplace in liv. room stone fireplace with insert in family room, dining room opens to large deck with afternoon sun. Bedrooms 3-up & 2 down. Don't Delay! Call Today! See for yourself the features this family home has to offer. Call Yvonne Christie 878-2095.

Yvonne Christie Broker Owner 878-2095

Tim Nevins * 875-1263
Allan Christie * 878-2095

Cameron Call * 876-2856
Margaret Christie * 875-2443

* Sales Rep.

FURLONG COLLINS GUNDING

BARRISTERS & SOLICITORS

Ask us if you
need a lawyer

878-8123

Ask us if you
need a lawyer

BANKS	VARIABLE RATE	6 MONTHS	1 YEAR	2 YEARS	3 YEARS	4 YEARS	5 YEARS
Cdn Imperial	14 1/2 op	13 1/2 op	13 1/2 op	13 1/4	13 1/4	13 1/4	13 1/4
Bank of Montreal	13 1/2 op	13 1/2 op	13 1/2 op	13 1/4	13 1/4	13 1/4	13.20
Laurentian Bank	n/a	13 1/2 op	14 op	13 1/4	13 1/4	13 1/4	13 1/4
National Bank	n/a	14 op	14 1/2 op	13 1/4	13 1/4	13.40	13.40
Bank of N S	14 1/2 op	13 1/2 op	13 1/2 op	13 1/4	13 1/4	13 1/4	13 1/4
Royal Bank	13 1/2 op	13 1/2 op	13 1/2 op	13 1/4	13 1/4	13 1/4	13 1/4
Toronto-Dominion	14 1/4	13 1/4	13 1/2 op	13 1/4	13 1/4	13 1/4	13 1/4
TRUST COMPANIES							
Cabot Tr.	n/a	14 op	14 1/2 op	13 1/4	13 1/4	13 1/2	13 1/2
Canada Trust	13 1/2 op	13 1/2 op	13 1/2	13 1/4	13 1/4	13 1/4	13 1/4
Central-Guaranty Trust	14 1/4	13 1/2 op	13 1/2 op	13 1/4	13 1/4	13 1/4	13 1/4
Co-operative Trust	n/a	13 1/2 op	13 1/2 op	13 1/2 op	14 op	13 1/4	13 1/4
General Trust	n/a	14 1/2 op	14 1/2 op	13 1/4	13 1/4	13 1/4	13 1/4
Guardian Trust	n/a	13 1/2 op	13	13 1/4	13 1/4	13	12 1/2
Household Trust	n/a	13 1/2	13 1/2	13 1/2	13 1/2	13 1/2	13 1/2
Montreal Trust	n/a	13 1/2 op	13 1/2 op	13 1/4	13 1/4	13 1/4	13 1/4
National Trust	13 1/4	13 1/4	13 1/2 op	13 1/4	13 1/4	13 1/4	13 1/4
Premier Trust	n/a	13 1/2 op	13 1/2 op	13 1/4	13 1/4	13 1/4	13 1/4
Prenor Trust	n/a	13 1/2 op	13 1/2 op	13 1/2 op	13	13	12 1/2
Royal Trust	n/a	13 1/2 op	13 1/2 op	13 1/4	13 1/4	13 1/2	13 1/4
Standard Trust	n/a	14	14	14	14	14	13 1/2
Guna Credit Union	13 1/2 op	13 1/2 op	13 1/2 op	13 1/4	13 1/4	13 1/4	13 1/4
Jet Power Credit Union	n/a	13 1/2 op	13 1/2 op	R.O.R.	R.O.R.	R.O.R.	R.O.R.

NOTES: ** Interest rate charged subject to adjustment during term of mortgage. Please consult institutions for term of years available.

R.O.R. - Rates on request
op - Open
--- Not quoting

R/O - Renewals only
N/A - Not applicable

RATES TAKEN:
SEPTEMBER 28, 1990

Fiscal agents specialize in trust and loan investments, and also supplies free consumer information on these investments. Phone: 844-7700.

Country OPEN HOUSE

SUN. OCTOBER 14th 1:30 - 4:30 P.M.

Enjoy the Fall colours as you drive to see these fine country homes presented by Milton Realtors.



Denotes all Open Houses in Village of Campbellville (Follow signs to properties)

Countrywide Campbellville 854-2294

116 Campbell Avenue — \$334,000
170 Crawford Crescent — \$389,000
100 Crawford Crescent — \$735,000
3000 3rd Sideroad — \$324,900

Royal LePage 878-8101

Whispering Pines — \$599,000
106 Jessie Avenue — \$379,900
4245 4th Side Road - Burlington — \$644,900
15th Side Road - Moffat - \$239,900
4th Line, R.R. #2 - Acton - \$359,900
10th Side Road and Fifth Line (Esq.) — \$699,000

Christie & Woods 878-2095

7324 Twiss Rd. — \$315,000

Royal City 876-1156

10th Side Road — Wegman — \$679,900
Nikifork — 4th Line below 15 S.R. — \$349,900
Van Wart — 6th Line north of Steeles — \$349,900
5 Harrison Place — \$389,900
7 Glenda Jane — \$354,000

Remax 878-2365

95 Campbell Ave. — \$249,900
152 Jessie Avenue — \$339,000
129 Crawford Cr. — \$484,900
105 Mae Court — \$569,000
9416 First Line — \$239,900 (S. of 10 S.R.)
First Line — \$319,900 (S. of 10 S.R.)
13706 Fourth Line — (South of 30th S.R.)
4030 Derry Road — \$389,000
230 Borland Cr. — \$699,000

Century 21 — 878-8495

Hornby Road — \$184,000
10575 Guelph Line — \$349,000
5551 14th Sideroad — \$550,000
Whispering Pines — \$282,000 Plus R.R. #3, Georgetown — \$219,000
7575 Milborough Line — \$398,500