

Can't you picture yourself living here?

REB—The Canadian Champion, Wednesday, October 3, 1990



"LOT" HAPPY

Yes, your surroundings are important! Tired of living on a postage stamp? Look at this open concept backdrop of premium lot in mature quiet neighbourhood. Air conditioned, fenced, spacious private deck. \$185,000. Call NOVA SPARKS-AUSTIN at 821-4932 or 878-8495.



COUNTRY FOR ONLY \$219,000.

Beautiful lot which has been well landscaped, double car garage, eat-in kitchen which has been newly renovated, main floor den and two piece bath, rec room, living room with fireplace and lots more. Call JOAN E. TATTRE for your viewing at 878-8495 or res. 878-1575.



LOVELY HOME, PICTURESQUE LOT

With circular drive—definitely won't last. Many features to satisfy most discerning buyer all wrapped up in this unique 1-1/2 storey home. Two fireplaces spacious rooms throughout, main floor laundry and family room. \$220,000. Call NOVA SPARKS-AUSTIN to view, 878-8495 or 821-4932.



REDUCED

COUNTRY LIVING FOR \$184,000.

All brick bungalow has three bedrooms situated on a half acre lot, finished rec room with a fourth bedroom and double car garage, two baths and much more, call JAMES D. SNOW for the information at 878-8495.



NEED IMMEDIATE POSSESSION

We have the one available, four-bedrooms, two baths, large family room with fireplace and walk-out to fully fenced back yard, eat-in kitchen with walk-out to deck. Listed at only \$219,000. Call JOAN E. TATTRE for more details or viewing at 878-8495 or res. 878-1575.



FOR ONLY \$175,000.

You can own this beautiful semi; you'll get three bedrooms, two baths, finished rec room, central vac and central air, separate dining room and living room with fireplace, it's worth a look. Call JOAN E. TATTRE at 878-8495 or res. 878-1575.

URGENTLY "WANTED" FOR A PROSPECT

TO RENT FARM in north Milton rural area - should have:
- 4+ bedrooms
- 1+ useable barns
- 4+ acres of level land
- Possibility of future purchase if right property
If you have such a farm available for Rent/Purchase, please call
DON S. PELZ at 878-1029.

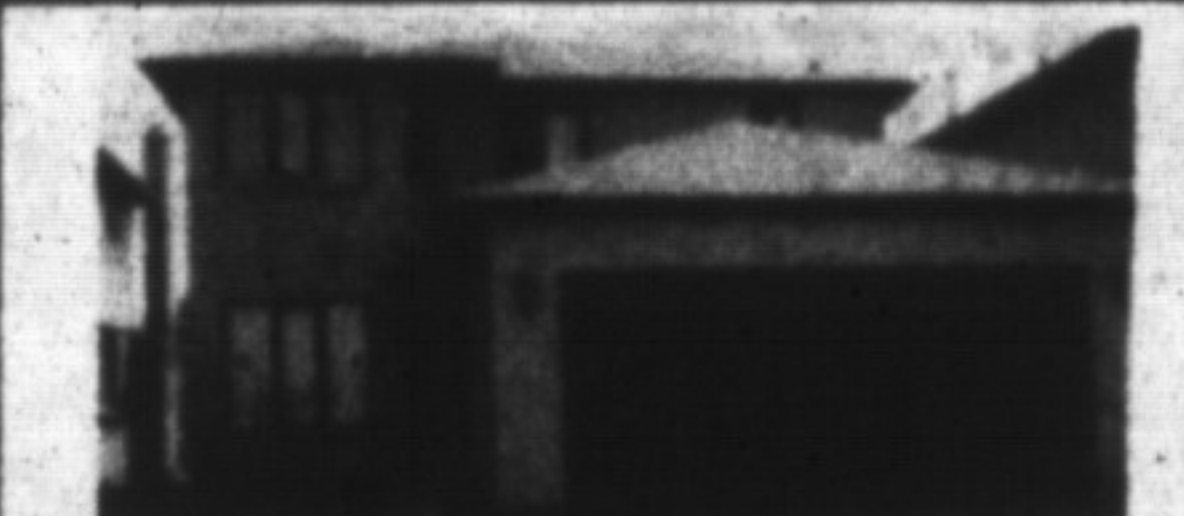
OCTOBER SPECIAL

12 ONLY - Prestigious building lots, 2 to 10 acres in size. Northwest-Milton close to 401 & Guelph Line. Vendor willing to take 50% plus back in (V.T.B.) Vendor take back at 10% for 2 years. Call DON S. PELZ for more info & viewing 878-1029.



FABULOUS FINANCING

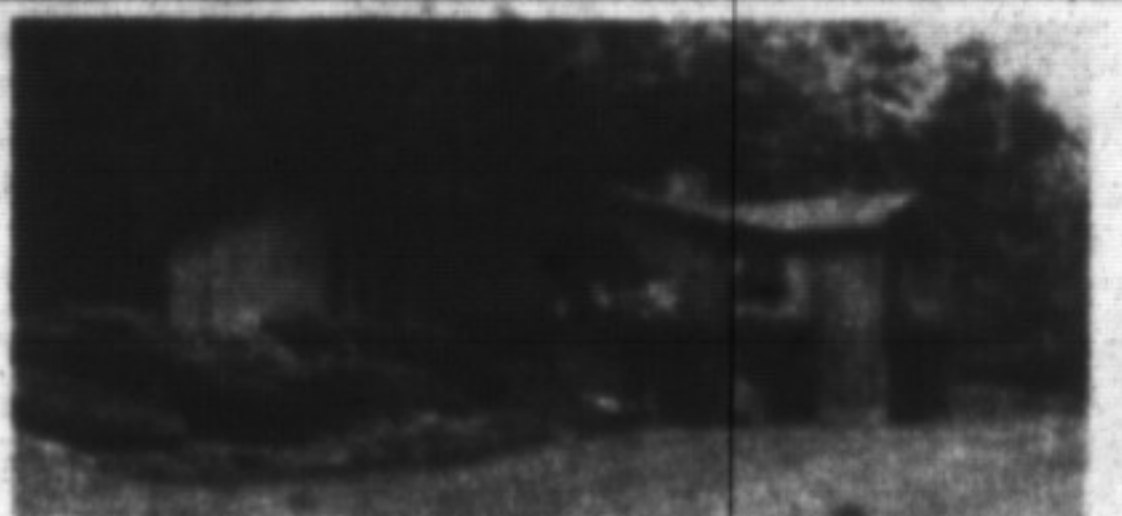
goes with this 4 bedroom home with huge greenhouse kitchen, main floor family room with fireplace and walk-out to 16x32 inground pool. Large formal living room and dining room plus main floor laundry and bath. 11.75% mortgage until Sept. 1993 plus Vendor will take back 2nd mortgage at below current rates. Call DIANE ROBINSON for further details at 878-8495 or 878-4393. Listed at \$314,900.



EAST BURLINGTON

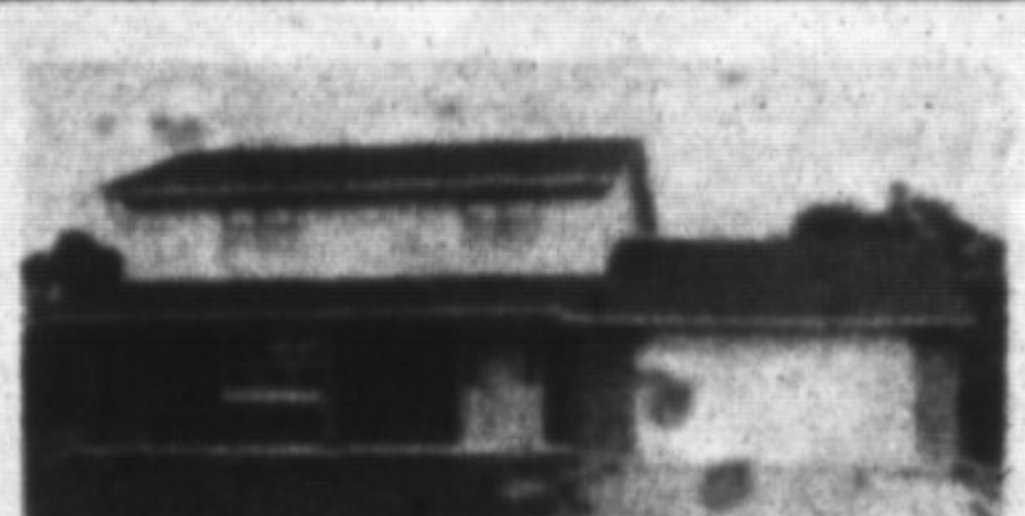
NOTHING COMES CLOSE TO IT

When you compare this lovely 3 bedroom home with others you've seen, yet it is close to everything, schools, churches, OEW, and GO Station. Bright eat-in kitchen with W/O to deck. Formal LR & DR. Main floor FR with FP and main floor laundry area. Master has full 4 pc. ensuite. Asking \$269,900.00. Call Diane Robinson to view 878-8495 or 878-4393.



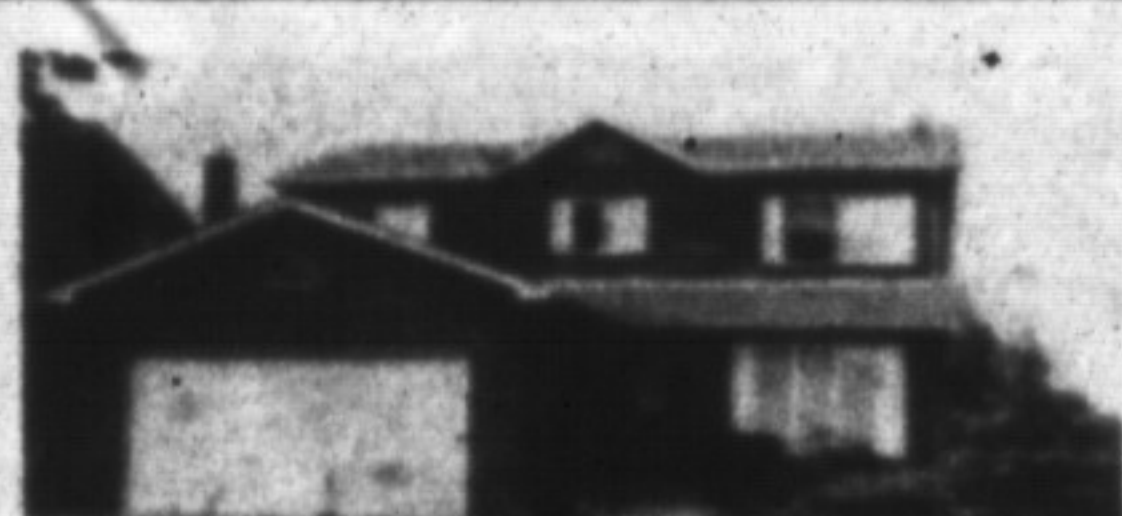
PRIVACY PLUS

Hot off the press, beautiful locations around this bi-level bungalow, located on 2.86 acres, has four bedrooms, two fireplaces, air conditioning, family room, three baths, whirlpool, central vac and attachments, heat pump and much more. Want to spoil yourself, try this home on for size, you'll see it fits. For more information, call JOSEPH MANCHISI at 878-8495.



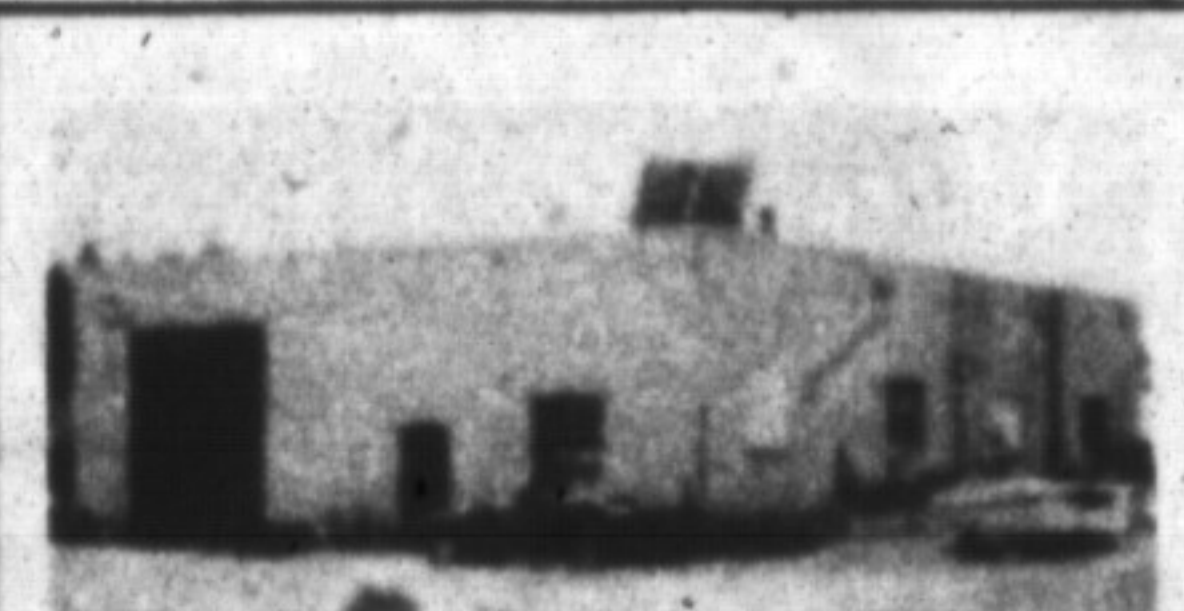
COUNTRY COMFORT

Modern family home on 2.91 acres of prime rural land-zoned FARM. Excellent investment potential. Suitable for hobby farm, ample space for equipment. Home features large principal rooms, excellent layout and design. \$349,000.00. Call NOVA SPARKS-AUSTIN at 821-4932.



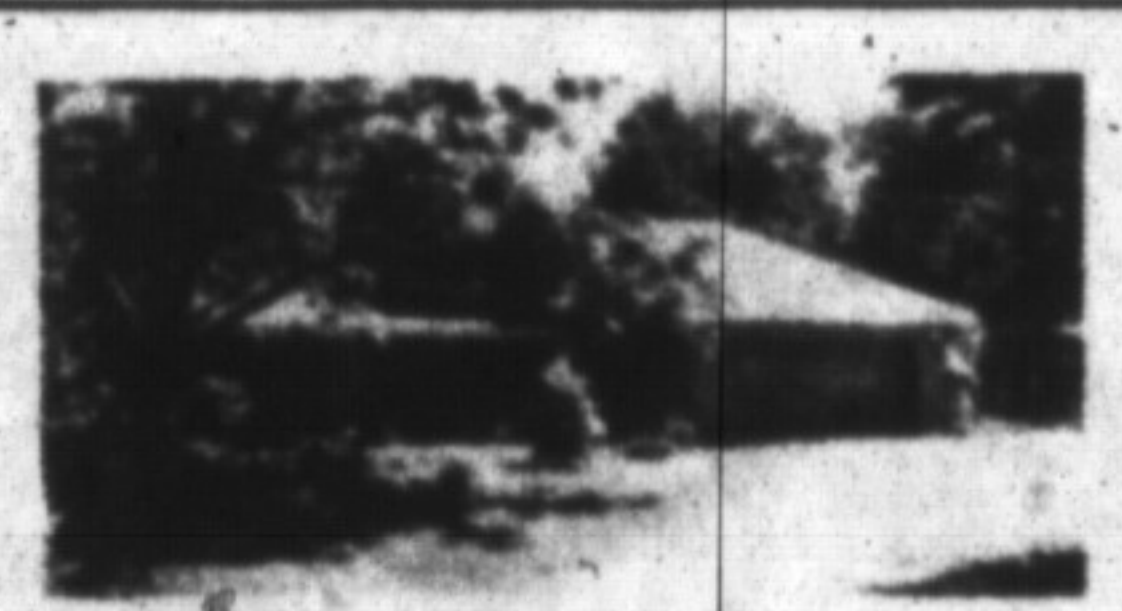
LOOKING GOOD

Four bedroom, separate dining room, living room, and family room with fireplace and walk-out to back yard. Professionally landscaped, and much more to offer. For more information call AL VOLPE at 878-8495.



A2 ZONING - \$279,900.00

More than just a storage building, includes 1-1/2 acres and more for your money. Could be just what you're looking for. Call AL VOLPE at 878-8495 for complete details on this property.



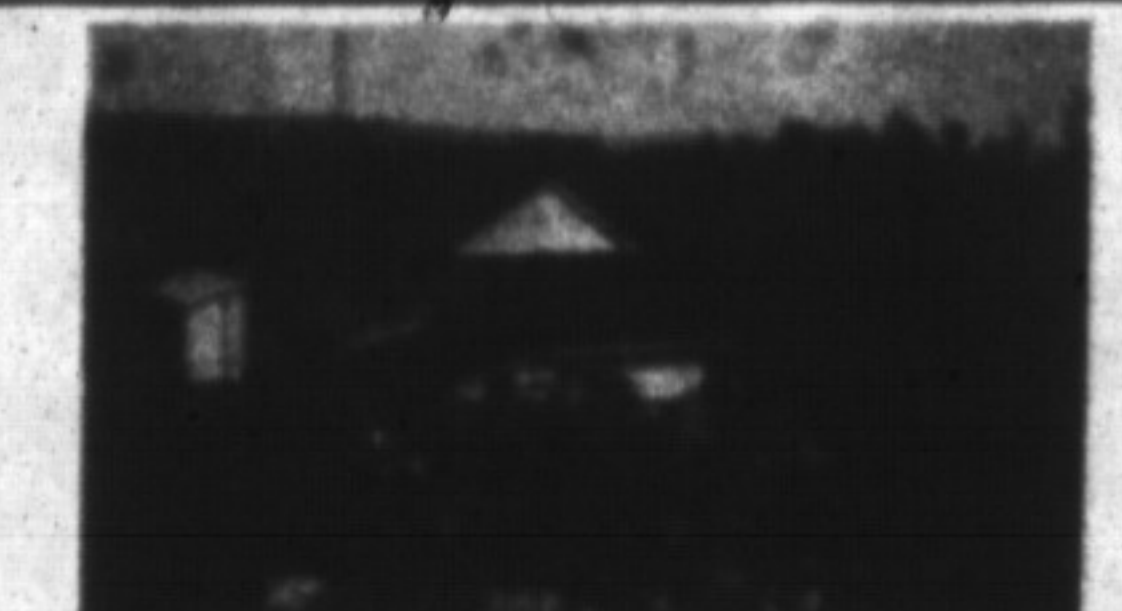
FINANCING NO PROBLEM

You can go anyway you like - Assumed, Conventional, VTB, on this beautiful 4 bed. country home with a lg. country kitchen, MF family rm. with FP, formal L.R. & D.R. and much much more. Call DIANE ROBINSON for viewing 878-8495 or 878-4393. Asking \$368,500.



PROVEN DOWNTOWN LOCATION

Here's 1200 Sq. Ft. in an ideal location, available immediately, and offering flexibility on leasehold improvements. Please dial 878-8495 and ask for JAMES D. SNOW.



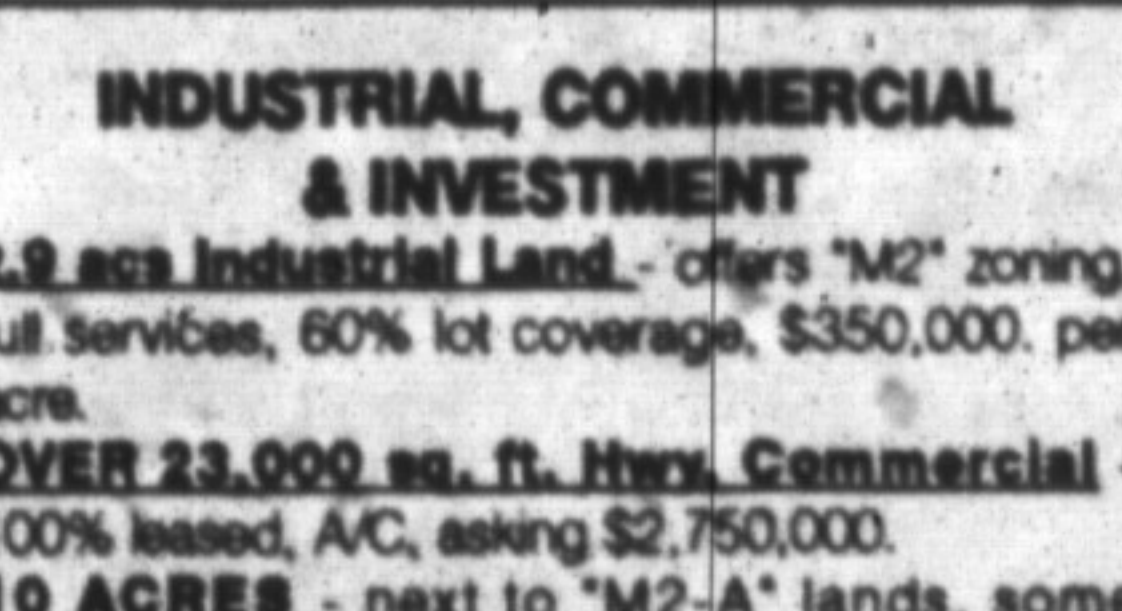
SEMI FOR \$145,900.

and situated on almost a half acre in the country, three bedrooms, finished basement, appliances and has fruit trees on property. Call RON TWISS for complete details at 878-8495.



RENT WITH OPTION TO BUY

Three bedrooms, upgraded broadroom, two baths, appliances included and single car garage. Vendor willing to assist. Call JOAN E. TATTRE at 878-8495.



INDUSTRIAL, COMMERCIAL & INVESTMENT

2.9 acre Industrial Land - offers "M2" zoning, full services, 60% lot coverage, \$350,000, per acre.
OVER 23,000 sq. ft. Hwy. Commercial - 100% leased, A/C, asking \$2,750,000.
10 ACRES - next to "M2-A" lands, some income now, ind. potential for specific use. Asking \$1,300,000.
Commercial Space for Lease - prime & proven locations in downtown Milton. Please call for more information.
Call James D. Snow, 878-8495.

BUSINESS FOR SALE

The Health Care House

Retail outlet for Healthcare products located in medical centre beside "Milton District Hospital". Good traffic area, main floor, good location, licensed "ADP" Vendor. Take over 5 yr lease for 900 sq. ft. Inventory available @ cost. Call DON PELZ for information 878-1029.

MOUNTAIN VIEW LOT

On five sideroad, minutes from the 401 on paved road in Halton Hills. Only \$139,900. and can be more than you bargain for. I can help assist with cost of building. Call AL VOLPE for more details at 878-8495.



GET CREATIVE

This unique stone house could open your imagination to great ideas. Located minutes to Milton and all other amenities. Asking \$285,000. Contact JOSEPH MANCHISI for more information at 878-8495.

Bill Gear 335-9689
Carlo Giangrande 876-1031
Diane Gibbons 335-5489
Paddy Gill 878-0085
Douglas Jones 878-4957

Charles Kerr 338-7248
Jim Kerr 878-8495
Lorraine Kerr 878-8495
William Lenizky 853-3797
Joe Manchisi 335-5489

Don Pelz 878-1029
Scott B. Prior 876-1251
Diane Robinson 878-4393
Paula Rasmussen 854-0176
James D. Snow 878-2172

Nova Sparks-Austin 878-6728
Joan Tattre 878-1575
Ron Twiss 878-4056
Al Volpe 827-9025
Sonja Williamson 875-1924

Office Staff: Marie Austen, Tracy Young, Elaine Stover

If you're looking for a choice home we offer a wide selection.

420 MAIN ST., MILTON
878-8495
Toronto Line 821-4764

Century 21.
We'll give our word to you.™

GOLDEN REAL ESTATE LIMITED