

The Canadian Champion, Wednesday, October 3, 1990—L88

Dateline

Dateline is a free listing of coming events only, available to local community groups to assist in promoting their future events. Only charitable or non-profit community groups may use this service. We can only guarantee one issue of publicity closest to the date of the occurrence although more insertions are possible if other demand is low.

Notices for Dateline should be written and handed in at the office of The Champion, 191 Main St. E., or mailed to us at Box 248, Milton, Ont., L9T 4N9. The first deadline is Friday at 5 p.m. for Wednesday's edition and Wednesday at 5 p.m. for Friday's edition. No items for Dateline will be accepted by telephone.

Thursday Oct. 4

The Milton and District Horticultural Society will leave on a one-day bus trip to Niagara Falls. For tickets see Charlie at Spice O'Life Card and Gift at Main and Charles streets. Space is limited.

The Women of Halton Action Movement (WHAM) will meet at 7:30 p.m. Anyone interested is welcome to attend. For further information and location, call Linda at 825-3999.

The Living with Cancer Group will meet at the Milton Branch of the Canadian Cancer Society, 751 Main St. E., from 7:30 to 9 p.m. Group discussions provide emotional support and, practical guidance to patient, family and friends. Call 878-5228 or 878-1876 for more information.

The University Women's Club will present guest speaker Marie Sutcliffe who will discuss the Sandwich Generation at Hugh Foster Hall at 7:30 p.m. Caught between aging parents and your children? What impact is this dual responsibility having on your life? Call Nova Sparks-Austin at 878-6728 for information.

Thursday Oct. 4-5

E.C. Drury High School will hold United Appeal Bake Sale from 11 a.m. to 4 p.m. in the staff cafeteria foyer. All proceeds will be donated to the United Way.

Friday Oct. 5

Spanish classes for adults will begin at 7 p.m. Call Lucy Hannant at 878-4978 or the Halton Board of Education's continuing education department at 333-3499 for more information.

Saturday Oct. 6

The Canadian Cancer Society's Helping Yourself Against Cancer program will begin at the organization's Milton Branch, 751 Main St. E. Participants will learn how to cope with the stress of having cancer. Pre-registration is required. For more information, call 878-1876 or 844-5819.

Tuesday Oct. 9

The Halton Regional Health Department will hold an immunization clinic at its Milton office, 251 Main St., from 3:30 to 7 p.m. For an appointment, call 878-7261.

Milton Women in Networking will present a fashion and beauty fair at the Muddy Duck Restaurant at 7 p.m. The event will include fashion shows and cosmetic and jewellery displays. Admission is \$8 for members and \$9 for non-members. For more information, or to become an exhibitor, call Karen Bandi at 878-1803.

Wednesday Oct. 10

Halton Waldorf School invites parents to attend a lively discussion on the importance of providing children with a challenging, yet balanced education, at Hugh Foster Hall at 7:30 p.m. For more information, call 854-0191 or 336-7368.

Mothers interested in information about breastfeeding are welcome to attend the next meeting of the Milton La Leche League. It will be held at 511 Beaver Ct. at 8 p.m. For more information, call 878-8803 or 877-4422.

Thursday Oct. 11

Native Canadian Walter Coles will speak on native issues and culture at Holy Rosary Parish Hall on Martin Street at 7:30 p.m.

Saturday Oct. 13

St. Paul's United Church, 123 Main

St. E., will present a one-day seminar called Making Meetings Matter from 9 a.m. to 3 p.m. The event will be led by Ann Fleming of the United Church of Canada. The seminar is open to club, group and church leaders interested in developing skills in planning meetings, setting agendas, and motivating committee members. Tickets purchased in advance cost \$8, or \$10 at the door. Lunch is available for \$4. Call Jim

Dills at 878-6061.

Monday Oct. 15

The Learning Disabilities Association of Halton will present speaker Dr. William Mahoney of Chedoke-McMaster Hospital. He will discuss behavioural and attentional difficulties in learning disabled children. The 7:30 p.m. event will be held at Lord Elgin High School, 1551 New St., in Burlington. For more information, call 634-0686.

tion, call 634-0686.

The Milton and District Horticultural Society will meet at Hugh Foster Hall at 8 p.m. Karen Michael of Country Lane Herbs will demonstrate how to make decorative wreaths and brooms with dried flowers and plant material. Everyone is welcome.

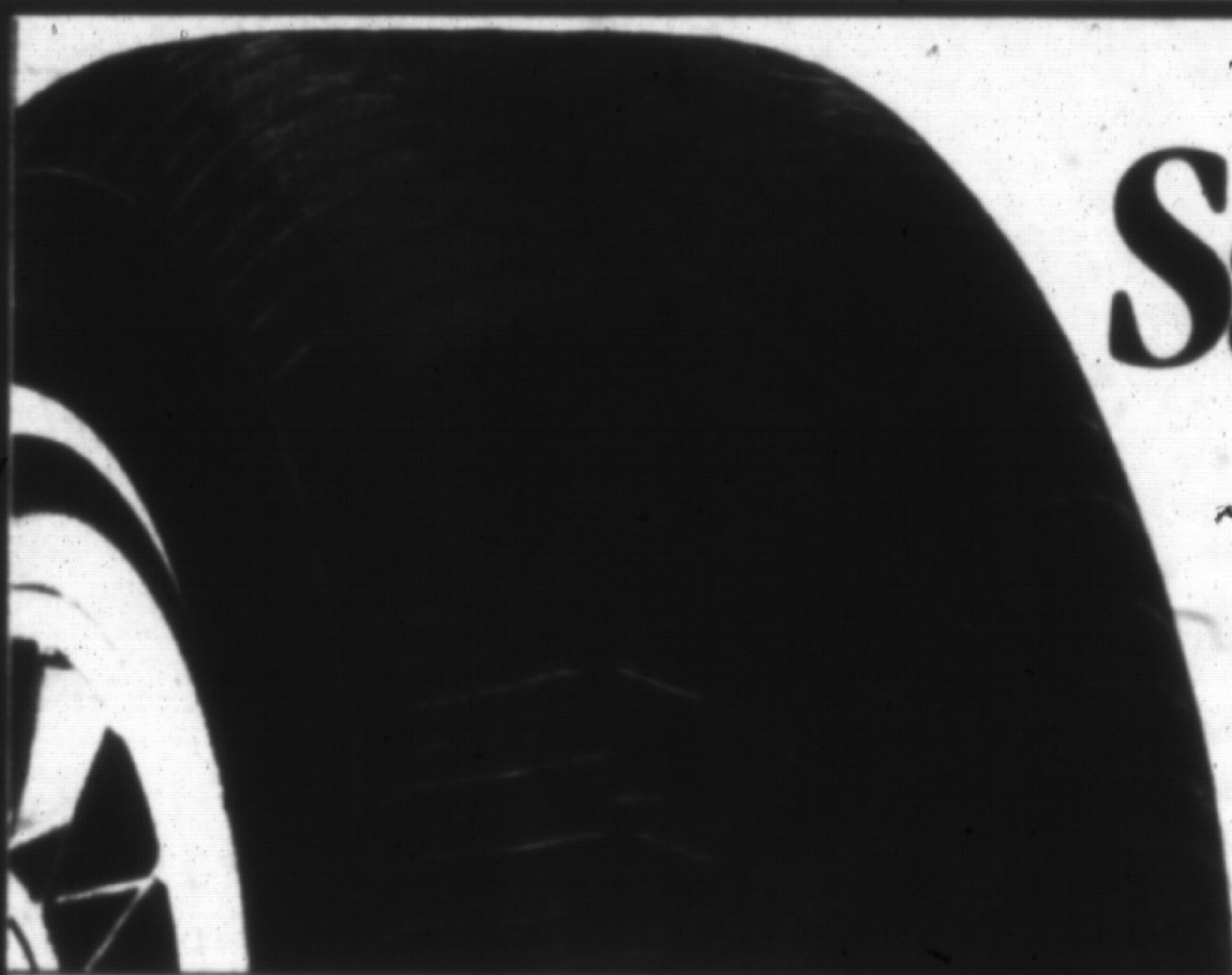
Tuesday Oct. 16

The Alzheimer's Family Support Group will meet at Halton Centennial Manor in the Pettit House from 7

to 8 p.m. Contact Yvonne Stupak at 878-4141 for more information.

Wednesday Oct. 17

Hilcrest United Church will hold its annual turkey supper. Tickets are available for three sittings at 4:45, 6 and 7:15 p.m. They cost \$8 for adults and \$4 for children aged 5 to 12 years. Children under 5 years of age will be admitted free. Call D. McNuff at 877-3750.



Save 33%

PREMIUM ALL-SEASON RADIAL VECTOR WHITEWALL

Size	Sale Price
P155/80R13	\$ 66.99
P185/80R13	87.09
P185/75R14	90.44
P195/75R14	92.45
P205/75R14	97.81
P205/75R15	104.51
P215/75R15	108.53
P235/75R15	119.92
P185/70R14	101.83
P205/70R14	107.19

25 Off

LOWEST PRICED PERFORMANCE RADIAL EAGLE ST

RAISED WHITE LETTERS

Size	Sale Price
P175/70R13	\$ 77.99
P205/70R14	97.49
P215/60R14	98.24
P225/70R15	109.49
P215/65R15	103.49
P245/60R15	118.49

25 Off

LUXURY TOURING RADIAL EAGLE GA

BLACK SERRATED LETTERS

Size	Sale Price
P195/70R14	\$110.99
P215/60R14	119.99
P215/65R15	126.74
P215/60R16	127.49
P235/55R16	149.24



25% to 33% off

THE FAMOUS RAIN RADIAL CUSTOM POLYSTEEL

Size	Sale Price
P155/80R13	\$43.54
P175/80R13	53.99
P185/80R13	54.74
P185/75R14	54.93
P195/75R14	56.27
P205/75R14	58.95
P205/75R15	61.63
P215/75R15	71.99
P225/75R15	76.49
P235/75R15	73.02

25 Off

ALL-SEASON RADIAL ARRIVA WHITEWALL

Size	Sale Price
P155/80R13	\$53.99
P185/80R13	62.99
P195/75R14	75.74
P205/75R15	86.24
P235/75R15	97.49
P185/70R14	83.99
P205/70R14	88.49

SHOP & COMPARE EVERYDAY LOW PRICED ALL-SEASON RADIAL S4S WHITEWALL

Size	Everyday Low Price
P155/80R13	\$44.99
P195/75R14	59.99
P205/75R14	68.99
P205/75R15	68.99
P215/75R15	72.99
P225/75R15	81.99

Vector and Polysteel clearance priced while supplies last. All other prices in effect until October 6. Call for prices on sizes not shown.

GOODYEAR

TAKE ME HOME

NO CASH DOWN • NO INTEREST • 6 LOW MONTHLY PAYMENTS*

*Oil lube and mechanical services exceeding \$150.00. Payment is calculated on a 6 month deferred plan using VISA, MasterCard or American Express card. Available at participating Retailers only. Visit your local Goodyear Retailer for details.



SAVE \$29.⁰⁰ A/C EVACUATE AND RECHARGE \$59.⁹⁵

Includes Freon

Oil, Filter & Chassis Lubrication

SPECIAL \$21.95

Includes Up to 5 Litres of Quaker State 10W30 Oil



45 Ontario St.N.,
Milton

CERTIFIED AUTO SERVICE CENTRE

875-1502

OPEN 7:00 A.M. to 6:00 P.M. MON to FRI - SAT 7:00 A.M. to 5:00 P.M.