

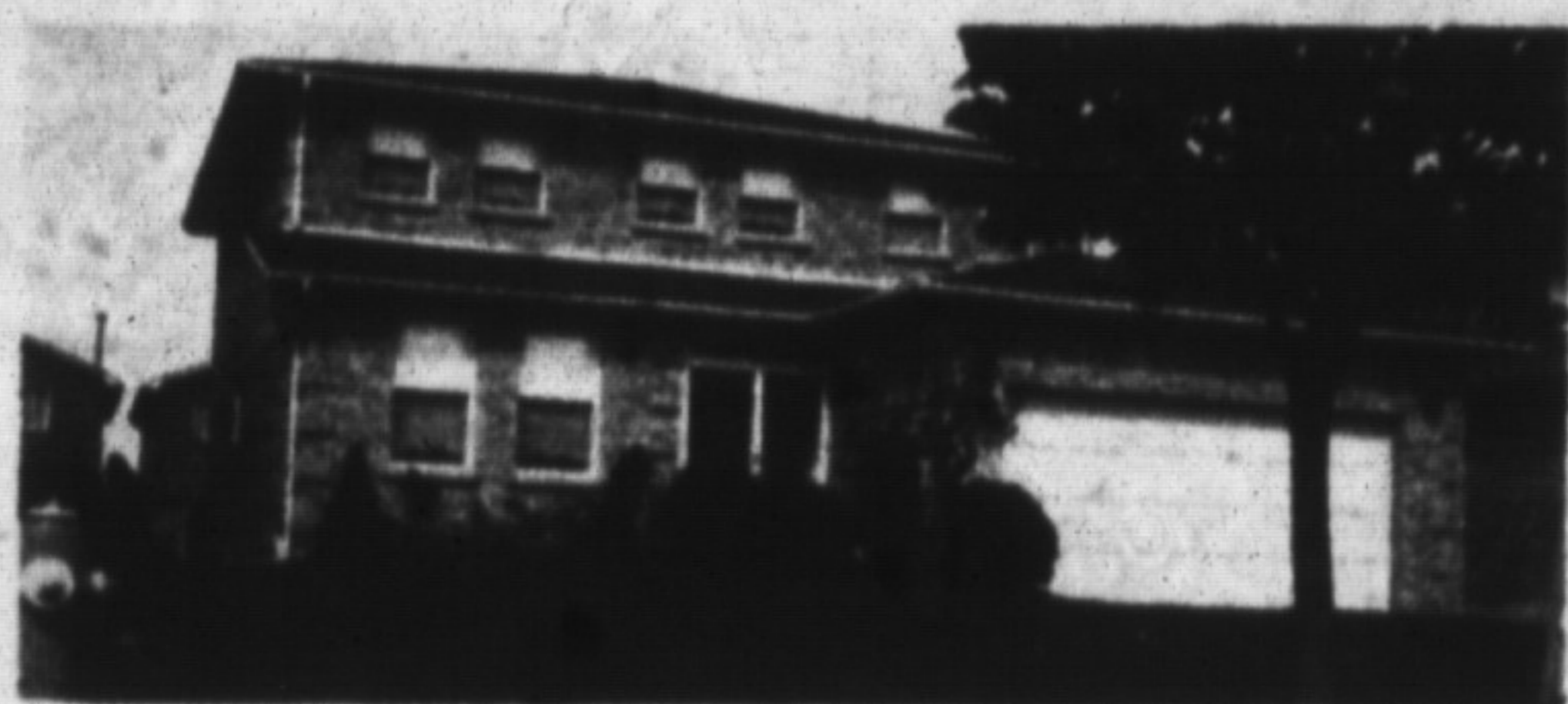
# BEST HOMES

ALSO REACHING MISSISSAUGA, OAKVILLE, BURLINGTON, GUELPH & CAMBRIDGE

The Canadian Champion

Milton, Ontario

September 26, 1990



### UNBELIEVABLE BUT TRUE!

Four bedroom executive home with main floor family room & laundry. Bargain priced at \$249,900.

ROYAL CITY REALTY LTD.  
STEVEN J. PORTER 878-1156



### PRETTY AS A PICTURE BUNGALOW

Located on private oversized lot, mature trees, nice neighbourhood, inground pool. Beautifully finished rec. room, 3 bedrooms & hardwood floors. Now asking \$194,900.

COUNTRYWIDE CAMPBELLVILLE REALTY INC.  
HEATHER ASHBEE 864-2294



### THE RIGHT ADDRESS: \$285,900.

This 4 bedroom, 2 storey exec. home offers lrg. spacious rms., main floor laundry rm., fam. rm., 2 patio walkouts, double garage, plus cen. vac., cen. air, & so much more. Create your own statement in quality living. Call today.

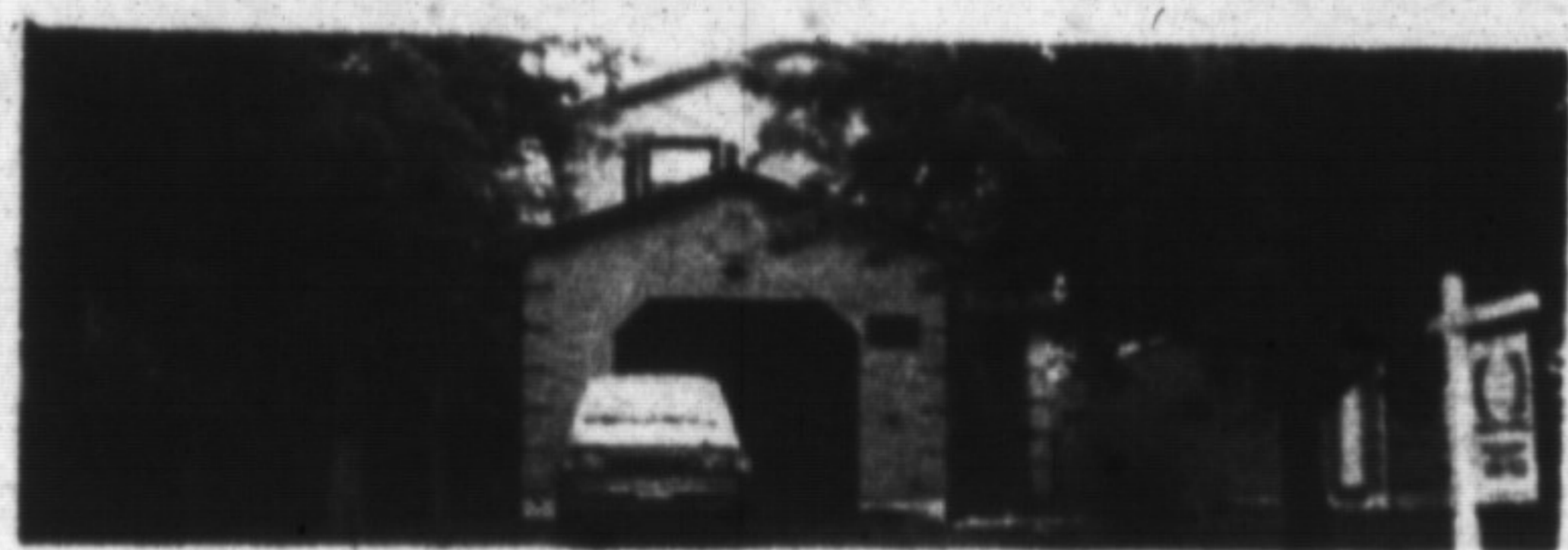
ROYAL LEPAGE REAL ESTATE  
JOYCE HAGEVIK 878-8101



### REDUCED DRASTICALLY FROM \$650,000. TO \$550,000.

Vendor most anxious to sell this bi-level bungalow, situated on 2.86 acrs, has four bedrooms, two fireplaces, air conditioning, whirlpool and much more. Call for a complete list of extras.

CENTURY 21 GOLDEN REAL ESTATE INC.  
JOSEPH MANCHISI 878-8495



### MOVE IN BY HALLOWEEN!!

And the kids can trick or treat in this quiet family neighbourhood. Walking distance to schools & shopping. Minutes to GO & 404. 3 generous bedrooms, master has semi-ensuite, sep. dining room, galley style kitchen & oversize garage. Very affordable at \$184,900. Call for your appointment. #51

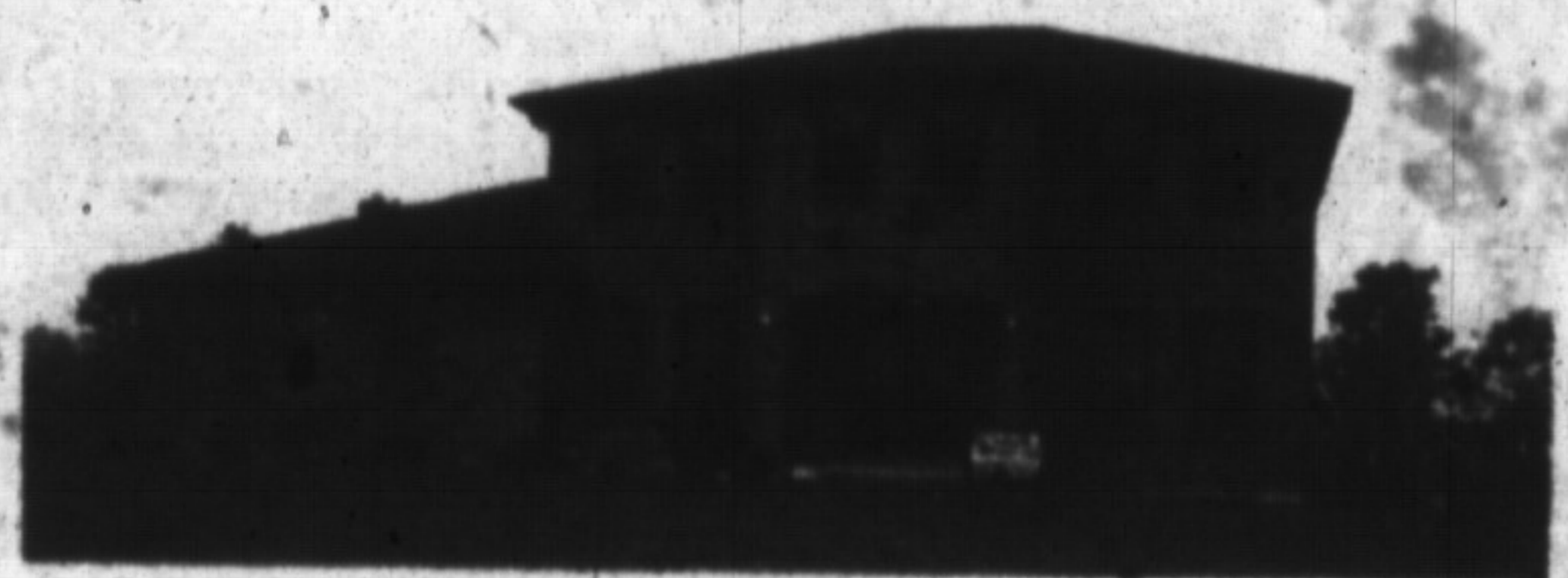
REALTY WORLD - W. J. McCRUDDEN REAL ESTATE INC.  
BARBARA MALLALIEU 878-1133



### DORSET PARK \$209,000.

Spotless 4 bedroom home in well established neighborhood, 5 mins. from Go station. Close to all amenities. Great lot with an inground pool 28 ft. x 14 ft. and a sunroom. Also has 2 full bathrooms & a woodstove in the recreation room. Please call for your viewing appointment.

RE/MAX MILTOWNE REALTY CORP.  
JEFF WRIGHT 878-2365



### GEORGIAN

This beautiful centre hall plan offers up an executive home finished in grey tile, white-trim and rose coloured broadloom. Located in a prestigious estate subdivision of Campbellville. This home will capture your heart with its warmth. It's a must to see! \$405,000-

RE/MAX MILTOWNE REALTY CORP.  
MAURICE MILJOUR 878-2365



### REDUCED FROM \$149,900. TO \$139,900.

WHY? Because owners must move by October 30th, 1990. So act now, this lovely 3 bedroom townhouse has been freshly decorated throughout. Fridge, stove, washer & dryer are included. Walkout from living room to deck and a very private patio. Please call for your viewing today.

RE/MAX MILTOWNE REALTY CORP.  
STELLA HALL 878-2365