

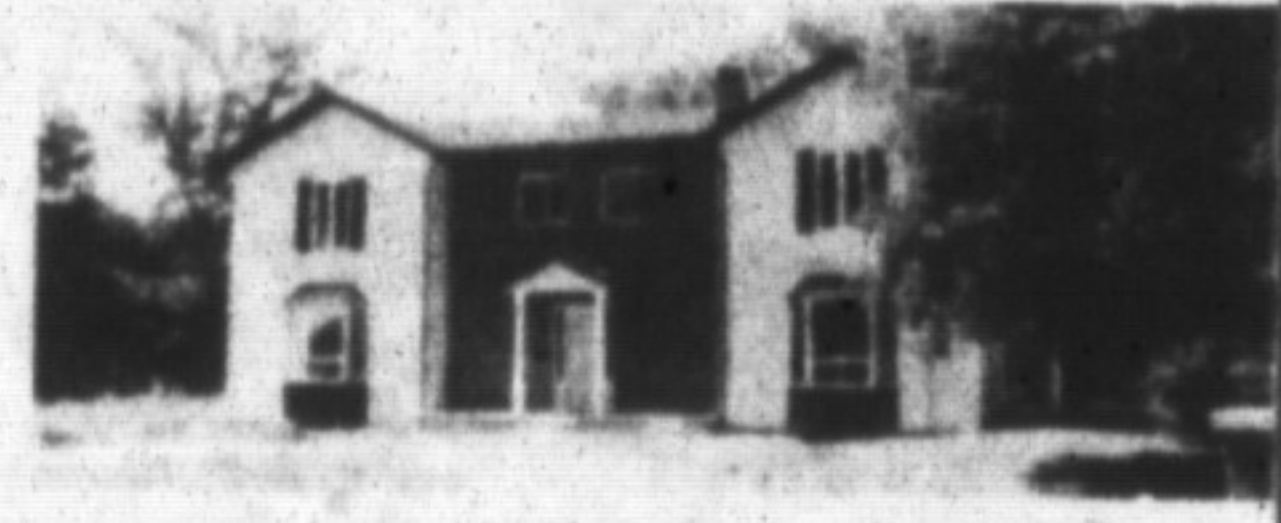
Real Estate

CHRISTIE & WOODS REAL ESTATE LTD.

189 Main Street, Milton 878-2095

OPEN HOUSE

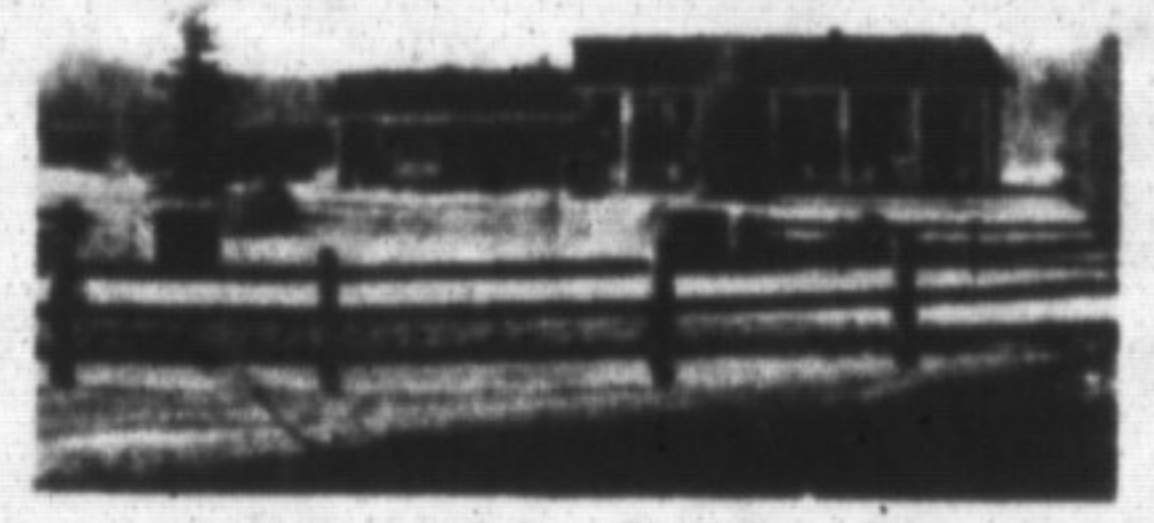
Sun., Sept. 23 2-4p.m.
54 First Line, Campbellville



EXCLUSIVE LISTING
2500 SQ. FT. OF GRACIOUS LIVING
4 large bedrooms plus a nursery. Oak is abundant in this brand new home from cupboards to baseboards. There is a brick fireplace in the large family room, and a maple floor in the dining room with many more classical touches. This home sits on a 150'x150' lot on town water is attractively priced and for your personal showing call Marg Christie 878-2095 or 875-2443.

OPEN HOUSE

Sun., Sept. 23 2-4p.m.
7324 Twiss Rd.



COUNTRY RANCHER
Brick raised ranch, 2 car garage on 3/4 acre lot. Patio-deck, eat-in kitchen and living room with fireplace. Walkout basement with finished rec. room and 2nd fireplace and two extra bedrooms, to view this 5 bedroom home, call Yvonne Christie 878-2095.

OPEN HOUSE
Sun., Sept. 23 2-4p.m.
730 Robertson



\$289,900.

Large brick, 4 bedroom home on huge lot, backing onto parkland, warm, comfortable fam. room w/stone fireplace, 3 large baths, main floor laundry has walkout, large kitchen. Best location. Was \$329,900 NOW \$289,900.

Was \$329,900.

CHRISTIE & WOODS REAL ESTATE
TIM NEVINS 878-2095

Owner must sell

Yvonne Christie Broker Owner 878-2095

Tim Nevins * 875-1263 Cameron Gall * 876-2856
Allan Christie * 878-2095 Margaret Christie * 875-2443
* Sales Rep.

Country Lovers



Two Acre Lots

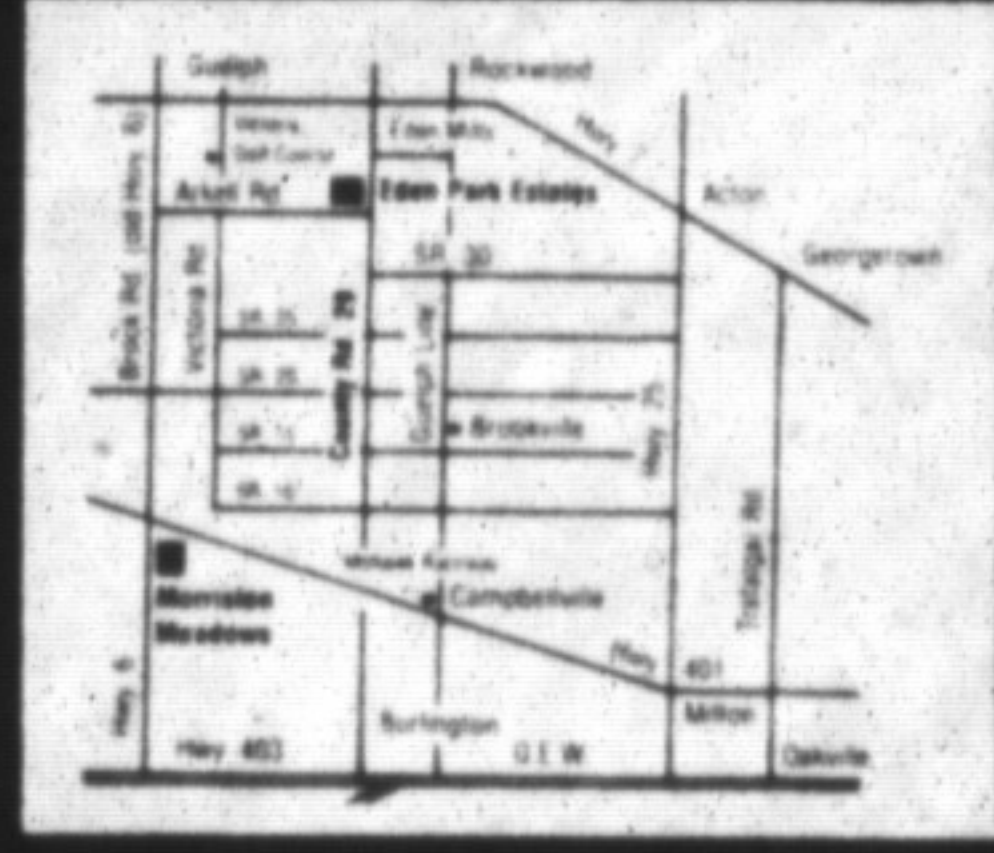
Make your home a piece of Ontario's heartland... the serenity of one of our limited, executive class homes enhanced by extensive natural tree cover in EDEN PARK ESTATES. So beautiful, so convenient...

11 1/4% - 2 yrs.
some conditions apply

Model Home Open
Sat. & Sun. 1 - 5 pm
(519) 856-1220
30 minutes west of Mississauga

For more information call:
Cheryl Chamula representing
Bishop Estate Homes
(519) 824-9701, pager #92104

Irene Pries representing
Royal City Realty, Halton Ltd.
(416) 450-9344



Freeman COMMERCIAL



A Freeman Real Estate Company Inc. - Broker

842-8690 878-4380 (res.)



Marilyn Andrews

INDUSTRIAL COMMERCIAL INVESTMENT SPECIALISTS

INDUSTRIAL FOR LEASE
• 15,000 sq. ft. D.L. and D.I., 18' Clear, Finished to Suit, can be divided from 5,000-10,000. Asking \$4.50 Net Net
• 2,000-10,000 sq. ft., 21' Clear, New Prestige Building, Mezzanine. Asking 5.00 Net Net. Available For Sale.
• 2,000 sq. ft., Close to Auto Auction, D.I. Door Asking \$5.00 Net Net
• 2800 sq. ft. 2 D.I. Doors, Excellent Location at Main/Thompson Asking \$5.00 Net Net
• 2,000 sq. ft., Main Street, D.I. Door Asking \$4.25 Net Net
• 2,000 sq. ft. D.L. Door, Good Office space. Asking \$4.25 Net Net

1981 RATE FOR FIRST YEARS - \$2.95 NET NET
30,756 sq. ft., free standing bldg on 1.6 acres, 6D.L., D.I., 21' Clear, Good warehouse and manufacturing. Purchase possible.

INDUSTRIAL FOR SALE

1 Acre, Nipissing Road. Approval for 15,000 sq. ft. condo. Fully Serviced Asking \$365,000.
14 Acres, 401 Exposure, Fully Serviced, Outside Storage \$265,000. per acre

3 Acres, Outside Storage, Close to 401 Asking \$265,000 per acre
Sites Available from 1 Acre +-
19,000 plus sq. ft. Free standing, Speers Rd Oakville \$995,000.

COMMERCIAL



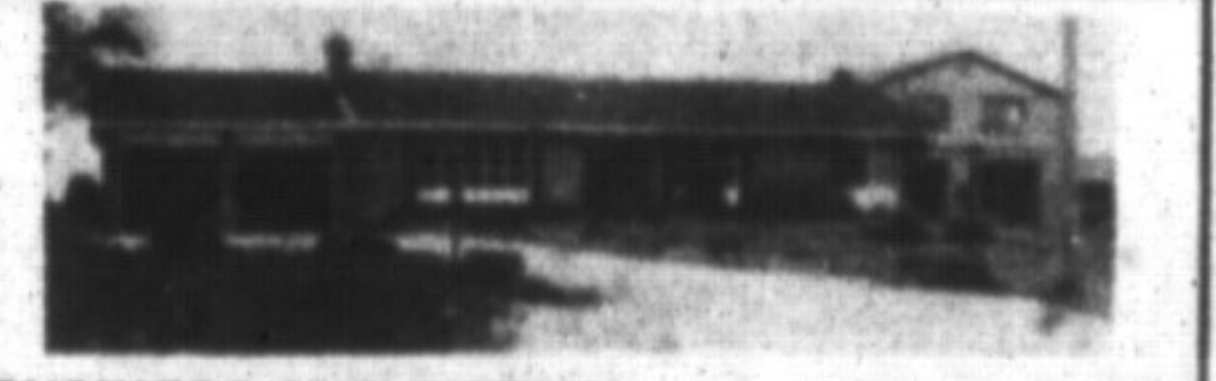
500 STEELES AVENUE

Fantastic location across from Court House 7735 sq. ft. building with plenty of parking. Asking \$890,000. Lease for \$10.00 Net Net. Ideal site for fruit/veg. market.



24 BRONTE STREET

50x100 ft. lot with brick home. Great location at Bronte/Men for professional office. Asking \$275,000.



BUSINESS AND RESIDENCE - ONE ADDRESS

Very attractive 1800 sq. ft. brick bungalow plus NEW 6000 sq. ft. industrial bldg. on .77 acre M2A zoned. Minutes to James Snow/401. Reduced to \$795,000.

3.3 acre rural industrial site includes 4800 sq. ft. plus industrial building, 5 bedroom, 2100 sq. ft. brick bungalow. Prime location close to 401 and Winston Churchill. Asking \$950,000.

Prime 2 acre parcel within Milton's planned industrial park. Steel barn plus brick bungalow. Asking \$600,000. Capitalize on this investment sight.

BUSINESS AND REAL ESTATE FOR SALE

Plumbing and Heating Business well established with very attractive growth prospects. Operating 40 years in Milton. Fully equipped. For full information, contact Walter Jennings 842-8690.

147 Mary Street and 146/148 Main Street includes a residential home plus 2 sheds on a 66 x 132' lot. Main Street contains a 3500 sq. ft., 2 storey brick building with 2 apts. plus 2 commercial units on a 36' x 132' lot. Asking \$730,000 or can be sold separately. Good redevelopment potential.

I CAN FIND THE SPACE YOU REQUIRE!
This is not intended to solicit properties currently listed with other brokers.

FURLONG COLLINS GUNDING

BARRISTERS & SOLICITORS

Ask us if you need a lawyer

878-8123

Ask us if you need a lawyer

BANKS	VARIABLE RATE	6 MONTHS	1 YEAR	2 YEARS	3 YEARS	4 YEARS	5 YEARS
Cdn Imperial	14 1/2 wop	13 1/2 wop	13 1/2 wop	13 1/2	13 1/2	13 1/2	13 1/2
Bank of Montreal	13 1/2 wop	13 1/2 wop	13 1/2 wop	13 1/2	13 1/2	13 1/2	13 40
Laurentian Bank	n/a	14 1/2 wop	14 1/2 wop	13 1/2	13 1/2	13 1/2	13 1/2
National Bank	n/a	14 1/2 wop	14 1/2 wop	13 1/2	13 1/2	13 1/2	13 1/2
Bank of N. S.	14 1/2 wop	13 1/2 wop	13 1/2 wop	13 1/2	13 1/2	13 1/2	13 1/2
Royal Bank	14 1/2 wop	13 1/2 wop	13 1/2 wop	13 1/2	13 1/2	13 1/2	13 1/2
Toronto-Dominion	14 1/2	13 1/2	14 wop	13 1/2	13 1/2	13 1/2	13 1/2
TRUST COMPANIES							
Cabot Tr.	n/a	14 wop	14 1/2 wop	13 1/2	13 1/2	13 1/2	13 1/2
Canada Trust	14 1/2 wop	13 1/2 wop	13 1/2 wop	13 1/2	13 1/2	13 1/2	13 1/2
Central-Guaranty Trust	14 1/2	13 1/2 wop	14 wop	13 1/2	13 1/2	13 1/2	13 1/2
Co-operative Trust	n/a	13 1/2 wop	13 1/2 wop	14 wop	14 1/2 wop	13 1/2	13 1/2
General Trust	n/a	15 wop	14 1/2 wop	13 1/2	13 1/2	13 1/2	13 1/2
Guardian Trust	n/a	13 1/2 wop	13 1/2 wop	13 1/2	13 1/2	13 1/2	13 1/2
Household Trust	n/a	13 1/2	13 1/2	13 1/2	13 1/2	13 1/2	13 1/2
Montreal Trust	n/a	14 wop	14 wop	13 1/2	13 1/2	13 1/2	13 1/2
National Trust	14 1/2	13 1/2	14 wop	13 1/2	13 1/2	13 1/2	13 1/2
Premier Trust	n/a		14 wop	13 1/2	13 1/2	13 1/2	13 1/2
Prenor Trust	n/a	13 1/2 wop	13 1/2 wop	13 1/2 wop	13 1/2	13 1/2	12 1/2
Royal Trust	n/a	13 1/2 wop	14 wop	13 1/2	13 1/2	13 1/2	13 1/2
Standard Trust	n/a	13 1/2	14	14	14	14	13 1/2
Cuna Credit Union	14 1/2 wop	14 wop	14 wop	13 1/2	13 1/2	13 1/2	13 1/2
Jet Power Credit Union	n/a	14 wop	13 1/2 wop	R.O.R.	R.O.R.	R.O.R.	R.O.R.

NOTES: ** Interest rate charged subject to adjustment during term of mortgage. Please consult institutions for term of years available.
R.O.R. - Rates on request R/O-Renewals only
op-Open N/A-Not applicable
...Not quoting

RATES TAKEN:
SEPTEMBER 14, 1990
Fiscal agents specialize in trust and loan investments, and also supplies free consumer information on these investments. Phone: 844-7700.