

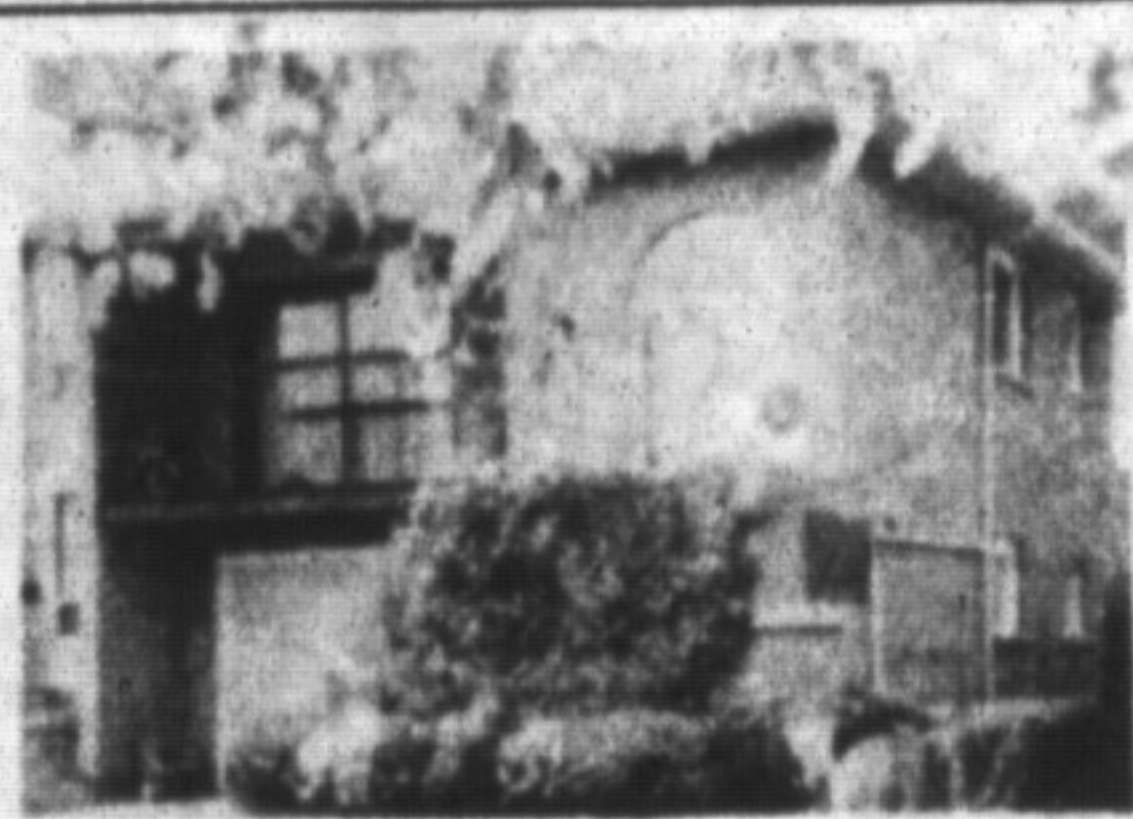
# RE/MAX

## Miltowne Realty Corp.

"Locally owned and operated - #1 in Home Sales Since 1983"  
 22 Ontario St. South 878-2365

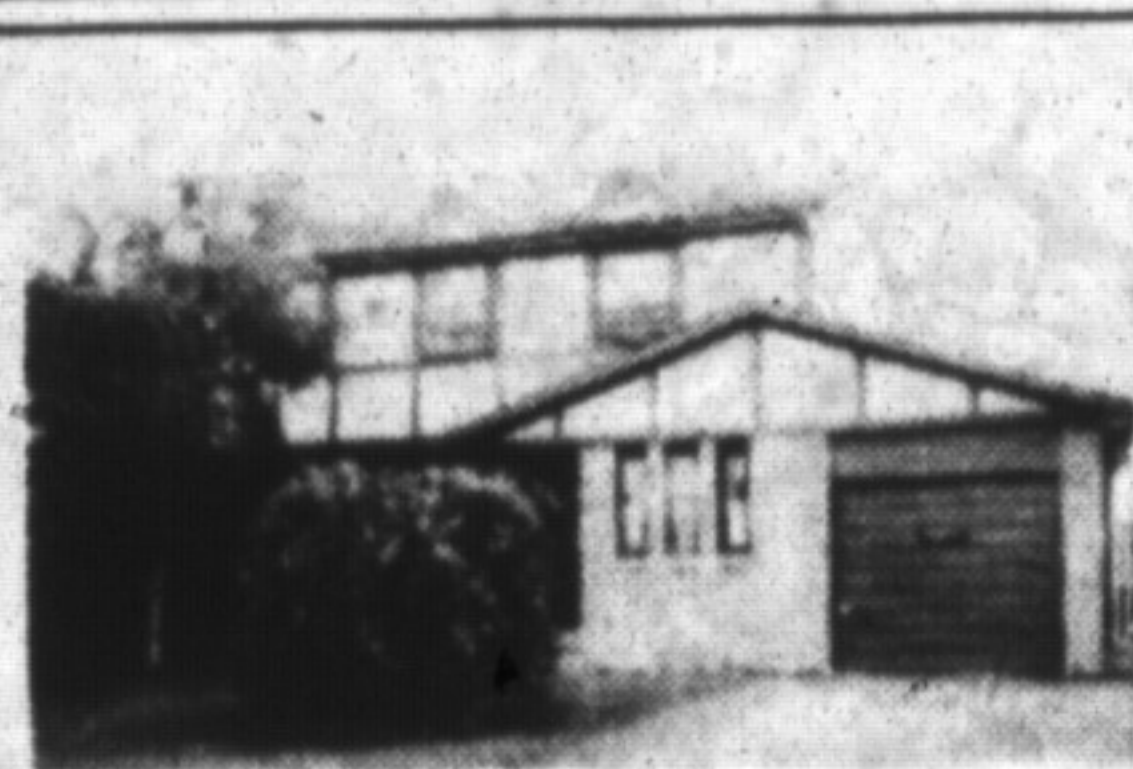


**JEAN SNOWDEN**  
 878-2365  
 878-3155  
 Sales Representative



**WE'VE PUT IT ALL TOGETHER**

This spacious home offers a big eat-in kitchen, family room with fireplace, den/4th bedroom, hobby room, private yard with deck & entertainment area. The central air and central vacuum are a great bonus. \$209,000.



**LOOKING FOR SOMETHING SPECIAL? READ ON...**

In a desirable area backing to parkland. This home offers 4 bedrooms, family room, 3 bathrooms and 3 fireplaces. Need to know more? Call Jean. Reduced to \$205,000.

*Above the Crowd!*



8  
7  
8  
-  
2  
3  
6  
5



**RENÉE HARROLD**  
 Sales Representative  
 Office: 878-2365  
 Tor: 826-1030  
 Res: 878-4526



**SIMPLY ONE OF THE BEST \$157,500.**

Large 11-3/4% mtg. till 1993.  
 4 bdrm. end unit w/ large deck.  
 Includes stove, fridge & D.W.  
 Finished bsmt. & workshop.  
 Bright & well-decorated.  
 Don't miss this one. Call Renée Harrold



**ENGLISH COUNTRY GARDEN**

Plus beautifully kept 3 bdrm. bungalow w/full inlaw suite. Features hardwood floors, high eff. furnace, cen. air, cen. vac & much more. Action priced at \$189,900. Renée Harrold.



**JEFF WRIGHT**

SALES REPRESENTATIVE  
 OFFICE: 878-2365 TORONTO: 826-1030  
 RES: 878-5110



**REDUCED FOR ACTION!**

Now only \$749,900. Over 8600 sq. ft. industrial zoned M1. Includes 3 separate offices & warehouse space. Building is divided into 2 x 3000 and 2600 sq. ft. plus electrical room. 18' ceilings. 1 acre lot allows for expansion potential. Lot is fenced and paved. Some financing is available. Call now for more information.



**DARE TO COMPARE! \$239,900.00**

For this low price you get: Super large split level home • Private yard with inground pool • Two car garage • Family size kitchen • Main floor family room & den • 3 plus bedrooms • Full size basement with hot tub. Don't miss this opportunity to get the most value for your hard earned dollar. Call me now for your personal viewing appointment. Ask for Jeff Wright.



**COUNTRY LIVING WITH A PANORAMIC VIEW!**

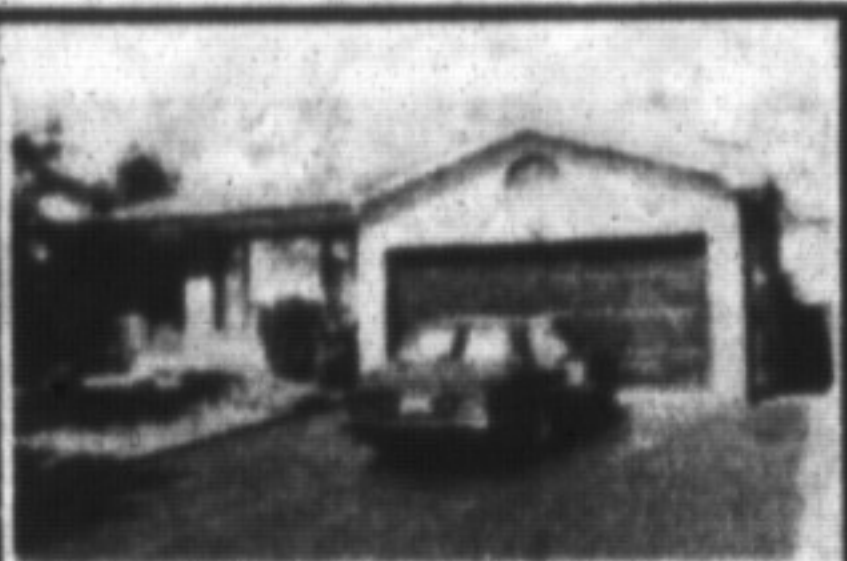
Treat yourself to the beautiful property. Over 64 acres of gently rolling fields & forest. Custom built home overlooks the magnificent property giving a full panoramic view. Completely finished with 3 bedrooms, country style kitchen, living & dining room, recreation room, office & much more. Also includes large barn & bank barn. Must be seen to be appreciated. Located on the outskirts of Kildee. To view this property please call Jeff Wright. Price \$1,200,000.00.



**RE/MAX**



**Gary Thomas**  
 Broker/Owner  
 878-2365  
 Res: 335-8888  
 Tor: 826-1030



**THIS IS THE ONE...**

you have been waiting for! An excellent split-level home in an attractive neighbourhood. Just phone and we'll have a look at the "First Rate" interior — 2 bathrooms, 3 bedrooms, den, family room, fireplace, recreation room and more. Check out the new garage door with opener, new eavestrough, and water softener. We'll also see the fully fenced yard with patio. For a super deal, call Gary! \$224,900.



**IT'S AN "ESTATE" OF MIND**

Yes, if you have an estate in mind, perhaps you should consider this well landscaped beauty situated on 2.25 acres close to Milton. Classic styling accentuates the spacious interior with 4 bedrooms, 3 bathrooms, main floor laundry, family room, fireplace and den. A covered deck leads out to wrought iron fencing surrounding the inground "Marbelite" pool. If refined estate living is part of your plans then call Gary Thomas \$685,000.

**LOTS • LOTS • LOTS !!!**

Beautiful estate lots are now available for your future dream home just a few minutes west of Milton. Have all the pleasures of country living plus the convenience of paved roads, street lights, natural gas and cable TV. Ready for building... Act now!! Contact Gary Thomas.



**Carole Stonhill**  
 876-4913  
 Res. Sales Rep



**Stella Hall**  
 878-4339  
 Res. Sales Rep

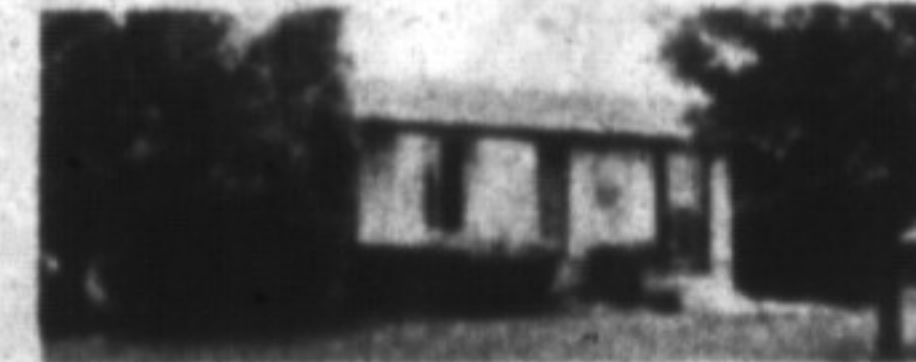
Office 878-2365

**"It's time to take a drive"**

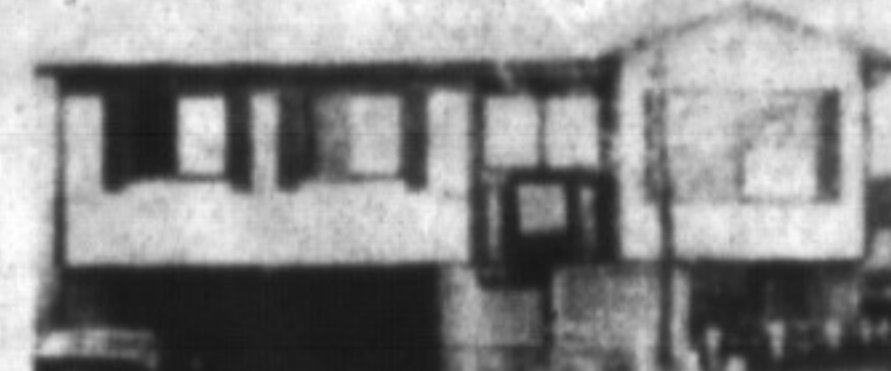
and take advantage of the reductions on these fine homes at prices for every pocket book.



REDUCED \$249,000.  
 905 CEDARBRAE



REDUCED \$195,900.  
 43 LORNE SCOTS DRIVE



REDUCED \$199,900.  
 597 JOYCE



REDUCED \$369,900.  
 712 ROBERTSON CRES.

**TOWNHOUSES**

415 ONTARIO ST.  
 481 PITFIELD #24  
 BOTH PRICED AT \$149,900.



REDUCED \$241,900.  
 874 PEAREN AVENUE



**RICHARD HIERMAN**  
 Sales Representative  
 Office 878-2365  
 Toronto 826-1030  
 Residence 878-5806



**GREAT FAMILY HOME**

3 bedrooms, 2-1/2 baths, country kitchen and main floor laundry are just some of the features of this brick Canadiana farmhouse complimented by 20 gently rolling acres with barn and outbuildings. \$499,000.