

New ball diamond coming

A prison may see Milton's baseball players free.

The players have been trapped for years by an ever-expanding list of teams demanding playing time at Milton's only full-sized hardball diamond — Brian Best Park. That will change for the 1991 season.

Monday night municipal council approved spending \$10,000 to grade and seed a full-sized diamond on the sprawling grounds of Maplehurst Correctional Centre, the medium security jail on Highway 25 near Highway 401.

The Ministry of Correctional Ser-

VICES has agreed to lease the land to Milton for a diamond. Although the ministry reserves the right to cancel the lease with six months notice, "my personal opinion is that we will be there for five or 10 years or as long as Maplehurst is there," said town director of leisure services Larry Arbic.

In addition to the \$10,000 for work to be carried out this fall, a further \$20,000 to \$25,000 will be required in early 1991 for a backstop, fencing and bleachers, Mr. Arbic said.

The Deputy Minister of Correctional Services, Robert McDonald, tenta-

tively agreed to the plan when he appeared before council earlier this year to announce the expansion of the Maplehurst complex.

Baseball players have been demanding a solution for some time. Originally they had hoped to have lights installed at Brian Best Park, at an anticipated cost of approximately \$130,000, but that plan was scrapped.

The ground at Brian Best Park is unstable and riddled with methane gas deposits created as garbage decomposes. The park was built over a former dump site.

Pipe problems

• from REGION on page 4

about rust in their water from old pipes.

Their presentation included several incriminating jars of murky looking tap water.

Halton treasurer Joe Rinaldo responded that it makes financial sense to plan for future growth.

That way, he explained, if infrastructure improvements have to be made the costs can in part be passed on to developers, and ultimately future residents, through lot levies.

Otherwise, he said, such costs have to be picked up by existing ratepayers.

Councillor Oliver was unconvinced, responding that "new growth costs money."

The Dickens

**THURSDAY SPECIAL
LASAGNA
with Garlic Bread.
\$5.95**

**MILTON
SPORTS TEAMS**

Bring the team in after your game &
we'll give you a
FREE BASKET OF WINGS
(Ask your server for details)

**189 MILL ST.
878-6680**

FRONTE ST. MARTIN ST.

MILL ST. DICKENS

MAIN ST.

JAMES LUMBERS

Reserved Especially for YOU!

"CAT NAPPING"



CAT NAPPING IMAGE SIZE 18" x 24" EDITION 1500 S/N ISSUE PRICE \$280

James Lumbers' famous old fisherman and his companions return in a unique, new work. This time Lumbers shows our friends at the end of the day, as the old character naps by the fireside — and that rascal cat shows he too has some of the fisherman's spirit.

AVAILABLE AT:

**Harrop Restaurant
and Gallery**

345 Steeles Avenue 878-8161

OPEN HOUSE LISTINGS

SATURDAY, SEPT 8

SUN. SEPTEMBER 8, 2-4 P.M.
7875 Anderson Ave., Milton
Doris Cross in attendance
Royal LePage Real Estate Services 878-8101

SAT. SEPTEMBER 8, 1-4 P.M.
786 Willow Ave. \$218,900
Bill Currie in attendance
Royal City Realty 878-1188

SUNDAY, SEPTEMBER 9

SUN. SEPTEMBER 9, 1:30-4 P.M.
RR #2, Acton Hwy 25 North to Hwy #7, turn west to 4th Line, North on 4th Line to sign
Helen Hardy in attendance
Royal LePage Real Estate Services 878-8101

SUN. SEPTEMBER 9, 2-4 P.M.
808 Foster Court, Milton \$188,900
Dorcas Byrne in attendance
Royal LePage Real Estate Services 878-8101

SUN. SEPTEMBER 9, 2-4 P.M.
278 Deer Blvd.
Joyce Hagan in attendance
Royal LePage Real Estate Services 878-8101

SUN. SEPTEMBER 9, 1:30-4 P.M.
250 Oriole St., Rockwood
Kevin Hara in attendance
Royal LePage Real Estate Services 878-8101

SUN. SEPTEMBER 9, 1-4 P.M.
889 Wilce Ave. \$194,900
Bill Currie in attendance
Royal City Realty Ltd. 878-1188

SUN. SEPTEMBER 9, 1-4 P.M.
602 Laurier Ave. \$174,900
Claudia Crawford in attendance
Royal City Realty Ltd. 878-1188

SUN. SEPTEMBER 9, 1-4 P.M.
804 Laurier \$194,900
Carole D. Budworth in attendance
Royal City Realty Ltd. 878-1188

SUN. SEPTEMBER 9, 1-4 P.M.
605 Sunnyvale Ct.
Heather Arbib in attendance
Countrywide Realty Ltd. 854-2294

SUN. SEPTEMBER 9, 2-4 P.M.
7575 Midhurst Line \$424,900
Diane Robinson in attendance
Century 21 Golden Real Estate 878-8488

SUN. SEPTEMBER 9, 1-4 P.M.
618 Elliott Crescent \$194,900
Presented by Lita & Wayne Warner
Re-Max Millmore Realty Corp. 878-2388

SUN. SEPTEMBER 9, 1-4 P.M.
802 Laurier Ave.
Gary Love in attendance
Royal City Realty Ltd. 878-1188

SUN. SEPTEMBER 9, 1-4 P.M.
864 Cedarbrae Drive \$204,900
Mural Tucker in attendance
Realty World McCrudden R. E. Inc. 878-1123

SUN. SEPTEMBER 9, 1-4 P.M.
208 Havelock Drive \$194,900
Wendy Costello in attendance
Realty World McCrudden R. E. Inc. 878-1123

SUN. SEPTEMBER 9, 1-4 P.M.
807 Hayward Cres. \$188,900
Jo Anne Yi in attendance
Realty World McCrudden R. E. Inc. 878-1123

SUN. SEPTEMBER 9, 1-4 P.M.
880 Harlock Drive \$229,900
Jack McCrudden in attendance
Realty World McCrudden R. E. Inc. 878-1123

SUN. SEPTEMBER 9, 1-4 P.M.
726 Spar Drive \$184,900
Kay Wynne in attendance
Realty World McCrudden R. E. Inc. 878-1123

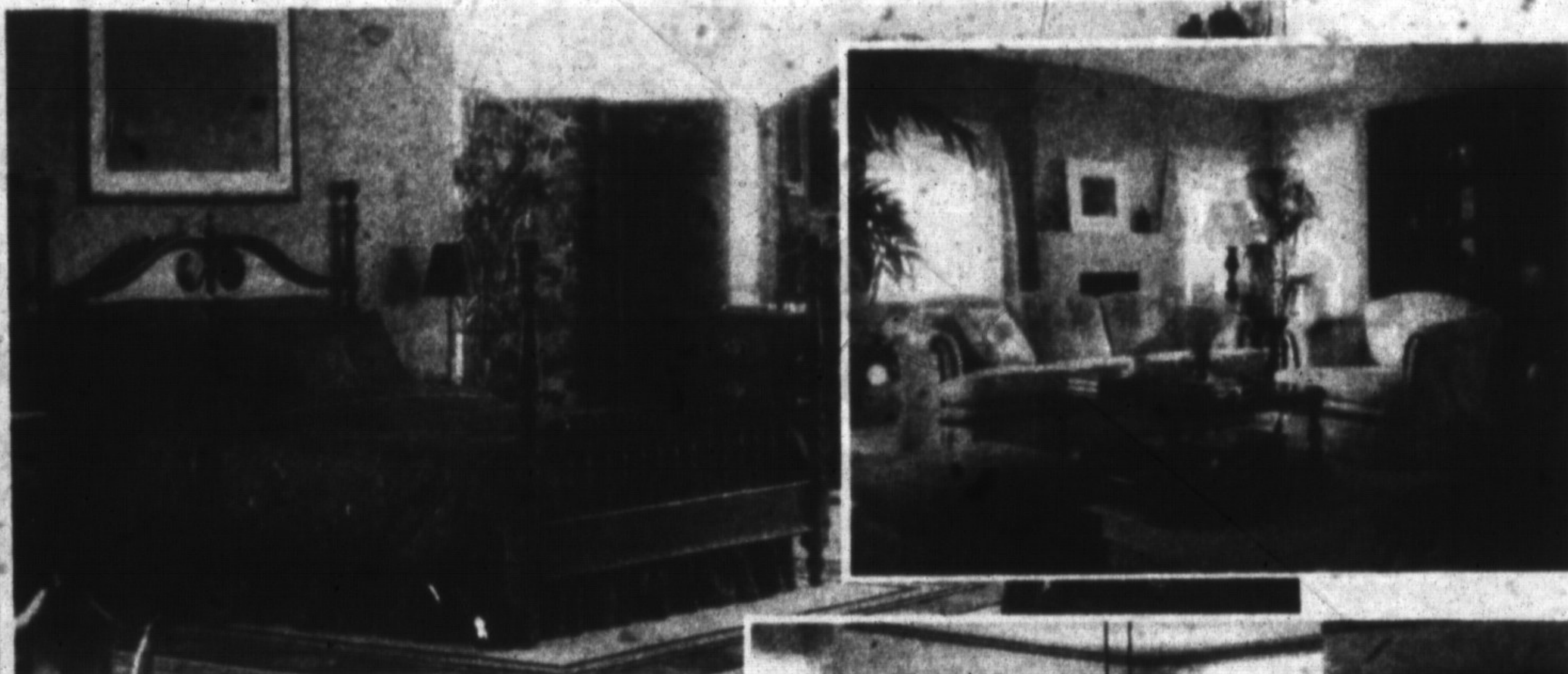
SUN. SEPTEMBER 9, 1-4 P.M.
341 Wilson, Unit 13 \$154,900
Terry Fulton in attendance
Realty World McCrudden R. E. Inc. 878-1123

SUN. SEPTEMBER 9, 1-4 P.M.
867 Woodward Ave. \$188,900
Barbara Mallick in attendance
Realty World McCrudden R. E. Inc. 878-1123

SUN. SEPTEMBER 9, 1-4 P.M.
RR #2, Appleby Line, Campbellville (Steeles Ave. W. to Appleby Line, North to sign) \$184,900
Janine Fretz in attendance
Realty World McCrudden R. E. Inc. 878-1123

SUN. SEPTEMBER 9, 1-4 P.M.
141 Crawford Cres., Campbellville \$488,900
Jacqueline Bodson in attendance
Realty World McCrudden R. E. Inc. 878-1123

A Classical Collection...



for our first Anniversary Sale!!

Roxton

CADWALLADER
ELITE FURNITURE
42 BRONTE STREET, 875-2797

**J. C. Snyder
Sanderson Fabrics
Strathroy**