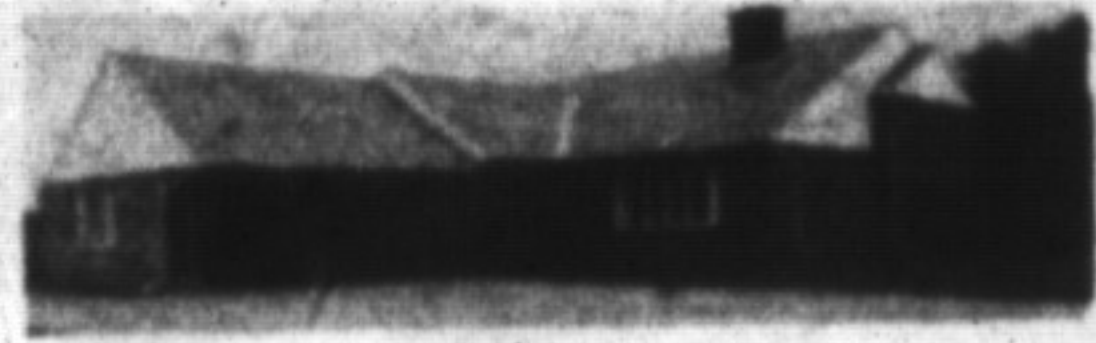


# Can't you picture yourself living here?



### TIRED OF JUST LOOKING

Come make an offer on a Tri-level country home, stone exterior, stone fireplace in sunken living room with vaulted ceilings, custom built kitchen, four bedrooms, air conditioning and more, minutes from the 401 off the Guelph Line in Moffat. For your personal viewing, please call CHARLES G. KERR or SCOTT B. PRIOR at 878-8495.

### FOR SALE-Business only CAMPBELLVILLE AREA Hearth House

Unique Business Opportunity. Well established (8 yr old) one of a kind retail store featuring Ontario's finest selection of top of the line fireplaces, inserts, stoves, pipe/flex & accessories. \$209,900 incl. Business & fixtures - Inv @ cost. Call DON S. PELZ for details 878-1029.

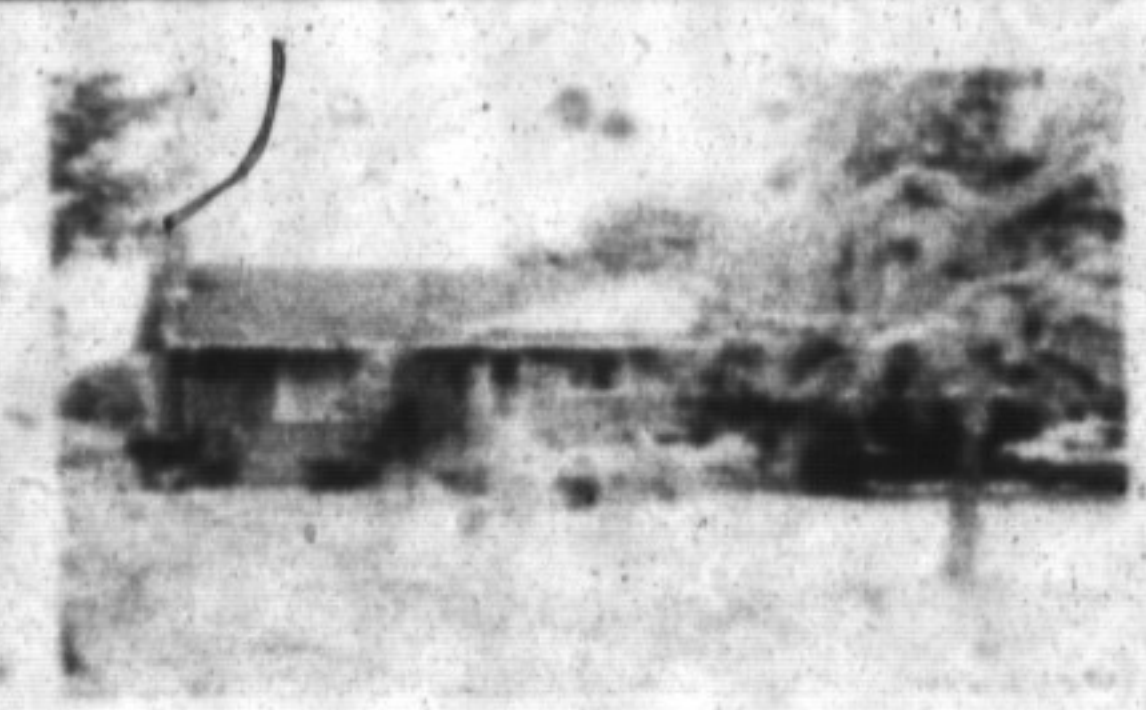
### MOUNTAIN VIEW LOT

On five sided road, minutes from the 401 on paved road in the Hills. Only \$139,900, and can be more than \$150,000 for. I can help assist with cost of building. Call AL VOLPE for more details at 878-8495.



### SEEING IS BELIEVING

is feeling the charm of the country gardens surrounding this home, within steps of Milton's Mill Pond. Excellent location: school, shopping, & transit. \$220,000. compare prices then call me. NOVA SPARKS-AUSTIN at 878-8495 or 821-4932.



### COUNTRY LIVING FOR UNDER \$200,000.

This bungalow is situated on a beautiful 1/2 acre lot, near the 401 and offers a golf course nearby. You will love the location. Please call JAMES D. SNOW for all the details at 878-8495.



### PRICE SAYS IT ALL

For only \$219,000, you can own this 4 bedroom home, has huge family room with a fireplace and walk-out to fully fenced back yard, eat in kitchen with walk out to deck. Immediate possession and worth looking at. Call JOAN E. TATTRE at 878-8495 or 878-1575 (res).



### PICTURE YOURSELF

in front of a glowing fireplace in the living room during the winter months, or entertaining in your separate dining room, or just relaxing in your finished rec room with the air conditioning running on those hot summer nights, if you imagine this then this is the place for you. This semi has been tastefully decorated throughout and pride of ownership shows here. Seeing is Believing, give JOAN E. TATTRE a call for your inspection at 878-8495 or res. 878-1575.



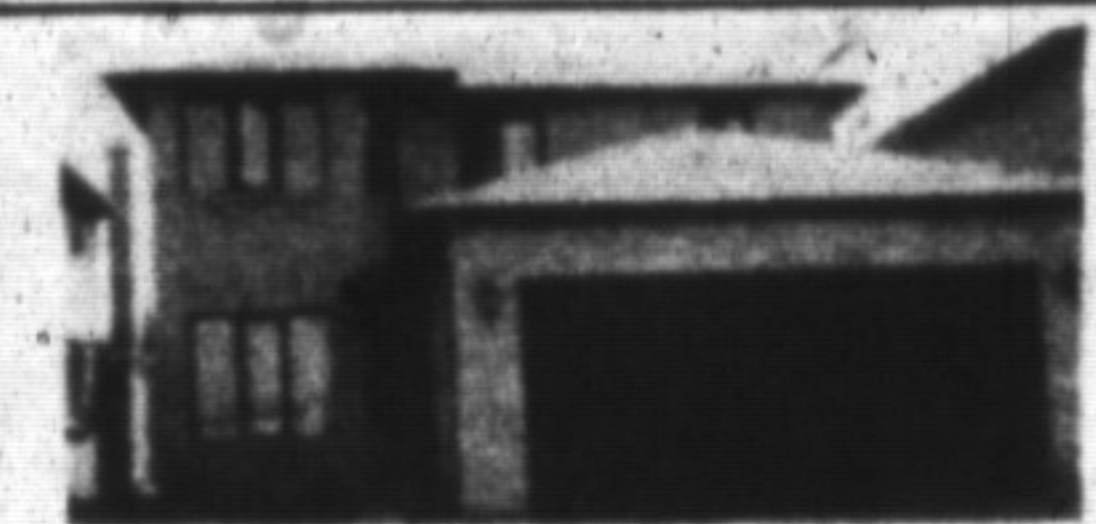
### AFFORDABLE COUNTRY LIVING

\$219,900. will put you in the wooded area Country home. 2 bedrooms, pool, fireplace, neat and clean. Call DON PELZ at 878-8495.



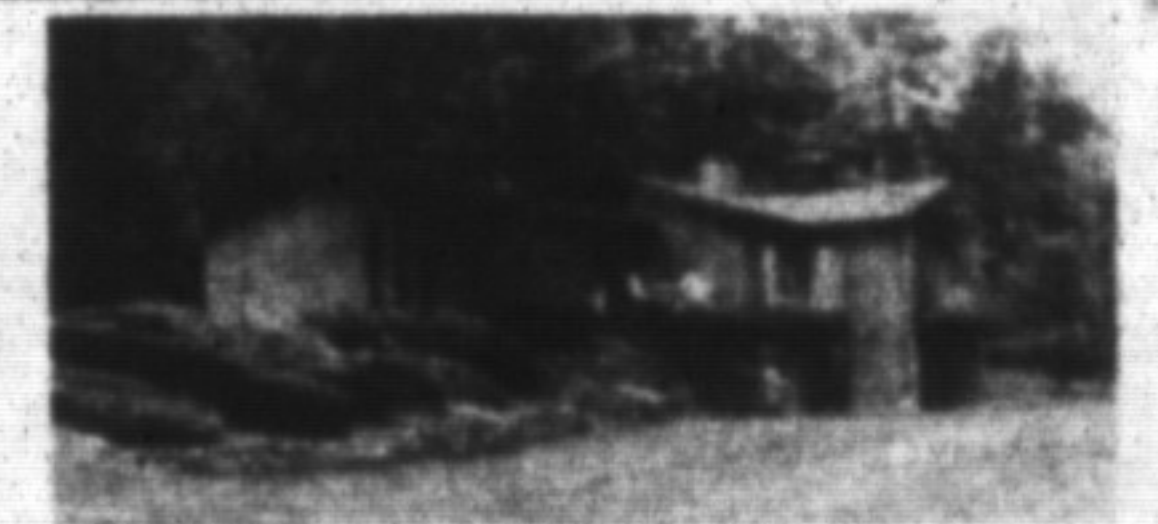
### FABULOUS FINANCING

goes with this 4 bedroom home with huge greenhouse kitchen, main floor family room with fireplace and walk-out to 16x32 inground pool. Large formal living room and dining room plus main floor laundry and bath. 11.75% mortgage until Sept. 1993 plus Vendor will take back 2nd mortgage at below current rates. Call DIANE ROBINSON for further details at 878-8495 or 878-4393. Listed at \$334,900.



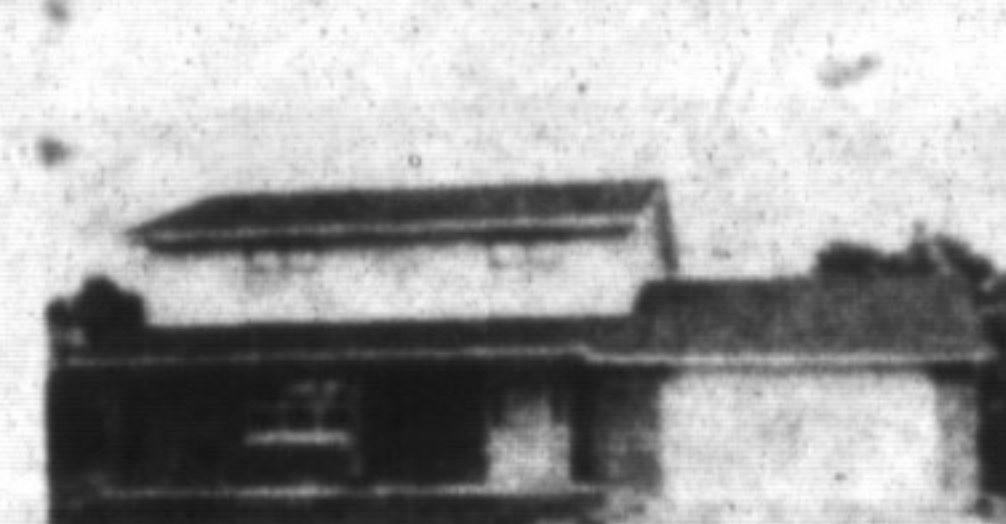
### EAST BURLINGTON NOTHING COMES CLOSE TO IT

When you compare this lovely 3 bedroom home with others you've seen, yet it is close to everything, schools, churches, OEW, and GO Station. Bright eat-in kitchen with W/O to deck. Formal LR & DR. Main floor FR with FP and main floor laundry area. Master has full 4 pc. ensuite. Asking \$269,900.00. Call Diane Robinson to view 878-8495 or 878-4393



### PRIVACY PLUS

Hot off the press, beautiful locations surround this bi-level bungalow, located on 2.86 acres, has four bedrooms, two fireplaces, air conditioning, family room, three baths, whirlpool, central vac and attachments, heat pump and much more. Want to spoil yourself, try this home on for size, you'll see it fits. For more information, call JOSEPH MANCHISI at 878-8495.



### COME TO THE COUNTRY

Efficient modern family home on 2.91 acres, ready to meet your needs, ideal hobby farm location, space for equipment. Well set back from Guelph Line, good 401 access - a short commute to Toronto or Guelph. \$349,000. For details call NOVA SPARKS-AUSTIN sales Rep at 878-8495 or 821-4932.



### TODAY'S BARGAIN IS TOMORROW'S GAIN

Listed at only \$279,900, this attractive two storey brick home has all the conveniences of today's living, many upgrades and the lot has been professionally landscaped. Four bedrooms, main floor family room, and much more, call AL VOLPE for complete details at 878-8495.



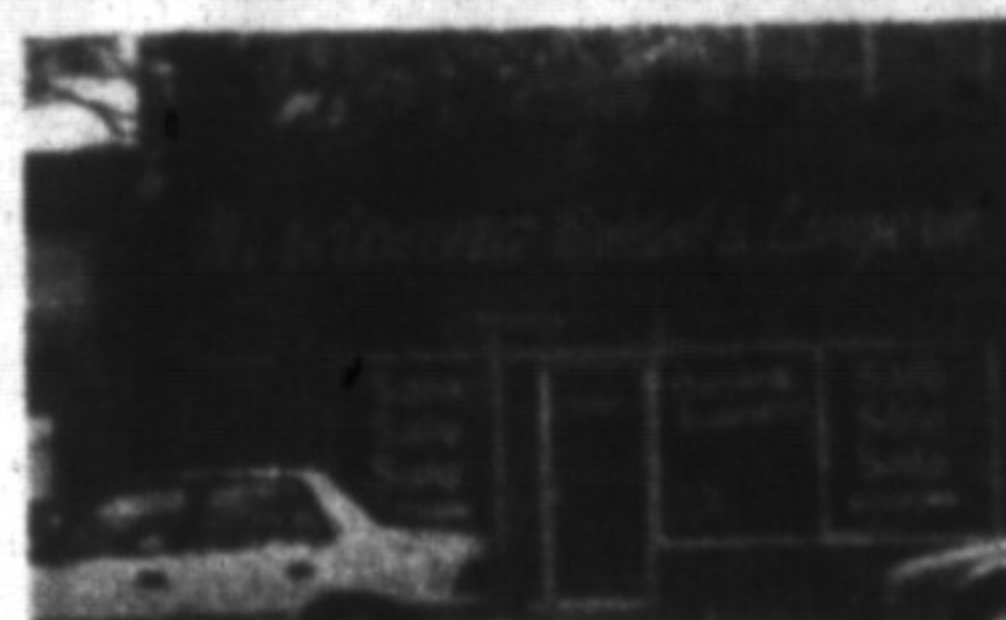
### COST OF BUILDING, COST OF LAND

For only \$279,900, list price gives you more for today's expenses. For replacement do you know what it cost. Satisfy yourself, call AL VOLPE for assistance at 878-8495.



### COUNTRY QUIET - CITY CLOSE

Only 15 minutes from Milton, Burlington and Guelph is this spacious 4 bedroom home with a lg. country kitchen, main floor family room with FP and W/O to deck. Formal LR and DR. Loft area has bedroom, library and 2 pc. bath. Finished barn, with game room complete with billiard table. Central air and vac. Call Diane Robinson for viewing 878-8495 or 878-4393. Asking \$424,900.



### PROVEN DOWNTOWN LOCATION

Here's 1300 Sq. Ft. in an ideal location, available immediately, and offering flexibility on leasehold improvements. Please call 878-8495 and ask for JAMES D. SNOW.



### COUNTRY STARTER HOME

Semi-detached 3+ bedroom home on .55 acres. Property has grape vines and fruit trees, all close to Keesee Conservation Area. Includes fridge, stove, freezer. For more details please call RON TWISS at 878-8495 or res. 878-4056.



### IMMEDIATE POSSESSION

Four bedroom multi-level back split, extra clean, tastefully decorated, family room with fireplace, central vac, central air, and much, much more. To view please call RON TWISS at 878-8495 or 878-4056, available immediately, asking price \$229,900.



### INDUSTRIAL, COMMERCIAL & INVESTMENT

2.9 acre Industrial Land - offers "M2" zoning, full services, 60% lot coverage, \$350,000. per acre.

OVER 23,000 sq. ft. Hwy. Commercial - 100% leased, A/C, asking \$2,750,000.

10 ACRES - next to "M2-A" lands, some income now, ind. potential for specific use. Asking \$1,300,000.

Commercial Space for Lease - prime & proven locations in downtown Milton. Please call for more information. Call James D. Snow, 878-8495.



### BEATS CITY LIVING

But close to major highways for the commuter who would like to live in the country, has three bedrooms, two baths, 100'x200' lot size, living room with fireplace, main floor den, newly renovated kitchen and much more. Vendor is willing to assist with financing. Call SONJA WILLIAMSON for complete details at 878-8495 or 875-1924 res.



### GET CREATIVE

This unique stone house could open your imagination to great ideas. Located minutes to Milton and all other amenities. Asking \$285,000. Contact JOSEPH MANCHISI for more information at 878-8495.

Bill Gear 335-9689  
Carlo Giangrande 876-1031  
Diane Gibbons 335-5489  
Paddy Gill 878-0085  
Douglas Jones 878-4957

Charles Kerr 338-7248  
Jim Kerr 878-8495  
Lorraine Kerr 878-8495  
William Lenizky 853-3797  
Joe Manchisi 335-5489

Don Pelz 878-1029  
Scott B. Prior 876-1251  
Diane Robinson 878-4393  
Paula Rasumssen 854-0176  
James D. Snow 878-2172

Nova Sparks-Austin 878-6728  
Joan Tattre 876-1575  
Ron Twiss 878-4056  
Al Volpe 827-9025  
Sonja Williamson 875-1924

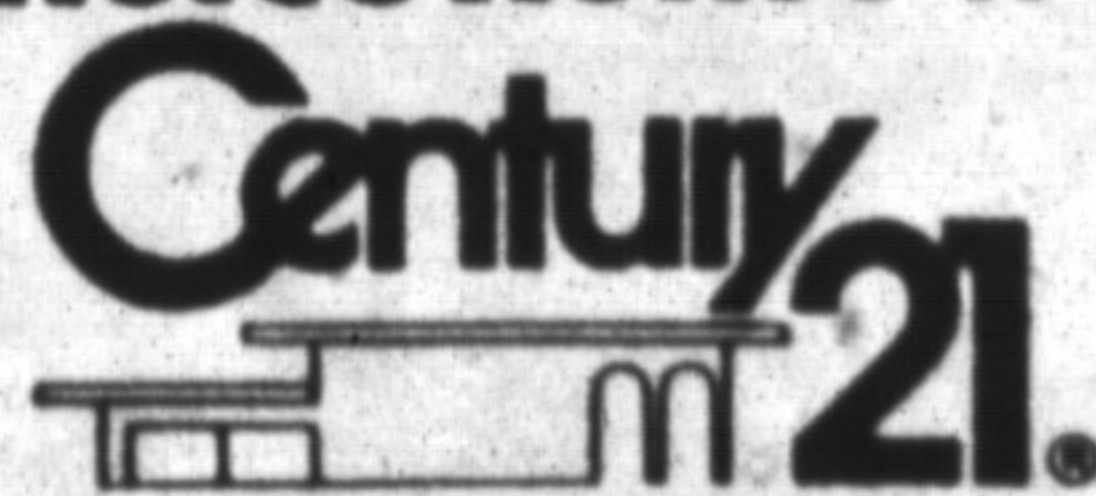
Office Staff: Marie Austen, Tracy Young, Elaine Stover

If you're looking for a choice home we offer a wide selection.

420 MAIN ST., MILTON

878-8495

Toronto Line 821-4764



We'll give our word to you.™

CENTURY 21®  
GOLDEN REAL  
ESTATE LIMITED