

RE/MAX

Miltowne Realty Corp.

"Locally owned and operated"

22 Ontario St. South 878-2365

RE/MAX - The Canadian Champion, Wednesday, August 8, 1990



SANDRA A. BAILEY

Sales Representative

Bus. 878-2365

24 hr. Pager 878-2020

Tor. Line 826-1030

RE/MAX Miltowne Realty Corp.
22 Ontario St. S., Milton



11-3/4% JANUARY 1994 MORTGAGE

Come see for yourself.
Has central air/central vac.
Includes washer & dryer.
Lovely cared for!
Double drive and garage.
Still more extras.

Price \$229,800

Please call Sandra A. Bailey
for personal viewing 878-2365



WHY GO WEST?

This 1,375 sq. ft. link home is the answer.
3 bedroom, all brick, nice size lot, close
to 401. For more info. about this home,
please call Sandra A. Bailey. \$169,800.

HAVE YOU HEARD?

This 2,200 sq. ft., 4 bdrm. home has it all, ceramic/upgraded broadloom,
2 fireplaces, 4 bathrooms, 4 bedrooms, basement completely finished.
Make an offer. \$239,800. Please call Sandra A. Bailey for further details.

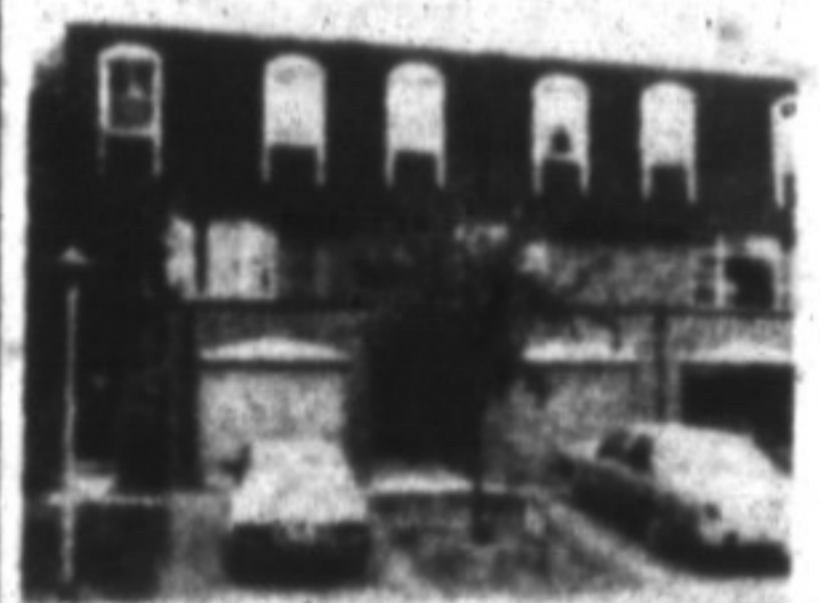


12.25% FEBRUARY 1994 MORTGAGE

Let you will like this one
Redecorated & freshly painted.
Includes new fridge and stove
Affordable, I'll say.

Reach for this great mortgage.
Price \$189,800

For a personal viewing
please call Sandra A. Bailey



"I DARE YOU"

To view this lovely 3 bedroom
townhouse. It has been decorated from
top to bottom/new vinyl flooring/
upgraded broadloom, paint & wallpaper.
This is truly a steal. Priced at \$146,800.
For a personal viewing please call Sandra
A. Bailey.

MISSISSAUGA HERE I COME

That is what you will say after viewing this 4 bedroom townhouse, grey
broadloom throughout, freshly painted, lovingly landscaped/fenced yard.
Price is right \$167,800. Please call Sandra A. Bailey for personal viewing.



MIKE MORGAN

Associate Broker

878-2365

826-1030

(Tor. Line)

878-8093

(Res.)



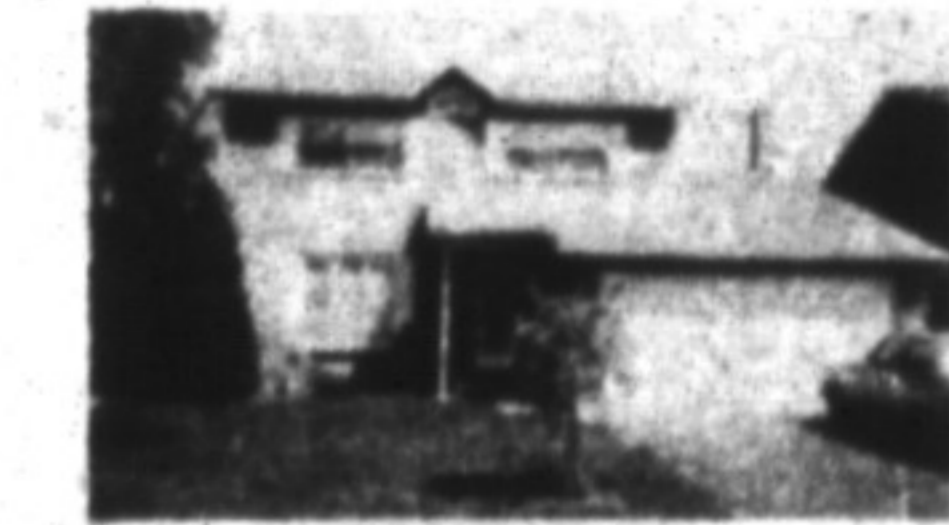
OFF THE BEATEN TRACK

This quiet village located between Acton
and Rockwood is the perfect location for
the immaculate bungalow. A brick fireplace
in the living room, woodstove in the rec.
room and a 16' x 32' pool will invite you to
call Mike. \$234,900.



EXCELLENT VALUE

Beautiful, bright, upgraded raised
bungalow with numerous extras. Oval
inground pool, central air, 60 x 100
landscaped lot - plus a finished lower level
that can be a complete in-law suite. To
hear all about it call: Mike Morgan. \$184,900.



PERFECTION

If your wishes include an all brick, 2-storey,
four bedroom home with main floor family
room, plush 62 oz. broadloom and two
walkouts to a large private back yard. Your
wish fulfillment number is 878-2365. Call
Mike. NOW \$249,900.



YOUR CHANCE TO SPREAD OUT

In this spacious 4 bedroom brick backdrop
in desirable Timberlea. A family room with
fireplace and walkout, to full bathrooms
and hardwood floors make this a perfect
family home. Call Mike. \$259,900.



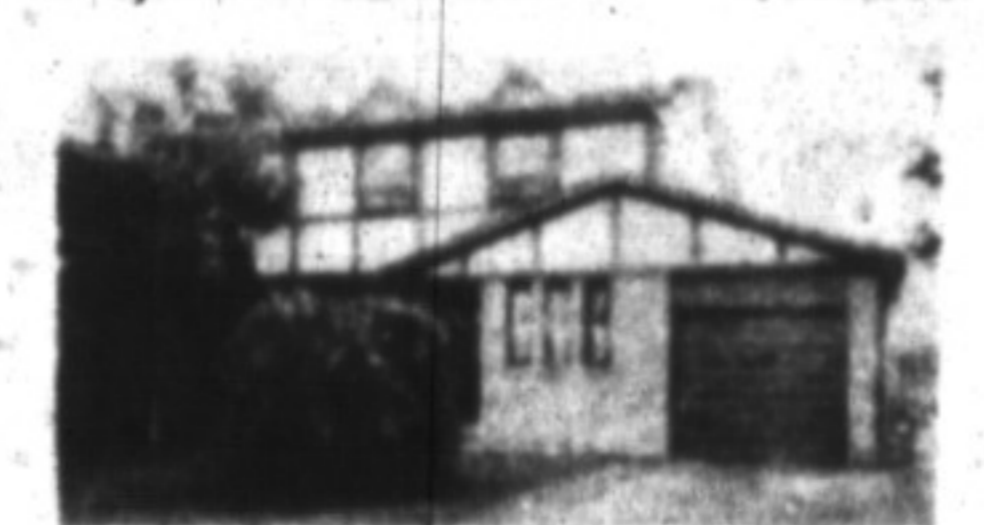
CHARM AND CHARACTER

This is your opportunity to get a lovely home
on a 62' x 262' in town lot with a complete
in-law apartment on the upper floor.
Charming bright living room and beautiful oak
kitchen makes this unique home the perfect
answer to your particular needs. Call Mike
Morgan. \$219,900.



6-3/4% FOR 2 YEARS

Fantastic home with outstanding financing
available to you. Make the move to 1387
sq. ft. of upgrades plus a huge finished
basement with wet bar. Don't miss the 2
fireplaces, French doors and a backyard
with pool and western exposure overlooking
a treed area. Call me. \$189,500.



YOUR FUTURE IS HERE

There's plenty of room for your growing
family in this 4 bedroom, 3 washroom
home with a beautiful bright family room
with fireplace across the rear of the house.
Backing onto open space this home also
features two other fireplaces and gleaming
hardwood floors. Call Mike. \$219,900.



QUIET COURT LOCATION

Upgrades are a bonus when you're
located on a safe, quiet court with easy
access to the park and schools. Central
air, fireplace, upgraded broadloom, large
kitchen and rec. room. Call Mike. \$169,900.

RON FURIK

Sales Representative

Office: 878-2365



Res: 878-3337
Tor. Line 826-1030



SOLD

BUYING FIRM

This may be the house for you. At \$224,900,
this 4 bedroom, 2 bathroom home is nestled
on a lovely treed bordered "Extra Large" yard.
Features fireplace in living room + spacious
eat-in kitchen.



FORGET RENTING

When you take possession of this 3 bed-
room - 2 bathroom townhome with central
air. Upgraded carpeting, eat-in kitchen, din-
ing/living room combination with a walkout
to patio. Asking \$152,000.



COUNTRY LIVING

1.3 acres of sloping land with loads of
potential. 3 bedroom "Early Cedar" bungal-
ow features large living room with fireplace,
spacious kitchen, open cathedral concept.
Listed at \$250,000.

YOUR TOWN & COUNTRY TEAM



LINA WARNER
Sales Rep

878-2365
Bus.

878-1084
Home

826-1030
Tor. Line



WAYNE WARNER
Assoc. Broker



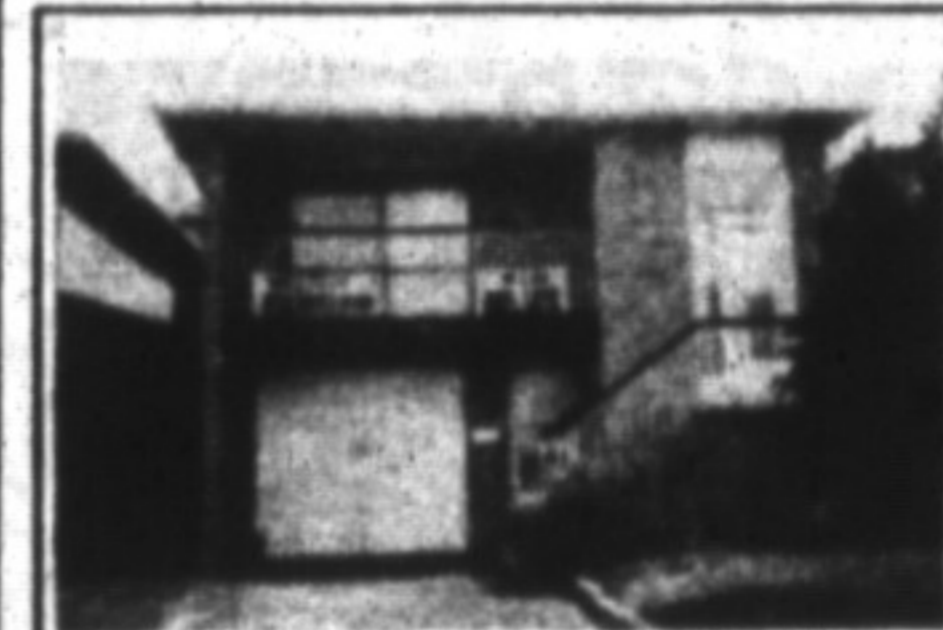
KILBRIDE COUNTRY

Unique contemporary cedar home on
25.3 acres in Muskoka-like setting.
\$529,900.



PRIVACY PLUS

Absolutely immaculate 4 bedroom, 2
storey townhouse in Timberlea. Use of
pool, tennis & rec. centre. \$149,900.



NANNY OR INLAWS!

The home will accommodate all! Two
front entrances, huge family room, 4
bedrooms, 2 full baths. \$219,900.



ABSOLUTELY SUPERB!

Large immaculate backdrop, 4 bed-
rooms, huge private yard with heated
inground pool. \$289,900.



BURLINGTON COUNTRY

Bi-level brick bungalow on 1.6 wooded
acres with panoramic view of
Burlington. \$374,500.



SIMPLY PERFECT

Immaculate 2 storey home features
European kitchen, separate dining room,
upgraded broadloom, finished rec. room
with bar and huge yard. Asking \$194,900.



Carole Stonhill
876-4913

Res.

Sales Rep



Stella Hall
878-4339

Res.

Sales Rep

Office
878-2365

"It's time to take a drive"



REDUCED \$249,000.
905 CEDARBRAE



REDUCED \$209,900.
43 LORNE SCOTS DRIVE



REDUCED \$199,900.
597 JOYCE



REDUCED \$369,900.
712 ROBERTSON CRES.



REDUCED \$232,000.
36 LORNE SCOTS DRIVE

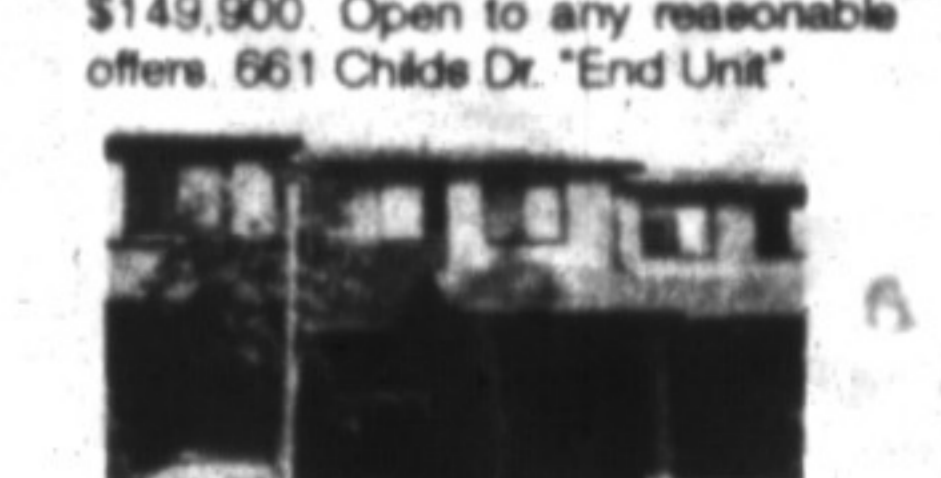


"YOUR CHOICE"

3 lovely townhomes all priced at
\$149,900. Open to any reasonable
offers. 661 Childs Dr. "End Unit"



415 ONTARIO ST
All appliances. Loaded with Upgrades.



481 PITFIELD - 24
4 BEDROOMS