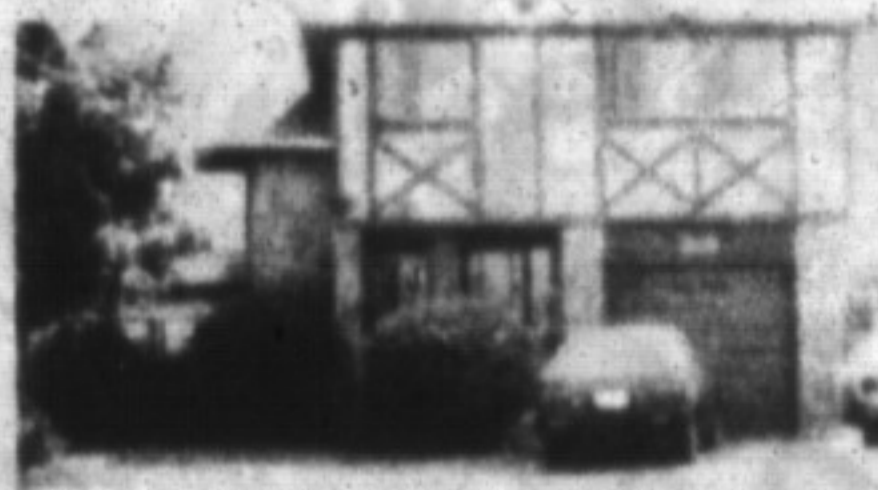


ROYAL LePAGE

A LEADER IN THE INDUSTRY



NESTLED BEAUTIFULLY IN DORSET PARK

Come view this large 4-bedroom, 3-bath home. Offer's main-floor family room with fireplace & walkout to massive backyard. Partly finished rec. room, single garage. \$209,000. Call:

* Joyce Hagevik 878-8101



135 Wilson — \$209,900

4 bdrm./b-split/pool/2 4-pc/inlaw suite



278 Coxe Blvd. — \$285,900

4 bdrm. 2 storey/cent. air/cent. vac./2,300 sq. ft. beauty

For details, call:

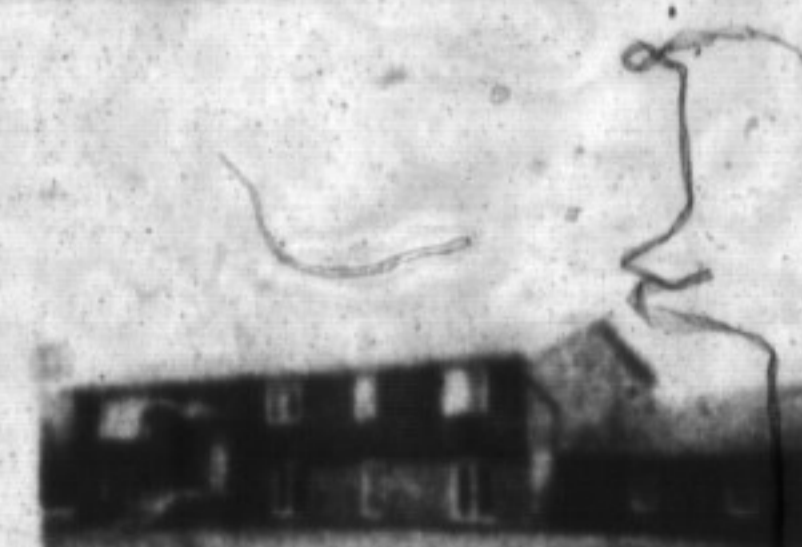
* Joyce Hagevik 878-8101



CURB APPEAL — \$459,000

Spacious and appealing home in the country set on approx. one acre. Main-floor family room with vaulted ceilings adjoins large kitchen with loads of cherrywood cupboards. Master ensuite has jacuzzi and built-in cupboards.

* D. Kerslake or * D. Lawrence 878-8101



COUNTRY LIVING 11 ACRES — \$679,000

A chance of a lifetime! Exec. horse/hobby farm. Spectacular escarpment view! 10-stall barn. Home has 4 large bedrooms, nanny suite, fireplaces & much more. For info, call

* Virginia Brazeau 878-8101



SPACE, GRACE, AN UNCOMMON PLACE

4,500+ sq. ft., 6-bedroom, 2-storey home and indoor pool addition built in highest quality materials throughout. 3.25 acres with great access to 401, sun room, tack room, rec. room, study. Don't delay on this one — \$699,000.

* Marg Swain 826-9218



SUPER SEMI — GREAT LOCATION

This home is a pleasure to view. Beautiful upgraded kitchen with bay window, separate dining room, fireplace in living room, finished rec. room, central air, walking distance to schools, parks, etc. — \$177,900.

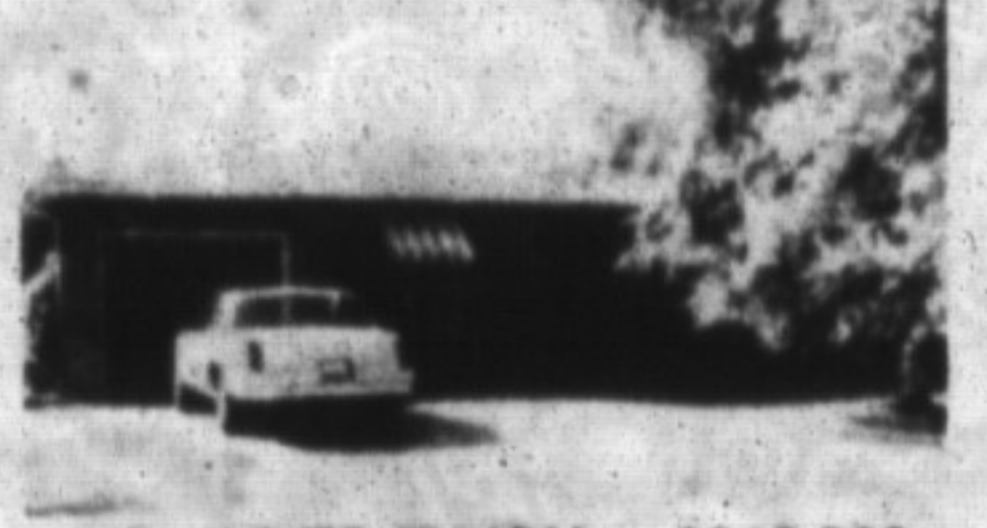
* Marg Swain 878-8101



BRICK BUNGALOW

Three spacious bedrooms up and one down, a full bath on both levels, large kitchen and finished rec. room with fireplace and fruit trees in the backyard make this home a must to see — \$226,000. To inspect, please call:

* Donna Syms 878-8101



YOURS TO ENJOY — \$219,900

In summer, enjoy your central air or sit in your spacious Florida room and be cooled by summer's breezes. In winter, snuggle by the massive brick fireplace and warm your toes. Home well maintained inside and out. Call:

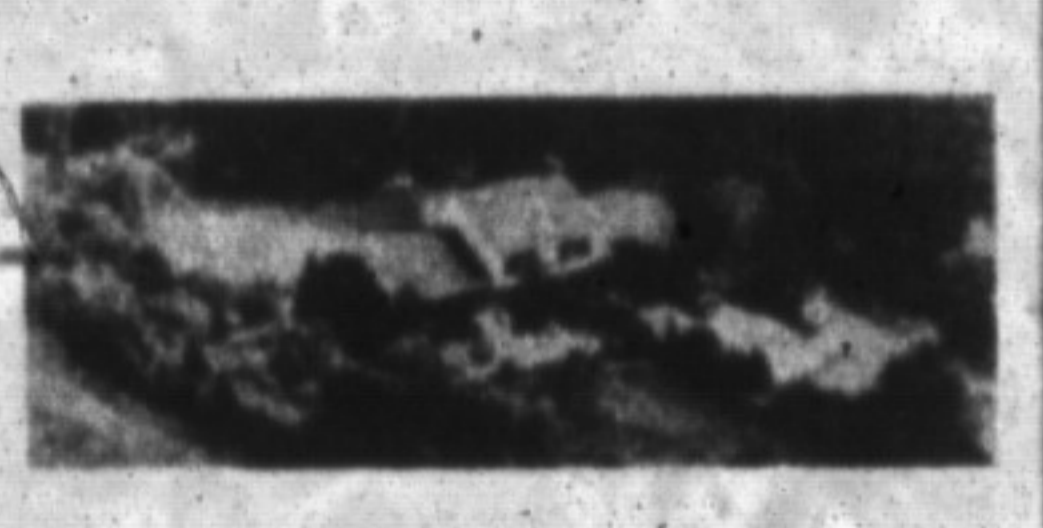
* Sandy Del Papa 878-8101



TRULY DELIGHTFUL — \$186,900

Charming brick bungalow (recently remodelled with many upgrades) located on a quiet crescent. Kitchen redone in oak with trac lighting. Furnace and most windows replaced. Maintenance free exterior, cent. air, cent. vac. and more!

* Sandy Del Papa 878-8101



MEMORIES IN THE MAKING — \$689,000

Fabulous 20.85-acre country property partly surrounded by conservation area. Approx. 15 acres fenced pasture including loafing barn, fenced paddock and some hardwood bush. Great proximity to Kelso.

* D. Kerslake or * D. Lawrence 878-8101



STARTER HOME — \$198,900

Two-bedroom home located in the heart of a quiet, picturesque village. Very pretty treed lot of approx. one acre.

* D. Kerslake or * D. Lawrence 878-8101



LOOK OUT TO A PRETTY VIEW

Well-maintained bungalow with ground-level walkout from rec. room. One-bedroom self-contained apartment plus beautifully landscaped 2.5-acre lot. Sunken living room with fireplace — \$434,900.

* D. Kerslake or * D. Lawrence 878-8101



MAJESTIC STONE ESTATE

Nestled among nature trees on scenic 2-acre lot backing onto magnificent natural woodlands, this 4,300 sq. ft. 2-storey offers the ultimate in today's living. Nearing completion, purchaser to have choice of fixtures, colours, etc.

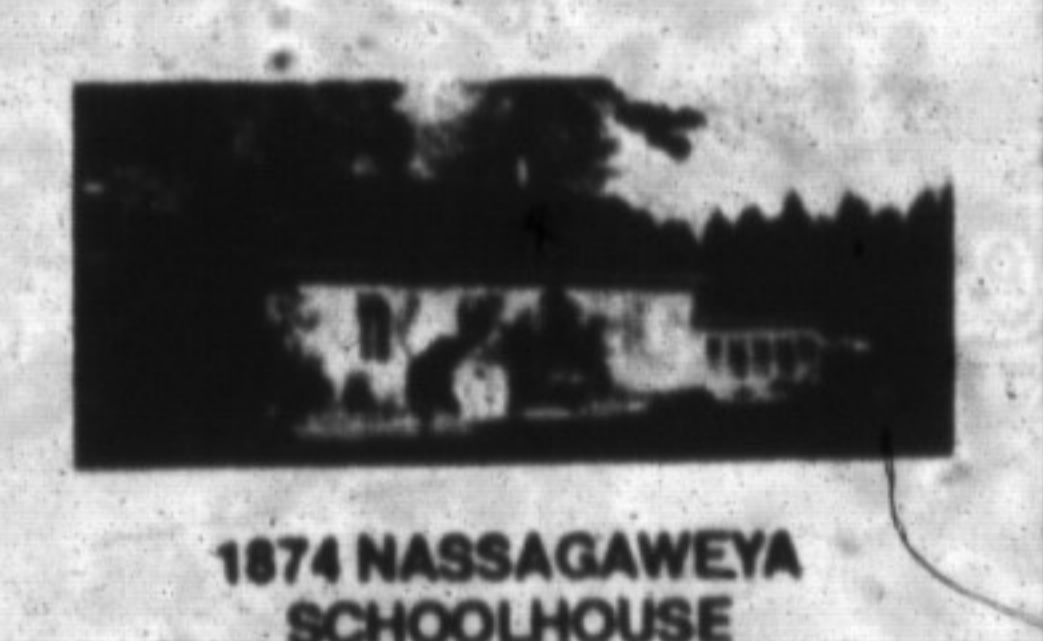
* Inge Winther 878-8101



PRESTIGIOUS SOUTHWOLD ESTATE \$899,000

Gracious manor house set on a 2+ acre wooded estate lot on a secluded close with stream and featuring over 5,000 sq. ft. with 5 fireplaces, 5 bedrooms, 5 baths, large formal rooms throughout. One of the few.

* Inge Winther 878-8101



1874 NASSAGAWEYA SCHOOLHOUSE

Built in stone and carefully restored from a one-room schoolhouse to 9 rooms, 3,200 sq. ft. of enjoyable living with the original bell atop and a new 3-car coach house. Sits on a very private and secluded acre, a rare gem.

* Inge Winther 878-8101



IT DOESN'T GET ANY BETTER!

Then this 2-storey all-brick executive beauty in Timberlea. Features include large lot, 2-storey foyer, large kitchen with oak cupboards, main-floor family room and laundry, cent. air & vac., custom draperies and more.

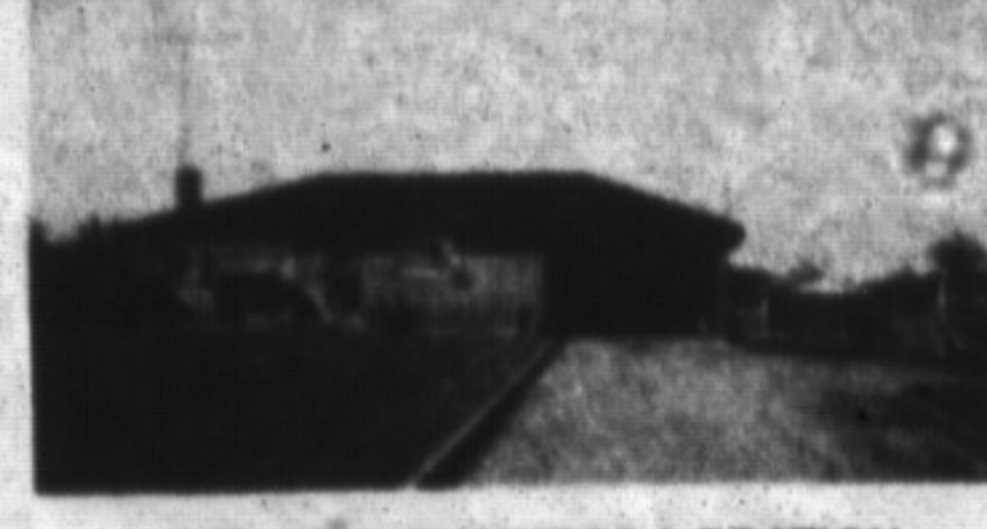
* Karen Irvine 878-8101



NO, I'M NOT KIDDING !!!

You can own this 1-1/2 year-new home on a large lot (66' x 132') featuring double garage, pine Barzotti kitchen, beautifully appointed bath with skylight, family room with fireplace, all for \$189,900. Don't delay.

* Karen Irvine 878-8101



YOUR NEW BUSINESS LOCATION ...

On Highway 25 just a mile north of Highway 401. More than 1/2 acre beautifully landscaped and a very attractive brick bungalow included. Zoned C4 Commercial. Phone me for all details.

* Rudy Arbelter 878-8101



STOP PAYING RENT!

Check out this 3-bedroom townhouse. Large front yard, private barbecue area off kitchen, separate garage, 2 bathrooms, finished rec. room, cent. air. Offered at \$149,900. To view call:

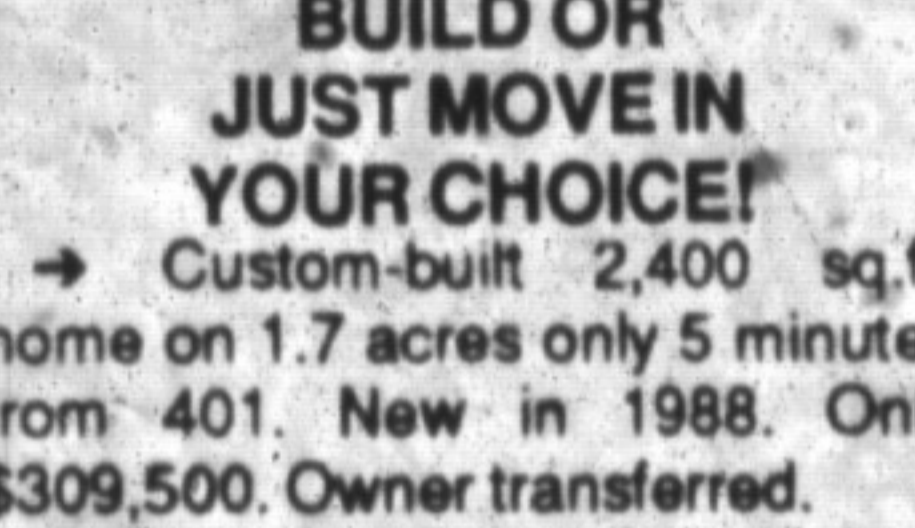
* Ed or * Norma Proveau 878-8101



PRIVACY, POOL & LOCATION — \$299,000

Four-bedroom, all-brick executive home. Main-floor laundry, and family room with fireplace. Large pie-shaped lot with in-ground pool. Includes cent. air & vac. and 5 appliances. To inspect, call:

* Ed or * Norma Proveau 878-8101

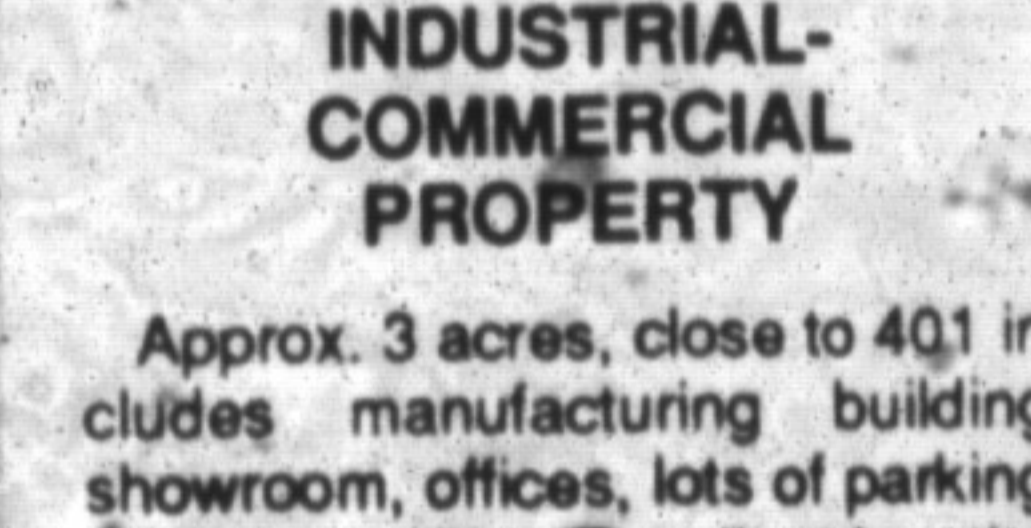


BUILD OR JUST MOVE IN YOUR CHOICE!

→ Custom-built 2,400 sq. ft. home on 1.7 acres only 5 minutes from 401. New in 1988. Only \$309,500. Owner transferred.

→ Secluded 5-acre lot with well and lot levies paid. Ready for your dream home. Only \$229,000.

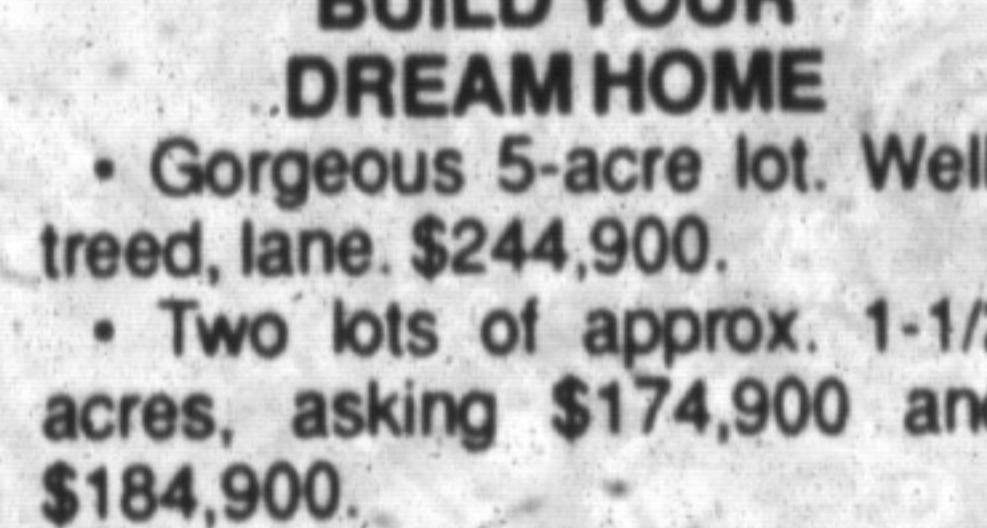
* Ed or * Norma Proveau 878-8101



INDUSTRIAL-COMMERCIAL PROPERTY

Approx. 3 acres, close to 401 includes manufacturing building, showroom, offices, lots of parking, private dwelling. Excellent location for relocating your business. \$865,000. Phone for appointment.

* Helen Hardy 878-8101



BUILD YOUR DREAM HOME

• Gorgeous 5-acre lot. Well-treed, lane. \$244,900.

• Two lots of approx. 1-1/2 acres, asking \$174,900 and \$184,900.

• Commercial lot available of approx. 1-acre lot at \$174,900.

* D. Lawrence or * D. Kerslake 878-8101



READY FOR INSPECTION \$154,900

Three-bedroom townhouse in desirable "Laurier" Complex featuring log-burning fireplace for those cosy evenings. Private backyard is fully fenced. To view, call

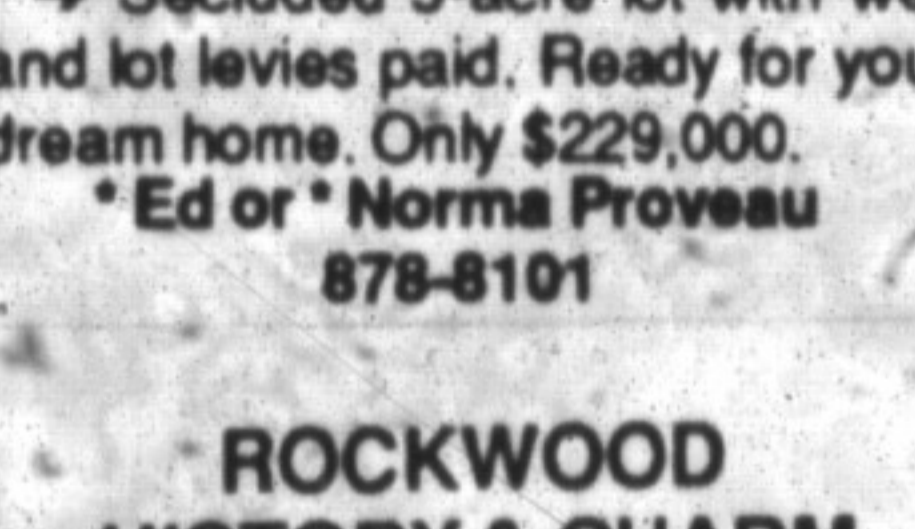
* Sandi Kinsale 878-8101



FOR THE BIRDS ...

and the deer and your family. Lovely 9-room home surrounded by rolling fields and bush on 1/2 acre lot. Only 2 miles from 401. Loaded with features. Owner moving west. Only \$287,000. To view call:

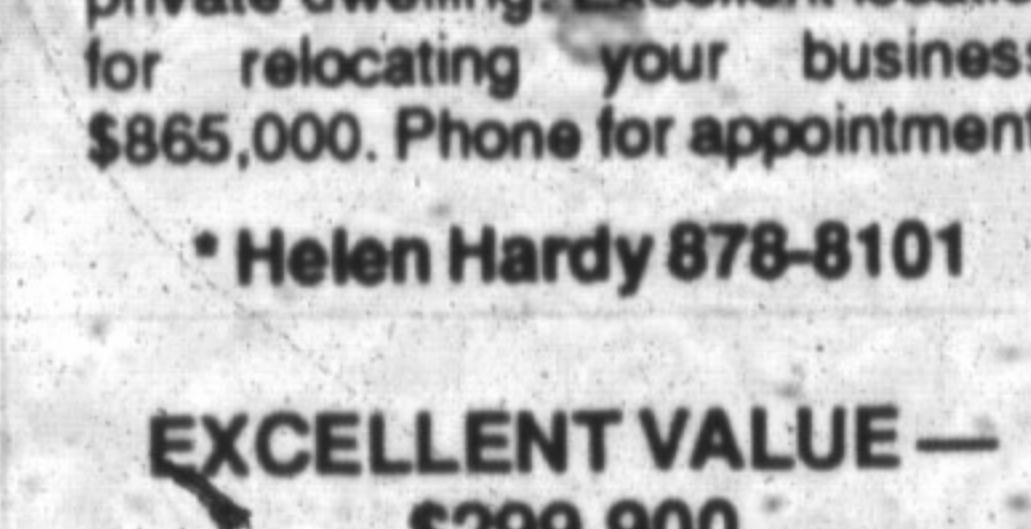
* Ed or * Norma Proveau 878-8101



ROCKWOOD HISTORY & CHARM

Restored century home on lovely mature lot. Large country kitchen. Pine plank floors. Starter home with character. Reduced to \$199,000 for quick sale.

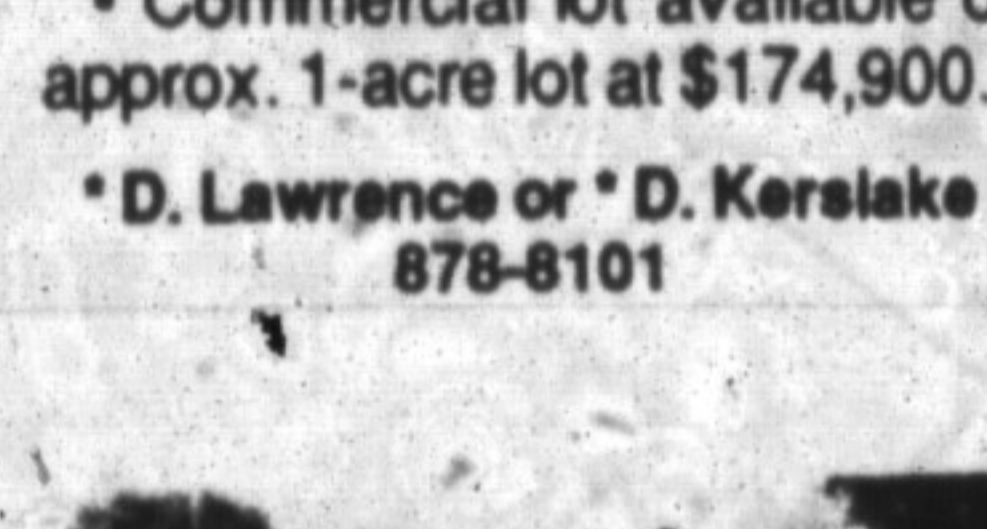
* Ed or * Norma Proveau 878-8101



EXCELLENT VALUE — \$299,900

Prime location, quality-built home on approximately 1 acre. Fireplace, air conditioning, appliances included, 2-car garage. Take advantage of assumable mortgage at 11.75%. Phone for an appointment.

* Helen Hardy 878-8101



KILBRIDE VILLAGE

This spotless home is the ideal opportunity for first-time buyers or retiring couple. Beautiful lot backing onto open space, central air, finished rec. room, pine floor in master bedroom — a must to view, \$182,750.

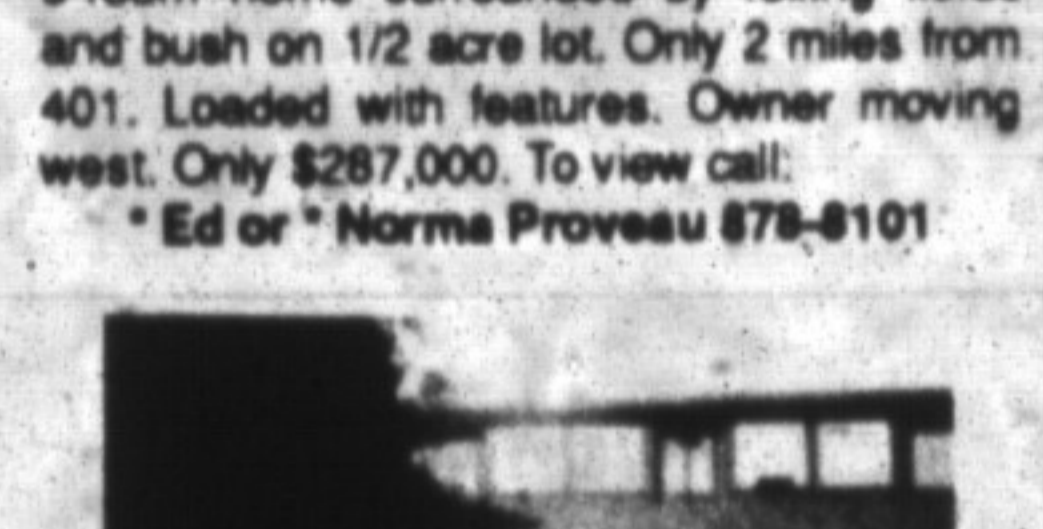
* Marg Swain 878-8101



777 COULSON — \$214,900

The perfect place to raise a family! This three-bedroom, 2-storey includes a finished basement plus a fourth bedroom or office, central air and a kidney-shaped inground pool. What more could you ask for!

* Virginia Brazeau 878-8101



TERRIFIC TOWNHOUSE VALUE

Two units available in this prestigious complex. Two-storey, 3-bedroom, large eat-in kitchens, situated close to schools, parks and all amenities. Priced from \$144,500. Don't delay. Call now for full details.

* Sandra Logie 878-8101

388 MAIN ST. EAST

878-8101

(Tor. Line) 826-9218

Toll-free 1-800-263-4176

ROYAL LEPAGE REAL ESTATE SERVICES LTD., REALTOR



SECRETARIES

Gayle Ford • Ginger Tiede • Wendy Girard
• Shirley Langdeau • Shelly Varley

It's you that counts the most.

LAMONT LEONE — Manager**

Karen Irvine* 876-4154	Rudy Arbelter* 878-3558
Donna Syms* 878-3112	Audrea Lear Costigan* 878-9151
Les Bunker* 519-856-4352	Sandi Kinsale* 878-0392
Denzil Lawrence* 878-1944	Sandy Del Papa* 878-5229
Margaret Swain* 878-7687	Barbara Crowe* 878-7875
Ed Proveau* 876-1707	Sandra Logie* 878-1881
Joyce Hagevik* 876-1084	Jean Thomson* 878-0767
Inge Winther* 853-1990	Barbara Lafleche* 875-3303
Norma Proveau* 876-1707	Helen Hardy* 878-3915
Denise Kerslake* 876-1735	
Doeman Chow* 878-3989	
Virginia Brazeau* 878-1221	

** Broker

* Sales Representative