

RE/MAX

Miltowne Realty Corp.

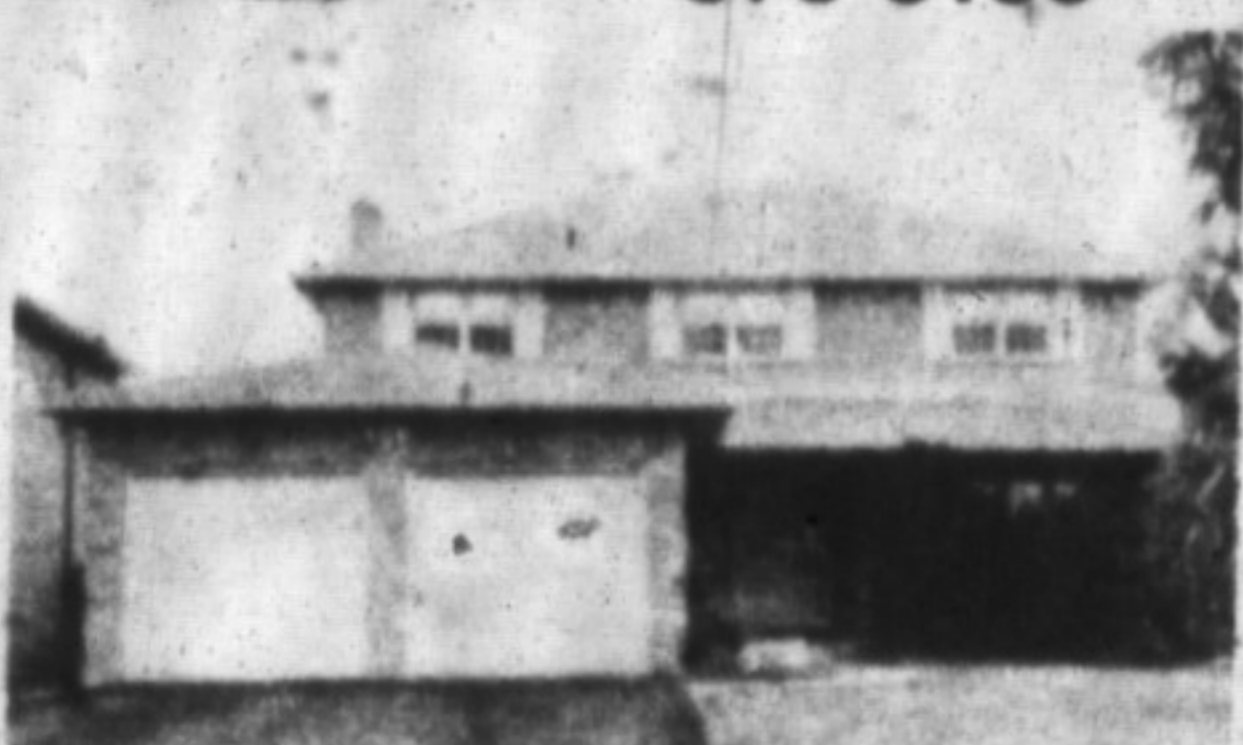
"Locally owned and operated"

22 Ontario St. South 878-2365



JEAN SNOWDEN

Sales Representative
878-2365
878-3155



NO WORRIES

Worried that you can't find everything you want in one property? Check this list: Big all brick 2 storey in a classy area; 4 bedrooms (Huge master with 4-pc.), family room with fireplace, big kitchen with many oak cupboards & dishwasher, French doors separate the dining room, part finished rec. room with 3 pce., central vac, washer and dryer. Worried about privacy? The large yard has privacy fencing and backs to open space so you can enjoy your inground pool. Worried about interest rates? The vendor will help finance. Your only worry is will somebody get there first! Quick... Call Jean... \$329,900.

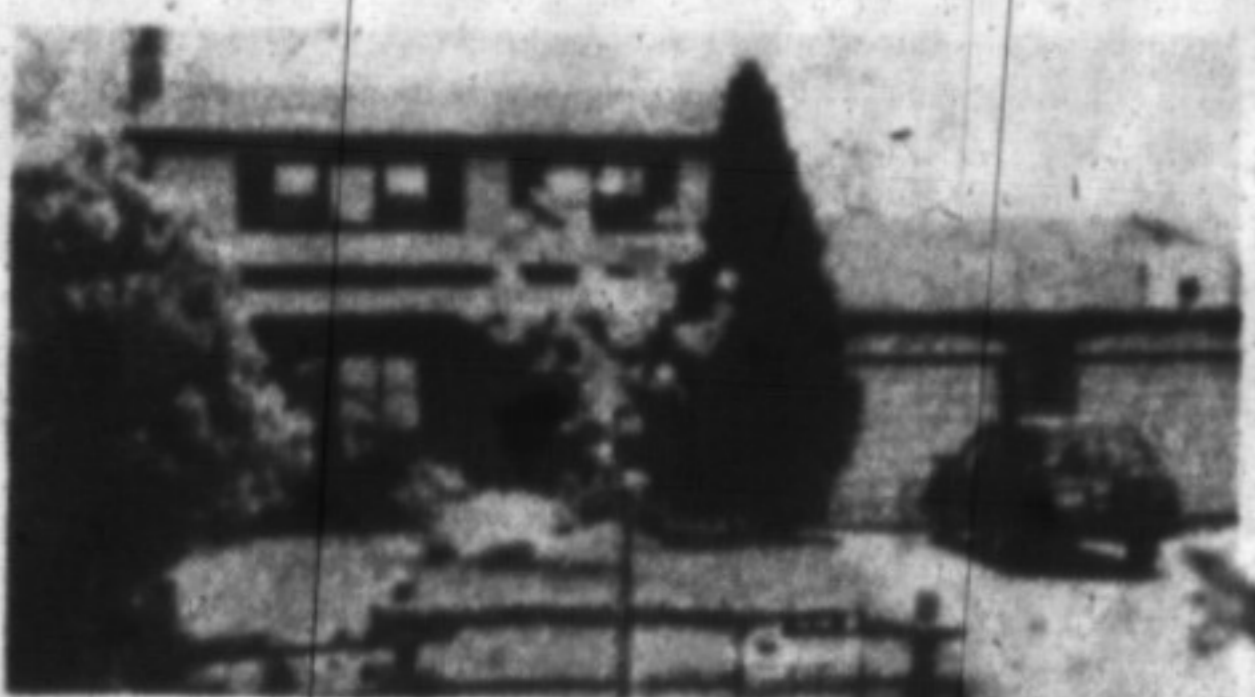
BELIEVE IT! 9-3/4% FINANCING FOR 2 YEARS
Comes with this 2 storey home with 2 fireplace, rec. room, pool on prime lot backing to wooded area. Call Jean \$194,900.

THINKING OF SELLING OR BUYING?
Ask me about marketing techniques tailored to a slower market and how to deal with high interest rates.

LOW DOWN PAYMENT AND 11-3/4% MORTGAGE TILL 1994
Buys an attractive home with mature trees. \$136,500.
CALL JEAN FOR DETAILS.

RON FURIK

Sales Representative
Office: 878-2365 Tor. Line 826-1030
Res: 878-3337



BUYING FIRM???

This may be the house for you. At \$224,900, this 4 bedroom, 2 bathroom home is nestled on a lovely treed bordered "Extra Large" yard. Features fireplace in living room, spacious eat-in kitchen, main floor laundry/mud room with a 2 car garage. To find out how soon you can move in, ask for Ron Furik.



FORGET RENTING

When you take possession of this 3 bedroom townhome with central air. Upgraded carpeting, eat-in kitchen, dining/living room combination with a walkout to patio. Asking \$152,000.



DOUG J. BUTSON

Sales Rep
Office 878-2365
Tor. Line 826-1030
Res: 878-2054

Call for Retail/Office Space or latest home price reductions

ESCARPMENT LOT - \$158,000, N.E.C. Approved. Heavily treed, drilled well.

IN TOWN LOT - \$159,500, Bldg. Perm. Approved. Vendor wants offer.

WILSON DRIVE 1637 sq. ft. with 2 inner offices and oak trim. Perfect bank, insurance space.

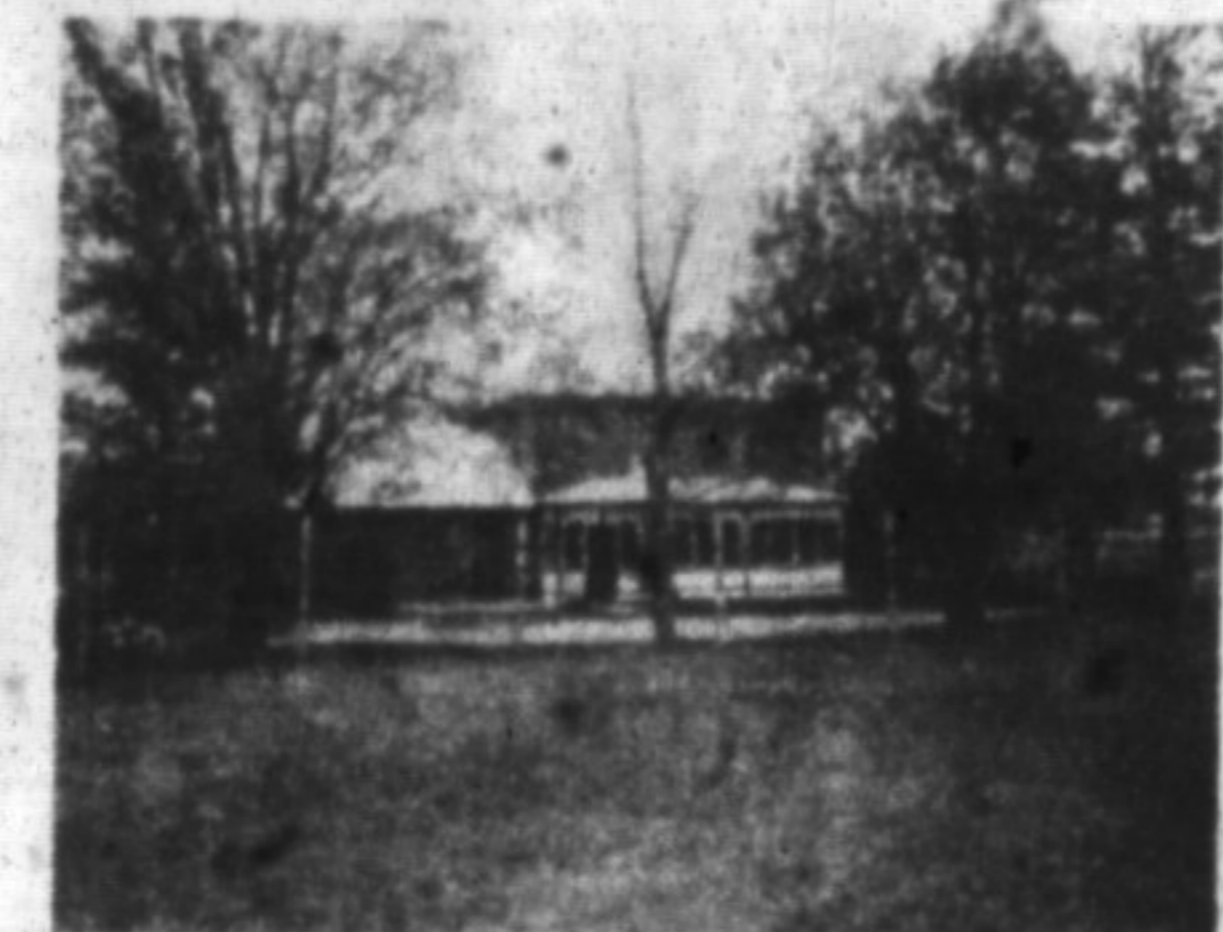
STEELES AVE - 7700 sq. ft. or divide to suit with offices, warehouse, 4 shipping doors

DERRY ROAD - 900 sq. ft. Busy plaza. Antiques.



RICHARD HIERMAN

Sales Representative
Office 878-2365
Toronto 826-1030
Residence 878-5806



VENDOR FINANCING AVAILABLE

With reasonable down payment. Time to check out this renovated brick Canadiana farmhouse on 20 acres with barn and facilities for horses. Great buy at \$499,000.



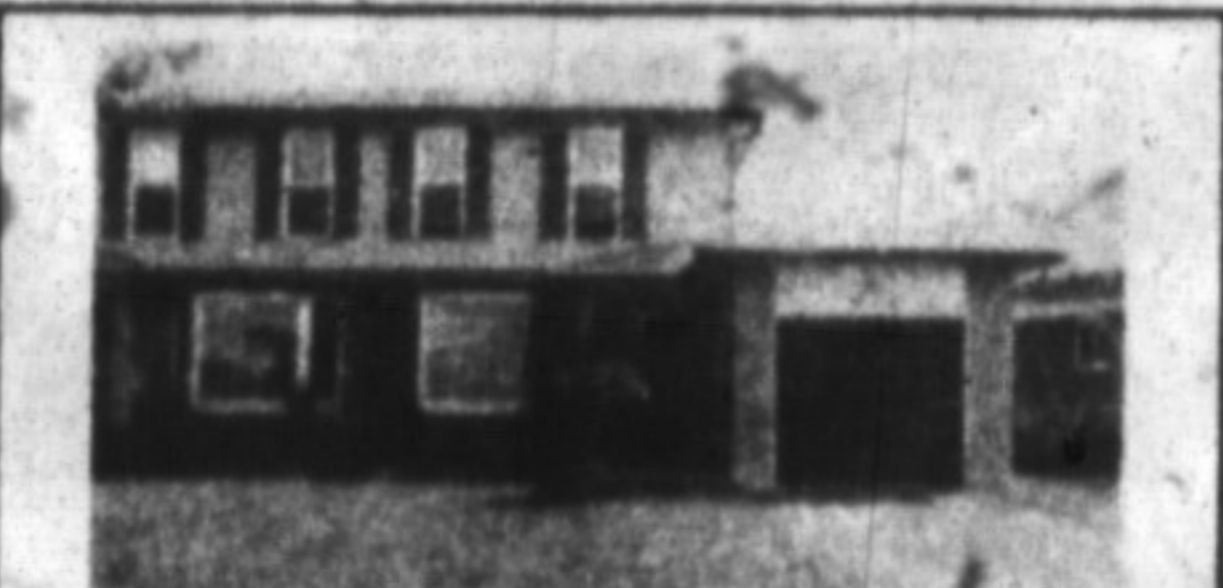
RENÉE HARROLD

Office: 878-2365
Res: 878-4526



THE BEST OF BOTH WORLDS!

Love the country but need town convenience? This 3 bdrm. sidesplit could be the answer. Set on a pretty 1/2 acre lot, it has family room w/fireplace, c/air and a 10-1/2% mtge. Now listed at \$274,900. Renée Harrold.



JUST MOVE IN! — \$179,900.

This 3 bdrm. semi on a well landscaped, large fenced lot has a finished basement & eat-in kitchen. Includes window coverings and much more. Please call Renée Harrold.

JEFF WRIGHT

SALES REPRESENTATIVE

OFFICE: 878-2365
TORONTO: 826-1030
RES: 878-5110



Jeff Wright



REDUCED FOR ACTION!

Now only \$254,900 for this feature loaded home. You can ENJOY swimming in your own backyard surrounded with trees, shrubs, colourful garden and gold fish pond. Inside RELAX in privacy using an extra large hot tub or just LOUNGE around in this spacious 3 bedroom; main floor family room den, 3 baths ++, detached backpat. Don't miss this one. Call today for your personal viewing appointment. Ask for Jeff Wright.



COUNTRY LIVING AT ITS BEST

On this 64+ acre farm with a view of Toronto and the Niagara Escarpment. Property features a custom built fully finished 3 bedroom home overlooking the entire property. The out buildings allow unlimited farming uses. This is a truly a property that must be seen to be appreciated. Call today to arrange your personal tour. Ask for Jeff Wright.

8685 SQ. FT. BUILDING ZONED M-1
On 1 acre lot with building expansion potential located on Nipissing Rd. close to all amenities. Some financing available. For more information please call Jeff Wright.

RE/MAX

GARY THOMAS

Broker/Owner

- Freda Lawrence 878-4860
- Maurice Miljour 876-4577
- Audrey Newell 878-5339
- Wayne Warner 878-1084
- Lina Warner 878-1084
- Doug Butson 878-2054
- Ron Furik 878-3337
- Sharon Kerley 854-0474
- Stella Hall 878-4339
- Gail Pullen 878-0110
- Phil Prestige 878-6924
- Betty Brading 878-6716
- Sandra Bailey (519) 658-9040
- Richard Hierman 878-5806
- Carol M. Brooks 875-0067
- Carole Stonhill 876-4913
- Lindsay McLaren 854-2451
- Ken Newell 878-5339
- Jean Snowden 878-3155
- Mike Morgan 878-8093
- Paul Page 878-2995
- Anne Talyor 854-9833
- Jeff Wright 878-5110
- Betty Ingle 827-4286
- Ron MacNeil 878-0198
- Clayton Hackenbrook 875-0771
- Alan Brooks 875-0067
- Renee Harrold 878-4526

Carole Stonhill

876-4913
Res. Sales Rep



Stella Hall

878-4339
Res. Sales Rep

Office 878-2365

"It's time to take a drive"

and take advantage of the reductions on these fine homes at prices for every pocket book.



REDUCED \$249,000.
905 CEDARBRAE



REDUCED \$241,900.
874 PEARN AVEUE



REDUCED \$209,900.
597 JOYCE



REDUCED \$149,900.
661 CHILDS



REDUCED \$232,000.
36 LORNE SCOTS DRIVE



REDUCED \$369,900.
712 ROBERTSON CRES.



\$158,900



REDUCED \$209,900.
43 LORNE SCOTS DRIVE



Above the Crowd!