



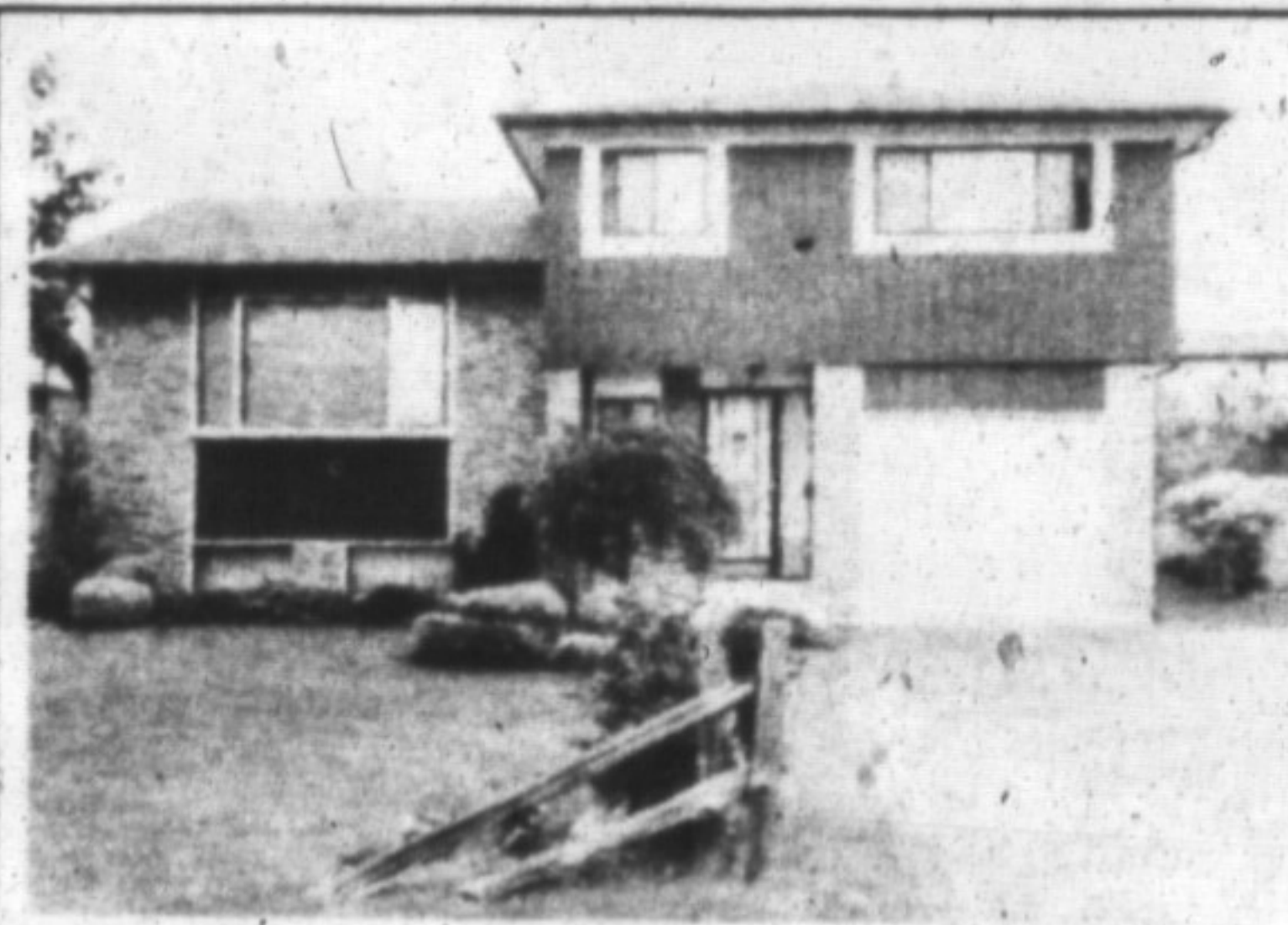
Canada Trust/Realtor

The Canada Trust Company

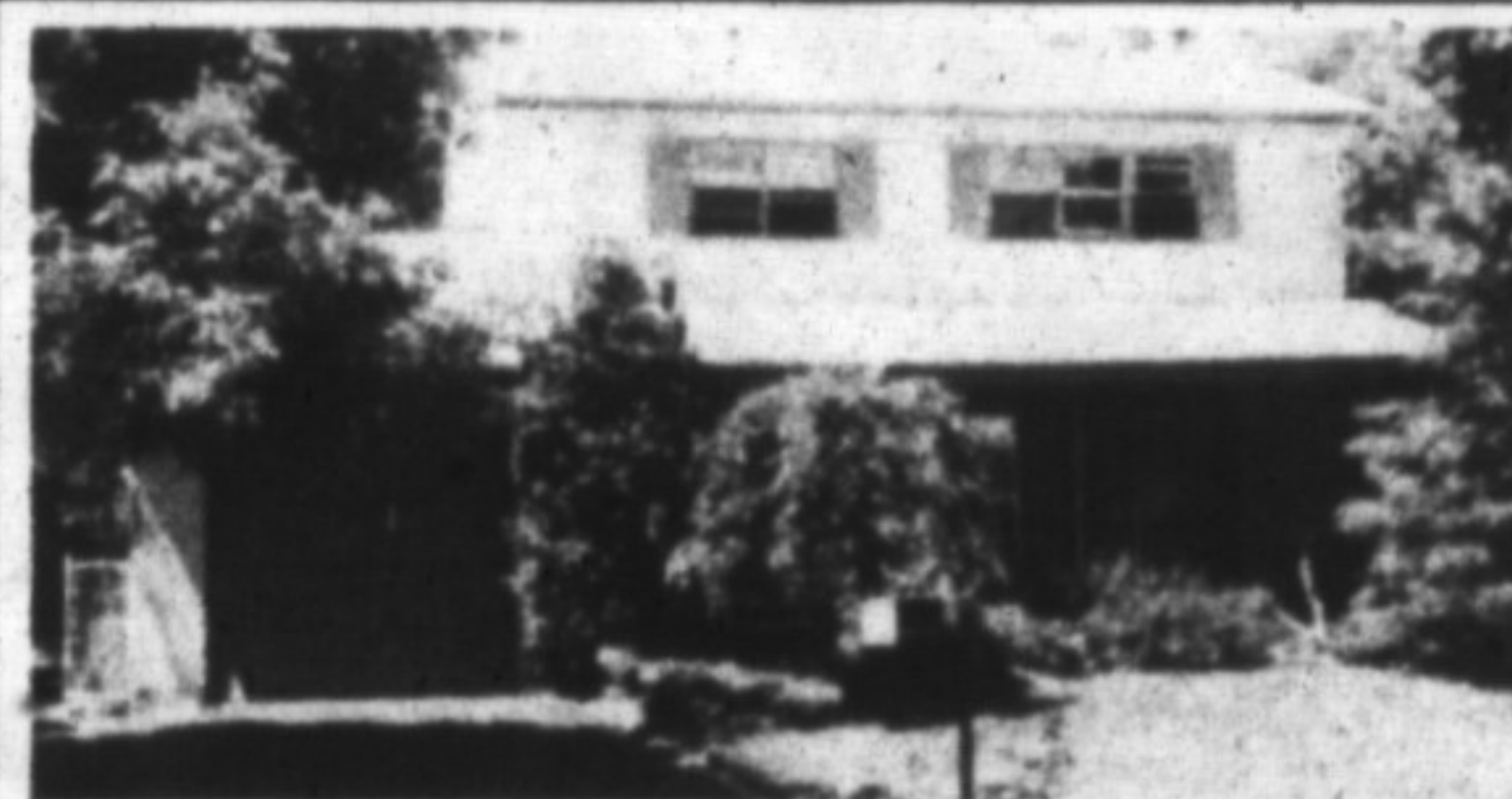


Milton, Campbellville (416) 875-2211
 North Milton (Nassagaweya) (519) 853-2640
 Oakville, Burlington (416) 842-1920

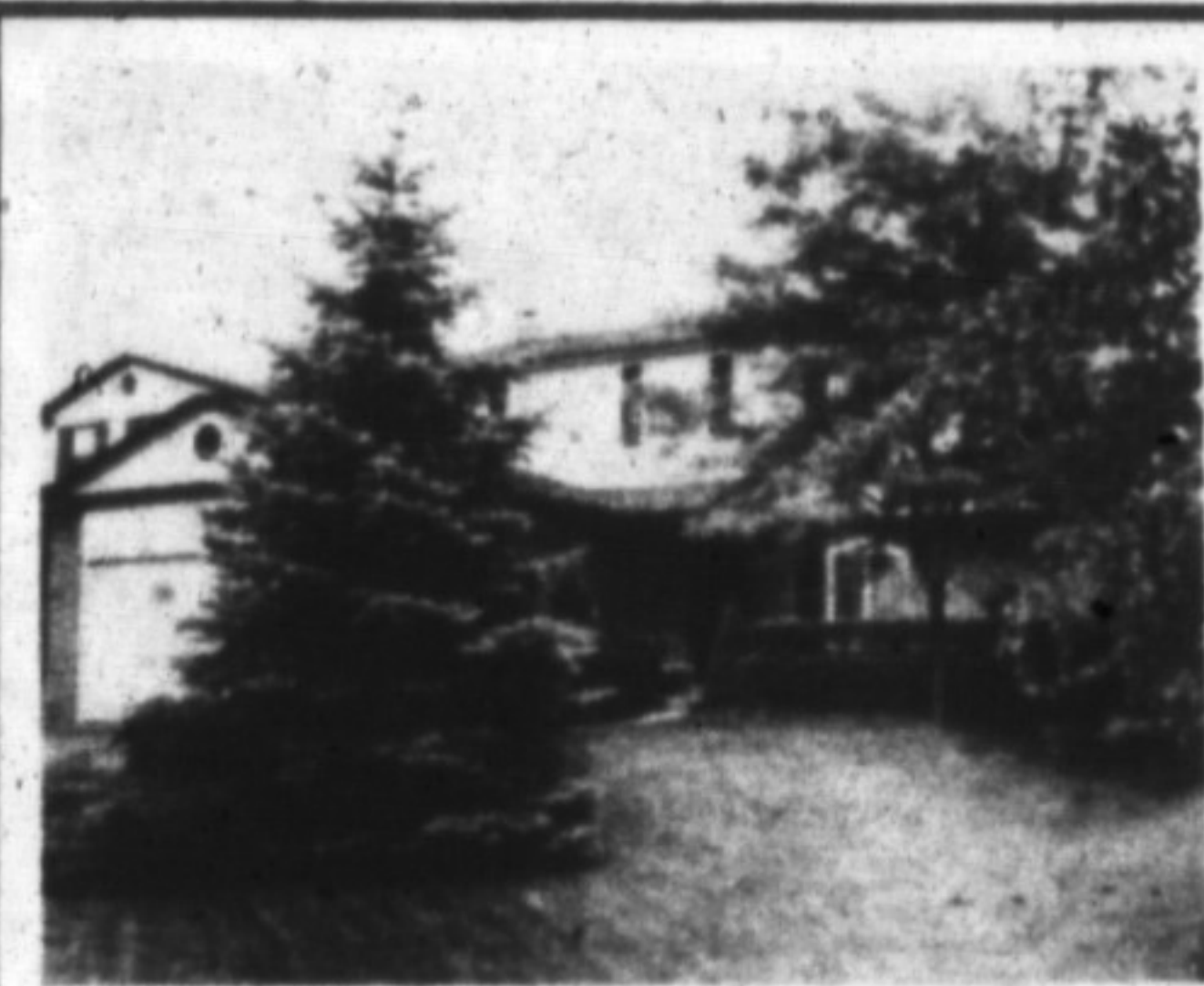
GEORGES A. JANSEN Town & Country Sales Representative



812 CEDARBRAE AVE.
 \$207,500 - WOW! This well maintained 4 bedroom one owner home is looking for a family. Triple windows, central air, beautifully decorated. Make this house your home. First time on the market..



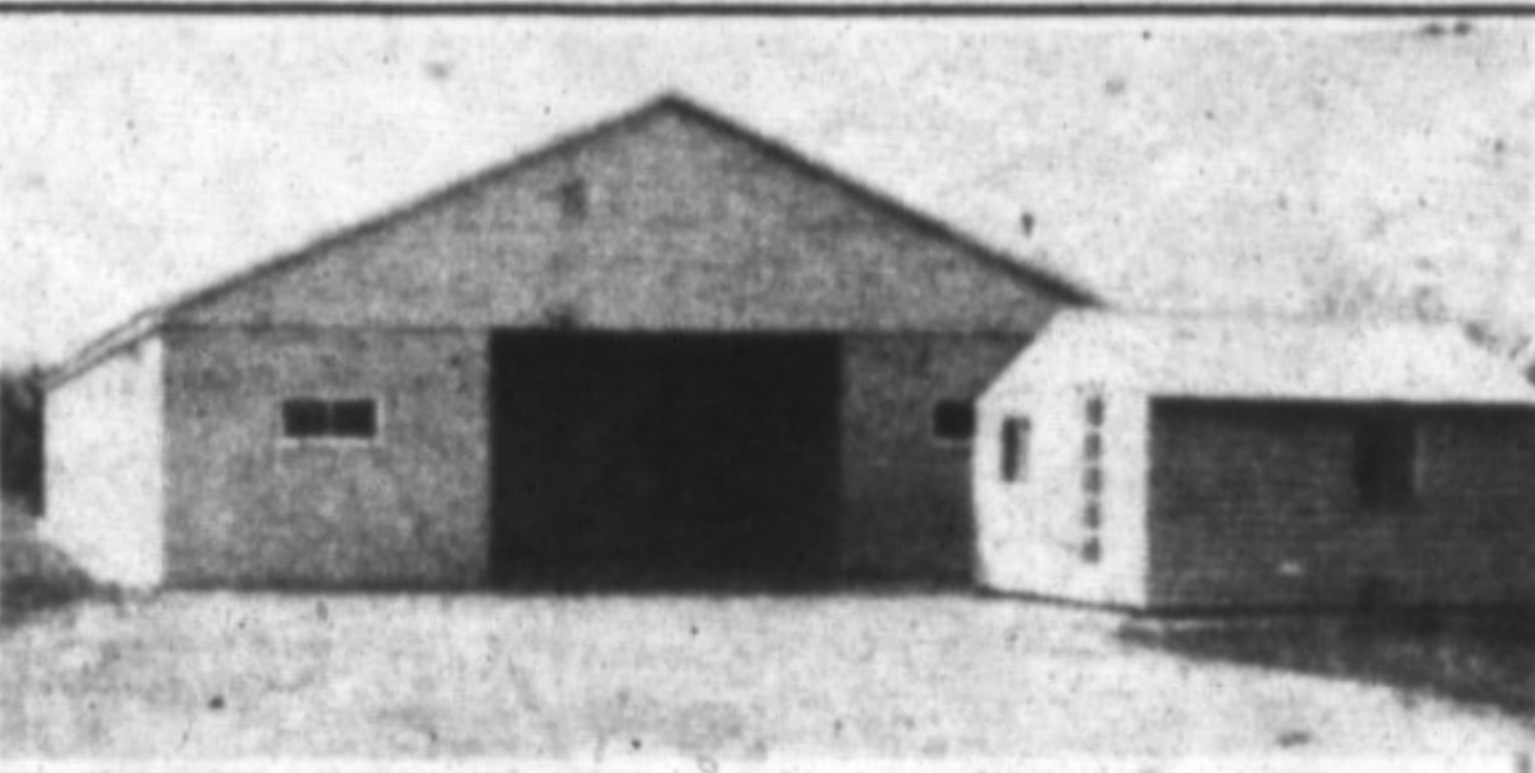
144 MACDONALD CR.
 \$234,900., completely finished from head to toe! 4 bedrooms, 3 bathrooms, fully finished rec room in basement, large private deck, backing onto green space.



MILTON JEWEL
586 MOORELANDS CR.
 \$287,500. asking for this lovingly maintained, 4 bedroom home finished from top to bottom. Gorgeous hardwood entry floors to kitchen, 2 walkouts, finished rec room with wet bar, professionally landscaped. Must be seen. Call Ian or Marilyn Wykes 842-1920 or res. 844-9859.



3045 - 15 SIDE RD., MILTON
 \$298,000. - A little bit of country 3.3 acres, this raised bungalow is waiting for you. Located in Brookville, only a couple of minutes to the 401. Potential future investment, 3 bedrooms and 2 fireplaces.



BROOKVILLE/MILTON 42 ACRES
 \$550,000 - Hydro, well, septic and sewer, horse barn on site - All we need now is your plans. Excellent future investment and good country living - Backing onto Brookville.

10 ACRE BUILDING LOT
 \$248,000 - Bubbling spring, well, mature woods...Ready to Go - Moffat area - Let me show it to you.

Rent your country home with an option to purchase. 16 acres, 3 bedrooms, double garage, inground pool, pond, circular drive, newly decorated, 10 min. only to the 401.

ANTICIPATING A MOVE TO GUELPH?
 JUST LISTED: A beautiful 9 month new, all brick home, 2800 sq. ft. north end of Guelph near Hwy. 6, 4 bedrooms, executive court, fenced, backing onto pond - \$374,800.

For A Free No Obligation Market Value Opinion
 Call
Georges A. Jansen

Not intended to solicit properties already for sale.

FURLONG COLLINS GUNDING

BARRISTERS & SOLICITORS

Ask us if you need a lawyer

878-8123

Ask us if you need a lawyer

BANKS	VARIABLE RATE	6 MONTHS	1 YEAR	2 YEARS	3 YEARS	4 YEARS	5 YEARS
Cdn. Imperial	14 1/2 op	14 1/2 op	14 1/2 op	14 1/2	14 1/2	14 1/2	14 1/2
Bank of Montreal	14 1/2 op	14 1/2 op	14 1/2 op	14 1/2	14 1/2	14 1/2	14 1/2
Laurentian Bank	n/a	14 1/2 op	15 1/2 op	14 1/2	14 1/2	14 1/2	14 1/2
National Bank	n/a	15 op	15 1/2 op	14 1/2	14 1/2	14 1/2	13 1/2
Bank of N. S.	14 1/2 op	14 1/2 op	14 1/2 op	14 1/2	14 1/2	14 1/2	14 1/2
Royal Bank	14 1/2 op	14 1/2 op	14 1/2 op	14 1/2	14 1/2	14 1/2	14 1/2
Toronto-Dominion	14 1/2	14 1/2	14 1/2 op	14 1/2	14 1/2	14 1/2	14 1/2
TRUST COMPANIES							
Cabot Tr	n/a	14 1/2 op	14 1/2 op	14 1/2	14 1/2	14 1/2	14 1/2
Canada Trust	14 1/2 op	14 1/2 op	14 1/2	14 1/2	14 1/2	14 1/2	14 1/2
Central-Guaranty Trust	14 1/2	14 1/2 op	14 1/2 op	14 1/2	14 1/2	14 1/2	14
Co-operative Trust	n/a	13.85 op	14 1/2 op	14 1/2 op	15 op	14 1/2	14 1/2
General Trust	n/a	15 1/2 op	15 1/2 op	14 1/2	14 1/2	14	13 1/2
Guardian Trust	14 1/2 op	14 op	14 1/2	14 1/2	14 1/2	14	13 1/2
Household Trust	n/a	14 1/2	14 1/2	14 1/2	14 1/2	14 1/2	14
Montreal Trust	n/a	14 1/2 op	14 1/2 op	14 1/2	14 1/2	14	13 1/2
National Trust	14 1/2	14 1/2	14 1/2 op	14 1/2	14 1/2	14	13 1/2
Premier Trust	n/a		14 1/2 op	14 1/2	14 1/2	14	13 1/2
Preneur Trust	n/a	14 op	14 1/2 op	14 1/2	14 1/2	14 1/2	13 1/2
Royal Trust	n/a	14 1/2 op	14 1/2 op	14 1/2	14 1/2	14	13 1/2
Standard Trust	n/a	14 1/2 op	14 1/2 op	14 1/2	14 1/2	14 1/2	13 1/2
Duca Credit Union	n/a	14 1/2	14 1/2 op	14 1/2	14	14	13 1/2
Jet Power Credit Union	n/a	14 1/2 op	14 1/2 op	R.O.R.	R.O.R.		R.O.R.

NOTES: ** Interest rate charged subject to adjustment during term of mortgage. Please consult institutions for term of years available.
 R.O.R. - Rates on request R/O-Renewals only
 op-Open N/A-Not applicable
 ---Not quoting

RATES TAKEN
July 13, 1990
 Fiscal agents specialize in trust and loan investments, and also supplies free consumer information on these investments. Phone: 844-7700.

CHRISTIE & WOODS REAL ESTATE LTD.

189 Main Street, Milton

878-2095



OPEN HOUSE
 Sun., July 29
PRICE ADJUSTMENT
730 ROBERTSON CRESCENT
 Large all brick 4 bedroom home, sits well on a huge lot, backing onto parkland with bike trails, warm, comfortable family room with stone fireplace, 3 large bathrooms, main floor laundry has walkout, large family sized kitchen. Best location. Call Tim Nevins, owner must sell! Was \$329,900 NOW \$314,900.



SEMI DELIGHT
 10 reasons why
 • ideal location • large private lot
 • private deck off kitchen
 • 3 large bedrooms • garage • finished basement • fireplace • close to schools
 • close to shopping
 Price \$ \$172,000. That's 11 reasons why call Tim Nevins, Thinking of selling? Call Tim Nevins! You will be sold!



COUNTRY RANCHER
 Brick raised ranch, 2 car garage on 3/4 acre lot. Patio-deck, eat-in kitchen and living/room with fireplace. Walkout basement with finished rec. room and 2nd fireplace and two extra bedrooms, to view this 5 bedroom home, call Yvonne Christie 878-2095.



FABULOUS MORTGAGE
 Vendor take back on this home. Call Marg Christie.

BEAUTIFUL ACREAGE
 Awaits your custom estate home, located minutes to town, this parcel offers all the seclusion one could ask for. Vendor is interested in seeing an offer - TRY ONE! call Cam Gall at 878-2856.

COMMERCIAL WANTED
 I have a serious qualified purchaser interested in a downtown location, store with apartments above. If you have something similar contact Cam Gall at 878-2095.

Yvonne Christie Broker Owner 878-2095
 Tim Nevins * 875-1263 Cameron Gall * 876-2856
 Allan Christie * 878-2095 Margaret Christie * 875-2443
 * Sales Rep.