

RE/MAX

Miltowne Realty Corp.

"Locally owned and operated"

22 Ontario St. South 878-2365

RE—The Canadian Champion, Wednesday, July 18, 1990



RICHARD HIERMAN
Sales Representative
Office 878-2365
Toronto 826-1030
Residence 878-5806



SUMMER IN THE COUNTRY

Enjoy those warm summer evenings on the screened-in porch looking through the trees at your 20 acre spread. The renovated Canadiana brick farmhouse boasts 2 1/2 baths, 3 bedrooms, large kitchen and main floor laundry. Don't miss this gem. Asking \$499,000.

JEFF WRIGHT

Sales Representative
OFFICE: 878-2365
TORONTO: 826-1030
RES: 878-5110



INVESTMENT LAND SALE:

\$1,200,000.
64+ acre farm with long term potential. This unique property has it all - a view for miles, variable topography, both cleared & treed, ideal location in the North Burlington area just east of Kildee. For more information, please call Jeff Wright today.



INDUSTRIAL SALE: \$799,000.

8685 sq. ft. building - 1 acre lot - M-1 zoning. Expansion Potential - Financing available - Ideal Location. For more information call Jeff Wright.

YOU SET THE PRICE!!!

Vendors are moving and offer you the opportunity to purchase their home. 3 bedrooms, 3 baths, main floor family room, den and inground pool and much more. To find out all about this home call JEFF WRIGHT and make your personal viewing appointment.

HERITAGE HOME, LAND & WATERWAY
235 acres of prime land with Rideau Canal access & frontage on 2 adjoining lakes 3 hours east of Toronto. Home is restored & fully furnished. Call today for details on this property.

Above the Crowd!

RE/MAX



FREDA LAWRENCE
Sales Representative
OFFICE 878-2365
TOR. LINE 826-1030
RES. 878-4860



3 bedroom all brick bungalow on 150 x 150 lot in country, close to Oakville, Mississauga and 401 features include: country kitchen, 4-2 baths, main floor family room with beamed ceiling & fireplace. Asking \$279,000. Vendor will take back.



\$143,000 AT 12-1/4% for 3 years + vendor will take back a second. All brick ranch on 50 x 125 mature lot. Kitchen and bath have been extended, 3+ 1 bedrooms & 4 & 3 pc. bath. For more details call Freda Lawrence. Asking \$194,500.



This bungalow is partially built on a 111 x 199 foot lot just south of Carlisle. Features include: main floor laundry and family room, fireplace, all wood kitchen cupboards, central air & vacuum, double garage. Asking \$283,000.

Quality builder will build your dream home on this 111 x 266 lot. For more particulars call Freda Lawrence.



SHARON KERLEY
Sales Representative
Office 878-2365
Toronto 826-1030
Residence 854-0474



MAKE YOUR MOVE

To this beautifully decorated home featuring living room with fireplace, separate dining room, eat-in kitchen with walk-out to fully fenced yard, spacious master bedroom and 1 1/2 baths. Listed at \$176,900 Call Sharon Kerley.



APPLEBY LINE

Country home, close to town on private, treed 1 1/2 acre lot. Large formal living room with fireplace and french door walk-out. Completely renovated kitchen features new cabinets, ceramic flooring, track lighting and walk-out to 16' x 32' inground pool. Listed at \$389,900. For more information call Sharon Kerley.



POTENTIAL GALORE

Approx. 2400 sq. ft. partially renovated 1878 schoolhouse features huge, bright living room with fireplace, 4 bedrooms, including large master with fireplace, separate dining room with sliding door walkout to deck, main floor den, laundry and powder room, 3 yr. old inground pool. All on a fully fenced 1/2 acre lot. Just minutes from town with a view of the Niagara Escarpment. Priced to sell at \$279,900. For more information call Sharon Kerley.

COTTAGE COUNTRY

Spacious winterized waterfront home on sandy beach. Features 28' heated Florida room overlooking beach, large kitchen, dining room combo, living room with stone fireplace, huge patio with shuffleboard court. Lot 50 x 210 plus. For more information call Sharon Kerley.

SANDRA A. BAILEY

Sales Representative
Bus. 878-2365
24 hr. Pager 878-2020
Tor. Line 826-1030

RE/MAX Miltowne Realty Corp.
22 Ontario St. S., Milton



OPEN HOUSE
867 CHILDS DR.
SUN. JULY 22
2:30-4 P.M.

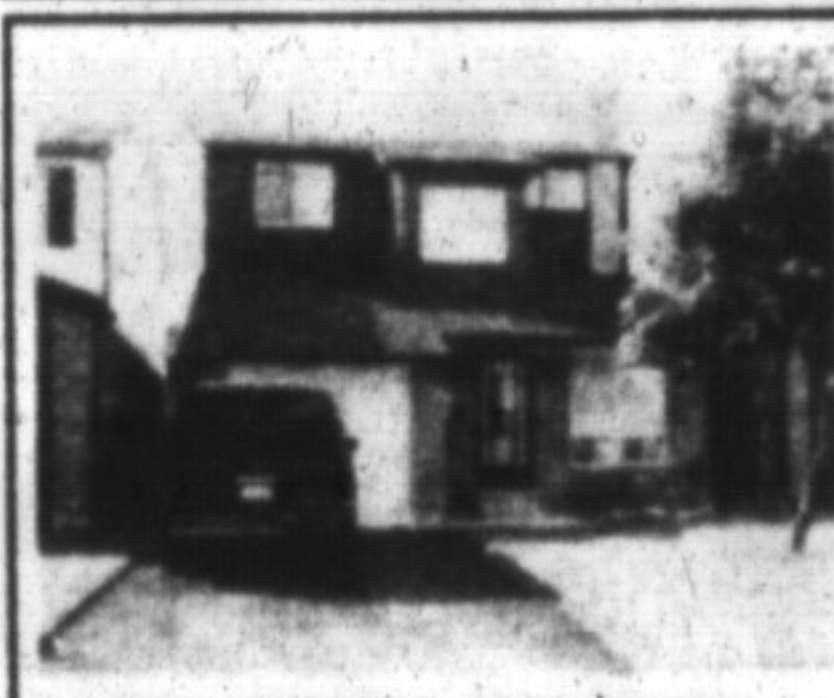


11-3/4% JANUARY 1994 MORTGAGE

Come see for yourself. Has central air/central vac. Includes washer & dryer. Lovely cared for! Double drive and garage. Still more extras.

Price \$229,800

Please call Sandra A. Bailey for personal viewing 878-2365



12.25% FEBRUARY 1994 MORTGAGE

Bet you will like this one. Redecorated & freshly painted. Includes new fridge and stove. Affordable, I'll say. Reach for this great mortgage.

Price \$189,800

For a personal viewing please call Sandra A. Bailey



"I DARE YOU"

To view this lovely 3 bedroom townhouse. It has been decorated from top to bottom/new vinyl flooring/upgraded broadloom, paint & wallpaper. This is truly a steal. Priced at \$146,800. For a personal viewing please call Sandra A. Bailey.

WHY GO WEST?

This 1,375 sq. ft. link home is the answer. 3 bedroom, all brick, nice size lot, close to 401. For more info. about this home, please call Sandra A. Bailey. \$169,800

HAVE YOU HEARD?

This 2,200 sq. ft., 4 bdrm. home has it all, ceramic/upgraded broadloom, 2 fireplaces, 4 bathrooms, 4 bedrooms, basement completely finished. Make an offer. \$239,800. Please call Sandra A. Bailey for further details.

MISSISSAUGA HERE I COME

That is what you will say after viewing this 4 bedroom townhouse, grey broadloom throughout, freshly painted, lovingly landscaped/fenced yard. Price is right \$167,800. Please call Sandra A. Bailey for personal viewing.



Above the Crowd!



MIKE MORGAN

Associate Broker
878-2365
826-1030
(Tor. Line)
878-8093
(Res.)



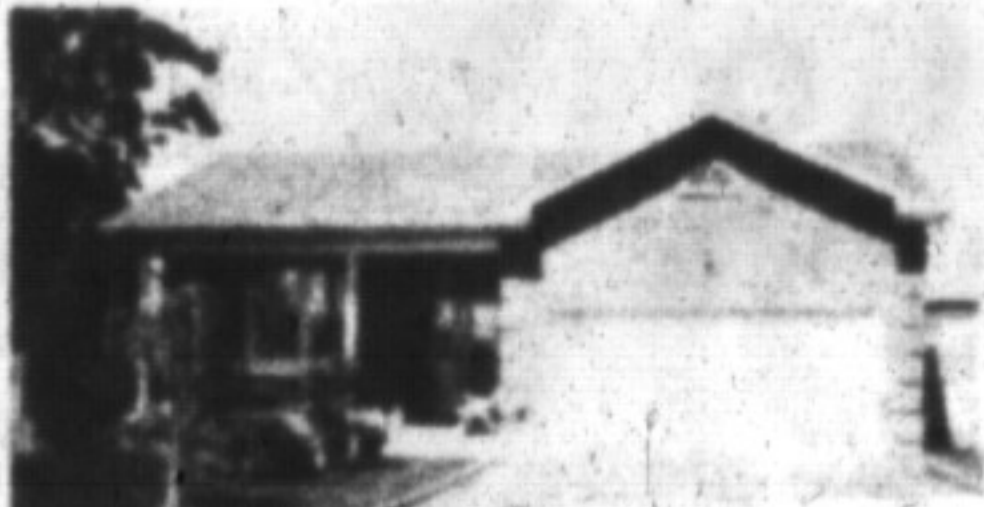
STRETCH OUT

Mature trees and an extra-wide lot make the perfect setting for this nicely decorated 3 bedroom side-split. Central air, extensive decking and a separate pool area make this home worth seeing. Call Mike. \$199,900.



EXCELLENT VALUE

Beautiful, bright, upgraded raised bungalow with numerous extras. Oval inground pool, central air, 60 x 100 landscaped lot - plus a finished lower level that can be a complete in-law suite. To hear all about it call Mike Morgan. \$189,900.



YOUR CHANCE TO SPREAD OUT

In this spacious 4 bedroom brick backsplit in desirable Timberlea. A family room with fireplace and walkout, to full bathroom and hardwood floors make this a perfect family home. Call Mike. \$259,900.



CHARM AND CHARACTER

This is your opportunity to get a lovely home on a 62' x 282' in town lot with a complete in-law apartment on the upper floor. Charming bright living room and beautiful oak kitchen makes this unique home the perfect answer to your particular needs. Call Mike Morgan. \$219,900.



3-3/4% FOR 2 YEARS

Fantastic home with outstanding financing available to you. Make the move to 1387 sq. ft. of upgrades plus a huge finished basement with wet bar. Don't miss the 2 fireplaces, French doors and a backyard with pool and western exposure overlooking a treed area. Call me. \$194,900.



SOLID VALUE

Almost 2200 sq. ft. of luxury, boasting of a dream kitchen, built-in appliances, oak cabinetry and centre island. Extensive upgrading, central vac, central air, auto garage door opener, oak railings and more. A must to see. Call Mike. \$279,900.



12% FINANCING TIL '94

Beautifully renovated older home with Main Street exposure and commercial zoning. Call Mike Morgan. \$249,900.

IT'S TIME TO BUILD

1) 1.4 acres - Moffat \$159,900

2) 100' x 200' lot with well \$165,000.