


Century 21
 Armour Real Estate
 (416) 471-2121



COUNTRY LIVING
 Milton - 48 acres rolling land,
 Rented Brick House with a modern office and in-law apartment.
 Two ponds, shed and a barn.
 E.X.C.E.L.L.E.N.T. V.A.L.U.E.!!
 Century 21 Armour Real Estate Inc. Markham Phone: (416) 471-2121

ACTON SACRIFICE
\$179,900

One year new. Save up to \$255.00 / month off today's rate for two years on new financing. October 17 possession available.

Call Jim McLellan
 (519) 740-2727
 Donnelly Results Realty Inc.



ONE OF A KIND

This stone schoolhouse, in village of Kilbride, built in 1876 has been restored to perfection. It combines the grandeur of classic gothic architecture with all modern amenities. A rare opportunity for the connoisseur to acquire a genuine piece of Canadiana. Offered at \$549,000.

Marlene Hunt, Sales Representative
 Re/Max advantage realty inc.
 Hamilton (416) 521-1315
 Ancaster (416) 648-1315 Burlington (416) 333-3011

Tune in to safety when mowing the lawn

Dear John
 John Deere answers your lawn and garden questions

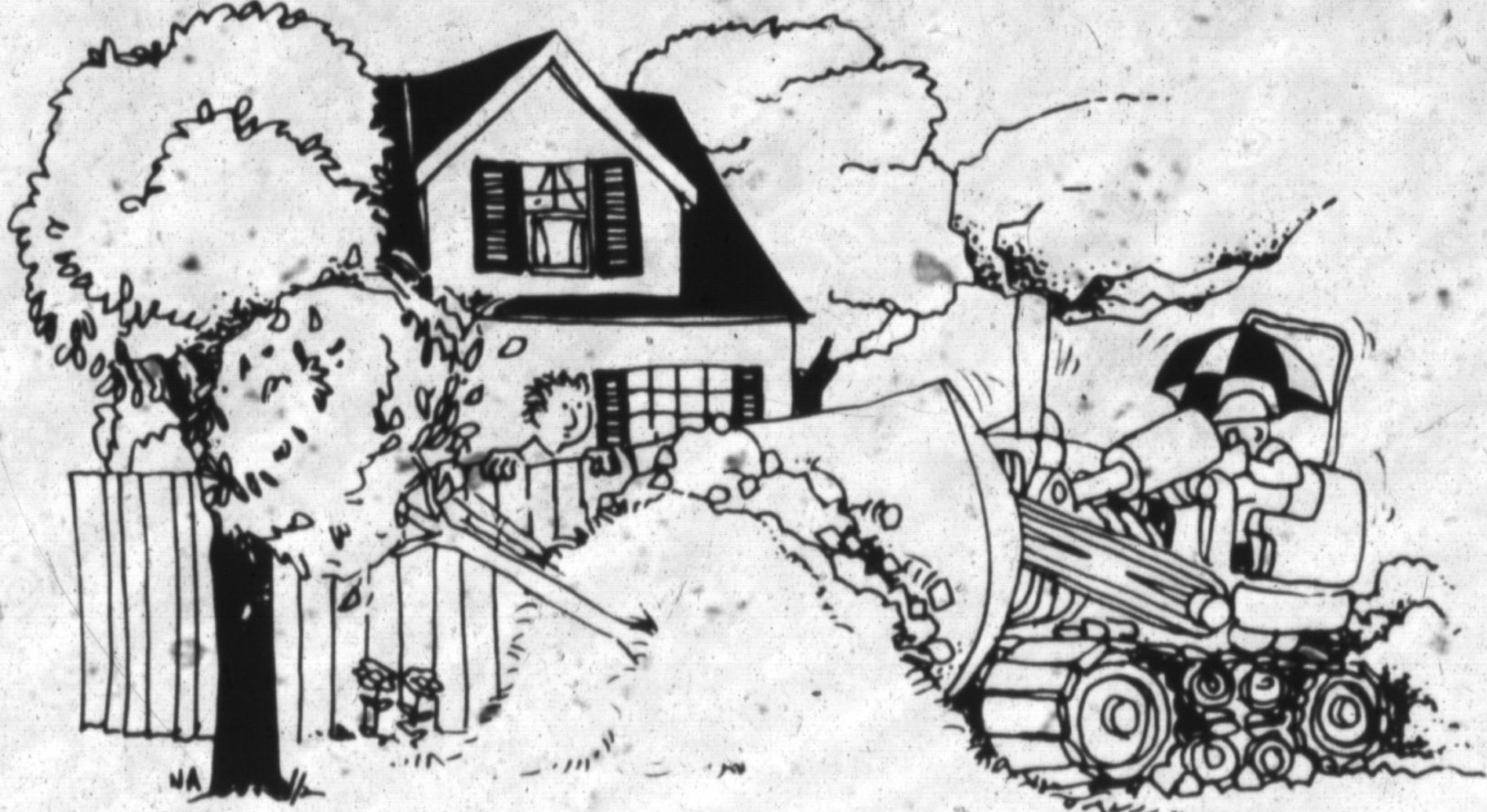
Dear John:
 Dad says its dangerous to wear my stereo headphones while I mow the lawn, but I like my music! Can you settle this one?

Dear Seeker of Harmony:
 Dad's right in key this time — stereo headsets aren't proper mowing gear. Safe mowing requires the operator's full attention.

Equipment operators should be aware of what's going on around them while mowing, and be able to act quickly if necessary. You may hit a sour note if, for example, you don't hear a child running up behind you, or you don't hear a trapped rock rolling around inside the mower deck or caught by the blade.

First of a Series...

DREAM WEAVERS



Say it isn't so!
 Elmer was reading the weekend paper in the serenity of his new backyard when his eye caught a disturbing headline:

"Proposed Traffic Artery to Ease Congestion."
 The location? Just beyond Elmer's backyard fence!

You see, Elmer purchased his new home privately. There was no mention of road plans — only talk of the property's privacy.

Now, had Elmer worked with one of the 700-plus sales representatives re-

gistered with the Oakville, Milton and District Real Estate Board he would have known about the road. And much more. Far beyond property values, your area real estate professional can tell you about our town's past, present and future.

Before signing on the dotted line, consider a detailed tour of the neighborhood of your choice. Contact an informed member of the Oakville, Milton and District Real Estate Board.

They're specialists in delivering dreams — not nightmares.



THE OAKVILLE, MILTON AND DISTRICT REAL ESTATE BOARD
 152 Trafalgar Road, Oakville (416) 844-6491

Multi-directional mowing

Dear John:
 I usually mow my lawn north to south, but my daughter says I should change directions occasionally. Why?

Dear Polar Mower:
 It is a good idea to head in a different direction each time you mow. Grass that's repeatedly mowed in the same pattern can start to lean in that direction. The result? Some grass leaves escape the cutting blade, and your lawn develops skipped spots and an uneven cut.

Try going north/south one week, east/west the next, and on a diagonal the third week.

Growing flowers in a small area

Dear John:
 Do you have any suggestions for growing flowers without a lot of yard space?

Dear Flower Child:
 Instead of planting flowers in the ground, try growing them in large pots. Combine brilliant assortments of flowers in big decorative containers to place along your porch, windowsills and driveway, or to hang in the yard. Begonias, nicotiana, impatiens, browallia and ivy are all good choices for pot gardens.

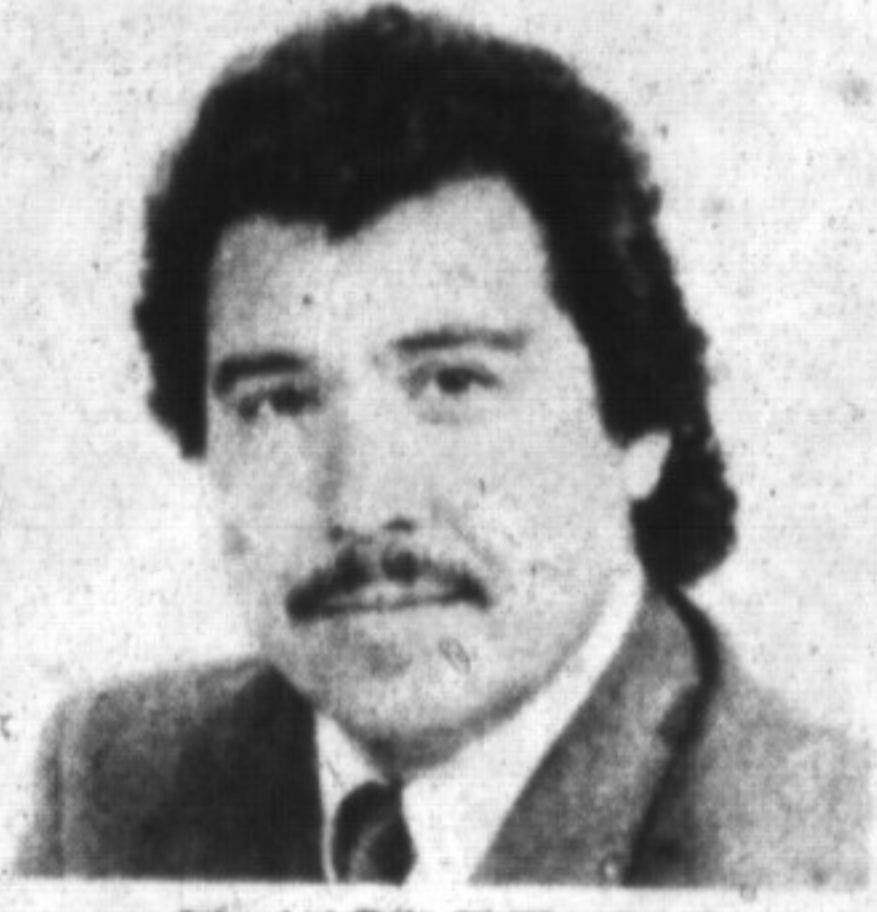
When planting, use pots with drainage holes covered with mesh screening. Mix a slow release fertilizer in with the potting soil, and water thoroughly with water-soluble fertilizer.

Century 21

GOLDEN REAL ESTATE LTD.

420 Main St. E.
878-8495

Jim and Lorraine Kerr, Brokers/Owners of Century 21 Golden Real Estate Limited, are pleased to announce the appointment of AL VOLPE to their sales staff. Al invites all of his friends and acquaintances to call him at 878-8495 to discuss their real estate needs.



AL VOLPE

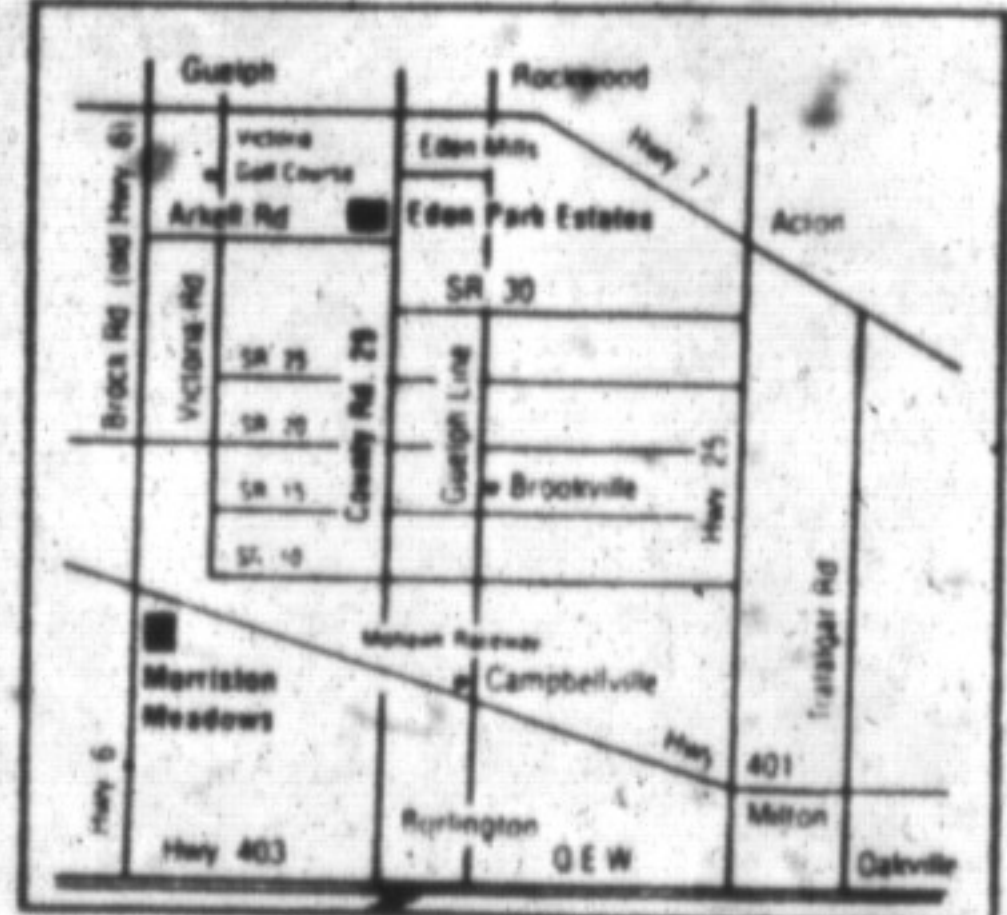
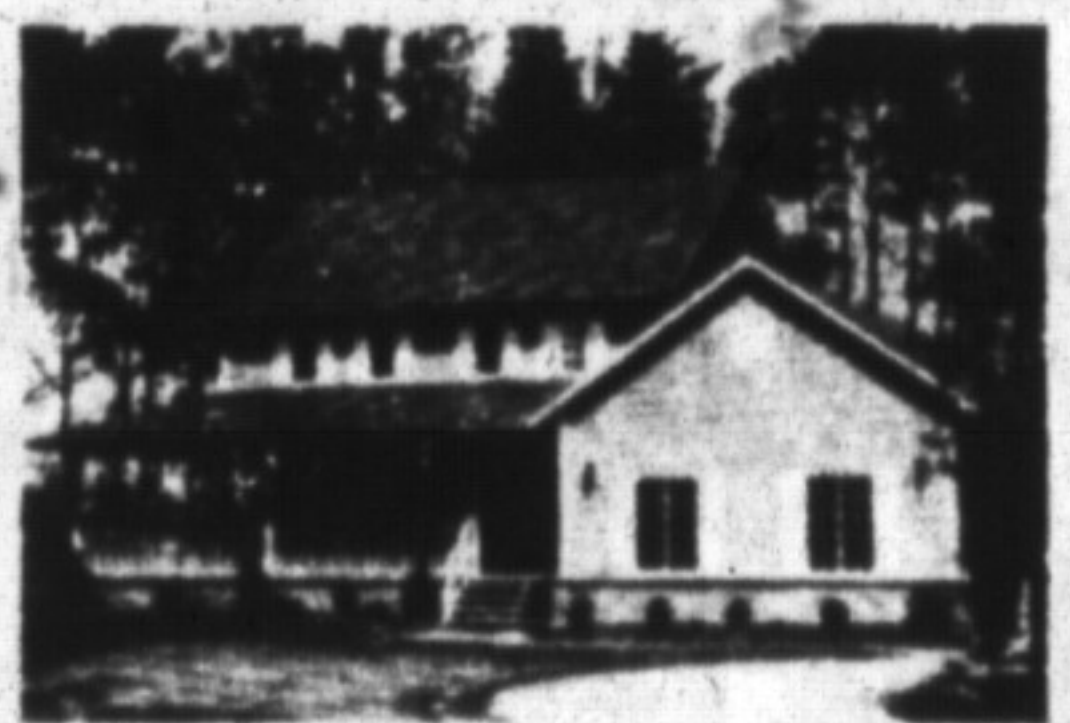


BISHOP ESTATE HOMES

Feel the warmth, and witness the elegance. The unique country setting of your executive class home situated on a 2 acre lot in EDEN PARK ESTATES pampers you with city type conveniences. Minutes to city activities, yet located in secluded, treed privacy for year round peacefulness.

11 1/4% - 2 yrs. some conditions apply

Model Home Open
 Sat. & Sun. 1-5 pm Tues. & Weds. 5-8 pm
 Model Home Phone (519) 856-1220



30 minutes west of Mississauga

For more information call:
 Cheryl Chamula at
 Bishop Estate Homes (519) 856-1220
 Dave Wilson representing
 Mason Real Estate Ltd. (519) 824-1811
 John Draak representing Century 21
 DiSapio Realty Ltd. (519) 767-2100
 Irene Pries representing Royal City Realty,
 Halton Ltd. (416) 450-9344