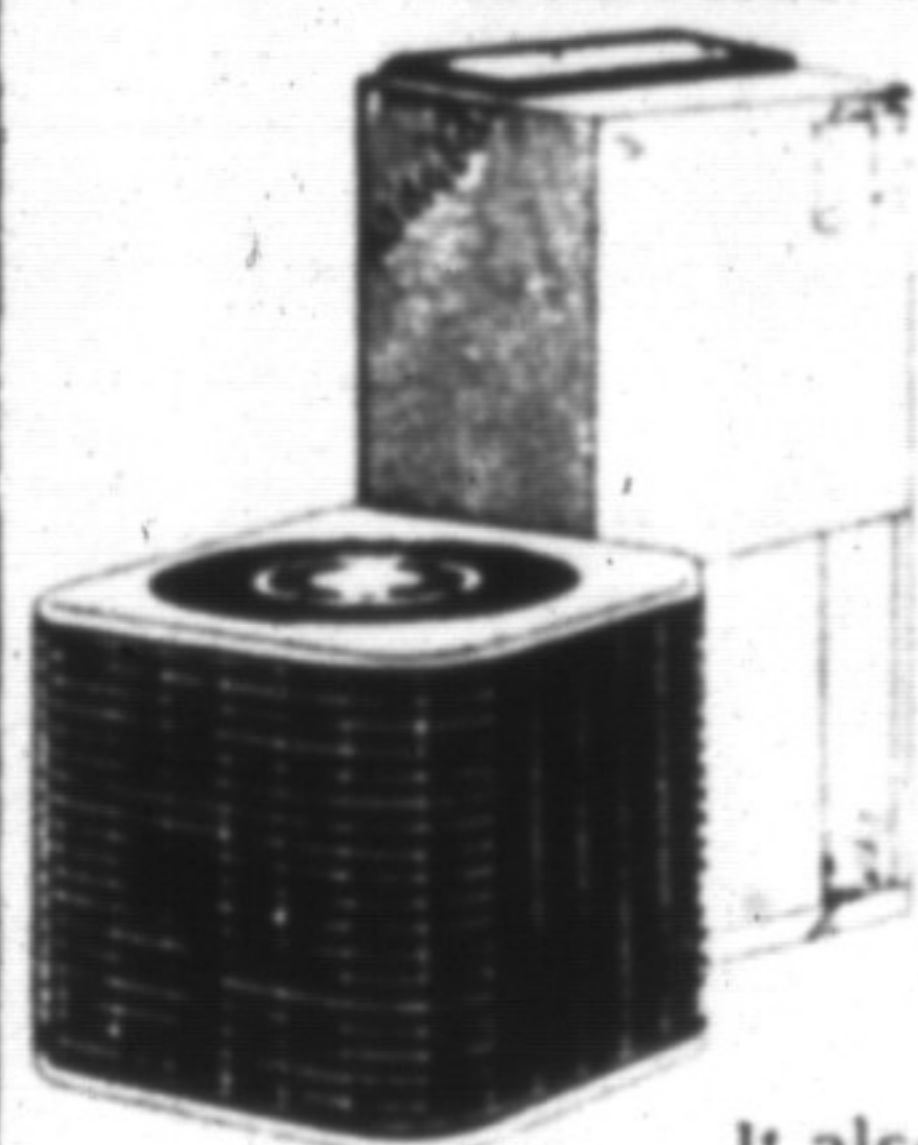




Winter Heating / Summer Cooling  
 You get the best of both worlds  
 with our money-saving  
 Nordic II Heat Pump



Actually it's the best of three worlds. You get winter heating. Summer cooling. And energy costs savings.

You see, the ICG Nordic II 2-piece Heat Pump operates like a furnace. By extracting heat from the outside air and circulating it throughout your home.

It also provides central air conditioning by extracting heat and humidity from inside your home and pumping it outside. Best of all, you will save money on energy costs with the higher efficient Nordic II.

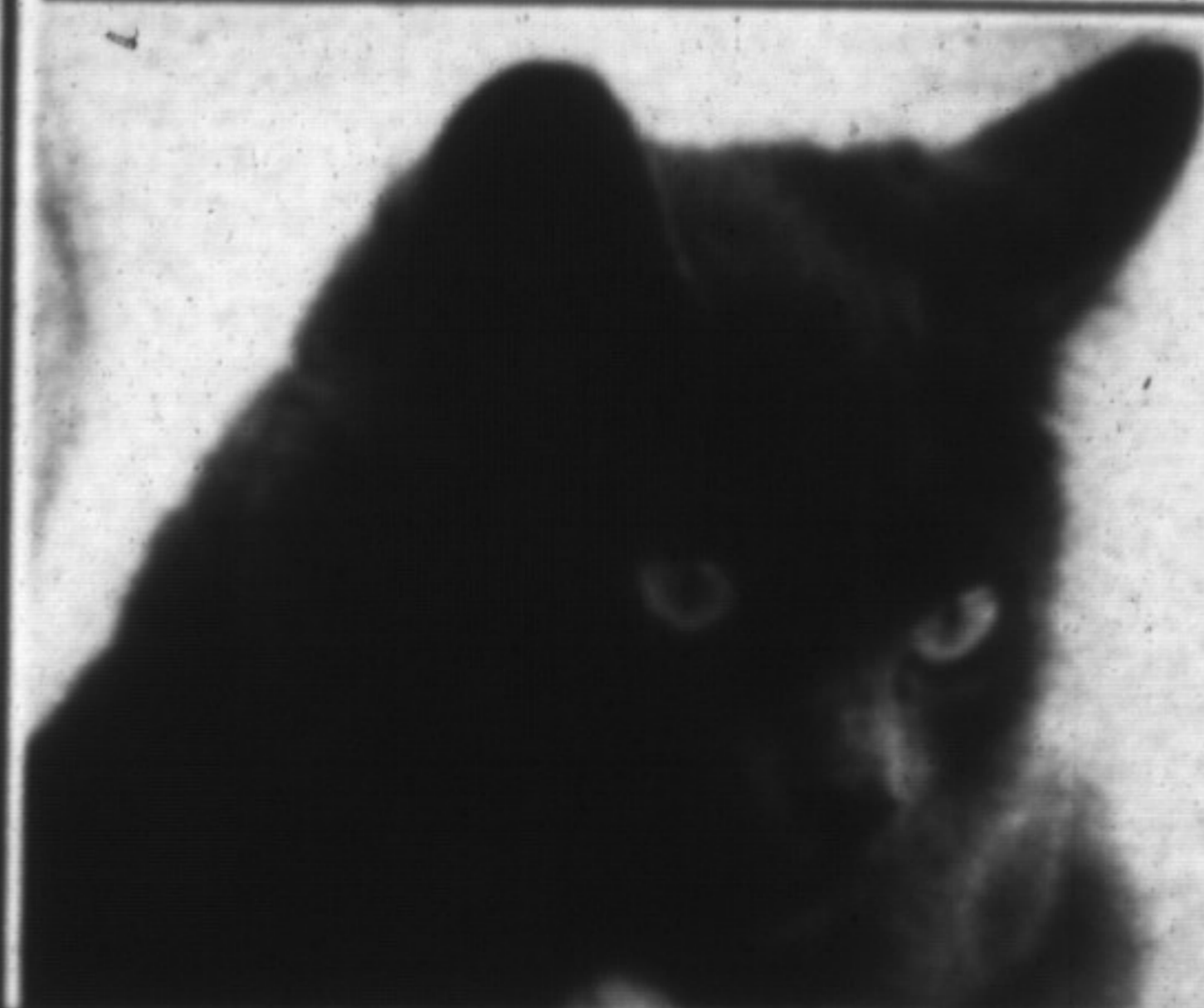
And it's practical. If you have an electrically heated home, in a location where natural gas is not available, you may be eligible for a \$500.00\* cash rebate from Ontario Hydro.

Call today to see if you qualify for the rebate and get the full details on this and other great ICG products.



**EnerMark** FINANCED BY THE **Scotiabank**  
 LOAN PLAN  
**Bailey Heating & Cooling**  
 A DIVISION OF BAILEY FUELS MILTON LTD.  
 Serving Milton & area for over 25 yrs.  
**FREE ESTIMATES**  
 R.R. No. 3 Milton **878-4821**  
MOBILE 565-9005

## Pet of the Week



There are so many cats waiting for adoption at the Oakville Humane Society that this feline doesn't even have a name. She is a young female with long hair and is waiting for a good home.

The animal shelter provides animal control in Milton and local residents who have lost a pet should call the Oakville Humane Society to report the pet missing.

There's a chance the pet was picked up by the animal control officer.

To find a lost pet or to adopt a new one, call the Oakville Humane Society at 845-1551 or visit the shelter at 445 Maple Ave., Oakville.

## 79's Patio & Office

### YOUR COMPLETE PATIO STORE



NOW ONLY  
**48900**  
 Reg. 574.94

### COMPLETE 11-PIECE SET

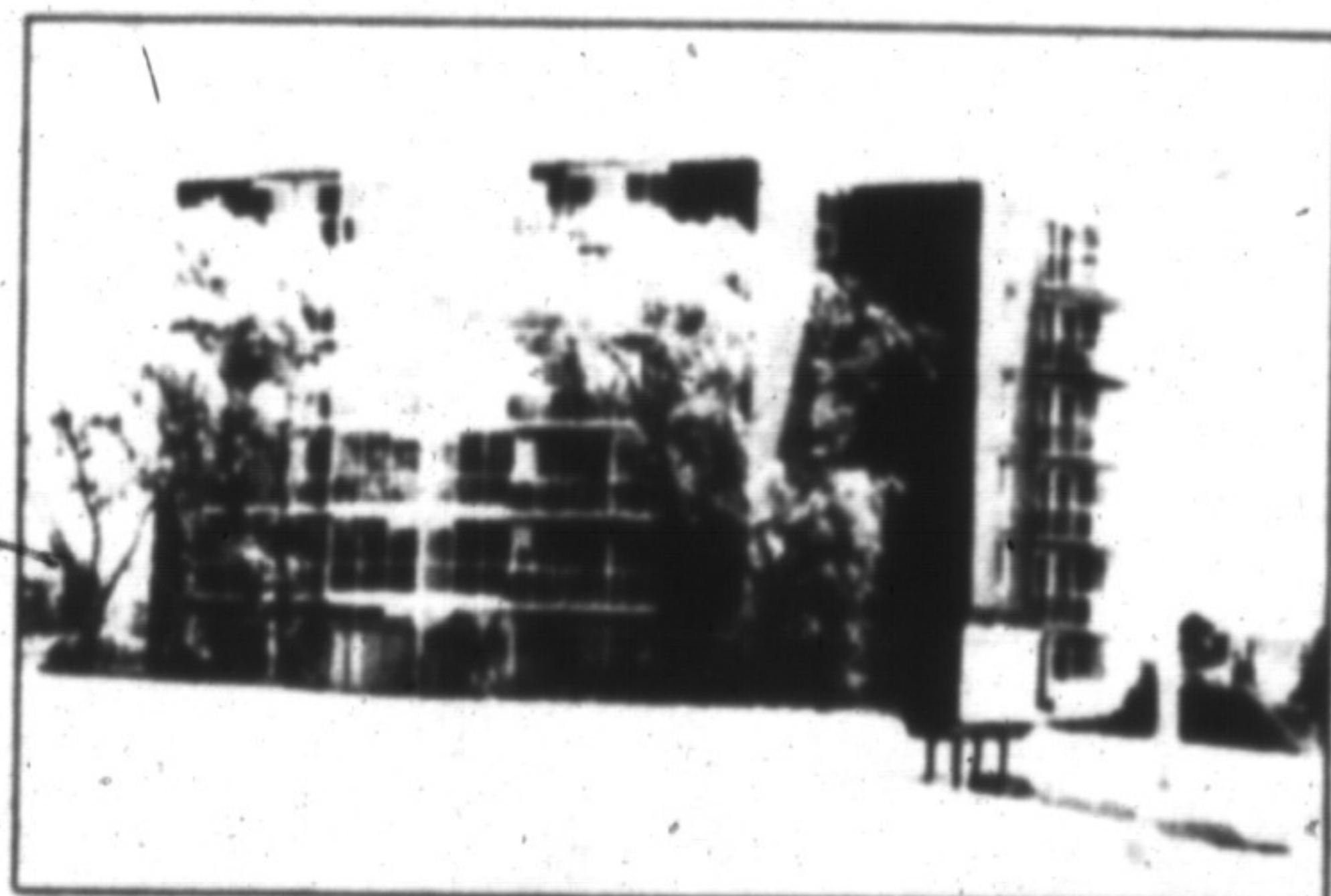
- 4-5 POSITION CHAIRS, 4 HIGH BACK
- TEXTILINE PADS
- 1 7½' TEXTILINE UMBRELLA
- 1 56"x37" WERZALITE TABLE
- 1 ALL WEATHER UMBRELLA BASE

OUR CAST ALUMINUM HAS ARRIVED

Sat., Mon. and Tues. 10 to 6, Wed. to Fri. 10 to 9, Sunday 12 to 4  
**490 SPEERS RD. OAKVILLE 338-0083**

# QUEENS HEIGHTS

*Oakville's Ultimate in Condominium Living*



Beat the G.S.T.

Venture out and see this unique 6-storey building with only 34 suites and a breathtaking view.

But that's not all...  
 Located within walking distance of Oakville Place and "GO" Station; easy access to QEW & 401.

Reduced!  
 Priced from \$189,000  
 Purchase before December 1990 and beat the G.S.T.  
 Come out and view a suite today!  
 You won't be disappointed.

Model suite open from 1-5 daily. Closed Friday.

1071 QUEEN'S AVENUE  
 TELEPHONE (416) 845-9823



North on Trafalgar, left on McCraney to Queen's Avenue