

## Dateline

Dateline is a free listing of coming events only, available to local community groups to assist in promoting their future events. Only charitable or non-profit community groups may use this service. We can only guarantee one issue of publicity closest to the date of the occurrence although more insertions are possible if

other demand is low.

Notices for Dateline should be written and handed in at the office of The Champion, 191 Main St. E., or mailed to us at Box 248, Milton, Ont. L9T 4N9. The final deadline is Friday at 5 p.m. for Wednesday's edition and Wednesday at 5 p.m. for Friday's edition. No items for Dateline will be accepted by telephone.

### Wednesday July 4-5

Vision TV series Baha'i Perspectives will air at 7:30 p.m. Wednesday and 3:30 p.m. Thursday with

Baha'u'llah — a glimpse of his life and teachings.

### Thursday July 5

The Women of Halton Action Movement (WHAM) will meet at 7:30 p.m. Anyone interested is welcome. For details and location, call Linda at 825-3999.

### Saturday July 7

A yard sale, sponsored by the

Coronation Group, will be held from 8 a.m. to 12 noon in front of Knox Presbyterian Church, 170 Main St.

Halton Centennial Manor will hold its annual rummage sale from 8:30 to 11:30 a.m. in the Pettit House basement. Everyone is welcome.

### Saturday July 7-8

Springridge Farm will host the eighth annual Strawberry Festival for the United Way from 10 a.m. to 5

p.m. Ten cents from every pound of strawberries sold will be donated to the United Way of Milton. The weekend-long event will feature strawberry shortcake, a craft show and sale, wagon rides along the Niagara Escarpment, live music and farm animals. Children will especially enjoy face painting, haystack jumping and strawberry eating contests.

### Sunday July 8

Ebenezer United Church on Guelph Line will present Music for a Summer Evening featuring organist Dr. Peter Hardwick, flute player Joanne Hiscocks, soprano Anita Maria Ruthig, and Daniel Warren on the trumpet. The 7:30 p.m. concert will include music by Handel, Rodrigo, Wolf, Mozart and other composers. Admission is \$8 for adults, \$4 for youths and \$20 for families. Enjoy refreshments and meet the artists at a post-concert reception. Proceeds will go to the Ebenezer building fund. For tickets call Audrey at (519)824-3770, Judy at 854-2698 or Susan at (519)856-9769.

### Monday July 9

The Milton Baha'i community will commemorate Martyrdom of the Bab — the day when the Bab (Gate) was executed for his teachings 127 years ago. A luncheon followed by a devotional program will be held at Halton Centennial Manor. Call 878-1362 for further details.

### Wednesday July 11

Mothers interested in information about breastfeeding are welcome to attend the next meeting of the Milton La Leche League. It will be held on First Line in Moffat at 8 p.m. For more information and directions, call 878-4803, 854-0197 or 877-4422.

### Thursday July 12

The Milton Baha'i community will hold Fireside — an informal opportunity to explore the basic principles of the Baha'i Faith. Call 878-1362 for time and location.

The Living with Cancer Group will meet at the Milton Branch of the Canadian Cancer Society, 751 Main St. E., from 7:30 to 9 p.m. Led by nurses, group discussions provide emotional support and practical guidance to patients, family and friends. Call 878-5228 or 878-1876 for more information.

### Tuesday July 17

The Alzheimer's Family Support Group will meet at Halton Centennial Manor's Pettit House from 7 to 8 p.m. Call Yvonne Stupak at 878-4141 for more information.

### Monday July 23

Halton Centennial Manor invites anyone interested to participate in a support group for people caring for aging relatives from 7 to 9 p.m. The group focuses on the needs of the caregiver. For more information, call Lauraine Andrews at 878-4141, ext. 167.

### Thursday July 26

The Milton Baha'i community will hold Fireside — an informal opportunity to explore the basic principles of the Baha'i Faith. Call 878-1362 for time and location.

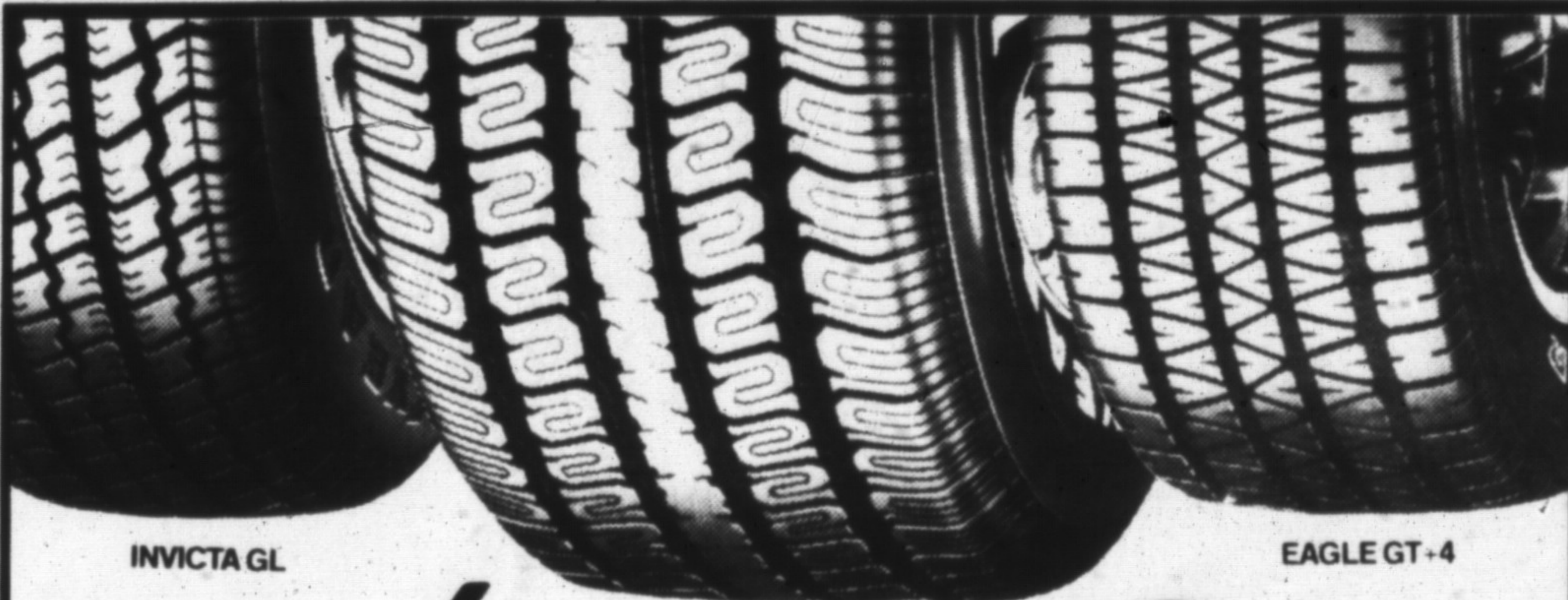
The Living with Cancer Group will meet at the Milton Branch of the Canadian Cancer Society, 751 Main St. E., from 7:30 to 9 p.m. Led by nurses, group discussions provide emotional support and practical guidance to patients, family and friends. Call 878-5228 or 878-1876 for more information.

### Friday July 27

Prayers for the World is an occasion offered by the Milton Baha'i community to gather with those of other faiths and share prayers for the betterment of mankind. The 8 p.m. event will be held at Hugh Foster Hall. Call 878-1362 for more information.

### Monday July 30

Vacation Bible School at St. David's Presbyterian Church in Campbellville will begin for children aged 3-12 years. The school will run until August 3 from 9:30 to 11:30 a.m. Enrollment is limited so register in advance. Call Joan Lambrick at 854-9957 for more information.



INVICTA GL

EAGLE ST

EAGLE GT+4

# 4 for 3

Sale ends July 21.

When you buy three tires you get the fourth at no extra charge. Call for prices on sizes not shown.

4 for 3		
OR 25% OFF PER TIRE OUR NEWEST PREMIUM ALL SEASON RADIAL INVICTA GL WHITEWALL		
Size	Sale Price Set of 4	Savings
P155/80R13	\$278.97	\$ 92.99
P165/80R13	329.97	109.99
P175/80R13	353.97	117.99
P185/75R14	374.97	124.99
P195/75R14	386.97	128.99
P205/75R14	413.97	137.99
P205/75R15	440.97	146.99
P215/75R15	458.97	152.99
P225/75R15	476.97	158.99
P235/75R15	503.97	167.99
P185/70R14	425.97	141.99
P205/70R14	449.97	149.99

4 for 3		
OR 25% OFF PER TIRE LOWEST PRICED HIGH PERFORMANCE RADIAL EAGLE ST RAISED WHITE LETTERS		
Size	Sale Price Set of 4	Savings
P175/70R13	\$311.97	\$103.99
P185/70R13	326.97	108.99
P195/70R14	371.97	123.99
P205/70R14	389.97	129.99
P215/60R14	392.97	130.99
P235/60R14	422.97	140.99
P225/70R15	437.97	145.99
P235/70R15	449.97	149.99
P215/65R15	413.97	137.99
P245/60R15	473.97	157.99
P255/60R15	494.97	164.99
P275/60R15	545.97	181.99

4 for 3		
OR 25% OFF PER TIRE PREMIUM ALL-SEASON HIGH PERFORMANCE RADIAL EAGLE GT+4 OUTLINE WHITE LETTERS		
Size	Sale Price Set of 4	Savings
P175/70R13	\$404.97	\$134.99
P185/70R13	449.97	149.99
P185/70R14	485.97	161.99
P195/70R14	497.97	165.99
P205/70R14	533.97	177.99
P215/60R14	521.97	173.99
P235/60R14	554.97	184.99
P225/70R15	584.97	194.99
P215/65R15	554.97	184.99
P205/60R15	530.97	176.99
P245/60R15	653.97	217.99

# GOODYEAR

NO CASH DOWN • NO INTEREST • 6 LOW MONTHLY PAYMENTS\*



\*On tires and mechanical services exceeding \$150.00 Payment is calculated on a 6 month deferred plan using VISA, MasterCard or American Express card. Visit your local Goodyear Retailer for details.

TAKE ME HOME

PLUS SHOP AND COMPARE EVERYDAY LOW PRICED ALL-SEASON RADIAL S4S

Size	Everyday Low Price
P155/80R13	\$44.99
P185/75R14	58.99
P195/75R14	59.99
P205/75R14	68.99
P205/75R15	68.99
P215/75R15	72.99
P225/75R15	81.99

SAVE \$29.<sup>00</sup> A/C EVACUATE AND RECHARGE \$59.<sup>95</sup>  
Includes Freon

Oil, Filter & Chassis Lubrication  
Includes Up to 5 Litres of Quaker State 10W30 Oil

SPECIAL \$21.95

45 Ontario St.N.,  
Milton



CERTIFIED  
AUTO SERVICE CENTRE

875-1502

OPEN 7:00 A.M. to 6:00 P.M. MON to FRI - SAT 7:00 A.M. to 5:00 P.M.