

RE/MAX



Gail Pullen
878-2365 Office
878-0110 Res.
826-1030 Tor. Line



FIRST TIME OFFER—

Private fenced garden for your comfort in a large plus with this 3 bdrm., 2 storey townhome. New broadoom thruout, new furnace/humidifier and central air, plus finished rec. room & garage. Asking \$155,900. Call Gail Pullen 878-0110



FIRE SALE \$259,900!!!

Vendor says SELL. July 1st possession. Large country home, completely renovated with double car garage & in-law suite. Call Gail Pullen 878-0110.



8 ACRES WITH VACANT FARM HOUSE & BARN

Just minutes to Milton sits this mini horse farm. Ideal property for future new home. Home is approx. 1600 sq. ft. with 2 baths. Asking \$189,900. Call Gail Pullen 878-0110.



IF YOU WANT THE BEST

They come and see this beautiful, 2 storey on Robertson Cres. 4 spacious bdrms with a Roman tub in the master bath with sep. shower stall. Walkout from greenhouse kit and fam. rm. to large deck with hot tub. Included are central air & vac, main floor den, with wet bar plus separate living room and dining rm. Call Gail Pullen 878-0110.



LINDSAY J. McLAREN

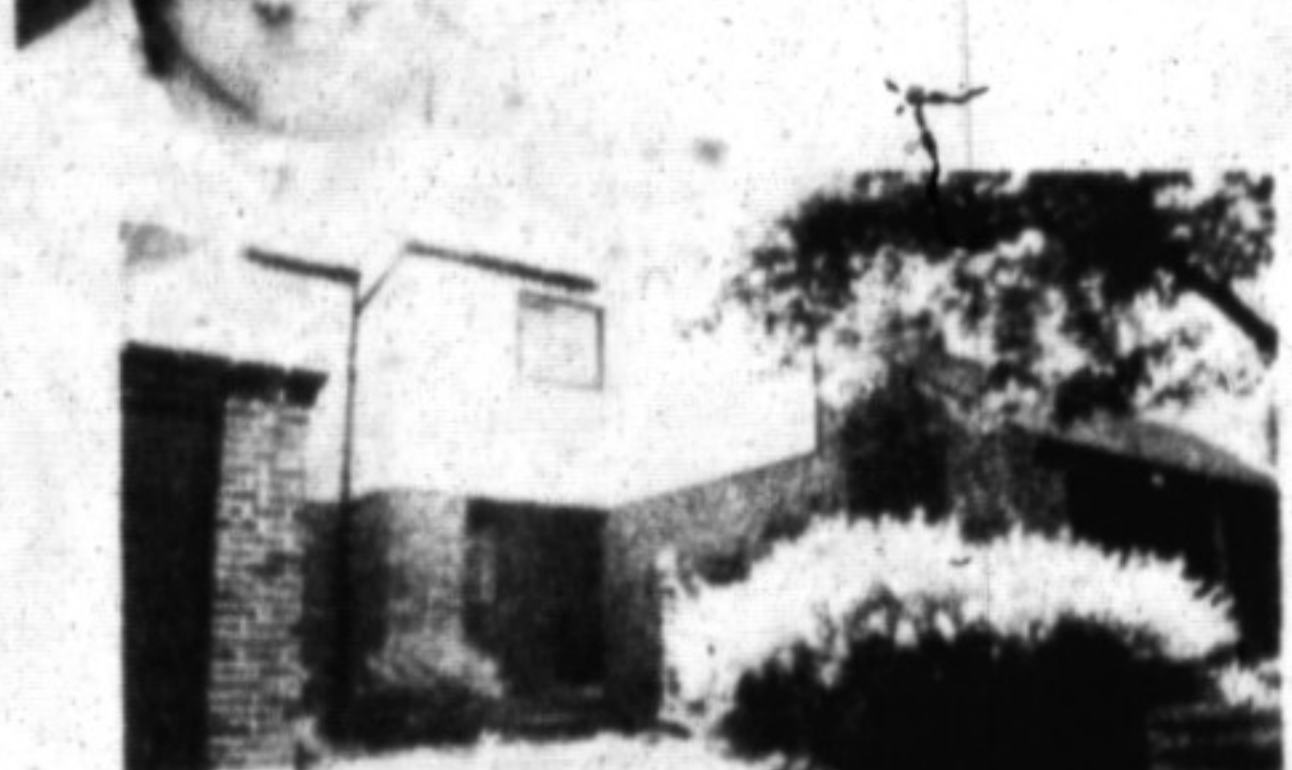
Sales Rep.

Office: 878-2365

Res: 854-2451

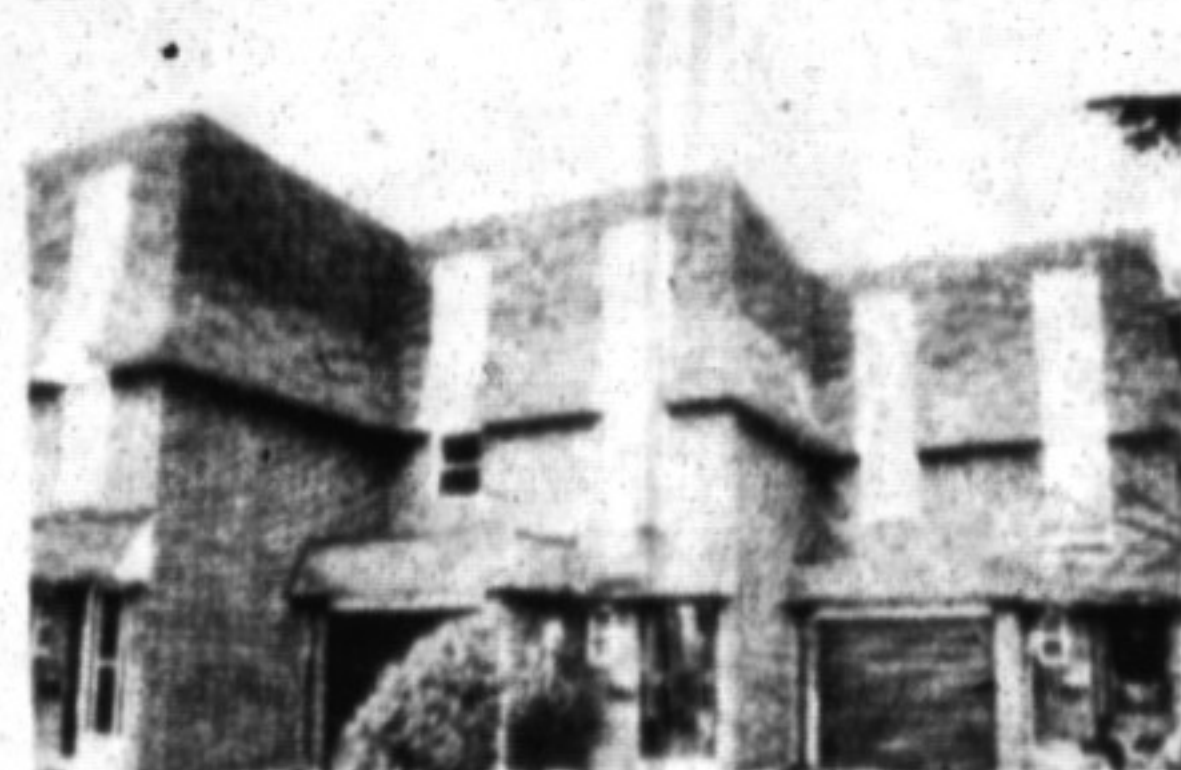
Pager: 878-2020

Tor. Line: 826-1030



"THE PRICE WILL ASTOUND YOU"

This 4 bedroom townhouse on Satok Cres. with full basement will be painted for your moving in. The condo fee entitles you to use the swimming pool, tennis court and rec. centre and at the low price of \$144,900 you can't afford to pass it up. For further details call today. **Lindsay J. McLaren List Price \$144,900**



"TOWNHOUSE LIVING"

This is a style chosen by many and if this is your style, then you should come and see the lovely 3 bedroom home with finished basement and backing onto detached home. Nice private backyard. Realistically priced at \$143,900. Call today for an appointment. **Lindsay J. McLaren List Price \$143,900**



LOVELY BRICK BUNGALOW

Situated on a gorgeous lot 100' x 212' on the Guelph Line, Campbellville. 3 bedrooms plus another on the lower level, finished basement with walkout, huge cedar deck with stairs down to lower level. Upgraded kitchen with walkout to deck and lots of cupboard space. Very private. This is a must to see. **Lindsay J. McLaren List Price \$232,500**



BEAUTIFUL RAVINE LOT

Overlooking stream and the Escarpment is where you will find the lovely 3 bedroom bungalow. Builder's own home so you know the extras are there. For instance, extra night lights, 2 bathrooms, wood stove, oversized picture window to appreciate the gorgeous view. Beautiful deck and very nicely landscaped. Vendor will take back \$125,000 mortgage at 11% for 2 years. Please call today to view. Was \$289,900. **Lindsay J. McLaren Reduced to \$259,900.**



"THE DESIGN IS UNIQUE"

Beautiful 1 acre setting on which is situated an incredible custom designed 2-storey home. Some of the features include cathedral ceilings in the living room, family room and front hallway. 4 large bedrooms, 3 bathrooms, walkouts from master bedroom, dining room & kitchen to beautiful deck. There is a built in dishwasher, stove & oven. There is so much more to tell you about the lovely home, so call now. **Lindsay J. McLaren List Price \$599,900**



"READY FOR THAT SUMMER FUN"

BBQ outside on the lovely interlocking patio, then jump into the 16' x 32' inground pool. This 4 bedroom side-split with finished basement is just waiting for you to move in. New kitchen with Barzotti Cupboards, Electronic Air Cleaner, Family Room, 2 baths, and much more. Call today for further details. **Lindsay J. McLaren List Price \$219,900**

RICHARD HIERMAN
Sales Representative
Office 878-2365
Toronto 826-1030
Residence 878-5806



SUMMER IN THE COUNTRY

Enjoy the summer evenings on the screened in porch and summer days roaming 20 gently rolling acres. 80 year old renovated brick Canadiana farmhouse has 3 bedrooms, 2-1/2 baths, large kitchen and main floor laundry. Call Richard now and enjoy your own Summer in the country. Asking \$499,000.00.

DOUG J. BUTSON
Sales Rep
Office 878-2365
Tor. Line 826-1030
Res: 878-2054

ESCARPMENT LOT - \$158,000, N.E.C. Approved
IN TOWN LOT - \$159,500, Big Perm Approved
WILSON DRIVE 1637 sq. ft. with 2 inner offices and oak trim. Perfect bank, insurance space.
STEELES AVE - 7700 sq. ft. or divide to suit with offices, warehouse, 4 shipping doors
DERRY ROAD 900 sq. ft. Busy plaza

SAUNA, POOL, SKYLIGHT

NOW \$205,500.

RAISED RANCH totally finished with extended kitchen, skylight in main bath, lower level has tudor fam. rm., Acorn fireplace, 4th bedroom, 2 pc. shower & sauna, A/V pool, deck, brick patio in fenced yard add to the exceptional value at \$210,000.

BETTY BRADING
Sales Representative
878-2365 Office
878-6716 Res.
RE/MAX Milltowne Realty Corp.
22 Ontario St., Milton



ENCHANTING WOODLAND ESTATE VILLAGE OF CAMPBELLVILLE
1.74 acres of heaven. 3 bdrms. & den, home is tucked into a hill which overlooks your own large pond which is stocked with Trout & Bass. The grounds are immaculate and is fully landscaped with trees, shrubs and flowers. Inground pool, outdoor sauna & 2 pc. bath. The home itself is extremely sunny & bright with lots & lots of windows, cathedral ceilings & 2 fireplaces, family room, games room, central air & much, much more. This property has to be seen to fully appreciate its beauty. Asking \$449,000.
Call Betty Brading 878-2365

NEW HOME UNDER CONSTRUCTION MINUTES NORTH OF ACTON
1.3 acres with mature trees, all electric, super energy efficient - R2000 specifications, 3 bdrms. & den. Central air - roughed-in, central vac, 3-1/2 baths. L.R. has cathedral ceiling - floor to ceiling fireplace, full basement with walkout, 3 bay window, 3 walkouts, B.C. cedar shingle roof & many many more features. Separate heated steel clad workshop (16 x 18) with hydro. This quality built home sits up high with a nice view of surrounding countryside. Asking \$389,900.
Call Betty Brading 878-2365

Let 25 Years of Real Estate Knowledge Work for You! Call Us
878-1084 Home

WAYNE WARNER Associate Broker 826-1030 Tor. Line
LINA WARNER Sales Rep 878-2365 Bus.

COUNTRY DREAM CEDAR SPRINGS ROAD
This lovely bi-level brick bungalow is nestled in 1.6 wooded acres with access to the Bruce Trail. Call Lina or Wayne for more information. \$389,500.

TIMBERLEA GEM ON QUIET COURT
This immaculate 3 bedroom home features lots of living area including: main level laundry, and family room with fireplace (+ gas insert) and walkout to patio. Spacious living and dining room, airy and bright eat-in kitchen. All appliances. \$199,000.

LOVELY LOT LOVELY LOCATION
This large 4 bedroom backsplit offers ground level entrance, great for nanny's quarters or in-law suite, huge family room with fireplace and eat-in kitchen. 11-3/4% Financing Available. \$219,900.

ABSOLUTELY SUPERB
Tastefully decorated, this large immaculate backsplit is located on one of Milton's largest lots. Complete with heated inground pool and total privacy - do not miss viewing with Lina or Wayne. \$309,900.

RE/MAX

SANDRA A. BAILEY
Sales Representative
Bus. 878-2365
24 hr. Pager 878-2020
Tor. Line 826-1030
RE/MAX Milltowne Realty Corp.
22 Ontario St. S., Milton

OPEN HOUSE SAT. 2:30-5:00

11-3/4% JANUARY 1994 MORTGAGE
Come see for yourself. Has central air/central vac. Includes washer & dryer. Lovely cared for! Double drive and garage. Still more extras.
Price \$237,800
Please call Sandra A. Bailey for personal viewing 878-2365

12.25% FEBRUARY 1994 MORTGAGE
Brand new listing. Redecorated & freshly painted. Includes new fridge and stove. Affordable, I'll say. Reach for this great mortgage.
Price \$189,800.
For a personal viewing please call Sandra A. Bailey