

REAL ESTATE



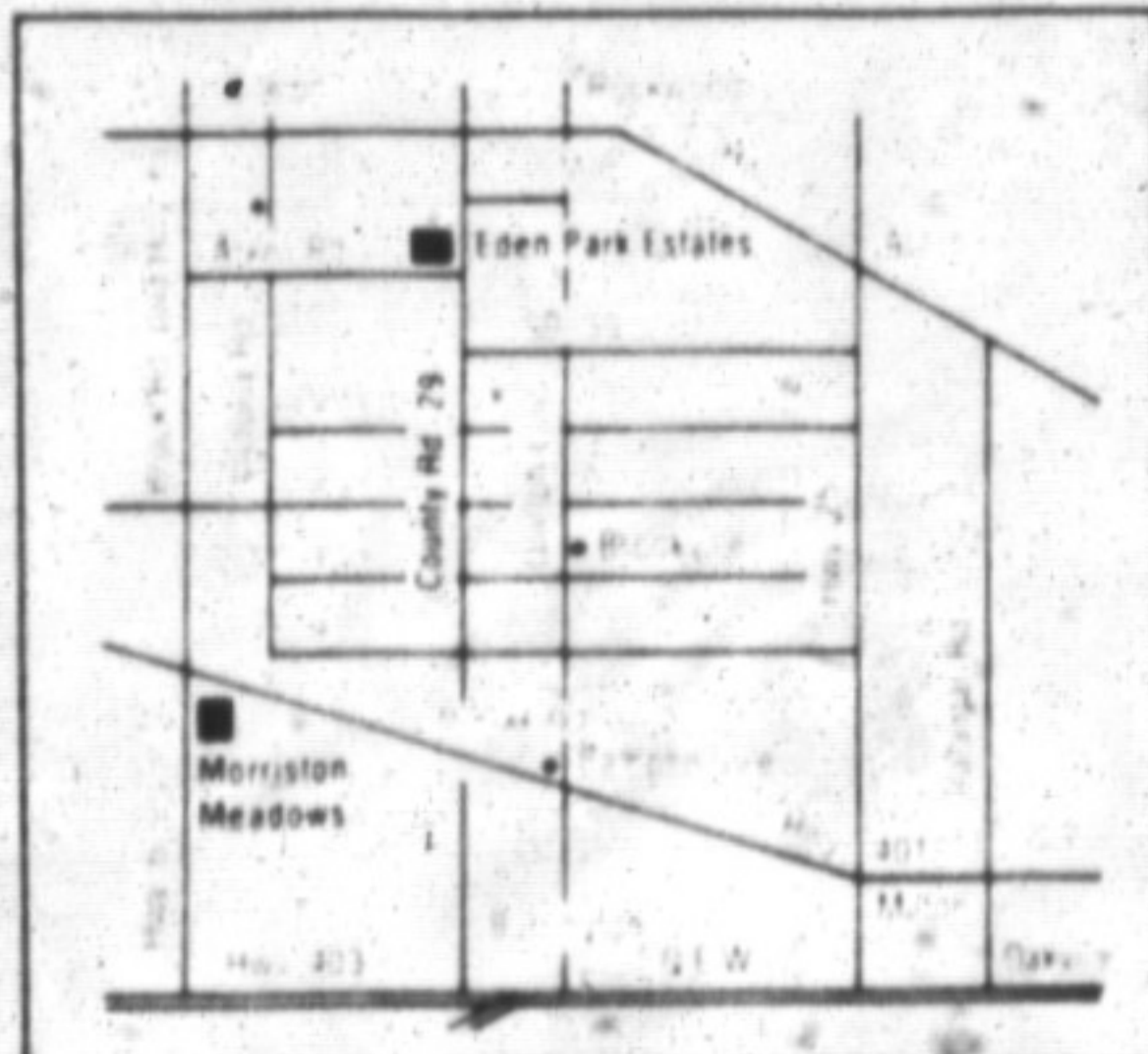
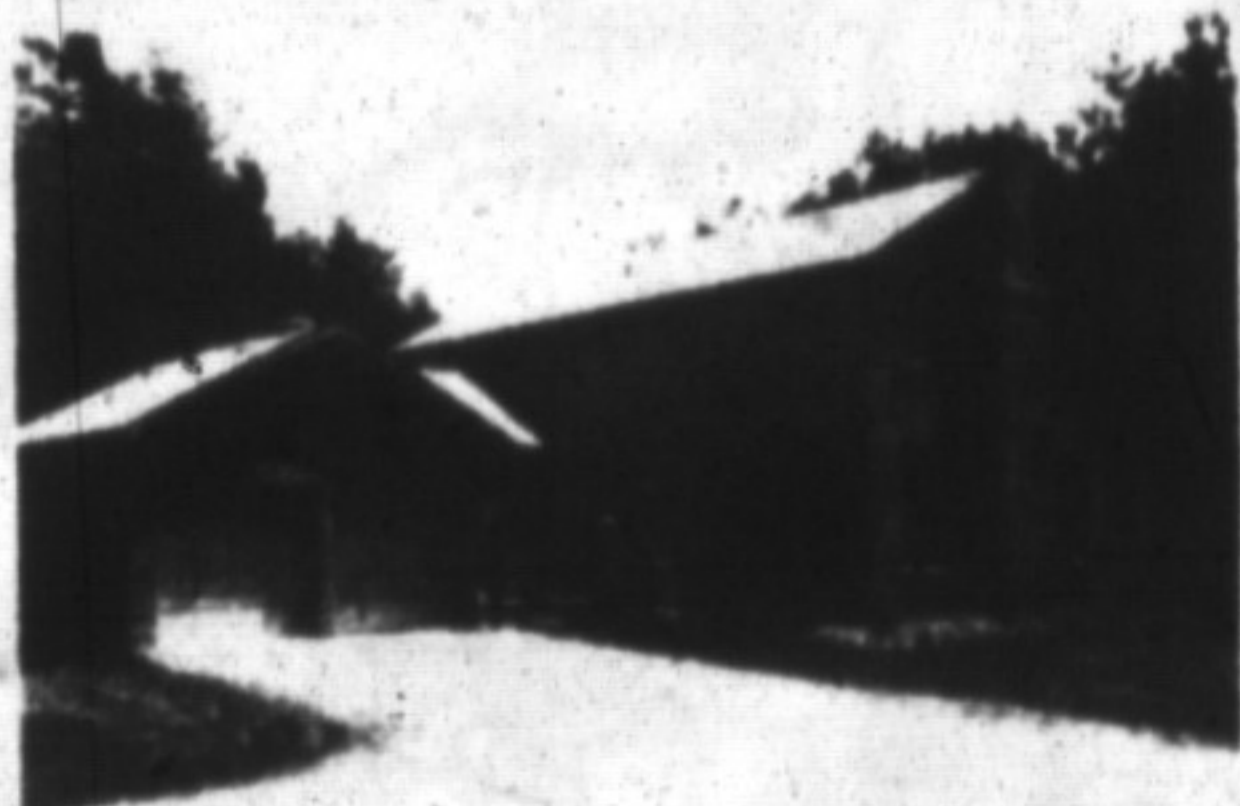
BISHOP ESTATE HOMES

Feel the warmth, and witness the elegance. The unique country setting of your executive class home situated on a 2 acre lot in EDEN PARK ESTATES pampers you with city type conveniences. Minutes to city activities, yet located in secluded, treed privacy for year round peacefulness.

1 1/4% - 2 yrs.
some conditions apply

Model Home Open
Sat. & Sun. 1 - 5 pm
Tues. & Weds. 5 - 8 pm

30 minutes west of Mississauga



For more information call:
Cheryl Chamula at
Bishop Estate Homes (519) 824-1850
Dave Wilson representing
Mason Real Estate Ltd. (519) 824-1811
John Draak representing Century 21
DiSapio Realty Ltd. (519) 767-2100

FURLONG COLLINS GUNDING

BARRISTERS & SOLICITORS

Your full service
Law firm

878-8123

Your full service
Law firm

BANKS	VARIABLE RATE	6 MONTHS	1 YEAR	2 YEARS	3 YEARS	4 YEARS	5 YEARS
Cdn Imperial	14%op	14%op	14%op 14%	14%	14%	14%	14%
Bank of Montreal	14%op	14%op	14%op 14.20	14%	14%	14%	14%
Laurentian Bank	n/a	14%op	15%op 14%	14%	14%	14%	14%
National Bank	n/a	15op 14%	15%op 14%	14%	14%	14%	13%
Bank of N. S.	14%op	14%op	14%op 13%	14%	14%	14%	14%
Royal Bank	14%op	14%op	14%op 14%	14%	14%	14%	14%
Toronto Dominion	14%	14%	14%op 14%	14%	14%	14%	14%
TRUST COMPANIES							
Cabot Tr	n/a	14%op	14%op 14%	14%	14%	14%	14%
Canada Trust	14%op	14op	14%	14%	14%	14%	14%
Central Guaranty Trust	14%	14%op	14%op 14%	14%	14%	14%	14%
Co-operative Trust	n/a	13.85op	14%op	14%op	15op	14%	14%
General Trust	n/a	14%	15%op 14%	14%	14%	14	13%
Guardian Trust	14%op	14op	14%	14%	14%	14	13%
Household Trust	n/a	14%	14%op	14%	14%	14	13%
Montreal Trust	n/a	14%op	14%op 14%	14%	14%	14	13%
National Trust	14%	14%	14%op 14%	14%	14%	14	13%
Premier Trust	n/a		14%op 14%	14%	14%	14	13%
Prenon Trust	n/a	13%op 13%	14%op 14	14%op 14	14	14	13%
Royal Trust	n/a	14%op 14%	14%op 14%	14%	14%	14	13%
Standard Trust	n/a	14%op 14%	14%op 14%	14%	14%	n/a	13%
Duca Credit Union	n/a	14%	14%op 14%	14%	14%	14%	14%
Jet Power Credit Union	n/a	14%op	14%op	R.O.R.	R.O.R.		R.O.R.

NOTES: ** Interest rate charged subject to adjustment during term of mortgage. Please consult institutions for term of years available.
R.O.R. - Rates on request
op - Open
--- Not quoting

RATES TAKEN:
JUNE 22, 1990

Fiscal agents specialize in trust and loan investments, and also supplies free consumer information on these investments. Phone: 844-7700.

Countrywide is a success because of our sales people!

FOR SALE

Countrywide

Town & Country Specialists

SOLD

Countrywide

Countrywide Campbellville Realty Inc.

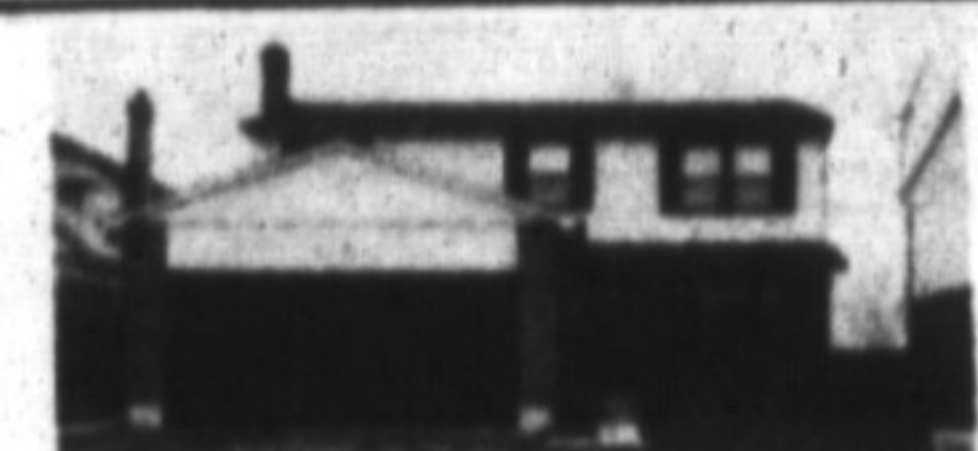
...The Obvious Choice



322 McHABB CRES.
11.75% TILL SEPT. '92
The price is right. Call Terry \$199,900.



4 ACRE ESTATE CLOSE TO CAMPBELLVILLE
Call Sylvia



MAKE US AN OFFER... \$229,000.
Located on Sunnyvale. Call Heather.



APPROX. 3000 SQ. FT. \$459,000.
Crawford Cr., Campbellville. Call Sylvia.



11% MORTGAGE TILL NOV. '91
650 CHILDS DR. Call Sylvia



1 ACRE WITH BEAUTIFUL LOG HOME.
\$429,000. Call Terry



5 B.R. MILTON \$499,900.
5 acres with 3 bdrm. split. Call Sylvia



4-1/2 ACRES NEAR ORTON \$239,000.

HEATHER'S CAMPBELLVILLE CHARMERS

854-2294 • 854-0543



A MUST TO SEE
1/2 ACRE RAVINE LOT \$349,000.



SUPERB FLOOR PLAN
3/4 ACRE TREES \$339,000.



A CAPE COD LOOKER
ON TWO ACRES \$324,900.



6 ACRE LOT WITH GREAT VIEW
INGROUND POOL \$299,000.



Act Now! You won't find better, quality
custom home on wooded lot at \$299,000.



CAMPBELLVILLE CUSTOM 3200 SQ. FT.
ALL BRICK ON 1.4 AC. \$459,000.



3 BDRM. FINISHED BASEMENT
\$197,900. CALL TERESA



NEW LISTING

THIS WON'T LAST!
Ridge Dr. walkout to ravine lot \$275,000.
Call Heather Now!

SYLVIA BURSEY HEATHER ASHBE
Broker/Owner Sales Representative
854-2294 854-2294
RES. 854-0651 RES. 854-0543

TERESA MILLS ISABELL HOSKINS
Sales Representative Sales Representative
854-2294 854-2294
RES. 878-5888 Res. 854-2131

TERRY WOOLSEY
Sales Representative
854-2294
(416) 689-7302

IN TOWN OF MILTON
.78 ACRE Estate lot. Secluded in the older part of town, room for
pool, tennis court, etc. Asking \$189,000. Call Sylvia 854-2294.

36 Main St. N.

CAMPBELLVILLE, ONT.

854-2294 854-2295