

RE/MAX

Miltowne Realty Corp.
 "Locally owned and operated"
 22 Ontario St. South 878-2365

RICHARD HIERMAN

Sales Representative
 Office 878-2365
 Toronto 826-1030
 Residence 878-5806



NEED A LONG CLOSING?

Then come see this 4 bedroom, 2 story home with new broadroom, beautiful family room and huge backyard with unique inground pool. Great family home on quiet court. Move in six months.

\$229,900.



VENDOR FINANCING

At better than bank rate with reasonable down payment, 3 bedrooms, 2-1/2 baths, main floor laundry room and mud room are just some of the features of this 80 year old renovated Canadiana farmhouse. 20 acres sport large barn and several paddocks.

REDUCED TO \$499,000.

Gary Thomas, Owner/President of Re/Max Miltowne Realty Corporation, is pleased to announce the appointment of Jeff Wright to his staff of dedicated professionals.



Jeff Wright

Jeff brings with him a wealth of experience from a wide variety of careers. He has always been very people-oriented which has been a great asset to him in his real estate career. He is ready to put his two years of experience selling real estate in the Milton area to work for you! Jeff invites all of his clients and friends to drop by, or give him a call at his new office, to discuss your real estate needs.

Office: 878-2365, Toronto: 826-1030, Residence: 878-5110

CLAYTON HACKENBROOK



OFFICE
 878-2365
 RES.
 875-0771

Associate Broker
 24 Hr. Pager
 878-2020
 Car Phone



EXCEPTIONAL BUY

This spacious backsplit is located on a 50' x 149' lot and features upgraded broadroom, central vac, central air, new furnace, (87) and 3 appliances. If you're looking for that special property then call Clayton to view. \$207,900.



A DREAM COME TRUE

3/4 acre ravine lot, view of escarpment, greenhouse kit. (addition), walkout basement with fireplace, 5 bedrooms, extensive renovations (89), oversized double garage, 16 x 32 pool, minutes to Milton. To view call Clayton \$385,000.



SOLD BY CLAYTON

REDUCED TO \$189,900

- 3 bdrm Dallas (1544 sq. ft.), fireplace
- central air and vac
- beautifully maintained and landscaped



1ST TIME BUYER OR RETIRED

This townhome would be just perfect. Features 3 bedrooms, finished basement and upgraded broadroom. Give me a call Clayton Hackenbrook \$152,900.

RE/MAX



Gary Thomas

Broker/Owner
 878-2365
 Res: 335-8888
 Tor: 826-1030



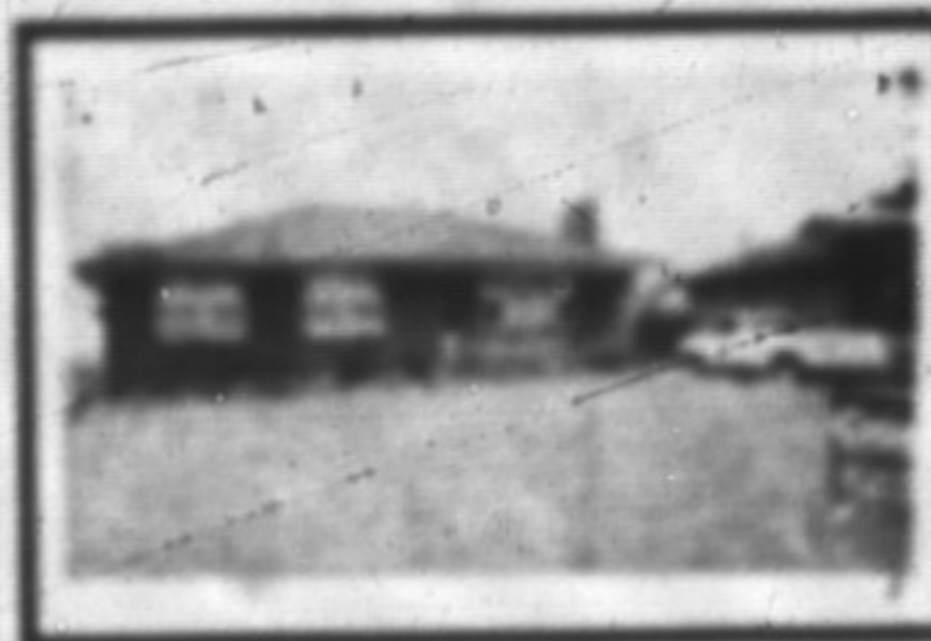
TIME TO MOVE UP!

You've worked hard for a long time and now you deserve a home with the best of everything. 4 bedrooms, separate living/dining areas, family room with wet bar, exceptional recreation room with a well-to-well "recreation centre," pool and park setting out the back. Deserve yourself and your family no more! Make the home yours by calling Gary Thomas. \$298,000.



"A BUILDER OF DREAMS"

Yes, there is a builder ready to build the dream home for you. The lot can be found in a most desirable area of estate homes in Kildare. The residence will include a luxurious four bedroom floor plan with family room, den, living/dining rooms and all the first class features and finishing you'd expect in a home of this calibre. If you'd like to see the plans call Gary Thomas.



"A TWO-WAY OPPORTUNITY"

Buy this residential brick bungalow with small barn situated on the edge of town and live comfortably with 3 bedrooms, 4 pc. bath, large kitchen and living room with fireplace. Or, buy the home and in addition collect revenue from the 2-story semi home which is situated on the same property. Are you a little confused? Don't worry. Just call Gary Thomas.



WAYNE WARNER
 Associate Broker

826-1030
 Tor. Line

878-1084
 Home

878-2365
 Bus.



LINA WARNER
 Sales Rep



LOVELY LOT LOVELY LOCATION

This large 4 bedroom backsplit offers ground level entrance, great for nanny's quarters or in-law suite, huge family room with fireplace and eat-in kitchen. \$219,900.



ABSOLUTELY SUPERB

Tastefully decorated the large immaculate backsplit is located on one of Milton's largest lots. Complete with heated inground pool and total privacy — do not miss viewing with Lina or Wayne. \$309,900.



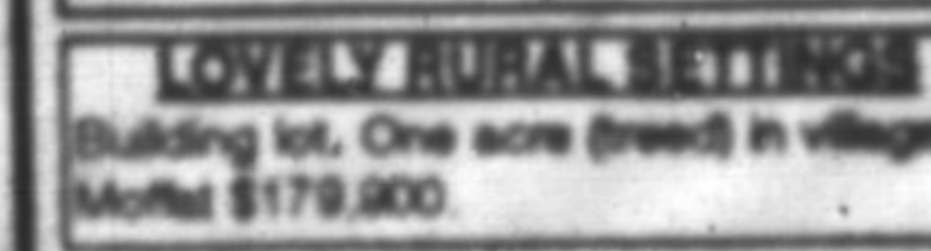
NORTH BURLINGTON COUNTRY WHAT A VIEW!

This lovely 2-level brick bungalow is nestled in 1.5 wooded acres with access to the Blvd. Call Lina or Wayne for more information. \$389,500.



TIMBERLEA GEM ON QUIET COURT

This immaculate 3 bedroom home features lots of living area including main level laundry and family room with fireplace (+ gas insert) and walkout to patio. Spacious living and dining room, airy and bright eat-in kitchen. All appliances. \$199,000.



LOVELY RURAL SETTING

One acre near Derry Road in Milton \$194,900. Surveys and financing available. Vendor says make an offer.

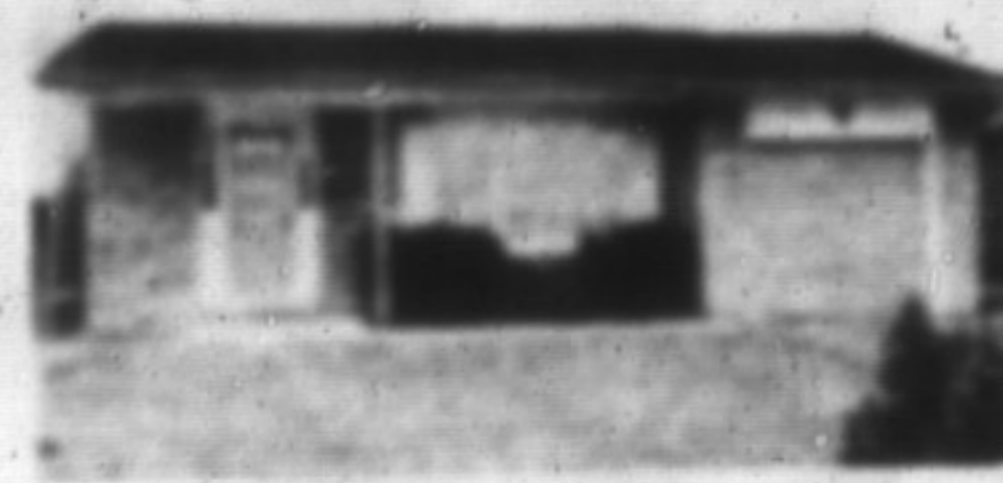
JEAN SNOWDEN

Sales Representative
 878-2365
 878-3155



11% FINANCING FOR 2 YEARS

Offered with this super brick home... central air, 2 bedrooms, finished lower level... lots of extras. A great buy... \$189,900.



IN A CLASS BY ITSELF

This absolutely immaculate home is situated on a large lot with mature trees and has a rec room with fireplace and bar, 2 bedrooms, large eat-in kitchen, 4 appliances, separate dining room, gleaming hardwood floors, plus central air & vacuum.

Call Jean Snowden

\$214,900

MOVE QUICKLY TO MOVE QUICKLY

Look at this value... 1/2 acre, brick home with double garage, huge rec room PLUS 11.3% mortgage @ 1993!

Call Jean Snowden

\$219,900.



RON FURIK

Sales Representative



Office: 878-2365
 Tor. Line 826-1030
 Res: 878-3337

NOW \$242,900.



GOT A GREEN THUMB?

Then you'll like this lot nestled on a lovely tree bordered yard. Offers fireplace in living room, spacious eat-in kitchen, main floor laundry/mud room, 4 bedrooms, 2 bathrooms with a spacious 2 car garage. This is a "Must See" opportunity. Best of all priced at only \$245,900. For your personal viewing

Call Ron Furik

878-2365

OPEN HOUSE
 SATURDAY
 1:00-4:00



REDUCED FOR ACTION.

This 2 story, 3 bedroom townhome features 2 bathrooms, upgraded carpeting, eat-in kitchen, dining/living room combination with walkout to patio. To find out how this can be yours. Call Ron Furik

NOW \$152,000.00

878-2365